



NEHTA Standard Message Implementation Guidelines for Health e-Procurement

Part 3: GS1 XML Despatch Messages

Version 1.5 - 15/10/2010

Final Release

National E-Health Transition Authority Ltd

Level 25

56 Pitt Street

Sydney, NSW, 2000

Australia.

www.nehta.gov.au

Disclaimer

NEHTA makes the information and other material ("Information") in this document available in good faith but without any representation or warranty as to its accuracy or completeness. NEHTA cannot accept any responsibility for the consequences of any use of the Information. As the Information is of a general nature only, it is up to any person using or relying on the Information to ensure that it is accurate, complete and suitable for the circumstances of its use.

Security

The content of this document is confidential. The information contained herein must only be used for the purpose for which it is supplied and must not be disclosed other than explicitly agreed in writing with NEHTA.

Copyright © 2007, NEHTA.

This document contains information which is protected by copyright. All Rights Reserved. No part of this work may be reproduced or used in any form or by any means without the permission of NEHTA. All copies of this document must include the copyright and other information contained on this page.

Version Control

Version	Nature of Change/Comments
1.5	<p>NEHTA DESADV message to incorporate Version 2.5 of the GS1 XML message 'CrossDockDespatchAdviceExtension'.</p> <p>NEHTA Standard Message Implementation Guidelines for Health e-Procurement updated to support Version 2.5 of the GS1 XML standards.</p> <p>Version 1 of the NEHTA Standard Message Implementation Guidelines based on Version 2.4 of the GS1 XML standards.</p> <p>Version 1.5 changes</p> <ul style="list-style-type: none"> • New attribute deliveryDateVariance (refer to Quantity Variances details) • Element deliveryOfTransportTerms changed from Element to Attribute <p>New element deliveryOrTransportTerms</p> <p>deliveryOfTransportTerms replaced by deliveryOrTransportTerms within document</p> <ul style="list-style-type: none"> • Element purchaseOrder within header has been changed from data type DocumentOrDocumentLineReferenceType to a simpler type, DocumentReferenceType. <p>New element purchaseOrderDocumentOrDocumentLineReference data type DocumentOrDocumentLineReferenceType added.</p> <p>purchaseOrder replaced by purchaseOrderDocumentOrDocumentLineReference within document (header only).</p> <ul style="list-style-type: none"> • Element purchaseConditions within header has been changed from data type DocumentOrDocumentLineReferenceType to a simpler type, DocumentReferenceType. <p>New element purchaseConditionsDocumentOrDocumentLineReference data type DocumentOrDocumentLineReferenceType added.</p> <p>purchaseConditions replaced by purchaseConditionsDocumentOrDocumentLineReference within document (header only).</p> <ul style="list-style-type: none"> • New optional element additionalDeliveryOrTransportTerms, description data type. Refer header element deliveryAndTransportInformation. • New optional header element shipToNameAndAddress, NameAndAddressType data type. • New value 'POOLED_PIGGBYPACK' added to code list for element modeOfTransport. Code added for backwood compatability purposes.

Table of contents

1	Introduction	9
1.1	Format - Data Sections.....	9
1.2	XML Document Structure and Layers.....	10
1.3	Global Trade Item Numbers - GTINs	11
1.4	Reference documents.....	11
2	Header Elements	12
2.1	Header Version.....	12
2.2	Sender 13	
2.3	Authority	14
2.4	Sender Name	14
2.5	Sender Email Address	15
2.6	Sender Fax Number	16
2.7	Sender Phone Number.....	16
2.8	Receiver	17
2.9	Authority	18
2.10	Receiver Name	18
2.11	Receiver Email Address	19
2.12	Receiver Fax Number	19
2.13	Receiver Phone Number	20
2.14	Message Document Standard	21
2.15	Message Document Type Version.....	22
2.16	Message Document Identification	22
2.17	Message Document Type	23
2.18	Message Document Multiple Types Included.....	24
2.19	Message Document Creation Date	25
2.20	Business Scope Type.....	25
2.21	Business Scope Identifier.....	26
2.22	"Any"	26
3	Message Layer Elements.....	28
3.1	Message	29
3.1.1	Message: <any>	29
3.1.2	Message: Identifier	29
3.1.3	Message: Owner	30
3.2	Transaction	31
3.2.1	Transaction Layer	31
3.2.2	Transaction: Identifier	31
3.2.3	Transaction: Owner	32
3.2.4	Transaction: Command.....	32
3.3	Document Command.....	33
3.3.1	Document Command element.....	33
3.3.2	Document Command: Type.....	34
3.3.3	Document Command: Identifier.....	34
3.3.4	Document Command: Owner	35
3.3.5	Document Command: Business Document	36
4	Business Document Layer Message Elements	37
4.1	Comments	37
4.1.1	Item Perspective vs Packaging Perspective.....	37
4.1.2	Expiry Dates, Lot Numbers etc.	37
4.1.3	Original Purchase Order Reference	38
4.1.4	Despatch Advice vs Advance Shipping Notice	38
4.1.5	Supporting Documents	38

4.2 Message Function	38
4.3 Last Update Date	40
4.4 Despatch Advice Creation Date	42
4.5 Despatch Date	43
4.6 Despatch Advice Reference Number	45
4.6.1 Delivery Note (Header Level)	46
4.6.2 Delivery Note Date (Header Level)	47
4.6.3 Delivery Note (Detail Level)	47
4.6.4 Delivery Note Date (Detail Level)	48
4.6.5 Delivery Note Line Number (Detail Level)	49
4.6.6 Consignment Note (Header Level)	50
4.6.7 Consignment Note Date (Header Level)	50
4.6.8 Consignment Note (Detail Level)	51
4.6.9 Consignment Note Date (Detail Level)	52
4.6.10 Consignment Note Line Number (Detail Level)	52
4.7 Despatch Advice Creator	53
4.8 Order Number	54
4.9 Order Date	55
4.10 Order Creator	56
4.11 Carrier	56
4.12 Delivery and Despatch Dates	57
4.12.1 Comments	57
4.12.2 Delivery Date	58
4.12.3 Actual Ship Date	58
4.12.4 Earliest Delivery Date	59
4.12.5 Latest Delivery Date	60
4.12.6 Earliest Delivery Date/Time	60
4.12.7 Latest Delivery Date/Time	61
4.13 Equipment Details	62
4.13.1 Truck Identifier	62
4.13.2 Transport Mode	63
4.13.3 Bill of Lading	64
4.13.4 Bill of Lading Date	65
4.13.5 Number of Packages	66
4.13.6 Package Types	67
4.14 Additional Information	68
4.15 Buyer	69
4.16 Supplier	69
4.17 Ship To Location	70
4.18 Packaging Level	71
4.18.1 Parent Packaging Level	71
4.19 Packaging Type	72
4.19.1 Child Package Type	73
4.20 Number of Packages	74
4.21 Package Measurements	75
4.21.1 Package Lineal Dimensions	75
4.21.2 Package: Other Measurements	76
4.21.3 Package: Measurement Type	77
4.21.4 Package: Unit of Measure	78
4.22 Quantity per Package	78
4.23 Package Identification	81
4.24 Line Number	81
4.25 Unique Product Identifier	84
4.26 Requested Item Identifier	87
4.27 Additional Product Information	89
4.28 Additional Product Information Type	89
4.29 Despatched Quantities	90

4.30	Ordered Quantity.....	91
4.31	Batch Number	92
4.32	Serial Numbers	93
4.33	Expiry Date.....	94
4.34	Best Before Dates.....	96
4.35	Order Line Number	97
4.35.1	Order Number	98
4.35.2	Order Date.....	98
4.36	Order Creator	99
4.37	Quantity Variances	100
4.38	Variance Reason.....	101
4.39	Delivery Date: Variances	102
5	Cross Dock Extension Elements	103
5.1	Comments	103
5.2	Shipment Identification Number	105
5.3	Cross Dock Location.....	105
5.3.1	Additional Party Identification Value	106
5.3.2	Additional Party Identification Type	106
5.4	Delivery Note	107
5.4.1	Delivery Note Date.....	108
5.4.2	Delivery Note Line Number	108
5.5	Consignment Note	109
5.5.1	Consignment Note Date.....	110
5.5.2	Consignment Note Line Number (Detail Level).....	110
5.6	Delivery and Despatch Dates.....	111
5.6.1	Comments	111
5.6.2	Delivery Date	111
5.6.3	Actual Ship Date.....	112
5.6.4	Earliest Delivery Date	112
5.6.5	Latest Delivery Date.....	113
5.6.6	Earliest Delivery Date/Time.....	113
5.6.7	Latest Delivery Date/Time.....	114
5.7	Packaging Level.....	115
5.7.1	Parent Packaging Level	115
5.8	Packaging Type	116
5.8.1	Child Package Type	117
5.9	Number of Packages	118
5.10	Package Measurements	119
5.10.1	Package Lineal Dimensions	120
5.10.2	Package: Other Measurements	121
5.10.3	Package: Measurement Type	122
5.10.4	Package: Unit of Measure	122
5.11	Quantity per Package.....	123
5.12	Package Identification	126
5.12.1	Additional Package Identification.....	126
5.13	Line Number	127
5.14	Unique Product Identifier.....	130
5.15	Requested Item Identifier.....	133
5.16	Additional Product Information	135
5.16.1	Additional Product Information Type.....	135
5.17	Ordered Quantity.....	136
5.18	Batch Number.....	137
5.19	Serial Numbers	138
5.20	Expiry Date.....	140
5.21	Best Before Dates.....	141
5.22	Order Line Number	142

- 5.22.1 Order Number143
- 5.22.2 Order Date144
- 5.22.3 Order Creator145
- 5.23 Quantity Variances.....145
- 5.23.1 Variance Reason146
- 5.23.2 Delivery Date: Variances.....147
- 6 References..... 148**

This page has been left blank intentionally.

1 Introduction

This document describes the elements of the GS1 XML Despatch Advice message that will be used by Health Jurisdictions and is intended for technical staff who have the responsibility of implementing these messages in their local systems. This information will assist technical staff to correctly populate the Despatch Advice message.

It is presumed that readers have an understanding of XML and an overview of the messages defined in Australian Standard AS5023 and GS1 XML.

The GS1 XML data elements in this document are limited to those which have an equivalent in, or are related to, the AS5023 standard for Health Supply Chain Messaging.

The GS1 XML path root is "despatchAdvice" and all XML paths will assume this starting point unless otherwise stated.

The cardinality listed is the cardinality of the actual element or attribute at the lowest level. Higher level elements need to be taken into consideration in determining whether or not the element is required in a particular circumstance.

Note also that the constraints are based on technical rules. Business rules may impose additional constraints.

1.1 Format - Data Sections

In the following sections the table cells are colour coded as follows

AS5023 related information is yellow
Basic GS1 XML information is green
Constraint information is blue
Co-requisite and optional elements are unshaded

The table headings are:

- AS5023 Reference

This provides a link to the specific data element in the AS5023.2-2003 document.

- Section: This will be one of "Header", "Detail", or "End of Message" as per the headings of the major tables for each data set in the AS5023 document.
- Group: The title in the first column of the AS5023 table.
- Element: The Element name as given in the third column of the AS5023 table.

- Description/Comment

This is a transcription of parts of the Description and Comments columns from the AS5023 table where they help clarify the intent of the data element.

- GS1 XML path

This is a pseudo XPath to the element that will assist in locating the element within the XML tree. Prefixes etc. are specifically excluded for the sake of simplification.

- Basic Type

One of "Attribute", "Element", or "Complex Type". If it is a Complex Type, then typically there will be a subsection following that identifies the Attributes and Elements of that Complex Type.

- Comments

Any other information that will assist in the population of the data element. (In some cases, the source of these comments come from NEHTA documents.)

- Schema Constraints

Any restrictions on the use of the data element. Sometimes these constraints are inherent within the schema. Sometimes they are external rules imposed by GS1 or NEHTA standards.

- **Mandatory** An item can be mandatory based on external GS1 or NEHTA rules in addition to the schema rules.
- **Data Type** Where possible, this is the simple XML data type. In some cases it is the Complex Type with further details of the component attributes and elements provided in other sections of the document.
- **Cardinality** The cardinality of the specific element. Note that the cardinality of parent elements also influence how the element is used.
- **Other constraints** are listed following the Cardinality restraint. For example, the allowable values of a list element.

- Co-requisites

Other elements and attributes which **MUST** be used if this element is used. The data type is listed after the name of the element/attribute.

- Optional Elements

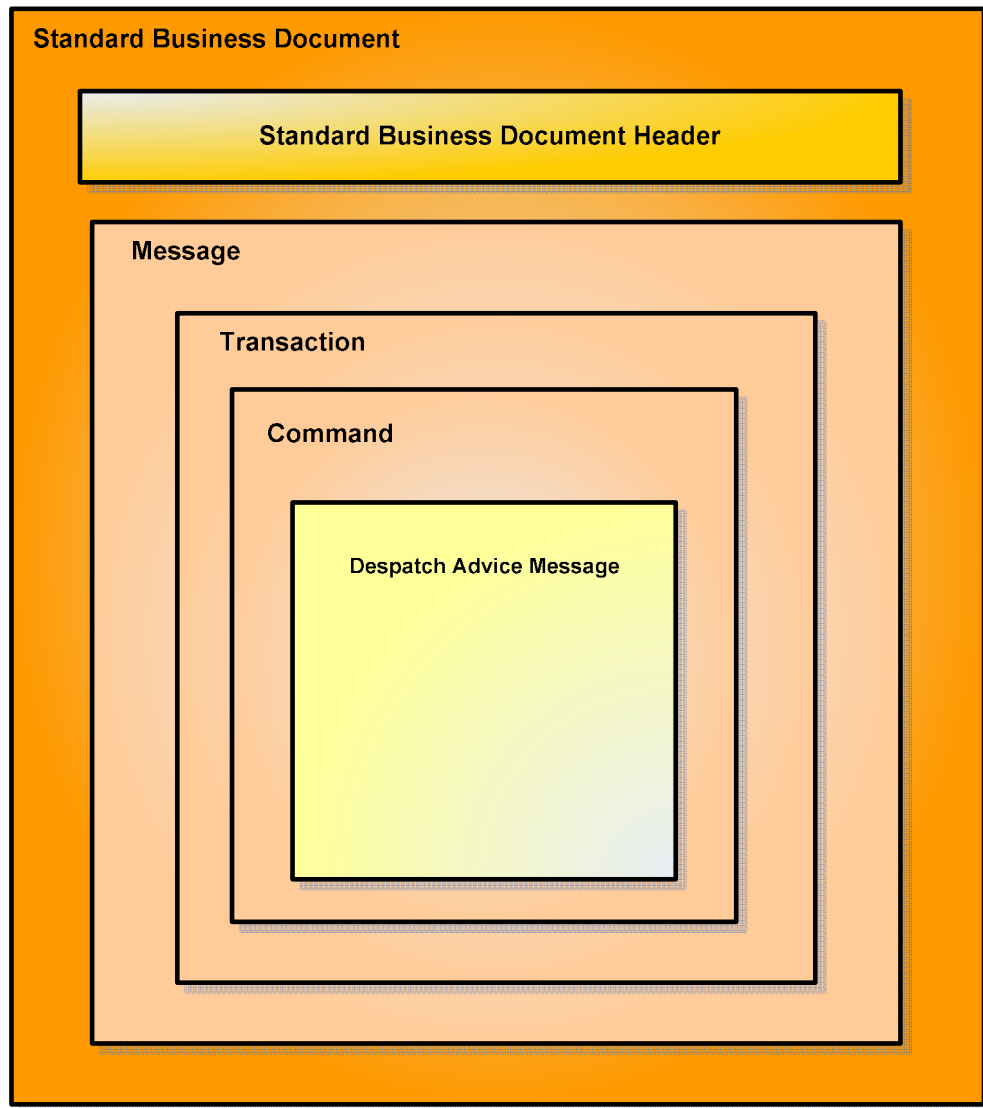
Other data elements and attributes which **MAY** be used if this element is used. The data type is listed after the name of the element/attribute.

When related elements are referred to, particularly in the Co-requisites and Optional Elements sections, a functional bias has been taken in deciding which elements to include or exclude. For example, the co-requisites for *documentStatus* included *contentVersion*, *orderHeaderIndicator*, etc. as they all define control information about the document. *multiShipmentOrderLineItem* was not included even though it is a mandatory element and is at the same XML level as it defined the contents of the document.

1.2 XML Document Structure and Layers

The Despatch Advice Message elements must be wrapped in the Message Layer element: *message*. In turn, the Message Layer elements must be wrapped in the UN/CEFACT Standard Business Document. Details of these elements are given Header Elements section. AS5023 information is not relevant to the Header or Message Layer elements.

The following diagram shows the relationship between the Header elements, Message Layer elements, and the Despatch Advice Message elements.



1.3 Global Trade Item Numbers - GTINs

Global Trade Item Numbers are used extensively to identify items. This field MUST contain a 14 digit number, so a 'filler 0' must be added to the front of the number if they are 8, 12, or 13 digit GTINs. For example, 9312345678901 becomes 09312345678901. This does not change the number at all, it is simply a non-significant digit added so this will pass schema validation.

1.4 Reference documents

The information in this document is based the documents identified in the Reference Section.

2 Header Elements

In this section, the GS1 XML path root is:

StandardBusinessDocument

(XPath: StandardBusinessDocument)

All XML paths will assume this starting point unless otherwise stated.

The Standard Business Document Header schema is specified by UN/CEFACT, and used by GS1 to envelope the business documents such as the Multi Shipment Order. GS1 has specified additional constraints to those in the UN/CEFACT schema when being used in the GS1 XML context. NEHTA has further specified additional constraints to both of these for use in Health Sector Supply Chain messaging.

2.1 Header Version

<i>AS5023 Reference</i>	<i>Section:</i>	<i>Group:</i>	<i>Element:</i>
<i>Description/Comments</i>			
<i>GS1 XML Path</i>	StandardBusinessDocumentHeader→HeaderVersion		
<i>Basic Type</i>	Element		
<i>Comments</i>	This is the version number of the SBDH standard.		
<i>Schema Constraints</i>	<i>Mandatory:</i> Yes – GS1 constraint.		
	<i>Data Type:</i> String		
	<i>Cardinality:</i> 1..1		
	Must be set to ‘1.0’		
<i>Co-requisites</i>	StandardBusinessDocumentHeader→Sender (<i>Partner</i>) StandardBusinessDocumentHeader→Receiver (<i>Partner</i>) StandardBusinessDocumentHeader→DocumentIdentification (<i>DocumentIdentification</i>) StandardBusinessDocumentHeader→BusinessScope (<i>BusinessScope</i>)		
<i>Optional Elements</i>			

2.2 Sender

AS5023 Reference	Section:	Group:	Element:
Description/Comments			
GS1 XML Path	StandardBusinessDocumentHeader→Sender→Identifier		
Basic Type	Element		
Comments	GS1 places additional constraints on the original UN/CEFACT schema definition.		
Schema Constraints	Mandatory: Yes		
	Data Type: Global Location Number		
	Cardinality: 1..*		
	Only <u>one</u> Sender element can be used even though the schema allows for multiple elements. The Sender Identifier <u>must</u> be the GLN of the sending organisation.		
Co-requisites	(Relative to StandardBusinessDocumentHeader→Sender) →Identifier→Authority (<i>Attribute - string</i>) →ContactInformation→Contact (<i>string</i>) →ContactInformation→EmailAddress (<i>string</i>) →ContactInformation→FaxNumber (<i>string</i>) →ContactInformation→TelephoneNumber (<i>string</i>)		
Optional Elements	(Relative to StandardBusinessDocumentHeader→Sender) →ContactInformation→ContactTypeIdentifier (<i>string</i>)		

2.3 Authority

AS5023 Reference	Section:	Group:	Element:
Description/Comments			
GS1 XML Path	StandardBusinessDocumentHeader→Sender→Identifier→Authority		
Basic Type	Attribute		
Comments	This attribute must be used according to GS1 standards.		
Schema Constraints	Mandatory: Yes		
	Data Type: string		
	Cardinality: 1..1		
	Must be set to “EAN.UCC”		
Co-requisites	None		
Optional Elements	None		

2.4 Sender Name

AS5023 Reference	Section:	Group:	Element:
Description/Comments			
GS1 XML Path	StandardBusinessDocumentHeader→Sender→ContactInformation→Contact		
Basic Type	Element		
Comments	This element is conditionally required if ContactInformation is used as per UN/CEFACT schema definition.		
Schema Constraints	Mandatory: No		
	Data Type: string		
	Cardinality: 1..1		
	Department and or title of technical contact in the sending organisation who is able to address issues concerning message delivery. Should not contain the name of an individual.		

<i>Co-requisites</i>	(Relative to StandardBusinessDocumentHeader→Sender→ContactInformation) →EmailAddress (<i>string</i>) →FaxNumber (<i>string</i>) →TelephoneNumber (<i>string</i>)
<i>Optional Elements</i>	→ContactTypeIdentifier (<i>string</i>)

2.5 Sender Email Address

<i>AS5023 Reference</i>	<i>Section:</i>	<i>Group:</i>	<i>Element:</i>
<i>Description/Comments</i>			
<i>GS1 XML Path</i>	StandardBusinessDocumentHeader→Sender→ContactInformation→ EmailAddress		
<i>Basic Type</i>	Element		
<i>Comments</i>	Optional in UN/CEFACT schema definition.		
<i>Schema Constraints</i>	<i>Mandatory:</i> No		
	<i>Data Type:</i> string		
	<i>Cardinality:</i> 0..1		
	Email address of Department in the sending organisation who is able to address issues concerning message delivery, should not contain Personally identifiable information (PII).		
<i>Co-requisites</i>	(Relative to StandardBusinessDocumentHeader→Sender→ContactInformation) →Contact (<i>string</i>) →FaxNumber (<i>string</i>) →TelephoneNumber (<i>string</i>)		
<i>Optional Elements</i>	→ContactTypeIdentifier (<i>string</i>)		

2.6 Sender Fax Number

AS5023 Reference	Section:	Group:	Element:
Description/Comments			
GS1 XML Path	StandardBusinessDocumentHeader→Sender→ContactInformation→ FaxNumber		
Basic Type	Element		
Comments	Optional in UN/CEFACT schema definition.		
Schema Constraints	Mandatory: No		
	Data Type: string		
	Cardinality: 0..1		
	Fax Number of the sending organisation who is able to address issues concerning message delivery.		
Co-requisites	(Relative to StandardBusinessDocumentHeader→Sender→ContactInformation) →Contact (string) →EmailAddress (string) →TelephoneNumber (string)		
Optional Elements	→ContactTypeIdentifier (string)		

2.7 Sender Phone Number

AS5023 Reference	Section:	Group:	Element:
Description/Comments			
GS1 XML Path	StandardBusinessDocumentHeader→Sender→ContactInformation→ TelephoneNumber		
Basic Type	Element		
Comments	Optional in UN/CEFACT schema definition.		
Schema Constraints	Mandatory: No		
	Data Type: string		
	Cardinality: 0..1		

	Phone Number of the sending organisation who is able to address issues concerning message delivery.
<i>Co-requisites</i>	(Relative to StandardBusinessDocumentHeader→Sender→ContactInformation) →Contact (<i>string</i>) →EmailAddress (<i>string</i>) →FaxNumber (<i>string</i>)
<i>Optional Elements</i>	→ContactTypeIdentifier (<i>string</i>)

2.8 Receiver

<i>AS5023 Reference</i>	<i>Section:</i>	<i>Group:</i>	<i>Element:</i>
<i>Description/Comments</i>			
<i>GS1 XML Path</i>	StandardBusinessDocumentHeader→Receiver→Identifier		
<i>Basic Type</i>	Element		
<i>Comments</i>	GS1 places additional constraints on the original UN/CEFACT schema definition.		
<i>Schema Constraints</i>	<i>Mandatory:</i> Yes		
	<i>Data Type:</i> Global Location Number		
	<i>Cardinality:</i> 1..*		
	Only <u>one</u> Receiver element can be used even though the schema allows for multiple elements. The Receiver Identifier <u>must</u> be the GLN of the sending organisation.		
<i>Co-requisites</i>	(Relative to StandardBusinessDocumentHeader→Receiver) →Identifier→Authority (<i>Attribute - string</i>) →ContactInformation→Contact (<i>string</i>) →ContactInformation→EmailAddress (<i>string</i>) →ContactInformation→FaxNumber (<i>string</i>) →ContactInformation→TelephoneNumber (<i>string</i>)		
<i>Optional Elements</i>	(Relative to StandardBusinessDocumentHeader→Receiver) →ContactInformation→ContactTypeIdentifier (<i>string</i>)		

2.9 Authority

<i>AS5023 Reference</i>	<i>Section:</i>	<i>Group:</i>	<i>Element:</i>
<i>Description/Comments</i>			
<i>GS1 XML Path</i>	StandardBusinessDocumentHeader→Receiver→Identifier→Authority		
<i>Basic Type</i>	Attribute		
<i>Comments</i>	This attribute must be used according to GS1 standards.		
<i>Schema Constraints</i>	<i>Mandatory:</i> Yes		
	<i>Data Type:</i> string		
	<i>Cardinality:</i> 1..1		
	Must be set to “EAN.UCC”		
<i>Co-requisites</i>	None		
<i>Optional Elements</i>	None		

2.10 Receiver Name

<i>AS5023 Reference</i>	<i>Section:</i>	<i>Group:</i>	<i>Element:</i>
<i>Description/Comments</i>			
<i>GS1 XML Path</i>	StandardBusinessDocumentHeader→Receiver→ContactInformation→Contact		
<i>Basic Type</i>	Element		
<i>Comments</i>	This element is mandatory if ContactInformation is used as per UN/CEFACT schema definition.		
<i>Schema Constraints</i>	<i>Mandatory:</i> No		
	<i>Data Type:</i> string		
	<i>Cardinality:</i> 1..1		
	Department and or title of technical contact in the receiving organisation who is able to address issues concerning message delivery. Should not contain the name of an individual.		

<i>Co-requisites</i>	(Relative to StandardBusinessDocumentHeader→Receiver→ContactInformation) →EmailAddress (<i>string</i>) →FaxNumber (<i>string</i>) →TelephoneNumber (<i>string</i>)
<i>Optional Elements</i>	→ContactTypeIdentifier (<i>string</i>)

2.11 Receiver Email Address

<i>AS5023 Reference</i>	<i>Section:</i>	<i>Group:</i>	<i>Element:</i>
<i>Description/Comments</i>			
<i>GS1 XML Path</i>	StandardBusinessDocumentHeader→Receiver→ContactInformation→ EmailAddress		
<i>Basic Type</i>	Element		
<i>Comments</i>	Optional in UN/CEFACT schema definition.		
<i>Schema Constraints</i>	<i>Mandatory:</i> No		
	<i>Data Type:</i> string		
	<i>Cardinality:</i> 0..1		
	Email address of Department in the receiving organisation who is able to address issues concerning message delivery, should not contain Personally identifiable information (PII).		
<i>Co-requisites</i>	(Relative to StandardBusinessDocumentHeader→Receiver→ContactInformation) →Contact (<i>string</i>) →FaxNumber (<i>string</i>) →TelephoneNumber (<i>string</i>)		
<i>Optional Elements</i>	→ContactTypeIdentifier (<i>string</i>)		

2.12 Receiver Fax Number

<i>AS5023 Reference</i>	<i>Section:</i>	<i>Group:</i>	<i>Element:</i>
<i>Description/Comments</i>			

<i>GS1 XML Path</i>	StandardBusinessDocumentHeader→Receiver→ContactInformation→ FaxNumber
<i>Basic Type</i>	Element
<i>Comments</i>	Optional in UN/CEFACT schema definition.
<i>Schema Constraints</i>	<i>Mandatory:</i> No
	<i>Data Type:</i> string
	<i>Cardinality:</i> 0..1
	Fax Number of the receiving organisation who is able to address issues concerning message delivery.
<i>Co-requisites</i>	(Relative to StandardBusinessDocumentHeader→Receiver→ContactInformation) →Contact (<i>string</i>) →EmailAddress (<i>string</i>) →TelephoneNumber (<i>string</i>)
<i>Optional Elements</i>	→ContactTypeIdentifier (<i>string</i>)

2.13 Receiver Phone Number

<i>AS5023 Reference</i>	<i>Section:</i>	<i>Group:</i>	<i>Element:</i>
<i>Description/Comments</i>			
<i>GS1 XML Path</i>	StandardBusinessDocumentHeader→Receiver→ContactInformation→ TelephoneNumber		
<i>Basic Type</i>	Element		
<i>Comments</i>	Optional in UN/CEFACT schema definition.		
<i>Schema Constraints</i>	<i>Mandatory:</i> No		
	<i>Data Type:</i> string		
	<i>Cardinality:</i> 0..1		
	Phone number of technical contact in the receiving organisation who is able to address issues concerning message delivery.		

<i>Co-requisites</i>	(Relative to StandardBusinessDocumentHeader→Receiver→ContactInformation) →Contact (<i>string</i>) →EmailAddress (<i>string</i>) →FaxNumber (<i>string</i>)
<i>Optional Elements</i>	→ContactTypeIdentifier (<i>string</i>)

2.14 Message Document Standard

<i>AS5023 Reference</i>	<i>Section:</i>	<i>Group:</i>	<i>Element:</i>
<i>Description/Comments</i>			
<i>GS1 XML Path</i>	StandardBusinessDocumentHeader→DocumentIdentification→Standard		
<i>Basic Type</i>	Element		
<i>Comments</i>	GS1 places additional constraints on the original UN/CEFACT schema definition.		
<i>Schema Constraints</i>	Mandatory: Yes		
	Data Type: string		
	Cardinality: 1..1		
	Must be set to “EAN.UCC”		
<i>Co-requisites</i>	(Relative to StandardBusinessDocumentHeader→DocumentIdentification) →TypeVersion (<i>string</i>) →InstanceIdentifier (<i>string</i>) →Type (<i>string</i>) →MultipleType (<i>boolean</i>) →CreationDateAndTime (<i>dateTime</i>)		
<i>Optional Elements</i>	None		

2.15 Message Document Type Version

<i>AS5023 Reference</i>	<i>Section:</i>	<i>Group:</i>	<i>Element:</i>
<i>Description/Comments</i>			
<i>GS1 XML Path</i>	StandardBusinessDocumentHeader→DocumentIdentification→TypeVersion		
<i>Basic Type</i>	Element		
<i>Comments</i>	GS1 places additional constraints on the original UN/CEFACT schema definition.		
<i>Schema Constraints</i>	<i>Mandatory:</i> Yes		
	<i>Data Type:</i> string		
	<i>Cardinality:</i> 1..1		
	Must be set to the version number of the despatchAdvice schema e.g. "2.5"		
<i>Co-requisites</i>	(Relative to StandardBusinessDocumentHeader→DocumentIdentification) →Standard (<i>string</i>) →InstanceIdentifier (<i>string</i>) →Type (<i>string</i>) →MultipleType (<i>boolean</i>) →CreationDateAndTime (<i>dateTime</i>)		
<i>Optional Elements</i>	None		

2.16 Message Document Identification

<i>AS5023 Reference</i>	<i>Section:</i>	<i>Group:</i>	<i>Element:</i>
<i>Description/Comments</i>			
<i>GS1 XML Path</i>	StandardBusinessDocumentHeader→DocumentIdentification→InstanceIdentifier		
<i>Basic Type</i>	Element		
<i>Comments</i>	GS1 places additional constraints on the original UN/CEFACT schema definition.		
<i>Schema Constraints</i>	<i>Mandatory:</i> Yes		
	<i>Data Type:</i> String		

	Cardinality: 1..1
	This element must uniquely identify the instance of the Standard Business Document. That is, no two transmissions will have the same identifier regardless of the type of business document contained, or if a specific business document is transmitted multiple times. This element is used to identify the whole message being transmitted, not the business document contained within the message.
Co-requisites	(Relative to StandardBusinessDocumentHeader→DocumentIdentification) →Standard (string) →TypeVersion (string) →Type (string) →MultipleType (boolean) →CreationDateAndTime (dateTime)
Optional Elements	None

2.17 Message Document Type

AS5023 Reference	Section:	Group:	Element:
Description/Comments			
GS1 XML Path	StandardBusinessDocumentHeader→DocumentIdentification→Type		
Basic Type	Element		
Comments	GS1 places additional constraints on the original UN/CEFACT schema definition.		
Schema Constraints	Mandatory: Yes		
	Data Type: string		
	Cardinality: 1..1		
	Must be set to “despatchAdvice”. (The name of the root element in the payload document.)		

<i>Co-requisites</i>	(Relative to StandardBusinessDocumentHeader→DocumentIdentification) →Standard (<i>string</i>) →TypeVersion (<i>string</i>) →InstanceIdentifier (<i>string</i>) →MultipleType (<i>boolean</i>) →CreationDateAndTime (<i>dateTime</i>)
<i>Optional Elements</i>	None

2.18 Message Document Multiple Types Included

<i>AS5023 Reference</i>	<i>Section:</i>	<i>Group:</i>	<i>Element:</i>
<i>Description/Comments</i>			
<i>GS1 XML Path</i>	StandardBusinessDocumentHeader→DocumentIdentification→MultipleType		
<i>Basic Type</i>	Element		
<i>Comments</i>	GS1 places additional constraints on the original UN/CEFACT schema definition.		
<i>Schema Constraints</i>	<i>Mandatory:</i> Yes		
	<i>Data Type:</i> boolean		
	<i>Cardinality:</i> 1..1		
	Must be set to “false”. (NEHTA standard – only one business document should be sent per transmission.)		
<i>Co-requisites</i>	(Relative to StandardBusinessDocumentHeader→DocumentIdentification) →Standard (<i>string</i>) →TypeVersion (<i>string</i>) →InstanceIdentifier (<i>string</i>) →Type (<i>string</i>) →CreationDateAndTime (<i>dateTime</i>)		
<i>Optional Elements</i>	None		

2.19 Message Document Creation Date

<i>AS5023 Reference</i>	<i>Section:</i>	<i>Group:</i>	<i>Element:</i>
<i>Description/Comments</i>			
<i>GS1 XML Path</i>	StandardBusinessDocumentHeader→DocumentIdentification→CreationDateAndTime		
<i>Basic Type</i>	Element		
<i>Comments</i>	GS1 places additional constraints on the original UN/CEFACT schema definition.		
<i>Schema Constraints</i>	<i>Mandatory:</i> Yes		
	<i>Data Type:</i> dateTime		
	<i>Cardinality:</i> 1..1		
	Must be set to the date and time that the source Despatch Advice was approved/verified in the original system.		
<i>Co-requisites</i>	(Relative to StandardBusinessDocumentHeader→DocumentIdentification) →Standard (<i>string</i>) →TypeVersion (<i>string</i>) →InstanceIdentifier (<i>string</i>) →Type (<i>string</i>) →MultipleType (<i>boolean</i>)		
<i>Optional Elements</i>	None		

2.20 Business Scope Type

<i>AS5023 Reference</i>	<i>Section:</i>	<i>Group:</i>	<i>Element:</i>
<i>Description/Comments</i>			
<i>GS1 XML Path</i>	StandardBusinessDocumentHeader→BusinessScope→Scope→Type		
<i>Basic Type</i>	Element		
<i>Comments</i>	NEHTA standards mandate the use of this element although it is optional in the UN/CEFACT schema definition.		
<i>Schema Constraints</i>	<i>Mandatory:</i> Yes		
	<i>Data Type:</i> String		

	Cardinality: 1..1
	Must be set to “NEHTA:E-Procurement”
Co-requisites	StandardBusinessDocumentHeader→BusinessScope→Scope→InstanceIdentifier
Optional Elements	StandardBusinessDocumentHeader→BusinessScope→Scope→Identifier

2.21 Business Scope Identifier

AS5023 Reference	Section:	Group:	Element:
Description/Comments			
GS1 XML Path	StandardBusinessDocumentHeader→BusinessScope→Scope→InstanceIdentifier		
Basic Type	Element		
Comments	NEHTA standards mandate the use of this element although it is optional in the UN/CEFACT schema definition.		
Schema Constraints	Mandatory: Yes		
	Data Type: String		
	Cardinality: 1..1		
	Must be set to "1.5" which is the current version of this guideline.		
Co-requisites	StandardBusinessDocumentHeader→BusinessScope→Scope→Type		
Optional Elements	StandardBusinessDocumentHeader→BusinessScope→Scope→Identifier		

2.22 “Any”

AS5023 Reference	Section:	Group:	Element:
Description/Comments			
GS1 XML Path	<any>		
Basic Type			

<i>Comments</i>	This is the place holder for the GS1 XML constructs. It must be replaced by the “message” element from the Message Layer group of schema.
<i>Schema Constraints</i>	<i>Mandatory:</i>
	<i>Data Type:</i>
	<i>Cardinality:</i>
	Must be replaced with “ <i>message</i> ”. See the Message Layer section.
<i>Co-requisites</i>	StandardBusinessDocumentHeader
<i>Optional Elements</i>	None

3 Message Layer Elements

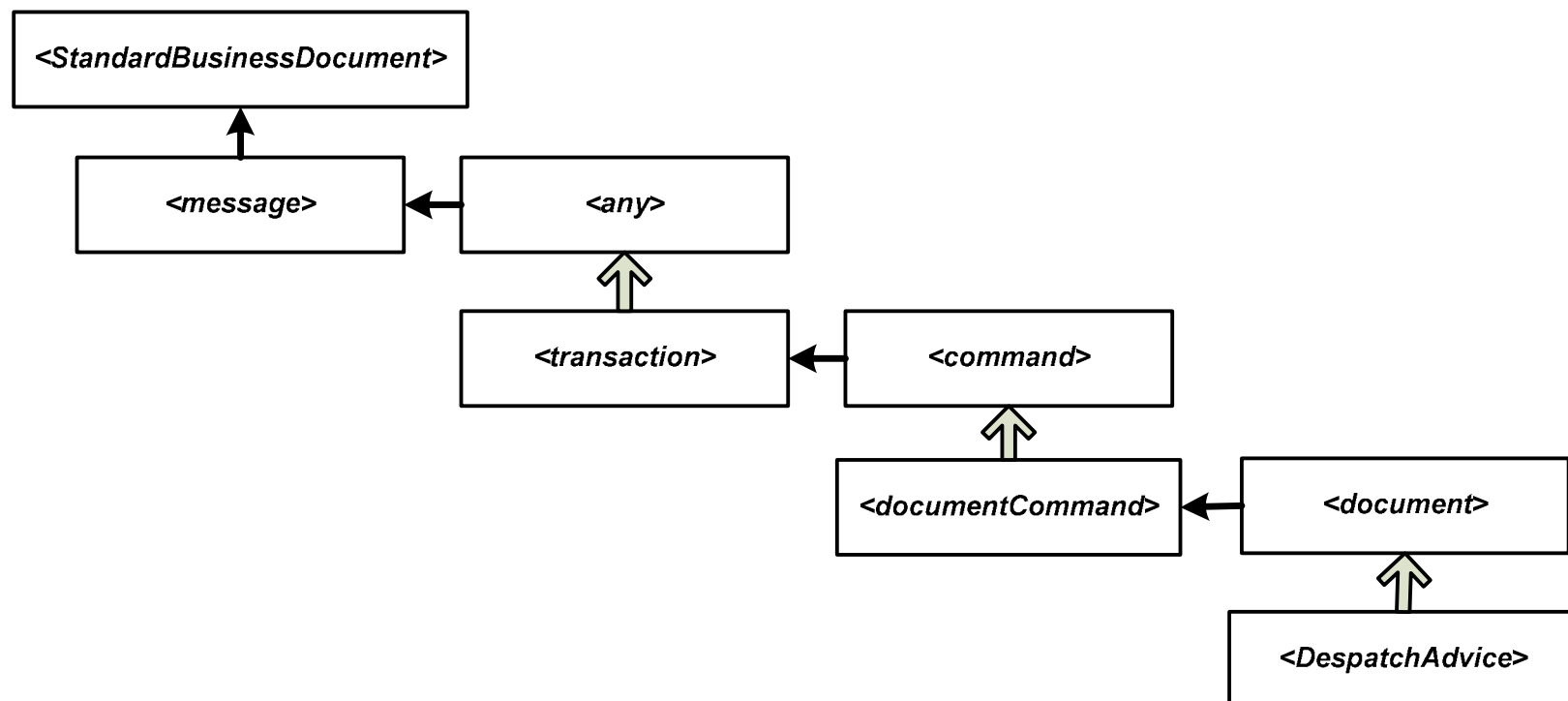
In this section, the GS1 XML path root is:

StandardBusinessDocument→message

(XPath: StandardBusinessDocument / eanucc:message)

All XML paths will assume this starting point unless otherwise stated.

The Message Layer has three sub-layers. The lowest is the *documentCommand* element which wraps around the *despatchAdvice*. *despatchAdvice* replaces an abstract *document* element within the *documentCommand* element. The *documentCommand* element itself replaces an abstract *command* element in the *transaction* element. Finally, the *transaction* element replaces an *any* element in the *message* element. (Refer to [Standard Business Document Header \(SBDH\) Technical Implementation Guide](#) for further details on their usage.) In summary, the links between the layers are:



3.1 Message

3.1.1 Message: <any>

<i>AS5023 Reference</i>	<i>Section:</i>	<i>Group:</i>	<i>Element:</i>
<i>Description/Comments</i>			
<i>GS1 XML Path</i>	<eanucc:message>		
<i>Basic Type</i>	XML type “any”		
<i>Comments</i>	This is the place holder for the “Message Layer” element..		
<i>Schema Constraints</i>	<i>Mandatory:</i> Yes		
	<i>Data Type:</i> any		
	<i>Cardinality:</i> 1..1 (NEHTA requirement)		
	Cardinality as defined in the GS1 XML standard is 1..*		
<i>Co-requisites</i>	entityIdentification (<i>EntityIdentificationType</i>)		
<i>Optional Elements</i>	None		

3.1.2 Message: Identifier

<i>AS5023 Reference</i>	<i>Section:</i>	<i>Group:</i>	<i>Element:</i>
<i>Description/Comments</i>			
<i>GS1 XML Path</i>	entityIdentification→uniqueCreatorIdentification		
<i>Basic Type</i>	Element		
<i>Comments</i>	Shall be set to the Despatch Number as per the uniqueCreatorIdentification element in the despatchAdvice element. This is to allow messaging hubs etc. easy access to the Despatch Number without having to decode the entire XML document. It is redundant information and is not required for processing by either the buyer or the seller.(Note: a prefix such as 'MSG' is one way to ensure it is distinct)		
<i>Schema Constraints</i>	<i>Mandatory:</i> Yes		
	<i>Data Type:</i> string		

	Cardinality: 1..1
<i>Co-requisites</i>	(Relative to entityIdentification→contentOwner) →gln (<i>Global Location Number</i>)
<i>Optional Elements</i>	(Relative to entityIdentification→contentOwner) →additionalPartyIdentification→additionalPartyIdentificationValue (<i>string</i>) →additionalPartyIdentification→additionalPartyIdentificationType (<i>list</i>)

3.1.3 Message: Owner

<i>AS5023 Reference</i>	<i>Section:</i>	<i>Group:</i>	<i>Element:</i>
<i>Description/Comments</i>			
<i>GS1 XML Path</i>	entityIdentification→contentOwner→gln		
<i>Basic Type</i>			
<i>Comments</i>			
<i>Schema Constraints</i>	Mandatory: Yes		
	Data Type: Global Location Number		
	Cardinality: 1..1		
<i>Co-requisites</i>	entityIdentification→uniqueCreatorIdentification (<i>Global Location Number</i>)		
<i>Optional Elements</i>	(Relative to entityIdentification→contentOwner) entityIdentification→contentOwner→additionalPartyIdentification→additionalPartyIdentificationValue (<i>string</i>) entityIdentification→contentOwner→additionalPartyIdentification→additionalPartyIdentificationType (<i>list</i>)		

3.2 Transaction

3.2.1 Transaction Layer

<i>AS5023 Reference</i>	<i>Section:</i>	<i>Group:</i>	<i>Element:</i>
<i>Description/Comments</i>			
<i>GS1 XML Path</i>	<eanucc:transaction>		
<i>Basic Type</i>	XML type “any”		
<i>Comments</i>	This is the place holder for the “Transaction Layer” element.		
<i>Schema Constraints</i>	<i>Mandatory:</i> Yes		
	<i>Data Type:</i> any		
	<i>Cardinality:</i> 1..1		
	Cardinality as defined in the GS1 XML standard is 1..*		
<i>Co-requisites</i>	entityIdentification (<i>EntityIdentificationType</i>)		
<i>Optional Elements</i>	None		

3.2.2 Transaction: Identifier

<i>AS5023 Reference</i>	<i>Section:</i>	<i>Group:</i>	<i>Element:</i>
<i>Description/Comments</i>			
<i>GS1 XML Path</i>	transaction→entityIdentification→uniqueCreatorIdentification		
<i>Basic Type</i>	Element		
<i>Comments</i>	This identifies the transaction, and should be distinct from all other identifiers used in the message. (Note: a prefix such as “TRA” is one way to ensure it is distinct.)		
<i>Schema Constraints</i>	<i>Mandatory:</i> Yes		
	<i>Data Type:</i> string		
	<i>Cardinality:</i> 1..1		

<i>Co-requisites</i>	(Relative to transaction→entityIdentification→contentOwner) →gln (<i>Global Location Number</i>)
<i>Optional Elements</i>	(Relative to transaction→entityIdentification→contentOwner) →additionalPartyIdentification→additionalPartyIdentificationValue (<i>string</i>) →additionalPartyIdentification→additionalPartyIdentificationType (<i>list</i>)

3.2.3 Transaction: Owner

<i>AS5023 Reference</i>	<i>Section:</i>	<i>Group:</i>	<i>Element:</i>
<i>Description/Comments</i>			
<i>GS1 XML Path</i>	Transaction→entityIdentification→contentOwner→gln		
<i>Basic Type</i>			
<i>Comments</i>			
<i>Schema Constraints</i>	<i>Mandatory:</i> Yes		
	<i>Data Type:</i> Global Location Number		
	<i>Cardinality:</i> 1..1		
<i>Co-requisites</i>	Transaction→entityIdentification→uniqueCreatorIdentification (<i>Global Location Number</i>)		
<i>Optional Elements</i>	(Relative to transaction→entityIdentification→contentOwner) →additionalPartyIdentification→additionalPartyIdentificationValue (<i>string</i>) →additionalPartyIdentification→additionalPartyIdentificationType (<i>list</i>)		

3.2.4 Transaction: Command

<i>AS5023 Reference</i>	<i>Section:</i>	<i>Group:</i>	<i>Element:</i>
<i>Description/Comments</i>			
<i>GS1 XML Path</i>	transaction→"command"		

<i>Basic Type</i>	abstract element
<i>Comments</i>	This abstract element is replaced by the documentCommand element. (It is one of three elements in the command substitution group, and the one that is required for Despatch Advice message.)
<i>Schema Constraints</i>	<i>Mandatory:</i> Yes
	<i>Data Type:</i> command
	<i>Cardinality:</i> 1..1
	Cardinality as defined in the GS1 XML standard is 1..*
<i>Co-requisites</i>	transaction→entityIdentification (<i>EntityIdentificationType</i>)
<i>Optional Elements</i>	None

3.3 Document Command

3.3.1 Document Command element

<i>AS5023 Reference</i>	<i>Section:</i>	<i>Group:</i>	<i>Element:</i>
<i>Description/Comments</i>			
<i>GS1 XML Path</i>	transaction→command→<eanucc:documentCommand>		
<i>Basic Type</i>	Complex element		
<i>Comments</i>	This element replaces the command element in the transaction element. documentCommand is one element in the command substitution group.		
<i>Schema Constraints</i>	<i>Mandatory:</i> Yes		
	<i>Data Type:</i> complex element		
	<i>Cardinality:</i> 1..1		
<i>Co-requisites</i>	None		
<i>Optional Elements</i>	None		

3.3.2 Document Command: Type

AS5023 Reference	Section:	Group:	Element:
Description/Comments			
GS1 XML Path	transaction→command→documentCommand→documentCommandHeader→type		
Basic Type	Attribute		
Comments			
Schema Constraints	Mandatory: Yes		
	Data Type: List		
	Cardinality: 1..1		
	<p>Allowable values are:</p> <p>ADD CHANGE_BY_REFRESH CORRECT DELETE</p> <p>ADD must be used when a new Despatch Advice is sent.</p> <p>CHANGE_BY_REFRESH must be used when a Despatch Advice is being changed in any way.</p> <p>CORRECT must not be used.</p> <p>DELETE must be used when the Despatch Advice is to be cancelled.</p>		
Co-requisites	(Relative to transaction→command→documentCommand→documentCommandHeader) →uniqueCreatorIdentification (<i>string</i>) →contentOwner→gln (<i>Global Location Number</i>)		
Optional Elements	(Relative to transaction→command→documentCommand→documentCommandHeader→contentOwner) →additionalPartyIdentification→additionalPartyIdentificationValue (<i>string</i>) →additionalPartyIdentification→additionalPartyIdentificationType (<i>list</i>)		

3.3.3 Document Command: Identifier

AS5023 Reference	Section:	Group:	Element:
Description/Comments			
GS1 XML Path	transaction→command→documentCommand→documentCommandHeader→entityIdentification→uniqueCreatorIdentification		

<i>Basic Type</i>	Element
<i>Comments</i>	This identifies the transaction, and should be distinct from all other identifiers used in the message. (Note: a prefix such as “CMD” is one way to ensure it is distinct.)
<i>Schema Constraints</i>	<i>Mandatory:</i> Yes
	<i>Data Type:</i> string
	<i>Cardinality:</i> 1..1
<i>Co-requisites</i>	(Relative to transaction→command→documentCommand→documentCommandHeader →entityIdentification→contentOwner) →gln (<i>Global Location Number</i>)
<i>Optional Elements</i>	(Relative to transaction→entityIdentification→contentOwner) →additionalPartyIdentification→additionalPartyIdentificationValue (<i>string</i>) →additionalPartyIdentification→additionalPartyIdentificationType (<i>list</i>)

3.3.4 Document Command: Owner

<i>AS5023 Reference</i>	<i>Section:</i>	<i>Group:</i>	<i>Element:</i>
<i>Description/Comments</i>			
<i>GS1 XML Path</i>	transaction→ command→documentCommand→documentCommandHeader→entityIdentification→contentOwner→gln		
<i>Basic Type</i>			
<i>Comments</i>			
<i>Schema Constraints</i>	<i>Mandatory:</i> Yes		
	<i>Data Type:</i> Global Location Number		
	<i>Cardinality:</i> 1..1		
<i>Co-requisites</i>	transaction→command→documentCommand→documentCommandHeader→entityIdentification→uniqueCreatorIdentification (<i>Global Location Number</i>)		

<i>Optional Elements</i>	(Relative to transaction→entityIdentification→contentOwner) →additionalPartyIdentification→additionalPartyIdentificationValue (<i>string</i>) →additionalPartyIdentification→additionalPartyIdentificationType (<i>list</i>)
--------------------------	--

3.3.5 Document Command: Business Document

<i>AS5023 Reference</i>	<i>Section:</i>	<i>Group:</i>	<i>Element:</i>
<i>Description/Comments</i>			
<i>GS1 XML Path</i>	transaction→command→documentCommand→documentCommandOperand→document		
<i>Basic Type</i>	abstract element		
<i>Comments</i>	This element is replaced with the Business Document payload i.e. despatchAdvice		
<i>Schema Constraints</i>	<i>Mandatory:</i> Yes		
	<i>Data Type:</i> abstract document		
	<i>Cardinality:</i> 1..1		
	Cardinality as defined in the GS1 XML standard is 1..*		
<i>Co-requisites</i>	(Relative to transaction→command→documentCommand→documentCommandHeader) →type (<i>Attribute list</i>) →uniqueCreatorIdentification (<i>string</i>) →contentOwner→gln (<i>Global Location Number</i>)		
<i>Optional Elements</i>	(Relative to transaction→command→documentCommand→documentCommandHeader→contentOwner) →additionalPartyIdentification→additionalPartyIdentificationValue (<i>string</i>) →additionalPartyIdentification→additionalPartyIdentificationType (<i>list</i>)		

4 Business Document Layer Message Elements

This layer covers the Despatch Advice message.

In this section, the GS1 XML path root is:

StandardBusinessDocument→message→transaction→command→documentCommand→documentCommandOperand→despatchAdvice

(XPath: StandardBusinessDocument / eanucc:message / eanucc:transaction / command / eanucc:documentCommand / documentCommandOperand / deliver:despatchAdvice)

All XML paths will assume this starting point unless otherwise stated.

This section lists additional fields that are not explicitly mentioned in the AS5023 specification, but are related to those that are and do provide support for the AS5023 requirements, or are specified as mandatory by GS1.

4.1 Comments

This section contains comments on topics impact a number of data elements.

4.1.1 Item Perspective vs Packaging Perspective

The Despatch XML document may be viewed from either an item perspective (*despatchAdviceItemContainmentLineItem* element) or a packaging perspective (*despatchAdviceLogisticsUnitLineItem* element), but not both. The packaging perspective does contain *despatchAdviceItemContainmentLineItem* as a child element, but the data in this element is about the items contained inside the nominated package. A full data set is held by this structure, but for some common views on the Despatch Advice, the data has to be derived rather than extracted. For example, the packaging perspective gives the quantity of each item contained in a package. To get the total quantity of a particular item in the shipment, the quantities of that item in each individual package must be summed together. Similarly, there is no list attached to an item which identifies all the packages in which it is held. However it can be derived in a similar manner to the total shipped quantity of an item.

4.1.2 Expiry Dates, Lot Numbers etc.

The *despatchAdviceLogisticsUnitLineItem* element contains elements for Expiry Dates, Best Before Dates, Shelf Life, Lot Number, Batch Number, and Serial Number. These are all child data elements of a specific item. Consequently if there are multiple values for these elements for the items in the shipment, there must be multiple *despatchAdviceLogisticsUnitLineItem* elements which have the same item GTIN. For example, if in a shipment of 1,000 items, 600 had an Expiry date of 30 June and 400 expired on 31 July, there would be two *despatchAdviceLogisticsUnitLineItem* elements. Both would have the same GTIN, but one would have a quantity of 600 and an Expiry Date of 30 June, and the other a quantity of 400 and Expiry Date of 31 July.

All of these data elements are closely related in practice, so there should be a combined strategy for processing them all.

4.1.3 Original Purchase Order Reference

The AS5023 specification placed the Purchase Order number in the header and the Purchase Order Line in the details section. This has the effect of limiting a Despatch Advice/ASN to a single Purchase Order. The GS1 XML schema has complete Purchase Order reference data at both header and line level (*purchaseOrder* element). In both cases, the Purchase Order reference may be with or without a Purchase Order Line Number.

It is recommended that only the line level Purchase Order reference data be used as this allows a shipment to contain items from multiple Purchase Orders. This will cover all cases, and using only one mechanism will give consistency in processing.

4.1.4 Despatch Advice vs Advance Shipping Notice

This same document serves as both a Despatch Advice and an Advance Shipping Notice (ASN). For a Despatch Advice, the *despatchInformation*→*actualShipping* element is used. For an ASN, the *despatchInformation*→*estimatedDelivery* element is used.

4.1.5 Supporting Documents

The GS1 XML schema has elements for several supporting documents, but only Delivery Note and Consignment Note are included in this version of the NEHTA standard. Both the Delivery Note and the Consignment Note can occur at the header level, or at a detail level using either the item level *despatchAdviceItemContainmentLineItem* element, or the packaging level *despatchAdviceLogisticsUnitLineItem* element through the use of the *despatchAdviceItemContainmentLineItem* child element. (As per 4.1.1 Item Perspective vs Packaging Perspective, either the item level or packaging level will be used, but not both.) At the header level only the document number is recorded, but both the document and line number is recorded at the detail level to allow the specific item to be linked to the specific line on the Delivery or Consignment Note.

These elements are all optional based on the schema definition, but if used then both the header and detail level elements must be used.

4.2 Message Function

<i>AS5023 Reference</i>	<i>Section: Header</i>	<i>Group: Opening</i>	<i>Element: Message Function</i>
<i>Description/Comments</i>			
<i>GS1 XML Path</i>	documentStatus		
<i>Basic Type</i>	Attribute		
<i>Comments</i>			
<i>Schema Constraints</i>	<i>Mandatory: Yes</i>		

	Data Type: List
	Cardinality: 1..1
	Allowable values: COPY ORIGINAL REPLACE
	If REPLACE is used, then <i>lastUpdateDate</i> must also be entered.
Co-requisites	<p>creationDateTime (<i>Attribute dateTime</i>)</p> <p>despatchAdviceIdentification→uniqueCreatorIdentification (<i>string</i>)</p> <p>shipTo→gln (<i>Global Location Number</i>)</p> <p>receiver→gln (<i>Global Location Number</i>)</p> <p>shipper→gln (<i>Global Location Number</i>)</p> <p>Choice – one of:</p> <ul style="list-style-type: none"> despatchInformation→actualShipping→actualShipDateTime (<i>dateTime</i>) despatchInformation→estimatedDelivery→estimatedDeliveryDateTime (<i>dateTime</i>) <p><i>Note: estimatedDeliveryDateTime is itself part of a nested choice group and may be substituted by estimatedDeliveryPeriod</i></p> <p>Choice – one of:</p> <ul style="list-style-type: none"> despatchAdviceLogisticUnitLineItem (<i>DespatchAdviceLogisticUnitLineItemType</i>) despatchAdviceItemContainmentLineItem (<i>DespatchAdviceItemContainmentLineItemType</i>)

Optional Elements	lastUpdateDate (<i>Attribute date</i>)
	contentVersion (<i>VersionType</i>)
	documentStructureVersion (<i>versionType</i>)
	shipFrom (<i>PartyIdentificationType</i>)
	carrier (<i>PartyIdentificationType</i>)
	pickUpLocation (<i>PartyIdentificationType</i>)
	inventoryLocation (<i>PartyIdentificationType</i>)
	purchaseOrderDocumentOrDocumentLineReference (<i>DocumentOrDocumentLineReferenceType</i>)
	purchaseConditions (<i>DocumentOrDocumentLineReferenceType</i>)
	deliveryNote (<i>ReferenceType</i>)
	contract (<i>ReferenceType</i>)
	productCertification (<i>ReferenceType</i>)
	specification (<i>ReferenceType</i>)
	declarantsCustomsIdentity (<i>ReferenceType</i>)
	consignmentInformation (<i>ConsignmentInformationType</i>)
	deliveryAndTransportInformation (<i>DeliveryAndTransportInformationType</i>)
	shipToNameAndAddress (<i>NameAndAddressType</i>)

4.3 Last Update Date

AS5023 Reference	Section:	Group:	Element:
Description/Comments	Related to Message Function		
GS1 XML Path	lastUpdateDate		
Basic Type	Attribute		
Comments			
Schema Constraints	Mandatory: Yes (NEHTA Requirement)		
	Data Type: date		
	Cardinality: 0..1		

	This attribute must be used if <i>documentStatus</i> = “REPLACE”
Co-requisites	<p>→creationDateTime (<i>dateTime</i>)</p> <p>→documentStatus (<i>list</i>)</p> <p>→despatchAdviceIdentification→uniqueCreatorIdentification (<i>string</i>)</p> <p>shipTo→gln (<i>Global Location Number</i>)</p> <p>receiver→gln (<i>Global Location Number</i>)</p> <p>shipper→gln (<i>Global Location Number</i>)</p> <p>Choice – one of:</p> <p> despatchInformation→actualShipping→actualShipDateTime (<i>dateTime</i>)</p> <p> despatchInformation→estimatedDelivery→estimatedDeliveryDateTime (<i>dateTime</i>)</p> <p> <i>Note: estimatedDeliveryDateTime is itself part of a nested choice group and may be substituted by estimatedDeliveryPeriod</i></p> <p>Choice – one of:</p> <p> despatchAdviceLogisticUnitLineItem (<i>DespatchAdviceLogisticUnitLineItemType</i>)</p> <p>despatchAdviceItemContainmentLineItem (<i>DespatchAdviceItemContainmentLineItemType</i>)</p>
Optional Elements	<p>contentVersion (<i>VersionType</i>)</p> <p>documentStructureVersion (<i>versionType</i>)</p> <p>shipFrom (<i>PartyIdentificationType</i>)</p> <p>carrier (<i>PartyIdentificationType</i>)</p> <p>pickUpLocation (<i>PartyIdentificationType</i>)</p> <p>inventoryLocation (<i>PartyIdentificationType</i>)</p> <p>purchaseOrderDocumentOrDocumentLineReference (<i>DocumentOrDocumentLineReferenceType</i>)</p> <p>purchaseConditions (<i>DocumentOrDocumentLineReferenceType</i>)</p> <p>deliveryNote (<i>ReferenceType</i>)</p> <p>contract (<i>ReferenceType</i>)</p> <p>productCertification (<i>ReferenceType</i>)</p> <p>specification (<i>ReferenceType</i>)</p> <p>declarantsCustomsIdentity (<i>ReferenceType</i>)</p> <p>consignmentInformation (<i>ConsignmentInformationType</i>)</p> <p>deliveryAndTransportInformation (<i>DeliveryAndTransportInformationType</i>)</p> <p>shipToNameAndAddress (<i>NameAndAddressType</i>)</p>

4.4 Despatch Advice Creation Date

<i>AS5023 Reference</i>	<i>Section:</i> Header	<i>Group:</i> Opening	<i>Element:</i> Despatch advice creation date/time
<i>Description/Comments</i>	Time is optional		
<i>GS1 XML Path</i>	creationDateTime		
<i>Basic Type</i>	Attribute		
<i>Comments</i>			
<i>Schema Constraints</i>	<i>Mandatory:</i> Yes		
	<i>Data Type:</i> dateTime		
	<i>Cardinality:</i> 1..1		
<i>Co-requisites</i>	<p>documentStatus (<i>Attribute list</i>)</p> <p>despatchAdviceIdentification→uniqueCreatorIdentification (<i>string</i>)</p> <p>shipTo→gln (<i>Global Location Number</i>)</p> <p>receiver→gln (<i>Global Location Number</i>)</p> <p>shipper→gln (<i>Global Location Number</i>)</p> <p>Choice – one of:</p> <p> despatchInformation→actualShipping→actualShipDateTime (<i>dateTime</i>)</p> <p> despatchInformation→estimatedDelivery→estimatedDeliveryDateTime (<i>dateTime</i>)</p> <p> <i>Note: estimatedDeliveryDateTime is itself part of a nested choice group and may be substituted by estimatedDeliveryPeriod</i></p> <p>Choice – one of:</p> <p> despatchAdviceLogisticUnitLineItem (<i>DespatchAdviceLogisticUnitLineItemType</i>)</p> <p> despatchAdviceItemContainmentLineItem (<i>DespatchAdviceItemContainmentLineItemType</i>)</p>		

<i>Optional Elements</i>	lastUpdateDate (<i>Attribute date</i>)
	contentVersion (<i>VersionType</i>)
	documentStructureVersion (<i>versionType</i>)
	shipFrom (<i>PartyIdentificationType</i>)
	carrier (<i>PartyIdentificationType</i>)
	pickUpLocation (<i>PartyIdentificationType</i>)
	inventoryLocation (<i>PartyIdentificationType</i>)
	purchaseOrderDocumentOrDocumentLineReference (<i>DocumentOrDocumentLineReferenceType</i>)
	purchaseConditionsDocumentOrDocumentLineReference (<i>DocumentOrDocumentLineReferenceType</i>)
	deliveryNote (<i>ReferenceType</i>)
	contract (<i>ReferenceType</i>)
	productCertification (<i>ReferenceType</i>)
	specification (<i>ReferenceType</i>)
	declarantsCustomsIdentity (<i>ReferenceType</i>)
	consignmentInformation (<i>ConsignmentInformationType</i>)
	deliveryAndTransportInformation (<i>DeliveryAndTransportInformationType</i>)
	shipToNameAndAddress (<i>NameAndAddressType</i>)

4.5 Despatch Date

<i>AS5023 Reference</i>	Section: Header	Group: Opening	Element: Despatch date/time
<i>Description/Comments</i>	Time is optional		
<i>GS1 XML Path</i>	despatchInformation→despatchDateTime		
<i>Basic Type</i>	Element		
<i>Comments</i>			
<i>Schema Constraints</i>	Mandatory: No (NEHTA requirement)		
	Data Type: dateTime		
	Cardinality: 0..1		

<i>Co-requisites</i>	
<i>Optional Elements</i>	despatchInformation→loadingDateTime despatchInformation→pickupDateTime despatchInformation→releaseDateTimeOfSupplier

4.6 Despatch Advice Reference Number

<i>AS5023 Reference</i>	<i>Section:</i> Header	<i>Group:</i> Despatch advice reference number	<i>Element:</i> Despatch advice reference number
<i>Description/Comments</i>			
<i>GS1 XML Path</i>	despatchAdviceIdentification→uniqueCreatorIdentification		
<i>Basic Type</i>	Element		
<i>Comments</i>			
<i>Schema Constraints</i>	<i>Mandatory:</i> Yes		
	<i>Data Type:</i> string		
	<i>Cardinality:</i> 1..1		
	This identifier is maintained by the Seller and should uniquely identify the Depatch Advice.		
<i>Co-requisites</i>	<p>contentOwner→gln (<i>Global Location Number</i>)</p> <p>documentStatus (<i>Attribute list</i>)</p> <p>creationDateTime (<i>Attribute dateTime</i>)</p> <p>shipTo→gln (<i>Global Location Number</i>)</p> <p>receiver→gln (<i>Global Location Number</i>)</p> <p>shipper→gln (<i>Global Location Number</i>)</p> <p>Choice – one of:</p> <p> despatchInformation→actualShipping→actualShipDateTime (<i>dateTime</i>)</p> <p> despatchInformation→estimatedDelivery→estimatedDeliveryDateTime (<i>dateTime</i>)</p> <p> <i>Note: estimatedDeliveryDateTime is itself part of a nested choice group and may be substituted by estimatedDeliveryPeriod</i></p> <p>Choice – one of:</p> <p> despatchAdviceLogisticUnitLineItem (<i>DespatchAdviceLogisticUnitLineItemType</i>)</p> <p>despatchAdviceItemContainmentLineItem (<i>DespatchAdviceItemContainmentLineItemType</i>)</p>		

Optional Elements	<p>(Relative to despatchAdviceIdentification→contentOwner→additionalPartyIdentification) →additionalPartyIdentificationValue (<i>string</i>) →additionalPartyIdentificationType (<i>AdditionalPartyIdentificationListType</i>)</p> <p>lastUpdateDate (<i>Attribute date</i>) contentVersion (<i>VersionType</i>) documentStructureVersion (<i>versionType</i>) shipFrom (<i>PartyIdentificationType</i>) carrier (<i>PartyIdentificationType</i>) pickUpLocation (<i>PartyIdentificationType</i>) inventoryLocation (<i>PartyIdentificationType</i>) purchaseOrderDocumentOrDocumentLineReference (<i>DocumentOrDocumentLineReferenceType</i>) purchaseConditionsDocumentOrDocumentLineReference (<i>DocumentOrDocumentLineReferenceType</i>) deliveryNote (<i>ReferenceType</i>) contract (<i>ReferenceType</i>) productCertification (<i>ReferenceType</i>) specification (<i>ReferenceType</i>) declarantsCustomsIdentity (<i>ReferenceType</i>) consignmentInformation (<i>ConsignmentInformationType</i>) deliveryAndTransportInformation (<i>DeliveryAndTransportInformationType</i>) shipToNameAndAddress (<i>NameAndAddressType</i>)</p>
--------------------------	--

4.6.1 Delivery Note (Header Level)

AS5023 Reference	Section:	Group:	Element:
Description/Comments	Related to Despatch Advice Reference Number		
GS1 XML Path	deliveryNote→referenceIdentification		
Basic Type	Element		
Comments	If used, then is must be used at both the header and detail levels. (See 4.1.5 Supporting Documents)		

<i>Schema Constraints</i>	<i>Mandatory:</i> No
	<i>Data Type:</i> string
	<i>Cardinality:</i> 1..1
<i>Co-requisites</i>	deliveryNote→referenceDateTime (<i>dateTime</i>)
<i>Optional Elements</i>	None

4.6.2 Delivery Note Date (Header Level)

<i>AS5023 Reference</i>	<i>Section:</i>	<i>Group:</i>	<i>Element:</i>
<i>Description/Comments</i>	Related to Despatch Advice Reference Number		
<i>GS1 XML Path</i>	deliveryNote→referenceDateTime		
<i>Basic Type</i>	Element		
<i>Comments</i>	If used, then is must be used at both the header and detail levels. (See 4.1.5 Supporting Documents)		
<i>Schema Constraints</i>	<i>Mandatory:</i> No		
	<i>Data Type:</i> dateTime		
	<i>Cardinality:</i> 1..1		
<i>Co-requisites</i>	deliveryNote→referenceIdentification (<i>string</i>)		
<i>Optional Elements</i>	None		

4.6.3 Delivery Note (Detail Level)

<i>AS5023 Reference</i>	<i>Section:</i>	<i>Group:</i>	<i>Element:</i>
<i>Description/Comments</i>	Related to Despatch Advice Reference Number		

<i>GS1 XML Path</i>	(Relative to despatchAdviceItemContainmentLineItem or despatchAdviceLogisticUnitLineItem→despatchAdviceItemContainmentLineItem) deliveryNote→reference→referenceIdentification
<i>Basic Type</i>	Element
<i>Comments</i>	If used, then is must be used at both the header and detail levels. (See 4.1.5 Supporting Documents)
<i>Schema Constraints</i>	Mandatory: No
	Data Type: string
	Cardinality: 1..1
<i>Co-requisites</i>	(Relative to despatchAdviceItemContainmentLineItem or despatchAdviceLogisticUnitLineItem→despatchAdviceItemContainmentLineItem) →deliveryNote→reference→referenceDateTime (<i>dateTime</i>) →number (<i>Non-negative Integer</i>)
<i>Optional Elements</i>	None

4.6.4 Delivery Note Date (Detail Level)

<i>AS5023 Reference</i>	<i>Section:</i>	<i>Group:</i>	<i>Element:</i>
<i>Description/Comments</i>	Related to Despatch Advice Reference Number		
<i>GS1 XML Path</i>	(Relative to despatchAdviceItemContainmentLineItem or despatchAdviceLogisticUnitLineItem→despatchAdviceItemContainmentLineItem) deliveryNote→reference→referenceDateTime		
<i>Basic Type</i>	Element		
<i>Comments</i>	If used, then is must be used at both the header and detail levels. (See 4.1.5 Supporting Documents)		
<i>Schema Constraints</i>	Mandatory: No		
	Data Type: dateTime		
	Cardinality: 1..1		

<i>Co-requisites</i>	(Relative to or →deliveryNote→reference→referenceIdentification (<i>string</i>) →deliveryNote→number (<i>Non-negative Integer</i>)
<i>Optional Elements</i>	None

4.6.5 Delivery Note Line Number (Detail Level)

<i>AS5023 Reference</i>	<i>Section:</i>	<i>Group:</i>	<i>Element:</i>
<i>Description/Comments</i>	Related to Despatch Advice Reference Number		
<i>GS1 XML Path</i>	(Relative to or →deliveryNote→number		
<i>Basic Type</i>	Attribute		
<i>Comments</i>	Delivery Note Line Number is not available at the header level. (See 4.1.5 Supporting Documents)		
<i>Schema Constraints</i>	<i>Mandatory:</i> No		
	<i>Data Type:</i> Non-negative Number		
	<i>Cardinality:</i> 1..1		
<i>Co-requisites</i>	(Relative to or →deliveryNote→reference→referenceIdentification (<i>string</i>) →deliveryNote→reference→referenceDateTime (<i>dateTime</i>)		
<i>Optional Elements</i>	None		

4.6.6 Consignment Note (Header Level)

AS5023 Reference	Section:	Group:	Element:
Description/Comments	Related to Despatch Advice Reference Number		
GS1 XML Path	consignmentInformation→consignmentIdentification→referenceIdentification		
Basic Type	Element		
Comments	If used, then is must be used at both the header and detail levels. (See 4.1.5 Supporting Documents)		
Schema Constraints	Mandatory: No		
	Data Type: string		
	Cardinality: 1..1		
Co-requisites	(Relative to consignmentInformation) →consignmentIdentification→referenceDateTime (<i>dateTime</i>) →packageInformation→numberOfUnits (<i>integer</i>)		
Optional Elements	→consignedItemWeight (<i>ConsignedItemWeightType</i>) →unitMeasurement (<i>UnitMeasurementType</i>)		

4.6.7 Consignment Note Date (Header Level)

AS5023 Reference	Section:	Group:	Element:
Description/Comments	Related to Despatch Advice Reference Number		
GS1 XML Path	consignmentInformation→consignmentInformation→consignmentIdentification→ referenceDateTime		
Basic Type	Element		
Comments	If used, then is must be used at both the header and detail levels. (See 4.1.5 Supporting Documents)		
Schema Constraints	Mandatory: No		
	Data Type: DateTime		
	Cardinality: 1..1		

<i>Co-requisites</i>	(Relative to consignmentInformation) →consignmentIdentification→referenceIdentification (<i>string</i>) →packageInformation→numberOfUnits (<i>integer</i>)
<i>Optional Elements</i>	None

4.6.8 Consignment Note (Detail Level)

<i>AS5023 Reference</i>	<i>Section:</i>	<i>Group:</i>	<i>Element:</i>
<i>Description/Comments</i>	Related to Despatch Advice Reference Number		
<i>GS1 XML Path</i>	(Relative to despatchAdviceItemContainmentLineItem or despatchAdviceLogisticUnitLineItem→despatchAdviceItemContainmentLineItem) →consignment →reference →referenceIdentification		
<i>Basic Type</i>	Element		
<i>Comments</i>	If used, then is must be used at both the header and detail levels. (See 4.1.5 Supporting Documents)		
<i>Schema Constraints</i>	<i>Mandatory:</i> No		
	<i>Data Type:</i> string		
	<i>Cardinality:</i> 1..1		
<i>Co-requisites</i>	(Relative to despatchAdviceItemContainmentLineItem or despatchAdviceLogisticUnitLineItem→despatchAdviceItemContainmentLineItem) →consignment →reference→referenceDateTime (<i>dateTime</i>) →consignment →number (<i>Non-negative Integer</i>)		
<i>Optional Elements</i>	None		

4.6.9 Consignment Note Date (Detail Level)

AS5023 Reference	Section:	Group:	Element:
Description/Comments	Related to Despatch Advice Reference Number		
GS1 XML Path	(Relative to despatchAdviceItemContainmentLineItem or despatchAdviceLogisticUnitLineItem→despatchAdviceItemContainmentLineItem) consignment→reference→referenceDateTime		
Basic Type	Element		
Comments	If used, then is must be used at both the header and detail levels. (See 4.1.5 Supporting Documents)		
Schema Constraints	Mandatory: No		
	Data Type: DateTime		
	Cardinality: 1..1		
Co-requisites	(Relative to despatchAdviceItemContainmentLineItem or despatchAdviceLogisticUnitLineItem→despatchAdviceItemContainmentLineItem) →consignment→reference→referenceIdentification (string) →consignment→number (Non-negative Integer)		
Optional Elements	None		

4.6.10 Consignment Note Line Number (Detail Level)

AS5023 Reference	Section:	Group:	Element:
Description/Comments	Related to Despatch Advice Reference Number		
GS1 XML Path	(Relative to despatchAdviceItemContainmentLineItem or despatchAdviceLogisticUnitLineItem→despatchAdviceItemContainmentLineItem) →consignment→number		
Basic Type	Attribute		
Comments	Consignment Note Line Number is not available at the header level. (See 4.1.5 Supporting Documents)		
Schema Constraints	Mandatory: No		

	<i>Data Type:</i> Non-negative Integer
	<i>Cardinality:</i> 1..1
<i>Co-requisites</i>	(Relative to despatchAdviceItemContainmentLineItem or despatchAdviceLogisticUnitLineItem→despatchAdviceItemContainmentLineItem) →consignment→reference →referenceIdentification (<i>string</i>) →consignment→reference→referenceDateTime (<i>dateTime</i>)
<i>Optional Elements</i>	None

4.7 Despatch Advice Creator

<i>AS5023 Reference</i>	<i>Section:</i>	<i>Group:</i>	<i>Element:</i>
<i>Description/Comments</i>	Related to Despatch Advice Reference Number. Required by GS1.		
<i>GS1 XML Path</i>	despatchAdviceIdentification→contentOwner→gln		
<i>Basic Type</i>	Element		
<i>Comments</i>			
<i>Schema Constraints</i>	<i>Mandatory:</i> Yes		
	<i>Data Type:</i> Global Location Number		
	<i>Cardinality:</i> 1..1		

<i>Co-requisites</i>	<p>uniqueCreatorIdentification (<i>string</i>)</p> <p>documentStatus (<i>Attribute list</i>)</p> <p>creationDateTime (<i>Attribute dateTime</i>)</p> <p>shipTo→gln (<i>Global Location Number</i>)</p> <p>receiver→gln (<i>Global Location Number</i>)</p> <p>shipper→gln (<i>Global Location Number</i>)</p> <p>Choice – one of:</p> <p> despatchInformation→actualShipping→actualShipDateTime (<i>dateTime</i>)</p> <p> despatchInformation→estimatedDelivery→estimatedDeliveryDateTime (<i>dateTime</i>)</p> <p> <i>Note: estimatedDeliveryDateTime is itself part of a nested choice group and may be substituted by estimatedDeliveryPeriod</i></p> <p>Choice – one of:</p> <p> despatchAdviceLogisticUnitLineItem (<i>DespatchAdviceLogisticUnitLineItemType</i>)</p> <p>despatchAdviceItemContainmentLineItem (<i>DespatchAdviceItemContainmentLineItemType</i>)</p>
<i>Optional Elements</i>	<p>(Relative to despatchAdviceIdentification→contentOwner→additionalPartyIdentification)</p> <p>→additionalPartyIdentificationValue (<i>string</i>)</p> <p>→additionalPartyIdentificationType (<i>AdditionalPartyIdentificationListType</i>)</p>

4.8 Order Number

<i>AS5023 Reference</i>	<i>Section:</i> Header	<i>Group:</i> Order details	<i>Element:</i> Order Number
<i>Description/Comments</i>			
<i>GS1 XML Path</i>	purchaseOrderDocumentOrDocumentLineReference→documentReference→uniqueCreatorIdentification		
<i>Basic Type</i>	Element		
<i>Comments</i>			
<i>Schema Constraints</i>	<i>Mandatory:</i> No		
	<i>Data Type:</i> string		
	<i>Cardinality:</i> 1..1		

	purchaseOrderDocumentOrDocumentLineReference is a complex type which has a choice grouping of documentReference and documentLineReference. Only documentReference should be used at the header level to identify the Purchase Order. The purchaseOrder (DocumentOrDocumentLineReferenceType) structure also exists at the Despatch Advice Line level which can be used to link specific items on the despatch list to specific lines on the original Purchase Order.
<i>Co-requisites</i>	(Relative to purchaseOrderDocumentOrDocumentLineReference→documentReference) →creationDateTime (<i>dateTime</i>) →contentOwner→gln (<i>Global Location Number</i>)
<i>Optional Elements</i>	(Relative to purchaseOrderDocumentOrDocumentLineReference→documentReference) →additionalPartyIdentificationValue (<i>string</i>) →additionalPartyIdentificationType (<i>AdditionalPartyIdentificationListType</i>)

4.9 Order Date

<i>AS5023 Reference</i>	<i>Section:</i> Header	<i>Group:</i> Order Details	<i>Element:</i> Order date
<i>Description/Comments</i>			
<i>GS1 XML Path</i>	purchaseOrderDocumentOrDocumentLineReference→documentReference→creationDateTime		
<i>Basic Type</i>	Attribute		
<i>Comments</i>			
<i>Schema Constraints</i>	<i>Mandatory:</i> No		
	<i>Data Type:</i> dateTime		
	<i>Cardinality:</i> 1..1		
<i>Co-requisites</i>	(Relative to purchaseOrderDocumentOrDocumentLineReference→documentReference) →uniqueCreatorIdentification (<i>string</i>) →contentOwner→gln (<i>Global Location Number</i>)		

<i>Optional Elements</i>	(Relative to purchaseOrderDocumentOrDocumentLineReference→documentReference) →additionalPartyIdentificationValue (<i>string</i>) →additionalPartyIdentificationType (<i>AdditionalPartyIdentificationListType</i>)
--------------------------	--

4.10 Order Creator

<i>AS5023 Reference</i>	<i>Section:</i>	<i>Group:</i>	<i>Element:</i>
<i>Description/Comments</i>	Related to Order Number - Required by GS1		
<i>GS1 XML Path</i>	purchaseOrderDocumentOrDocumentLineReference→documentReference→contentOwner→gln		
<i>Basic Type</i>	Element		
<i>Comments</i>			
<i>Schema Constraints</i>	<i>Mandatory:</i> No		
	<i>Data Type:</i> Global Location Number		
	<i>Cardinality:</i> 1..1		
<i>Co-requisites</i>	(Relative to purchaseOrderDocumentOrDocumentLineReference→documentReference) →uniqueCreatorIdentification (<i>string</i>) →creationDateTime (<i>dateTime</i>)		
<i>Optional Elements</i>	(Relative to purchaseOrderDocumentOrDocumentLineReference→documentReference) →additionalPartyIdentificationValue (<i>string</i>) →additionalPartyIdentificationType (<i>AdditionalPartyIdentificationListType</i>)		

4.11 Carrier

<i>AS5023 Reference</i>	<i>Section:</i> Heaer	<i>Group:</i> Carrier	<i>Element:</i> Carrier reference number
<i>Description/Comments</i>	This identifies the carrier used.		
<i>GS1 XML Path</i>	carrier→gln		

<i>Basic Type</i>	Element
<i>Comments</i>	
<i>Schema Constraints</i>	<i>Mandatory:</i> No
	<i>Data Type:</i> Global Location Number
	<i>Cardinality:</i> 1..1
<i>Co-requisites</i>	None
<i>Optional Elements</i>	(Relative to carrier) →additionalPartyIdentificationValue (<i>string</i>) →additionalPartyIdentificationType (<i>AdditionalPartyIdentificationListType</i>)

4.12 Delivery and Despatch Dates

4.12.1 Comments

The delivery date is located within two elements which form a choice group: *estimatedDelivery* and *actualShipping*. Each holds the same information but from a different perspective. The *estimatedDelivery* element should be used unless there is a specific request by the buyer for Actual Shipping data. These two elements also hold the actual shipping date.

The following section describes the component elements just once for both parent elements: *estimatedDelivery* and *actualShipping*. Except as noted, the component elements behave identically in both parent elements. Element paths are stated as relative to either of the parent elements as the name of the parent element is the only difference.

In *estimatedDelivery*, *estimatedDeliveryDateTime* is mandatory and all other elements are optional.

In *actualShipping*, *actualShipDateTime* is mandatory and all other elements are optional.

4.12.2 Delivery Date

<i>AS5023 Reference</i>	<i>Section:</i> Header	<i>Group:</i> Delivery and despatch	<i>Element:</i> Despatch date
<i>Description/Comments</i>			
<i>GS1 XML Path</i>	(Relative to either despatchInformation→estimatedDelivery or despatchInformation→actualShipping) estimatedDeliveryDateTime		
<i>Basic Type</i>	Element		
<i>Comments</i>			
<i>Schema Constraints</i>	<i>Mandatory:</i> No		
	<i>Data Type:</i> dateTime		
	<i>Cardinality:</i> 1..1 in <i>estimatedDelivery</i> 0..1 in <i>actualShipping</i>		
<i>Co-requisites</i>	Refer to 4.12.1 Comments		
<i>Optional Elements</i>	(Relative to either despatchInformation→estimatedDelivery or despatchInformation→actualShipping) →actualShipDateTime (<i>dateTime</i>) (Refer to 4.12.1 Comments) →estimatedDeliveryPeriod (<i>TimeOrDateTimePeriod</i>)		

4.12.3 Actual Ship Date

<i>AS5023 Reference</i>	<i>Section:</i> Header	<i>Group:</i> Delivery and despatch	<i>Element:</i> Despatch date
<i>Description/Comments</i>			
<i>GS1 XML Path</i>	(Relative to either despatchInformation→estimatedDelivery or despatchInformation→actualShipping) actualShipDateTime		
<i>Basic Type</i>	Element		

<i>Comments</i>	
<i>Schema Constraints</i>	<i>Mandatory:</i> No
	<i>Data Type:</i> dateTime
	<i>Cardinality:</i> 0..1 in <i>estimatedDelivery</i> 1..1 in <i>actualShipping</i>
<i>Co-requisites</i>	Refer to 4.12.1 Comments
<i>Optional Elements</i>	(Relative to either despatchInformation→estimatedDelivery or despatchInformation→actualShipping) →estimatedDeliveryDateTime (<i>dateTime</i>) (Refer to 4.12.1 Comments) →estimatedDeliveryPeriod (<i>TimeOrDateTimePeriod</i>)

4.12.4 Earliest Delivery Date

<i>AS5023 Reference</i>	<i>Section:</i>	<i>Group:</i>	<i>Element:</i>
<i>Description/Comments</i>	Related to Despatch and Delivery Dates		
<i>GS1 XML Path</i>	(Relative to either despatchInformation→estimatedDelivery or despatchInformation→actualShipping) →estimatedDeliveryPeriod→timePeriod→beginDate		
<i>Basic Type</i>	Attribute		
<i>Comments</i>			
<i>Schema Constraints</i>	<i>Mandatory:</i> No		
	<i>Data Type:</i> date		
	<i>Cardinality:</i> 1..1		
	The <i>timePeriod</i> and <i>dateTimePeriod</i> elements cannot both be used together. They are a choice group.		
<i>Co-requisites</i>	(Relative to either despatchInformation→estimatedDelivery or despatchInformation→actualShipping) →estimatedDeliveryPeriod→timePeriod→endDate		

<i>Optional Elements</i>	None
--------------------------	------

4.12.5 Latest Delivery Date

<i>AS5023 Reference</i>	<i>Section:</i>	<i>Group:</i>	<i>Element:</i>
<i>Description/Comments</i>	Related to Despatch and Delivery Dates		
<i>GS1 XML Path</i>	(Relative to either despatchInformation→estimatedDelivery or despatchInformation→actualShipping) →estimatedDeliveryPeriod→timePeriod→endDate		
<i>Basic Type</i>	Attribute		
<i>Comments</i>			
<i>Schema Constraints</i>	<i>Mandatory:</i> No		
	<i>Data Type:</i> date		
	<i>Cardinality:</i> 1..1		
	The <i>timePeriod</i> and <i>dateTimePeriod</i> elements cannot both be used together. They are a choice group.		
<i>Co-requisites</i>	(Relative to either despatchInformation→estimatedDelivery or despatchInformation→actualShipping) →estimatedDeliveryPeriod→timePeriod→beginDate		
<i>Optional Elements</i>	None		

4.12.6 Earliest Delivery Date/Time

<i>AS5023 Reference</i>	<i>Section:</i>	<i>Group:</i>	<i>Element:</i>
<i>Description/Comments</i>	Related to Despatch and Delivery Dates		
<i>GS1 XML Path</i>	(Relative to either despatchInformation→estimatedDelivery or despatchInformation→actualShipping) →estimatedDeliveryPeriod→dateTimePeriod→beginDateTime		
<i>Basic Type</i>	Attribute		

<i>Comments</i>	
<i>Schema Constraints</i>	<i>Mandatory:</i> No
	<i>Data Type:</i> dateTime
	<i>Cardinality:</i> 1..1
	The <i>timePeriod</i> and <i>dateTimePeriod</i> elements cannot both be used together. They are a choice group.
<i>Co-requisites</i>	(Relative to either despatchInformation→estimatedDelivery or despatchInformation→actualShipping) →estimatedDeliveryPeriod→dateTimePeriod→endDateTime
<i>Optional Elements</i>	None

4.12.7 Latest Delivery Date/Time

<i>AS5023 Reference</i>	<i>Section:</i>	<i>Group:</i>	<i>Element:</i>
<i>Description/Comments</i>	Related to Despatch and Delivery Dates		
<i>GS1 XML Path</i>	(Relative to either despatchInformation→estimatedDelivery or despatchInformation→actualShipping) →estimatedDeliveryPeriod→dateTimePeriod→endDateTime		
<i>Basic Type</i>	Attribute		
<i>Comments</i>			
<i>Schema Constraints</i>	<i>Mandatory:</i> No		
	<i>Data Type:</i> dateTime		
	<i>Cardinality:</i> 1..1		
	The <i>timePeriod</i> and <i>dateTimePeriod</i> elements cannot both be used together. They are a choice group.		
<i>Co-requisites</i>	(Relative to either despatchInformation→estimatedDelivery or despatchInformation→actualShipping) →estimatedDeliveryPeriod→dateTimePeriod→beginDateTime		
<i>Optional Elements</i>	None		

4.13 Equipment Details

<i>AS5023 Reference</i>	<i>Section:</i> Header	<i>Group:</i> Delivery and despatch	<i>Element:</i> Equipment details
<i>Description/Comments</i>	Container numbers, truck identifiers		
<i>GS1 XML Path</i>	deliveryAndTransportInformation		
<i>Basic Type</i>	Complex Element		
<i>Comments</i>	<p>AS5023 does not provide details on specific equipment details. deliveryAndTransportInformation is a complex element that provides a number of such elements. Details of individual elements follow.</p> <p>Note also the <i>serialShippingContainerCode</i> element which is linked to the AS5023 data element <i>Package identification</i>.</p>		
<i>Schema Constraints</i>	<i>Mandatory:</i> No		
	<i>Data Type:</i>		
	<i>Cardinality:</i> 0..1		
<i>Co-requisites</i>	Refer to individual elements		
<i>Optional Elements</i>	Refer to individual elements		

4.13.1 Truck Identifier

<i>AS5023 Reference</i>	<i>Section:</i> Header	<i>Group:</i> Delivery and despatch	<i>Element:</i> Equipment details
<i>Description/Comments</i>	Refer to Equipment Details		
<i>GS1 XML Path</i>	deliveryAndTransportInformation→licensePlate		
<i>Basic Type</i>	Element		
<i>Comments</i>	There are no formatting constraints applied to this element.		
<i>Schema Constraints</i>	<i>Mandatory:</i> No		
	<i>Data Type:</i> string		
	<i>Cardinality:</i> 0..1		

<i>Co-requisites</i>	None
<i>Optional Elements</i>	deliveryAndTransportInformation→deliveryOrTransportTerms (INCOTERMS code) deliveryAndTransportInformation→modeOfTransport (<i>list</i>) deliveryAndTransportInformation→billOfLadingNumber→referenceDateTime (<i>dateTime</i>) deliveryAndTransportInformation→billOfLadingNumber→referenceIdentification (<i>string</i>) deliveryAndTransportInformation→additionalDeliveryOrTransportTerms (<i>string</i>)

4.13.2 Transport Mode

<i>AS5023 Reference</i>	<i>Section:</i> Header	<i>Group:</i> Delivery and despatch	<i>Element:</i> Equipment details
<i>Description/Comments</i>	Refer to Equipment Details		
<i>GS1 XML Path</i>	deliveryAndTransportInformation→modeOfTransport		
<i>Basic Type</i>	Element		
<i>Comments</i>			
<i>Schema Constraints</i>	<i>Mandatory:</i> No		
	<i>Data Type:</i> List		
	<i>Cardinality:</i> 0..1		

	Allowable values are: AIR AIR_CHARTER AIR_EXPRESS AIR_FREIGHT BEST_WAY_SHIPPERS_OPTION BOOK_POSTAL BUS CAB CONSOLIDATION CONTRACT_CARRIER CUSTOMER_PICKUP CUSTOMER_PICKUP_OR_CUSTOMERS_EXPENSE EXPEDITED_TRUCK GEOGRAPHIC_RECEIVING	GEOGRAPHIC_RECEIVING_SHIPPING GEOGRAPHIC_SHIPPING INLAND_WATERWAY INTERMODAL_PIGGYBACK LESS_THAN_TRUCK_LOAD MOTOR MOTOR_COMMON_CARRIER MOTOR_FLATBED MOTOR_PACKAGE_CARRIER MOTOR_TRUCKLOAD MOTOR_VAN MUTUALLY_DEFINED OCEAN PARCEL_POST PIPELINE	POOL_TO_POOL POOLED_AIR POOLED_PIGGBYPACK POOLED_RAIL POOLED_TRUCK PRIVATE_CARRIER PRIVATE_PARCEL_SERVICE PRIVATE_VESSEL RAIL ROADRAILER SEA_AIR STEAM_SHIP SUPPLIER_TRUCK
<i>Co-requisites</i>	None		
<i>Optional Elements</i>	deliveryAndTransportInformation→deliveryOrTransportTerms (<i>INCOTERMS code</i>) deliveryAndTransportInformation→licensePlate (<i>string</i>) deliveryAndTransportInformation→billOfLadingNumber→referenceDateTime (<i>dateTime</i>) deliveryAndTransportInformation→billOfLadingNumber→referenceIdentification (<i>string</i>) deliveryAndTransportInformation→additionalDeliveryOrTransportTerms (<i>string</i>)		

4.13.3 Bill of Lading

<i>AS5023 Reference</i>	<i>Section:</i> Header	<i>Group:</i> Delivery and despatch	<i>Element:</i> Equipment details
<i>Description/Comments</i>	Refer to Equipment Details		
<i>GS1 XML Path</i>	deliveryAndTransportInformation→billOfLadingNumber→referenceIdentification		
<i>Basic Type</i>	Element		
<i>Comments</i>			
<i>Schema Constraints</i>	Mandatory: No		
	Data Type: string		

	Cardinality: 1..1
Co-requisites	deliveryAndTransportInformation→billOfLadingNumber→dateTime (dateTime)
Optional Elements	deliveryAndTransportInformation→deliveryOrTransportTerms (INCOTERMS code) deliveryAndTransportInformation→licensePlate (string) deliveryAndTransportInformation→modeOfTransport (list) deliveryAndTransportInformation→additionalDeliveryOrTransportTerms (string) deliveryNote→referenceIdentification (string) deliveryNote→referenceDateTime (dateTime) consignmentInformation→consignmentIdentification→referenceIdentification (string) consignmentInformation→packageInformation→numberOfUnits (integer)

4.13.4 Bill of Lading Date

AS5023 Reference	Section:	Group:	Element:
Description/Comments	Refer to Equipment Details		
GS1 XML Path	deliveryAndTransportInformation→billOfLadingNumber→referenceDateTime		
Basic Type	Element		
Comments			
Schema Constraints	Mandatory: No		
	Data Type: dateTime		
	Cardinality: 1..1		
Co-requisites	deliveryAndTransportInformation→billOfLadingNumber→referenceIdentification (string)		

Optional Elements	deliveryAndTransportInformation→deliveryOrTransportTerms (<i>INCOTERMS code</i>) deliveryAndTransportInformation→licensePlate (<i>string</i>) deliveryAndTransportInformation→modeOfTransport (<i>list</i>) deliveryAndTransportInformation→additionalDeliveryOrTransportTerms (<i>string</i>) deliveryNote→referenceIdentification (<i>string</i>) deliveryNote→referenceDateTime (<i>dateTime</i>) consignmentInformation→consignmentIdentification→referenceIdentification (<i>string</i>) consignmentInformation→packageInformation→numberOfUnits (<i>integer</i>)
--------------------------	---

4.13.5 Number of Packages

AS5023 Reference	<i>Section:</i>	<i>Group:</i>	<i>Element:</i>
Description/Comments	Related to Delivery and Despatch		
GS1 XML Path	consignmentInformation→packageInformation→numberOfUnits		
Basic Type	Element		
Comments	This element is the total number of packages in the shipment. Refer to 4.20 Number of Packages for the number of packages contained within a larger package.		
Schema Constraints	<i>Mandatory:</i> No		
	<i>Data Type:</i> integer		
	<i>Cardinality:</i> 1..1		
	Allowable values for <i>packageTypeDescriptionCodeValue</i> are defined in the EANCOM element 7065. Details of this code list can be downloaded from: http://www.gefeg.com/service/eancom2003/ean2003s3/experts/part3/dc8m.htm		
Co-requisites	None		

<i>Optional Elements</i>	consignmentInformation→packageInformation→packageType→packageTypeDescriptionCodeValue (<i>list</i>) deliveryAndTransportInformation→billOfLadingNumber→referenceIdentification (<i>string</i>) deliveryAndTransportInformation→deliveryOrTransportTerms (<i>INCOTERMS code</i>) deliveryAndTransportInformation→licensePlate (<i>string</i>) deliveryAndTransportInformation→modeOfTransport (<i>list</i>) deliveryAndTransportInformation→additionalDeliveryOrTransportTerms (<i>string</i>) deliveryNote→referenceIdentification (<i>string</i>) deliveryNote→referenceDateTime (<i>dateTime</i>) consignmentInformation→consignmentIdentification→referenceIdentification (<i>string</i>) consignmentInformation→consignmentIdentification→referenceDateTime (<i>dateTime</i>)
--------------------------	--

4.13.6 Package Types

<i>AS5023 Reference</i>	<i>Section:</i>	<i>Group:</i>	<i>Element:</i>
<i>Description/Comments</i>	Related to Despatch and Delivery		
<i>GS1 XML Path</i>	consignmentInformation→packageInformation→packageType→packageTypeDescriptionCodeValue		
<i>Basic Type</i>	Element		
<i>Comments</i>			
<i>Schema Constraints</i>	<i>Mandatory:</i> No		
	<i>Data Type:</i> list (Definitions in EANCOM element 7065)		
	<i>Cardinality:</i> 0..1		
	Allowable values for <i>packageTypeDescriptionCodeValue</i> are defined in the EANCOM element 7065. Details of this code list can be downloaded from: http://www.gefeg.com/service/eancom2003/ean2003s3/experts/part3/dc8m.htm		
<i>Co-requisites</i>	consignmentInformation→packageInformation→numberOfUnits (<i>integer</i>)		

<i>Optional Elements</i>	deliveryAndTransportInformation→billOfLadingNumber→referenceIdentification (string) deliveryAndTransportInformation→deliveryOrTransportTerms (INCOTERMS code) deliveryAndTransportInformation→licensePlate (string) deliveryAndTransportInformation→modeOfTransport (list) deliveryAndTransportInformation→additionalDeliveryOrTransportTerms (string) deliveryNote→referenceIdentification (string) deliveryNote→referenceDateTime (dateTime) consignmentInformation→consignmentIdentification→referenceIdentification (string) consignmentInformation→consignmentIdentification→referenceDateTime (dateTime)
--------------------------	--

4.14 Additional Information

<i>AS5023 Reference</i>	Section: Header	Group: Delivery and Despatch	Element: Additional delivery information
<i>Description/Comments</i>			
<i>GS1 XML Path</i>	deliveryAndTransportInformation→deliveryOrTransportTerms		
<i>Basic Type</i>	Element		
<i>Comments</i>			
<i>Schema Constraints</i>	Mandatory: No		
	Data Type: List		
	Cardinality:		
	Allowable values are:	DAF DDP DDU DEQ DES	EXW FAS FCA FOB
<i>Co-requisites</i>	None		

<i>Optional Elements</i>	deliveryAndTransportInformation→licensePlate (<i>string</i>) deliveryAndTransportInformation→modeOfTransport (<i>list</i>) deliveryAndTransportInformation→billOfLadingNumber→referenceDateTime (<i>dateTime</i>) deliveryAndTransportInformation→billOfLadingNumber→referenceIdentification (<i>string</i>) deliveryAndTransportInformation→additionalDeliveryOrTransportTerms (<i>string</i>)
--------------------------	---

4.15 Buyer

<i>AS5023 Reference</i>	<i>Section:</i> Header	<i>Group:</i> Party Identification	<i>Element:</i> Buyer
<i>Description/Comments</i>			
<i>GS1 XML Path</i>	receiver→gln		
<i>Basic Type</i>	Element		
<i>Comments</i>			
<i>Schema Constraints</i>	<i>Mandatory:</i> Yes		
	<i>Data Type:</i> Global Location Number		
	<i>Cardinality:</i> 1..1		
<i>Co-requisites</i>	shipper→gln (<i>Global Location Number</i>) shipTo→ gln (<i>Global Location Number</i>)		
<i>Optional Elements</i>	receiver→additionalPartyIdentification→additionalPartyIdentificationValue (<i>string</i>) receiver→additionalPartyIdentification→additionalPartyIdentificationType (<i>List</i>)		

4.16 Supplier

<i>AS5023 Reference</i>	<i>Section:</i> Header	<i>Group:</i> Party Identification	<i>Element:</i> Supplier
<i>Description/Comments</i>			
<i>GS1 XML Path</i>	shipper→gln		

<i>Basic Type</i>	Element
<i>Comments</i>	The Supplier should also be the document owner in the <i>despatchAdviceIdentification</i> element.
<i>Schema Constraints</i>	<i>Mandatory:</i> Yes
	<i>Data Type:</i> Global Location Number
	<i>Cardinality:</i> 1..1
	despatchAdviceIdentification→contentOwner→gln must have the same value.
<i>Co-requisites</i>	shipTo→gln (<i>Global Location Number</i>) receiver→gln (<i>Global Location Number</i>) despatchAdviceIdentification→contentOwner→gln (<i>Global Location Number</i>) despatchAdviceIdentification→uniqueCreatorIdentification (<i>string</i>)
<i>Optional Elements</i>	shipper→additionalPartyIdentification→additionalPartyIdentificationValue (<i>string</i>) shipper→additionalPartyIdentification→additionalPartyIdentificationType (<i>List</i>)

4.17 Ship To Location

<i>AS5023 Reference</i>	<i>Section:</i> Header	<i>Group:</i> Party Identification	<i>Element:</i> Ship to location
<i>Description/Comments</i>			
<i>GS1 XML Path</i>	shipTo→gln		
<i>Basic Type</i>	Element		
<i>Comments</i>			
<i>Schema Constraints</i>	<i>Mandatory:</i> Yes		
	<i>Data Type:</i> Global Location Number		
	<i>Cardinality:</i> 1..1		
<i>Co-requisites</i>	receiver→gln (<i>Global Location Number</i>) shipper→gln (<i>Global Location Number</i>)		

<i>Optional Elements</i>	shipTo →additionalPartyIdentification→additionalPartyIdentificationValue (<i>string</i>) shipTo →additionalPartyIdentification→additionalPartyIdentificationType (<i>List</i>)
--------------------------	---

4.18 Packaging Level

<i>AS5023 Reference</i>	<i>Section:</i> Detail	<i>Group:</i> Packaging	<i>Element:</i> Packaging level
<i>Description/Comments</i>	Entire shipment, outer, intermediate, or inner		
<i>GS1 XML Path</i>	despatchAdviceLogisticsUnitLineItem→levelId→levelIdentification		
<i>Basic Type</i>	Element		
<i>Comments</i>	See also 4.18.1 Parent Packaging Level.		
<i>Schema Constraints</i>	<i>Mandatory:</i> No		
	<i>Data Type:</i> Integer		
	<i>Cardinality:</i> 1..1		
<i>Co-requisites</i>	despatchAdviceLogisticsUnitLineItem→logisticUnitIdentification→serialShipmentContainerCode→ serialShippingContainerCode		
<i>Optional Elements</i>	(Relative to despatchAdviceLogisticsUnitLineItem) →quantityOfChildren (<i>integer</i>) →packageType→packageTypeDescriptionCodeValue (<i>string</i>) →childPackageType→packageTypeDescriptionCodeValue (<i>string</i>) →logisticUnitMeasurement (<i>LogisticUnitMeasurementType</i>) →parentLevelId→levelIdentification (<i>integer</i>) →despatchAdviceItemContainmentLineItem (<i>DespatchAdviceItemContainmentLineItemType</i>)		

4.18.1 Parent Packaging Level

<i>AS5023 Reference</i>	<i>Section:</i>	<i>Group:</i>	<i>Element:</i>
<i>Description/Comments</i>	Related to Packaging Level		

<i>GS1 XML Path</i>	despatchAdviceLogisticsUnitLineItem→parentLevelId→levelIdentification
<i>Basic Type</i>	Element
<i>Comments</i>	See also Packaging Level 4.18 Packaging Level. Specifying the link to the Parent Package ID allows flexibility in the definition of the IDs.
<i>Schema Constraints</i>	<i>Mandatory:</i> No
	<i>Data Type:</i> Integer
	<i>Cardinality:</i> 1..1
<i>Co-requisites</i>	despatchAdviceLogisticsUnitLineItem→logisticUnitIdentification→serialShipmentContainerCode→ serialShippingContainerCode
<i>Optional Elements</i>	(Relative to despatchAdviceLogisticsUnitLineItem) →quantityOfChildren (<i>integer</i>) →packageType→packageTypeDescriptionCodeValue (<i>string</i>) →childPackageType→packageTypeDescriptionCodeValue (<i>string</i>) →logisticUnitMeasurement (<i>LogisticUnitMeasurementType</i>) →levelId→levelIdentification (<i>integer</i>) →despatchAdviceItemContainmentLineItem (<i>DespatchAdviceItemContainmentLineItemType</i>)

4.19 Packaging Type

<i>AS5023 Reference</i>	<i>Section:</i> Detail	<i>Group:</i> Packaging	<i>Element:</i> Packaging
<i>Description/Comments</i>			
<i>GS1 XML Path</i>	despatchAdviceLogisticsUnitLineItem→packageType→packageTypeDescriptionCodeValue		
<i>Basic Type</i>	Element		
<i>Comments</i>			
<i>Schema Constraints</i>	<i>Mandatory:</i> No		
	<i>Data Type:</i> list		
	<i>Cardinality:</i> 1..1		

	For the elements of this list, refer to the EANCOM element 7065 which contains a codelist based on UN/ECE Recommendation No. 21. It is available on the web at: http://www.gefeg.com/service/eancom2003/ean2003s3/experts/part3/dc8m.htm
<i>Co-requisites</i>	(Relative to despatchAdviceLogisticsUnitLineItem) logisticUnitIdentification→serialShipmentContainerCode→serialShipmentContainerCode→serialShippingContainerCode (<i>string</i>)
<i>Optional Elements</i>	(Relative to despatchAdviceLogisticsUnitLineItem) →quantityOfChildren (<i>integer</i>) →childPackageType→packageTypeDescriptionCodeValue (<i>string</i>) →logisticUnitMeasurement (<i>LogisticUnitMeasurementType</i>) →levelId→levelIdentification (<i>integer</i>) →parentLevelId→levelIdentification (<i>integer</i>) →despatchAdviceItemContainmentLineItem (<i>DespatchAdviceItemContainmentLineItemType</i>)

4.19.1 Child Package Type

<i>AS5023 Reference</i>	<i>Section:</i>	<i>Group:</i>	<i>Element:</i>
<i>Description/Comments</i>	Related to Packaging		
<i>GS1 XML Path</i>	despatchAdviceLogisticsUnitLineItem→packageType→childpackageTypeDescriptionCodeValue		
<i>Basic Type</i>	Element		
<i>Comments</i>			
<i>Schema Constraints</i>	<i>Mandatory:</i> No		
	<i>Data Type:</i> list		
	<i>Cardinality:</i> 1..1		
	For the elements of this list, refer to the EANCOM element 7065 which contains a codelist based on UN/ECE Recommendation No. 21. It is available on the web at: http://www.gefeg.com/service/eancom2003/ean2003s3/experts/part3/dc8m.htm		
<i>Co-requisites</i>	(Relative to despatchAdviceLogisticsUnitLineItem) logisticUnitIdentification→serialShipmentContainerCode→serialShipmentContainerCode→serialShippingContainerCode (<i>string</i>)		

Optional Elements	(Relative to despatchAdviceLogisticsUnitLineItem) →quantityOfChildren (<i>integer</i>) →PackageType→packageTypeDescriptionCodeValue (<i>string</i>) →logisticUnitMeasurement (<i>LogisticUnitMeasurementType</i>) →levelId→levelIdentification (<i>integer</i>) →parentLevelId→levelIdentification (<i>integer</i>) →despatchAdviceItemContainmentLineItem (<i>DespatchAdviceItemContainmentLineItemType</i>)
--------------------------	---

4.20 Number of Packages

AS5023 Reference	Section: Detail	Group: Packaging	Element: Packaging
Description/Comments			
GS1 XML Path	despatchAdviceLogisticsUnitLineItem→quantityOfChildren		
Basic Type	Element		
Comments	This element is the number of packages within the package being described. Refer to 4.13.5 Number of Packages for the total number of packages in the shipment.		
Schema Constraints	Mandatory: No		
	Data Type: integer		
	Cardinality: 0..1		
Co-requisites	(Relative to despatchAdviceLogisticsUnitLineItem) logisticUnitIdentification→serialShipmentContainerCode→serialShipmentContainerCode→serialShippingContainerCode (<i>string</i>)		
Optional Elements	(Relative to despatchAdviceLogisticsUnitLineItem) → packageType→packageTypeDescriptionCodeValue (<i>list</i>) →childPackageType→packageTypeDescriptionCodeValue (<i>string</i>) →logisticUnitMeasurement (<i>LogisticUnitMeasurementType</i>) →levelId→levelIdentification (<i>integer</i>) →parentLevelId→levelIdentification (<i>integer</i>) →despatchAdviceItemContainmentLineItem (<i>DespatchAdviceItemContainmentLineItemType</i>)		

4.21 Package Measurements

<i>AS5023 Reference</i>	<i>Section:</i> Detail	<i>Group:</i> Packaging	<i>Element:</i> Measurements
<i>Description/Comments</i>			
<i>GS1 XML Path</i>	despatchAdviceLogisticsUnitLineItem→logisticUnitMeasurement		
<i>Basic Type</i>	Complex Type		
<i>Comments</i>	This is a complex type which can record the lineal dimensions of the package as well as weight and volume measurements.		
<i>Schema Constraints</i>	<i>Mandatory:</i> No		
	<i>Data Type:</i> logisticUnitMeasurementType		
	<i>Cardinality:</i> 0..1		
<i>Co-requisites</i>	(Relative to despatchAdviceLogisticsUnitLineItem) logisticUnitIdentification→serialShipmentContainerCode→serialShipmentContainerCode→serialShippingContainerCode (<i>string</i>)		
<i>Optional Elements</i>	(Relative to despatchAdviceLogisticsUnitLineItem) →quantityOfChildren (<i>integer</i>) →packageType→packageTypeDescriptionCodeValue (<i>list</i>) →childPackageType→packageTypeDescriptionCodeValue (<i>string</i>) →levelId→levelIdentification (<i>integer</i>) →parentLevelId→levelIdentification (<i>integer</i>) →despatchAdviceItemContainmentLineItem (<i>DespatchAdviceItemContainmentLineItemType</i>)		

4.21.1 Package Lineal Dimensions

<i>AS5023 Reference</i>	<i>Section:</i> Detail	<i>Group:</i> Packaging	<i>Element:</i> Measurements
<i>Description/Comments</i>			

<i>GS1 XML Path</i>	(Relative to despatchAdviceLogisticsUnitLineItem→logisticUnitMeasurement→packageDimension) →packageLength→measurementValue→value →packageHeight→measurementValue→value →packageWidth→measurementValue→value
<i>Basic Type</i>	Element
<i>Comments</i>	All three elements behave in the same way, so they are treated as one in this document. The difference is only in their naming.
<i>Schema Constraints</i>	<i>Mandatory:</i> No
	<i>Data Type:</i> decimal
	<i>Cardinality:</i> 1..1
<i>Co-requisites</i>	(Relative to despatchAdviceLogisticsUnitLineItem→logisticUnitMeasurement→packageDimension) →packageLength→measurementValue→unitOfMeasure (<i>Attribute, string</i>) →packageHeight→measurementValue→unitOfMeasure (<i>Attribute, string</i>) →packageWidth→measurementValue→unitOfMeasure (<i>Attribute, string</i>)
<i>Optional Elements</i>	despatchAdviceLogisticsUnitLineItem→logisticUnitMeasurement→unitMeasurement (<i>UnitMeasurementType</i>)

4.21.2 Package: Other Measurements

<i>AS5023 Reference</i>	<i>Section:</i> Detail	<i>Group:</i> Packaging	<i>Element:</i> Measurements
<i>Description/Comments</i>			
<i>GS1 XML Path</i>	despatchAdviceLogisticUnitLineItem→logisticUnitMeasurement→unitMeasurement→measurementValue→value		
<i>Basic Type</i>	Element		
<i>Comments</i>			
<i>Schema Constraints</i>	<i>Mandatory:</i> No		
	<i>Data Type:</i> decimal		
	<i>Cardinality:</i> 1..1		

	Allowable values for <i>measurementType</i> are: DECLARED_NET_WEIGHT	GROSS_VOLUME NET_VOLUME TARE_WEIGHT	TOTAL_GROSS_WEIGHT UNIT_GROSS_WEIGHT UNIT_NET_WEIGHT
<i>Co-requisites</i>	(Relative to despatchAdviceLogisticsUnitLineItem→logisticUnitMeasurement→unitMeasurement) →measurementValue→ unitOfMeasure (<i>string</i>) →measurementType (<i>list</i>)		
<i>Optional Elements</i>	None		

4.21.3 Package: Measurement Type

<i>AS5023 Reference</i>	<i>Section:</i>	<i>Group:</i>	<i>Element:</i>
<i>Description/Comments</i>	Related to Packaging Measurements		
<i>GS1 XML Path</i>	despatchAdviceLogisticUnitLineItem→logisticUnitMeasurement→unitMeasurement→measurementType		
<i>Basic Type</i>	Element		
<i>Comments</i>			
<i>Schema Constraints</i>	<i>Mandatory:</i> No		
	<i>Data Type:</i> list		
	<i>Cardinality:</i> 1..1		
	Allowable values for are: DECLARED_NET_WEIGHT	GROSS_VOLUME NET_VOLUME TARE_WEIGHT	TOTAL_GROSS_WEIGHT UNIT_GROSS_WEIGHT UNIT_NET_WEIGHT
<i>Co-requisites</i>	(Relative to despatchAdviceLogisticsUnitLineItem→logisticUnitMeasurement→unitMeasurement) →measurementValue→ unitOfMeasure (<i>string</i>) → measurementValue→value (<i>decimal</i>)		
<i>Optional Elements</i>	None		

4.21.4 Package: Unit of Measure

<i>AS5023 Reference</i>	<i>Section:</i>	<i>Group:</i>	<i>Element:</i>
<i>Description/Comments</i>	Related to Packaging Measurements		
<i>GS1 XML Path</i>	despatchAdviceLogisticUnitLineItem→logisticUnitMeasurement→unitMeasurement→measurementValue→unitOfMeasure		
<i>Basic Type</i>	Attribute		
<i>Comments</i>			
<i>Schema Constraints</i>	<i>Mandatory:</i> No		
	<i>Data Type:</i> string		
	<i>Cardinality:</i> 1..1		
	Allowable values for <i>unitOfMeasure</i> are defined in the EANCOM element 6411. Details of this code list can be downloaded from: http://www.gefeg.com/service/eancom2003/ean2003s3/experts/part3/dc8b.htm		
<i>Co-requisites</i>	(Relative to despatchAdviceLogisticsUnitLineItem→logisticUnitMeasurement→unitMeasurement) →measurementValue→ value (<i>decimal</i>) →measurementType (<i>list</i>)		
<i>Optional Elements</i>	None		

4.22 Quantity per Package

<i>AS5023 Reference</i>	<i>Section:</i> Detail	<i>Group:</i> Packaging	<i>Element:</i> Quantity per package
<i>Description/Comments</i>			
<i>GS1 XML Path</i>	despatchAdviceLogisticUnitLineItem→despatchAdviceItemContainmentLineItem→quantityContained→value		
<i>Basic Type</i>	Element		

<i>Comments</i>	<p>If multiple batches are contained within the package, then use one <code>despatchAdviceItemContainmentLineItem</code> element per batch.</p> <p>Because <i>despatchAdviceLogisticsUnitLineItem</i> and <i>despatchAdviceItemContainmentLineItem</i> are members of the same choice group, the message cannot contain <u>both</u> the total quantity of an item per despatch and the quantity of an item contained within a package. If the quantity per package option is used, then the total quantity for the despatch can be derived by summing the quantity per package values for the despatch.</p>
<i>Schema Constraints</i>	Mandatory: No
	Data Type: float
	Cardinality: 1..1
	This element is mandatory if <i>despatchAdviceLogisticUnitLineItem</i> is used.
<i>Co-requisites</i>	<p>(Relative to <code>despatchAdviceLogisticsUnitLineItem</code>→<code>despatchAdviceItemContainmentLineItem</code>)</p> <p>→<code>quantityContained</code>→<code>unitOfMeasure</code>→<code>measurementUnitCodeValue</code> (<i>string</i>)</p> <p>→<code>number</code> (<i>nonNegativeInteger</i>)</p> <p>→<code>containedItemIdentification</code>→<code>gtin</code> (<i>Global Trade Item Number</i>¹)</p>

1.1 ¹ This must be padded with 0's to the full 14 characters. See section 1.3 Global Trade Item Numbers - GTINs

Global Trade Item Numbers are used extensively to identify items. This field MUST contain a 14 digit number, so a 'filler 0' must be added to the front of the number if they are 8, 12, or 13 digit GTINs. For example, 9312345678901 becomes 09312345678901. This does not change the number at all, it is simply a non-significant digit added so this will pass schema validation.

Optional Elements	(Relative to despatchAdviceLogisticsUnitLineItem→despatchAdviceItemContainmentLineItem) →requestedItemIdentification→gtin (<i>Global Trade Item Number²</i>) →productCertification (<i>DetailLevelReferenceType</i>) →promotionalDeal (<i>DetailLevelReferenceType</i>) →customer (<i>DetailLevelReferenceType</i>) →specification (<i>DetailLevelReferenceType</i>) →deliveryNote (<i>DetailLevelReferenceType</i>) →consignment (<i>DetailLevelReferenceType</i>) →contract (<i>DetailLevelReferenceType</i>) →purchaseOrder (<i>DocumentOrDocumentLineReferenceType</i>) →purchaseConditions (<i>DocumentOrDocumentLineReferenceType</i>) →listForEachItem (<i>SpecifItemDataType</i>) →extendedAttributes (<i>TransactionalItemDataType</i>) →requestedQuantity (<i>QuantityType</i>) →freeGoodsQuantity (<i>QuantityType</i>) →quantityVariance (<i>QuantityVarianceType</i>) →countryOfLastProcessing (<i>ISO3166_1CodeType</i>) →countryOfOrigin (<i>ISO3166_1CodeType</i>) →locationOfLastProcessing (<i>LocationInformationType</i>) →locationOfOrigin (<i>LocationInformationType</i>)
-------------------	--

1.2 ² This must be padded with 0's to the full 14 characters. See section 1.3 Global Trade Item Numbers - GTINs

Global Trade Item Numbers are used extensively to identify items. This field MUST contain a 14 digit number, so a 'filler 0' must be added to the front of the number if they are 8, 12, or 13 digit GTINs. For example, 9312345678901 becomes 09312345678901. This does not change the number at all, it is simply a non-significant digit added so this will pass schema validation.

4.23 Package Identification

<i>AS5023 Reference</i>	<i>Section: Detail</i>	<i>Group: Packaging</i>	<i>Element: Package Identification</i>
<i>Description/Comments</i>			
<i>GS1 XML Path</i>	despatchAdviceLogisticUnitLineItem→logisticUnitIdentification→serialShipmentContainerCode→serialShippingContainerCode		
<i>Basic Type</i>	Element		
<i>Comments</i>			
<i>Schema Constraints</i>	<i>Mandatory:</i> No		
	<i>Data Type:</i> string		
	<i>Cardinality:</i> 1..1		
	Mandatory if despatchAdviceLogisticUnitLineItem is used.		
<i>Co-requisites</i>	None		
<i>Optional Elements</i>	(Relative to despatchAdviceLogisticsUnitLineItem→logisticUnitIdentification) →additionalLogisticUnitIdentification→logisticUnitIdentification (<i>string</i>)		

4.24 Line Number

<i>AS5023 Reference</i>	<i>Section: Detail</i>	<i>Group: Line Item</i>	<i>Element: Line number</i>
<i>Description/Comments</i>			
<i>GS1 XML Path</i>	despatchAdviceItemContainmentLineItem→number		
<i>Basic Type</i>	Attribute		
<i>Comments</i>	Line numbers are used if the Despatch Advice is written from the item perspective i.e. using the <i>despatchAdviceItemContainmentLineItem</i> element. It may also be written from the items within a package perspective which shows the hierarchical relationship between all the packages in the shipment i.e. using the <i>despatchAdviceLogisticUnitLineItem</i> element containing the <i>despatchAdviceItemContainmentLineItem</i> element. In this case the line numbers refer to the individual items within the package.		
<i>Schema Constraints</i>	<i>Mandatory:</i> No		
	<i>Data Type:</i> Non-negative Integer		

	Cardinality: 1..1
	This is mandatory if <i>despatchAdviceItemContainmentLineItem</i> is used.
Co-requisites	(Relative to <i>despatchAdviceLogisticsUnitLineItem</i> → <i>despatchAdviceItemContainmentLineItem</i>) →containedItemIdentification→gtin (<i>Global Trade Item Number</i> ³) →quantityContained→unitOfMeasure→measurementUnitCodeValue (<i>string</i>) →quantityContained→value (<i>float</i>)

1.3 ³ This must be padded with 0's to the full 14 characters. See section 1.3 Global Trade Item Numbers - GTINs

Global Trade Item Numbers are used extensively to identify items. This field MUST contain a 14 digit number, so a 'filler 0' must be added to the front of the number if they are 8, 12, or 13 digit GTINs. For example, 9312345678901 becomes 09312345678901. This does not change the number at all, it is simply a non-significant digit added so this will pass schema validation.

Optional Elements	<p>(Relative to despatchAdviceLogisticsUnitLineItem→despatchAdviceItemContainmentLineItem)</p> <ul style="list-style-type: none"> →requestedItemIdentification→gtin (<i>Global Trade Item Number⁴</i>) →productCertification (<i>DetailLevelReferenceType</i>) →promotionalDeal (<i>DetailLevelReferenceType</i>) →customer (<i>DetailLevelReferenceType</i>) →specification (<i>DetailLevelReferenceType</i>) →deliveryNote (<i>DetailLevelReferenceType</i>) →consignment (<i>DetailLevelReferenceType</i>) →contract (<i>DetailLevelReferenceType</i>) →purchaseOrder (<i>DocumentOrDocumentLineReferenceType</i>) →purchaseConditions (<i>DocumentOrDocumentLineReferenceType</i>) →listForEachItem (<i>SpecifItemDataType</i>) →extendedAttributes (<i>TransactionalItemDataType</i>) →requestedQuantity (<i>QuantityType</i>) →freeGoodsQuantity (<i>QuantityType</i>) →quantityVariance (<i>QuantityVarianceType</i>) →countryOfLastProcessing (<i>ISO3166_1CodeType</i>) →countryOfOrigin (<i>ISO3166_1CodeType</i>) →locationOfLastProcessing (<i>LocationInformationType</i>) →locationOfOrigin (<i>LocationInformationType</i>)
-------------------	--

1.4 ⁴ This must be padded with 0's to the full 14 characters. See section 1.3 Global Trade Item Numbers - GTINs

Global Trade Item Numbers are used extensively to identify items. This field MUST contain a 14 digit number, so a 'filler 0' must be added to the front of the number if they are 8, 12, or 13 digit GTINs. For example, 9312345678901 becomes 09312345678901. This does not change the number at all, it is simply a non-significant digit added so this will pass schema validation.

4.25 Unique Product Identifier

<i>AS5023 Reference</i>	<i>Section:</i> Detail	<i>Group:</i> Product Identifier	<i>Element:</i> Unique product identifier
<i>Description/Comments</i>			
<i>GS1 XML Path</i>	(Relative to despatchAdviceItemContainmentLineItem or despatchAdviceLogisticUnitLineItem→despatchAdviceItemContainmentLineItem) →containedItemIdentification→gtin		
<i>Basic Type</i>	Element		
<i>Comments</i>			
<i>Schema Constraints</i>	Mandatory: No		
	Data Type: Global Trade Item Number ⁵		
	Cardinality: 1..1		
	This is mandatory if <i>despatchAdviceItemContainmentLineItem</i> is used.		

1.5 ⁵ This must be padded with 0's to the full 14 characters. See section 1.3 Global Trade Item Numbers - GTINs

Global Trade Item Numbers are used extensively to identify items. This field MUST contain a 14 digit number, so a 'filler 0' must be added to the front of the number if they are 8, 12, or 13 digit GTINs. For example, 9312345678901 becomes 09312345678901. This does not change the number at all, it is simply a non-significant digit added so this will pass schema validation.

<i>Co-requisites</i>	<p>(Relative to despatchAdviceItemContainmentLineItem or despatchAdviceLogisticUnitLineItem→despatchAdviceItemContainmentLineItem)</p> <p>→number <i>(Non-negative Number)</i></p> <p>→quantityContained→unitOfMeasure→measurementUnitCodeValue <i>(string)</i></p> <p>→quantityContained→value <i>(float)</i></p>
----------------------	---

<i>Optional Elements</i>	(Relative to or despatchAdviceLogisticUnitLineItem→despatchAdviceItemContainmentLineItem) →requestedItemIdentification→gtin (<i>Global Trade Item Number</i> ⁶) →productCertification (<i>DetailLevelReferenceType</i>) →promotionalDeal (<i>DetailLevelReferenceType</i>) →customer (<i>DetailLevelReferenceType</i>) →specification (<i>DetailLevelReferenceType</i>) →deliveryNote (<i>DetailLevelReferenceType</i>) →consignment (<i>DetailLevelReferenceType</i>) →contract (<i>DetailLevelReferenceType</i>) →purchaseOrder (<i>DocumentOrDocumentLineReferenceType</i>) →purchaseConditions (<i>DocumentOrDocumentLineReferenceType</i>) →listForEachItem (<i>SpecifItemDataType</i>) →extendedAttributes (<i>TransactionalItemDataType</i>) →requestedQuantity (<i>QuantityType</i>) →freeGoodsQuantity (<i>QuantityType</i>) →quantityVariance (<i>QuantityVarianceType</i>) →countryOfLastProcessing (<i>ISO3166_1CodeType</i>) →countryOfOrigin (<i>ISO3166_1CodeType</i>) →locationOfLastProcessing (<i>LocationInformationType</i>) →locationOfOrigin (<i>LocationInformationType</i>)
--------------------------	---

1.6 ⁶ This must be padded with 0's to the full 14 characters. See section 1.3 Global Trade Item Numbers - GTINs

Global Trade Item Numbers are used extensively to identify items. This field MUST contain a 14 digit number, so a 'filler 0' must be added to the front of the number if they are 8, 12, or 13 digit GTINs. For example, 9312345678901 becomes 09312345678901. This does not change the number at all, it is simply a non-significant digit added so this will pass schema validation.

4.26 Requested Item Identifier

AS5023 Reference	Section:	Group:	Element:
Description/Comments	Related to Unique Product Identifier		
GS1 XML Path	(Relative to despatchAdviceItemContainmentLineItem or despatchAdviceLogisticUnitLineItem→despatchAdviceItemContainmentLineItem) →requestedItemIdentification→gtin		
Basic Type	Element		
Comments			
Schema Constraints	Mandatory: No		
	Data Type: Global Trade Item Number ⁷		
	Cardinality: 1..1		
	This item must be used if the item supplied is different to the one requested.		
Co-requisites	(Relative to despatchAdviceItemContainmentLineItem or despatchAdviceLogisticUnitLineItem→despatchAdviceItemContainmentLineItem) →number (Non-negative Number) →quantityContained→unitOfMeasure→measurementUnitCodeValue (string) →quantityContained→value (float) →containedItemIdentification→gtin (Global Trade Item Number ⁸)		

1.7 ⁷ This must be padded with 0's to the full 14 characters. See section 1.3 Global Trade Item Numbers - GTINs

Global Trade Item Numbers are used extensively to identify items. This field MUST contain a 14 digit number, so a 'filler 0' must be added to the front of the number if they are 8, 12, or 13 digit GTINs. For example, 9312345678901 becomes 09312345678901. This does not change the number at all, it is simply a non-significant digit added so this will pass schema validation.

<i>Optional Elements</i>	(Relative to or despatchAdviceLogisticUnitLineItem→despatchAdviceItemContainmentLineItem) →productCertification (<i>DetailLevelReferenceType</i>) →promotionalDeal (<i>DetailLevelReferenceType</i>) →customer (<i>DetailLevelReferenceType</i>) →specification (<i>DetailLevelReferenceType</i>) →deliveryNote (<i>DetailLevelReferenceType</i>) →consignment (<i>DetailLevelReferenceType</i>) →contract (<i>DetailLevelReferenceType</i>) →purchaseOrder (<i>DocumentOrDocumentLineReferenceType</i>) →purchaseConditions (<i>DocumentOrDocumentLineReferenceType</i>) →listForEachItem (<i>SpecifItemDataType</i>) →extendedAttributes (<i>TransactionalItemDataType</i>) →requestedQuantity (<i>QuantityType</i>) →freeGoodsQuantity (<i>QuantityType</i>) →quantityVariance (<i>QuantityVarianceType</i>) →countryOfLastProcessing (<i>ISO3166_1CodeType</i>) →countryOfOrigin (<i>ISO3166_1CodeType</i>) →locationOfLastProcessing (<i>LocationInformationType</i>) →locationOfOrigin (<i>LocationInformationType</i>)
--------------------------	---

1.8 ⁸ This must be padded with 0's to the full 14 characters. See section 1.3 Global Trade Item Numbers - GTINs

Global Trade Item Numbers are used extensively to identify items. This field MUST contain a 14 digit number, so a 'filler 0' must be added to the front of the number if they are 8, 12, or 13 digit GTINs. For example, 9312345678901 becomes 09312345678901. This does not change the number at all, it is simply a non-significant digit added so this will pass schema validation.

4.27 Additional Product Information

<i>AS5023 Reference</i>	<i>Section:</i> Detail	<i>Group:</i> Product Identifier	<i>Element:</i> Additional product information
<i>Description/Comments</i>			
<i>GS1 XML Path</i>	(Relative to despatchAdviceItemContainmentLineItem or despatchAdviceLogisticUnitLineItem→despatchAdviceItemContainmentLineItem) →containedItemIdentification→additionalTradeItemIdentification→ additionalTradeItemIdentificationValue		
<i>Basic Type</i>	Element		
<i>Comments</i>	Additional Product Information can be used to identify the product additionally with a Buyer Product Code or a Supplier product code or both;		
<i>Schema Constraints</i>	<i>Mandatory:</i> No		
	<i>Data Type:</i> string		
	<i>Cardinality:</i> 1..1		
<i>Co-requisites</i>	(Relative to despatchAdviceItemContainmentLineItem or despatchAdviceLogisticUnitLineItem→despatchAdviceItemContainmentLineItem) containedItemIdentification→additionalTradeItemIdentificationType		
<i>Optional Elements</i>	None		

4.28 Additional Product Information Type

<i>AS5023 Reference</i>	<i>Section:</i> Detail	<i>Group:</i> Product Identifier	<i>Element:</i> Additional product information
<i>Description/Comments</i>			
<i>GS1 XML Path</i>	(Relative to despatchAdviceItemContainmentLineItem or despatchAdviceLogisticUnitLineItem→despatchAdviceItemContainmentLineItem) →containedItemIdentification→additionalTradeItemIdentification→ additionalTradeItemIdentificationType		
<i>Basic Type</i>	Element		
<i>Comments</i>			
<i>Schema Constraints</i>	<i>Mandatory:</i> No		

	<i>Data Type:</i> list
	<i>Cardinality:</i> 1..1
	Allowable values are: BUYER_ASSIGNED INDUSTRY_ASSIGNED SUPPLIER_ASSIGNED
<i>Co-requisites</i>	(Relative to despatchAdviceItemContainmentLineItem or despatchAdviceLogisticUnitLineItem→despatchAdviceItemContainmentLineItem) containedItemIdentification→additionalTradeItemIdentificationValue
<i>Optional Elements</i>	None

4.29 Despatched Quantities

<i>AS5023 Reference</i>	<i>Section:</i> Detail	<i>Group:</i> Item Detail	<i>Element:</i> Quantities
<i>Description/Comments</i>			
<i>GS1 XML Path</i>	(Relative to despatchAdviceItemContainmentLineItem or despatchAdviceLogisticUnitLineItem→despatchAdviceItemContainmentLineItem) despatchAdviceItemContainmentLineItem→quantityContained→value		
<i>Basic Type</i>	Element		
<i>Comments</i>	Because <i>despatchAdviceLogisticsUnitLineItem</i> and <i>despatchAdviceItemContainmentLineItem</i> are members of the same choice group, the message cannot contain <u>both</u> the total quantity of an item per despatch and the quantity of an item contained within a package. If the quantity per package option is used, then the total quantity for the despatch can be derived by summing the quantity per package values for the despatch.		
<i>Schema Constraints</i>	<i>Mandatory:</i> No		
	<i>Data Type:</i> float		
	<i>Cardinality:</i> 1..1		
<i>Co-requisites</i>	None		

<i>Optional Elements</i>	(Relative to or →quantityContained→unitOfMeasure→ measurementUnitCodeValue (<i>string</i>) despatchAdviceItemContainmentLineItem despatchAdviceLogisticUnitLineItem→despatchAdviceItemContainmentLineItem)
--------------------------	--

4.30 Ordered Quantity

<i>AS5023 Reference</i>	<i>Section:</i> Detail	<i>Group:</i> Item Detail	<i>Element:</i> Quantities
<i>Description/Comments</i>			
<i>GS1 XML Path</i>	(Relative to or →requestedQuantity→value despatchAdviceItemContainmentLineItem despatchAdviceLogisticUnitLineItem→despatchAdviceItemContainmentLineItem)		
<i>Basic Type</i>	Element		
<i>Comments</i>	Because <i>despatchAdviceLogisticsUnitLineItem</i> and <i>despatchAdviceItemContainmentLineItem</i> are members of the same choice group, the message cannot contain <u>both</u> the total quantity of an item per despatch and the quantity of an item contained within a package. If the quantity per package option is used, then the total quantity for the despatch can be derived by summing the quantity per package values for the despatch.		
<i>Schema Constraints</i>	<i>Mandatory:</i> No		
	<i>Data Type:</i> float		
	<i>Cardinality:</i> 1..1		
<i>Co-requisites</i>	None		
<i>Optional Elements</i>	(Relative to or →requestedQuantity→unitOfMeasure→ measurementUnitCodeValue (<i>string</i>) despatchAdviceItemContainmentLineItem despatchAdviceLogisticUnitLineItem→despatchAdviceItemContainmentLineItem)		

4.31 Batch Number

<i>AS5023 Reference</i>	<i>Section:</i>	<i>Group:</i>	<i>Element:</i>
<i>Description/Comments</i>	Related to Item Details		
<i>GS1 XML Path</i>	(Relative to despatchAdviceItemContainmentLineItem or despatchAdviceLogisticUnitLineItem→despatchAdviceItemContainmentLineItem) →extendedAttributes→batchNumber		
<i>Basic Type</i>	Element		
<i>Comments</i>			
<i>Schema Constraints</i>	Mandatory: No		
	Data Type: string		
	Cardinality: 0..1		
<i>Co-requisites</i>	None		
<i>Optional Elements</i>	(Relative to despatchAdviceItemContainmentLineItem→extendedAttributes or despatchAdviceLogisticUnitLineItem→despatchAdviceItemContainmentLineItem→extendedAttributes) availableForSaleDate (date) bestBeforeDate (date) countryOfOrigin (list) itemExpirationDate (date) lotNumber (string) packagingDate (date) productionDate (date) productQualityIndication (QuantityType) sellByDate (date) shelfLife (string) transactionalItemWeight (UnitMeasurementType)		

4.32 Serial Numbers

AS5023 Reference	Section:	Group:	Element:
Description/Comments	Related to Item Details		
GS1 XML Path	(Relative to despatchAdviceItemContainmentLineItem or despatchAdviceLogisticUnitLineItem→despatchAdviceItemContainmentLineItem) →listForEachItem→serialNumber		
Basic Type			
Comments			
Schema Constraints	Mandatory: No		
	Data Type: string		
	Cardinality: 1..1		
	Cardinality of <i>listForEachItem</i> is 0..*		
Co-requisites	(Relative to despatchAdviceItemContainmentLineItem or despatchAdviceLogisticUnitLineItem→despatchAdviceItemContainmentLineItem) →number (<i>Attribute, Non-negative Integer</i>) →quantityContained→value (<i>float</i>)		

Optional Elements	(Relative to despatchAdviceItemContainmentLineItem or despatchAdviceLogisticUnitLineItem→despatchAdviceItemContainmentLineItem) →requestedItemIdentification (<i>TradeItemIdentificationType</i>) →productCertification (<i>DetailLevelReferenceType</i>) →promotionalDeal (<i>DetailLevelReferenceType</i>) →customer (<i>DetailLevelReferenceType</i>) →specification (<i>DetailLevelReferenceType</i>) →deliveryNote (<i>DetailLevelReferenceType</i>) →consignment (<i>DetailLevelReferenceType</i>) →contract (<i>DetailLevelReferenceType</i>) →purchaseOrder (<i>DocumentOrDocumentLineReferenceType</i>) →purchaseConditions (<i>DocumentOrDocumentLineReferenceType</i>) →extendedAttributes (<i>TransactionalItemDataType</i>) →requestedQuantity (<i>QuantityType</i>) →freeGoodsQuantity (<i>QuantityType</i>) →quantityVariance (<i>QuantityVarianceType</i>) →countryOfLastProcessing (<i>ISO3166_1CodeType</i>) →countryOfOrigin (<i>ISO3166_1CodeType</i>) →locationOfLastProcessing (<i>LocationInformationType</i>) →locationOfOrigin (<i>LocationInformationType</i>)
--------------------------	---

4.33 Expiry Date

Note: AS5023 identifies an Estimated Delivery Date as a data element at the item level. Delivery Dates apply to the whole shipment and so are held at the header level.

AS5023 Reference	Section: Detail	Group: Item details	Element: Dates
Description/Comments	The dates identified in AS5023 are: estimated delivery date; expiry date; best before date.		
GS1 XML Path	(Relative to despatchAdviceItemContainmentLineItem or despatchAdviceLogisticUnitLineItem→despatchAdviceItemContainmentLineItem) →extendedAttributes→itemExpirationDate		

<i>Basic Type</i>	Element
<i>Comments</i>	If there are multiple Expiry Dates for the item being despatched, then multiple <i>despatchAdviceItemContainmentLineItem</i> elements must be used. The strategy for processing multiple Expiry Dates will be linked to the strategies for Best Before Dates (4.34), Batch Numbers(4.31), and Serial Numbers (4.32).
<i>Schema Constraints</i>	<i>Mandatory:</i> No
	<i>Data Type:</i> date
	<i>Cardinality:</i> 0..1
<i>Co-requisites</i>	None
<i>Optional Elements</i>	(Relative to <i>despatchAdviceItemContainmentLineItem</i> → <i>extendedAttributes</i> or <i>despatchAdviceLogisticUnitLineItem</i> → <i>despatchAdviceItemContainmentLineItem</i> → <i>extendedAttributes</i>) <i>availableForSaleDate</i> (<i>date</i>) <i>batchNumber</i> (<i>string</i>) <i>bestBeforeDate</i> (<i>date</i>) <i>countryOfOrigin</i> (<i>list</i>) <i>lotNumber</i> (<i>string</i>) <i>packagingDate</i> (<i>date</i>) <i>productionDate</i> (<i>date</i>) <i>productQualityIndication</i> (<i>QuantityType</i>) <i>sellByDate</i> (<i>date</i>) <i>shelfLife</i> (<i>string</i>) <i>transactionalItemWeight</i> (<i>UnitMeasurementType</i>)

4.34 Best Before Dates

<i>AS5023 Reference</i>	<i>Section:</i> Detail	<i>Group:</i> Item details	<i>Element:</i> Dates
<i>Description/Comments</i>	The dates identified in AS5023 are: estimated delivery date; expiry date; best before date.		
<i>GS1 XML Path</i>	(Relative to despatchAdviceItemContainmentLineItem or despatchAdviceLogisticUnitLineItem→despatchAdviceItemContainmentLineItem) →extendedAttributes→bestBeforeDate		
<i>Basic Type</i>	Element		
<i>Comments</i>	If there are multiple Best Before Dates for the item being despatched, then multiple <i>despatchAdviceItemContainmentLineItem</i> elements must be used. The strategy for processing multiple Best Before Dates will be linked to the strategies for Expiry Dates (4.33), Batch Numbers(4.31), and Serial Numbers(4.32).		
<i>Schema Constraints</i>	<i>Mandatory:</i> No		
	<i>Data Type:</i> date		
	<i>Cardinality:</i> 0..1		
<i>Co-requisites</i>	None		
<i>Optional Elements</i>	(Relative to despatchAdviceItemContainmentLineItem→extendedAttributes or despatchAdviceLogisticUnitLineItem→despatchAdviceItemContainmentLineItem→extendedAttributes) availableForSaleDate (<i>date</i>) batchNumber (<i>string</i>) countryOfOrigin (<i>list</i>) itemExpirationDate (<i>date</i>) lotNumber (<i>string</i>) packagingDate (<i>date</i>) productionDate (<i>date</i>) productQualityIndication (<i>QuantityType</i>) sellByDate (<i>date</i>) shelfLife (<i>string</i>) transactionalItemWeight (<i>UnitMeasurementType</i>)		

4.35 Order Line Number

<i>AS5023 Reference</i>	<i>Section:</i> Detail	<i>Group:</i> Item details	<i>Element:</i> Order Line Number
<i>Description/Comments</i>	This is a reference to the line number in the original Purchase Order.		
<i>GS1 XML Path</i>	(Relative to despatchAdviceItemContainmentLineItem or despatchAdviceLogisticUnitLineItem→despatchAdviceItemContainmentLineItem) →purchaseOrder→documentLineReference→number		
<i>Basic Type</i>	Element		
<i>Comments</i>	The PurchaseOrder element exists at header level (purchaseOrderDocumentOrDocumentLineReference), item level (purchaseOrder), and package item level (purchaseOrder). The item level or package item level version must be used. The schema structure mandates that only one of these two can be used at any one time. The details in this section apply to both versions.		
<i>Schema Constraints</i>	<i>Mandatory:</i> No		
	<i>Data Type:</i> Non-negative Integer		
	<i>Cardinality:</i> 1..1		
<i>Co-requisites</i>	None		
<i>Optional Elements</i>	(Relative to despatchAdviceItemContainmentLineItem→purchaseOrder→documentLineReference or despatchAdviceLogisticUnitLineItem→despatchAdviceItemContainmentLineItem→purchaseOrder→documentLineReference) →documentReference→uniqueCreatorIdentification (<i>string</i>) →documentReference→contentOwner→gln (<i>Global Location Number</i>) →documentReference→contentOwner→additionalPartyIdentificationValue (<i>string</i>) →documentReference→contentOwner→additionalPartyIdentificationType (<i>list</i>)		

4.35.1 Order Number

AS5023 Reference	Section: Detail	Group: Item details	Element: Order Line Number
Description/Comments	Related to Order Line Number		
GS1 XML Path	(Relative to despatchAdviceItemContainmentLineItem or despatchAdviceLogisticUnitLineItem→despatchAdviceItemContainmentLineItem) →purchaseOrder→documentLineReference→documentReference→ uniqueCreatorIdentification		
Basic Type			
Comments			
Schema Constraints	Mandatory: No		
	Data Type: string		
	Cardinality: 1..1		
	Cardinality of documentReference is 0..1		
Co-requisites	(Relative to despatchAdviceItemContainmentLineItem→purchaseOrder→documentLineReference or despatchAdviceLogisticUnitLineItem→despatchAdviceItemContainmentLineItem→purchaseOrder→documentLineReference) →number (Non-negative Integer) →documentReference→creationDateTime (Attribute, dateTime) →documentReference→contentOwner→gln (Global Location Number)		
Optional Elements	(Relative to despatchAdviceItemContainmentLineItem→purchaseOrder→documentLineReference or despatchAdviceLogisticUnitLineItem→despatchAdviceItemContainmentLineItem→purchaseOrder→documentLineReference) →documentReference→contentOwner→additionalPartyIdentificationValue (string) →documentReference→contentOwner→additionalPartyIdentificationType (list)		

4.35.2 Order Date

AS5023 Reference	Section:	Group:	Element:
Description/Comments	Related to Order Line Number		
GS1 XML Path	(Relative to despatchAdviceItemContainmentLineItem→purchaseOrder→documentLineReference or despatchAdviceLogisticUnitLineItem→despatchAdviceItemContainmentLineItem→purchaseOrder→documentLineReference) →documentReference→creationDateTime		

<i>Basic Type</i>	Attribute
<i>Comments</i>	
<i>Schema Constraints</i>	<i>Mandatory:</i> No
	<i>Data Type:</i> dateTime
	<i>Cardinality:</i> 0..1
<i>Co-requisites</i>	(Relative to despatchAdviceItemContainmentLineItem→purchaseOrder→documentLineReference or despatchAdviceLogisticUnitLineItem→despatchAdviceItemContainmentLineItem→purchaseOrder→documentLineReference) →number (<i>Non-negative Integer</i>) →documentReference→uniqueCreatorIdentification (<i>string</i>) →documentReference→contentOwner→gln (<i>Global Location Number</i>)
<i>Optional Elements</i>	(Relative to despatchAdviceItemContainmentLineItem→purchaseOrder→documentLineReference or despatchAdviceLogisticUnitLineItem→despatchAdviceItemContainmentLineItem→purchaseOrder→documentLineReference) →documentReference→contentOwner→additionalPartyIdentificationValue (<i>string</i>) →documentReference→contentOwner→additionalPartyIdentificationType (<i>list</i>)

4.36 Order Creator

<i>AS5023 Reference</i>	<i>Section:</i>	<i>Group:</i>	<i>Element:</i>
<i>Description/Comments</i>	Related to Order Line Number		
<i>GS1 XML Path</i>	(Relative to despatchAdviceItemContainmentLineItem→purchaseOrder→documentLineReference or despatchAdviceLogisticUnitLineItem→despatchAdviceItemContainmentLineItem→purchaseOrder→documentLineReference) →documentReference→contentOwner→gln		
<i>Basic Type</i>	Element		
<i>Comments</i>			
<i>Schema Constraints</i>	<i>Mandatory:</i> No		
	<i>Data Type:</i> Global Location Number		
	<i>Cardinality:</i> 1..1		

Co-requisites	(Relative to despatchAdviceItemContainmentLineItem→purchaseOrder→documentLineReference or despatchAdviceLogisticUnitLineItem→despatchAdviceItemContainmentLineItem→purchaseOrder→documentLineReference) →number (<i>Non-negative Integer</i>) →documentReference→creationDateTime (<i>Attribute, dateTime</i>) →documentReference→contentOwner→gln (<i>Global Location Number</i>)
Optional Elements	(Relative to despatchAdviceItemContainmentLineItem→purchaseOrder→documentLineReference or despatchAdviceLogisticUnitLineItem→despatchAdviceItemContainmentLineItem→purchaseOrder→documentLineReference) →documentReference→contentOwner→additionalPartyIdentificationValue (<i>string</i>) →documentReference→contentOwner→additionalPartyIdentificationType (<i>list</i>)

4.37 Quantity Variances

AS5023 Reference	Section: Detail	Group: Quantity Variances	Element: Quantity Variances
Description/Comments			
GS1 XML Path	(Relative to despatchAdviceItemContainmentLineItem or despatchAdviceLogisticUnitLineItem→despatchAdviceItemContainmentLineItem) →quantityVariance→varianceQuantity→value		
Basic Type	Element		
Comments	If a particular item occurs multiple times, e.g. it has multiple Batch Numbers or occurs in multiple packages, then the variances should be recorded with the first occurrence only. despatchAdviceItemContainmentLineItem also occurs as a child element of despatchLogisticUnitLineItem, and the same rules apply.		
Schema Constraints	Mandatory: No		
	Data Type: float		
	Cardinality: 1..1		
	The cardinality of quantityVariance is 0..* so multiple types of variances can be recorded.		

<i>Co-requisites</i>	(Relative to or → changeReason (<i>list</i>) → deliveryDateVariance (<i>date</i>)	despatchAdviceItemContainmentLineItem→quantityVariance despatchAdviceLogisticUnitLineItem→despatchAdviceItemContainmentLineItem→quantityVariance)
<i>Optional Elements</i>	(Relative to or → varianceQuantity→unitOfMeasure→measurementUnitCodeValue (<i>string</i>)	despatchAdviceItemContainmentLineItem→quantityVariance despatchAdviceLogisticUnitLineItem→despatchAdviceItemContainmentLineItem→quantityVariance)

4.38 Variance Reason

<i>AS5023 Reference</i>	Section: Detail	Group: Quantity Variances	Element: Quantity Variances
<i>Description/Comments</i>			
<i>GS1 XML Path</i>	(Relative to or → quantityVariance→changeReason		
<i>Basic Type</i>	Element		
<i>Comments</i>			
<i>Schema Constraints</i>	Mandatory: No		
	Data Type: list		
	Cardinality: 1..1		
	The cardinality of quantityVariance is 0..* so multiple types of variances can be recorded.		
	Allowable values are: ARTICLE_CODE_UNKNOWN	DAMAGED ITEM_NOT_ORDERED	OUT_OF_INVENTORY PACK_DIFFERENCE
<i>Co-requisites</i>	(Relative to or → varianceQuantity →value (<i>float</i>) → deliveryDateVariance (<i>date</i>)		
	despatchAdviceItemContainmentLineItem→quantityVariance despatchAdviceLogisticUnitLineItem→despatchAdviceItemContainmentLineItem→quantityVariance)		

<i>Optional Elements</i>	(Relative to or →varianceQuantity→unitOfMeasure→measurementUnitCodeValue (string) despatchAdviceItemContainmentLineItem→quantityVariance despatchAdviceLogisticUnitLineItem→despatchAdviceItemContainmentLineItem→quantityVariance)
--------------------------	---

4.39 Delivery Date: Variances

<i>AS5023 Reference</i>	<i>Section:</i> Detail	<i>Group:</i> Quantity variance	<i>Element:</i> Delivery date for variances
<i>Description/Comments</i>			
<i>GS1 XML Path</i>	(Relative to or →quantityVariance→deliveryDateVariance despatchAdviceItemContainmentLineItem despatchAdviceLogisticUnitLineItem→despatchAdviceItemContainmentLineItem)		
<i>Basic Type</i>	Attribute		
<i>Comments</i>			
<i>Schema Constraints</i>	<i>Mandatory:</i> No		
	<i>Data Type:</i> date		
	<i>Cardinality:</i> 0..1		
	The cardinality of quantityVariance is 0..* so multiple types of variances can be recorded.		
<i>Co-requisites</i>	(Relative to or →varianceQuantity →value (float) →changeReason (list) despatchAdviceItemContainmentLineItem→quantityVariance despatchAdviceLogisticUnitLineItem→despatchAdviceItemContainmentLineItem→quantityVariance)		
<i>Optional Elements</i>	(Relative to or →varianceQuantity→unitOfMeasure→measurementUnitCodeValue (string) despatchAdviceItemContainmentLineItem→quantityVariance despatchAdviceLogisticUnitLineItem→despatchAdviceItemContainmentLineItem→quantityVariance)		

5 Cross Dock Extension Elements

5.1 Comments

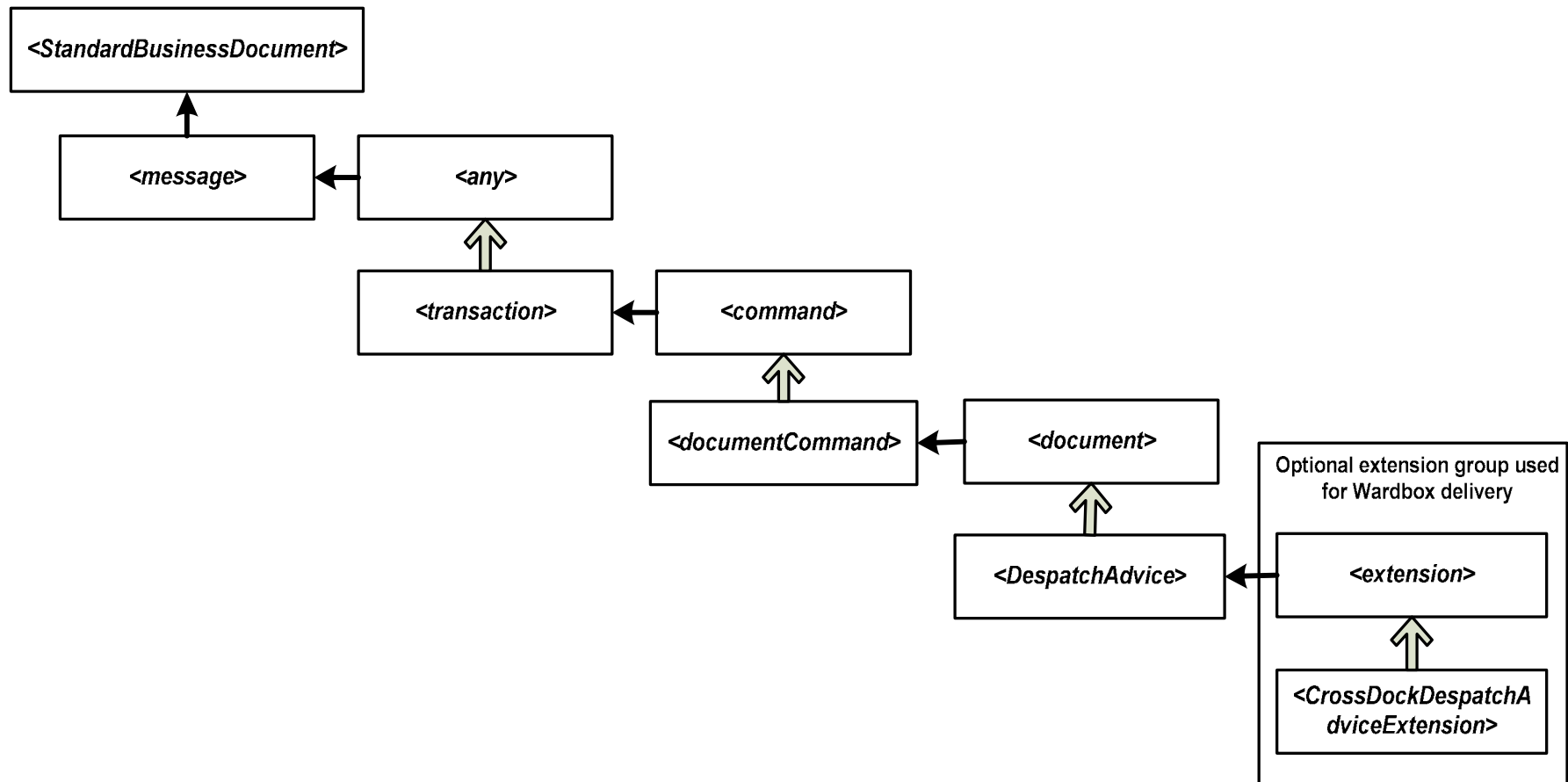
The 'extension<##any>' element at header level is optional and used for the business scenario where Ultimate Consignee or Wardbox delivery is required. The <##any> element cardinality is set to unbounded and can repeat either single or multiple times.

<##any> must be replaced by <deliver:crossDockDespatchAdviceExtension> element.

To populate the Cross Dock Extension the mandatory and conditional elements under 'despatchAdvice→despatchAdviceLogisticsUnitLineItem' must be populated.

The root Xpath for Cross dock extension is as follows:

despatchAdvice→despatchAdviceLogisticUnitLineitem→extension→ deliver:CrossDockDespatchAdviceExtension.



5.2 Shipment Identification Number

<i>AS5023 Reference</i>	<i>Section:</i>	<i>Group:</i>	<i>Element:</i>
<i>Description/Comments</i>			
<i>GS1 XML Path</i>	crossDockDespatchAdviceExtension→shipmentIdentificationNumber		
<i>Basic Type</i>	Element		
<i>Comments</i>	A globally unique number assigned by a Shipper to a shipment, identifying a logical grouping of physical units for the purpose of a transport shipment.		
<i>Schema Constraints</i>	<i>Mandatory:</i> No		
	<i>Data Type:</i> string		
	<i>Cardinality:</i> 0..1		
<i>Co-requisites</i>			

5.3 Cross Dock Location

<i>AS5023 Reference</i>	<i>Section:</i>	<i>Group:</i>	<i>Element:</i>
<i>Description/Comments</i>			
<i>GS1 XML Path</i>	crossDockDespatchAdviceExtension→ultimateConsignee→GLN		
<i>Basic Type</i>	Element		
<i>Comments</i>	A GLN to identify the location for the Cross Dock delivery. Example: Host ward		
<i>Schema Constraints</i>	<i>Mandatory:</i> Yes		
	<i>Data Type:</i> Global Location Number		
	<i>Cardinality:</i> 1		
<i>Co-requisites</i>			

<i>Optional Elements</i>	(Relative to crossDockDespatchAdviceExtension→ultimateConsignee →additionalPartyIdentification) →additionalPartyIdentificationValue (string) →additionalPartyIdentificationType (AdditionalPartyIdentificationListType)
--------------------------	---

5.3.1 Additional Party Identification Value

<i>AS5023 Reference</i>	<i>Section:</i>	<i>Group:</i>	<i>Element:</i>
<i>Description/Comments</i>			
<i>GS1 XML Path</i>	crossDockDespatchAdviceExtension→ultimateConsignee→additionalPartyIdentification→ additionalPartyIdentificationValue		
<i>Basic Type</i>	Element		
<i>Comments</i>	Free or coded text used to identify delivery location		
<i>Schema Constraints</i>	<i>Mandatory:</i> No		
	<i>Data Type:</i> Additional Party Identification		
	<i>Cardinality:</i> 1		
<i>Co-requisites</i>	crossDockDespatchAdviceExtension→ultimateConsignee→additionalPartyIdentification→ additionalPartyIdentificationType		
<i>Optional Elements</i>			

5.3.2 Additional Party Identification Type

<i>AS5023 Reference</i>	<i>Section:</i>	<i>Group:</i>	<i>Element:</i>
<i>Description/Comments</i>			
<i>GS1 XML Path</i>	crossDockDespatchAdviceExtension→ultimateConsignee→additionalPartyIdentification→ additionalPartyIdentificationType		
<i>Basic Type</i>	Element		
<i>Comments</i>	Free or coded text used to identify delivery location		
<i>Schema Constraints</i>	<i>Mandatory:</i> No		
	<i>Data Type:</i> Additional Party Identification		

	Cardinality: 1
	Allowable Values are: BUYER_ASSIGNED_IDENTIFIER_FOR_A_PARTY SELLER_ASSIGNED_IDENTIFIER_FOR_A_PARTY FOR_INTERNAL_USE_#(numbered 1-20)
Co-requisites	crossDockDespatchAdviceExtension→ultimateConsignee→additionalPartyIdentification→ additionalPartyIdentificationValue
Optional Elements	

5.4 Delivery Note

AS5023 Reference	Section:	Group:	Element:
Description/Comments	Related to Cross Dock Despatch Advice Reference Number		
GS1 XML Path	(Relative to crossDockDespatchAdviceExtension→shipmentPerUltimateConsignee→despatchAdviceLogisticUnitLineItem→despatchAdviceItemContainmentLineItem) deliveryNote→reference→referenceIdentification		
Basic Type	Element		
Comments			
Schema Constraints	Mandatory: No		
	Data Type: string		
	Cardinality: 1..1		
Co-requisites	(Relative to crossDockDespatchAdviceExtension→shipmentPerUltimateConsignee→despatchAdviceLogisticUnitLineItem→despatchAdviceItemContainmentLineItem) →deliveryNote→reference→referenceDateTime (dateTime) →number (Non-negative Integer)		
Optional Elements	None		

5.4.1 Delivery Note Date

AS5023 Reference	Section:	Group:	Element:
Description/Comments	Related to Cross Dock Despatch Advice Reference Number		
GS1 XML Path	(Relative to crossDockDespatchAdviceExtension→shipmentPerUltimateConsignee→despatchAdviceLogisticUnitLineItem→despatchAdviceItemContainmentLineItem) deliveryNote→reference→referenceDateTime		
Basic Type	Element		
Comments			
Schema Constraints	Mandatory: No		
	Data Type: dateTime		
	Cardinality: 1..1		
Co-requisites	(Relative to crossDockDespatchAdviceExtension→shipmentPerUltimateConsignee→despatchAdviceLogisticUnitLineItem→despatchAdviceItemContainmentLineItem) →deliveryNote→reference→referenceIdentification (string) →deliveryNote→number (Non-negative Integer)		
Optional Elements	None		

5.4.2 Delivery Note Line Number

AS5023 Reference	Section:	Group:	Element:
Description/Comments	Related to Cross Dock Despatch Advice Reference Number		
GS1 XML Path	(Relative to crossDockDespatchAdviceExtension→shipmentPerUltimateConsignee→despatchAdviceLogisticUnitLineItem→despatchAdviceItemContainmentLineItem) →deliveryNote→number		
Basic Type	Attribute		
Comments			
Schema Constraints	Mandatory: No		
	Data Type: Non-negative Number		

	Cardinality: 1..1
Co-requisites	(Relative to crossDockDespatchAdviceExtension→shipmentPerUltimateConsignee→despatchAdviceLogisticUnitLineItem→despatchAdviceItemContainmentLineItem) →deliveryNote→reference→referenceIdentification (string) →deliveryNote→reference→referenceDateTime (dateTime)
Optional Elements	None

5.5 Consignment Note

AS5023 Reference	Section:	Group:	Element:
Description/Comments			
GS1 XML Path	(Relative to crossDockDespatchAdviceExtension→shipmentPerUltimateConsignee→despatchAdviceLogisticUnitLineItem→despatchAdviceItemContainmentLineItem) →consignment→reference→referenceIdentification		
Basic Type	Element		
Comments			
Schema Constraints	Mandatory: No		
	Data Type: string		
	Cardinality: 1..1		
Co-requisites	(Relative to crossDockDespatchAdviceExtension→shipmentPerUltimateConsignee→despatchAdviceLogisticUnitLineItem→despatchAdviceItemContainmentLineItem) →consignment→reference→referenceDateTime (dateTime) →consignment→number (Non-negative Integer)		
Optional Elements	None		

5.5.1 Consignment Note Date

AS5023 Reference	Section:	Group:	Element:
Description/Comments			
GS1 XML Path	(Relative to crossDockDespatchAdviceExtension→shipmentPerUltimateConsignee→despatchAdviceLogisticUnitLineItem→despatchAdviceItemContainmentLineItem) consignment→reference→referenceDateTime		
Basic Type	Element		
Comments			
Schema Constraints	Mandatory: No		
	Data Type: DateTime		
	Cardinality: 1..1		
Co-requisites	(Relative to crossDockDespatchAdviceExtension→shipmentPerUltimateConsignee→despatchAdviceLogisticUnitLineItem→despatchAdviceItemContainmentLineItem) →consignment→reference→referenceIdentification (string) →consignment→number (Non-negative Integer)		
Optional Elements	None		

5.5.2 Consignment Note Line Number (Detail Level)

AS5023 Reference	Section:	Group:	Element:
Description/Comments			
GS1 XML Path	(Relative to crossDockDespatchAdviceExtension→shipmentPerUltimateConsignee→despatchAdviceLogisticUnitLineItem→despatchAdviceItemContainmentLineItem) -→consignment→number		
Basic Type	Attribute		
Comments			
Schema Constraints	Mandatory: No		
	Data Type: Non-negative Integer		

	Cardinality: 1..1
<i>Co-requisites</i>	(Relative to crossDockDespatchAdviceExtension→shipmentPerUltimateConsignee→despatchAdviceLogisticUnitLineItem→despatchAdviceItemContainmentLineItem) →consignment→reference→referenceIdentification (<i>string</i>) →consignment→reference→referenceDateTime (<i>dateTime</i>)
<i>Optional Elements</i>	None

5.6 Delivery and Despatch Dates

5.6.1 Comments

In *estimatedDelivery*, *estimatedDeliveryDateTime* and *estimatedDeliveryPeriod* are mandatory, *actualShipDateTime* is optional.

5.6.2 Delivery Date

<i>AS5023 Reference</i>	<i>Section:</i>	<i>Group:</i> Delivery and despatch	<i>Element:</i> Despatch date
<i>Description/Comments</i>			
<i>GS1 XML Path</i>	(Relative to crossDockDespatchAdviceExtension→shipmentPerUltimateConsignee→estimatedDelivery) estimatedDeliveryDateTime		
<i>Basic Type</i>	Element		
<i>Comments</i>			
<i>Schema Constraints</i>	Mandatory: No		
	Data Type: dateTime		
	Cardinality: 1..1		
<i>Co-requisites</i>	(Relative to crossDockDespatchAdviceExtension→shipmentPerUltimateConsignee→estimatedDelivery) →actualShipDateTime (<i>dateTime</i>) →estimatedDeliveryPeriod (<i>TimeOrDateTimePeriod</i>)		
<i>Optional Elements</i>			

5.6.3 Actual Ship Date

<i>AS5023 Reference</i>	<i>Section:</i>	<i>Group:</i> Delivery and despatch	<i>Element:</i> Despatch date
<i>Description/Comments</i>			
<i>GS1 XML Path</i>	(Relative to crossDockDespatchAdviceExtension→shipmentPerUltimateConsignee→estimatedDelivery) actualShipDateTime		
<i>Basic Type</i>	Element		
<i>Comments</i>			
<i>Schema Constraints</i>	<i>Mandatory:</i> No		
	<i>Data Type:</i> dateTime		
	<i>Cardinality:</i> 0..1		
<i>Co-requisites</i>	(Relative to crossDockDespatchAdviceExtension→shipmentPerUltimateConsignee→estimatedDelivery) →estimatedDeliveryDateTime (<i>dateTime</i>) →estimatedDeliveryPeriod (<i>TimeOrDateTimePeriod</i>)		
<i>Optional Elements</i>			

5.6.4 Earliest Delivery Date

<i>AS5023 Reference</i>	<i>Section:</i>	<i>Group:</i>	<i>Element:</i>
<i>Description/Comments</i>	Related to Despatch and Delivery Dates		
<i>GS1 XML Path</i>	(Relative to crossDockDespatchAdviceExtension→shipmentPerUltimateConsignee→estimatedDelivery) →estimatedDeliveryPeriod→timePeriod→beginDate		
<i>Basic Type</i>	Attribute		
<i>Comments</i>			
<i>Schema Constraints</i>	<i>Mandatory:</i> No		
	<i>Data Type:</i> date		

	Cardinality: 1..1
	The <i>timePeriod</i> and <i>dateTimePeriod</i> elements cannot both be used together. They are a choice group.
Co-requisites	(Relative to crossDockDespatchAdviceExtension→shipmentPerUltimateConsignee→estimatedDelivery) →estimatedDeliveryPeriod→timePeriod→endDate
Optional Elements	None

5.6.5 Latest Delivery Date

AS5023 Reference	Section:	Group:	Element:
Description/Comments	Related to Despatch and Delivery Dates		
GS1 XML Path	(Relative to crossDockDespatchAdviceExtension→shipmentPerUltimateConsignee→estimatedDelivery) →estimatedDeliveryPeriod→timePeriod→endDate		
Basic Type	Attribute		
Comments			
Schema Constraints	Mandatory: No		
	Data Type: date		
	Cardinality: 1..1		
	The <i>timePeriod</i> and <i>dateTimePeriod</i> elements cannot both be used together. They are a choice group.		
Co-requisites	(Relative to crossDockDespatchAdviceExtension→shipmentPerUltimateConsignee→estimatedDelivery) →estimatedDeliveryPeriod→timePeriod→beginDate		
Optional Elements	None		

5.6.6 Earliest Delivery Date/Time

AS5023 Reference	Section:	Group:	Element:
Description/Comments	Related to Despatch and Delivery Dates		
GS1 XML Path	(Relative to crossDockDespatchAdviceExtension→shipmentPerUltimateConsignee→estimatedDelivery) →estimatedDeliveryPeriod→dateTimePeriod→beginDateTime		

<i>Basic Type</i>	Attribute
<i>Comments</i>	
<i>Schema Constraints</i>	<i>Mandatory:</i> No
	<i>Data Type:</i> dateTime
	<i>Cardinality:</i> 1..1
	The <i>timePeriod</i> and <i>dateTimePeriod</i> elements cannot both be used together. They are a choice group.
<i>Co-requisites</i>	(Relative to crossDockDespatchAdviceExtension→shipmentPerUltimateConsignee→estimatedDelivery) →estimatedDeliveryPeriod→dateTimePeriod→endDateTime
<i>Optional Elements</i>	None

5.6.7 Latest Delivery Date/Time

<i>AS5023 Reference</i>	<i>Section:</i>	<i>Group:</i>	<i>Element:</i>
<i>Description/Comments</i>	Related to Despatch and Delivery Dates		
<i>GS1 XML Path</i>	(Relative to crossDockDespatchAdviceExtension→shipmentPerUltimateConsignee→estimatedDelivery) →estimatedDeliveryPeriod→dateTimePeriod→endDateTime		
<i>Basic Type</i>	Attribute		
<i>Comments</i>			
<i>Schema Constraints</i>	<i>Mandatory:</i> No		
	<i>Data Type:</i> dateTime		
	<i>Cardinality:</i> 1..1		
	The <i>timePeriod</i> and <i>dateTimePeriod</i> elements cannot both be used together. They are a choice group.		
<i>Co-requisites</i>	(Relative to crossDockDespatchAdviceExtension→shipmentPerUltimateConsignee→estimatedDelivery) →estimatedDeliveryPeriod→dateTimePeriod→beginDateTime		
<i>Optional Elements</i>	None		

5.7 Packaging Level

<i>AS5023 Reference</i>	<i>Section:</i>	<i>Group:</i> Packaging	<i>Element:</i> Packaging level
<i>Description/Comments</i>	Entire shipment, outer, intermediate, or inner		
<i>GS1 XML Path</i>	crossDockDespatchAdviceExtension→shipmentPerUltimateConsignee→despatchAdviceLogisticsUnitLineItem→levelId→levelIdentification		
<i>Basic Type</i>	Element		
<i>Comments</i>	See also 4.18.1 Parent Packaging Level.		
<i>Schema Constraints</i>	<i>Mandatory:</i> No		
	<i>Data Type:</i> Integer		
	<i>Cardinality:</i> 1..1		
<i>Co-requisites</i>	crossDockDespatchAdviceExtension→shipmentPerUltimateConsignee→despatchAdviceLogisticsUnitLineItem →logisticUnitIdentification-→serialShipmentContainerCode→ serialShippingContainerCode		
<i>Optional Elements</i>	(Relative to crossDockDespatchAdviceExtension→shipmentPerUltimateConsignee→despatchAdviceLogisticsUnitLineItem) →quantityOfChildren (<i>integer</i>) →packageType→packageTypeDescriptionCodeValue (<i>string</i>) →childPackageType→packageTypeDescriptionCodeValue (<i>string</i>) →logisticUnitMeasurement (<i>LogisticUnitMeasurementType</i>) →parentLevelId→levelIdentification (<i>integer</i>) →crossDockDespatchAdviceExtension→shipmentPerUltimateConsignee→despatchAdviceItemContainmentLineItem (<i>DespatchAdviceItemContainmentLineItemType</i>)		

5.7.1 Parent Packaging Level

<i>AS5023 Reference</i>	<i>Section:</i>	<i>Group:</i>	<i>Element:</i>
<i>Description/Comments</i>	Related to Packaging Level		
<i>GS1 XML Path</i>	crossDockDespatchAdviceExtension→shipmentPerUltimateConsignee→despatchAdviceLogisticsUnitLineItem→parentLevelId→levelIdentification		

<i>Basic Type</i>	Element
<i>Comments</i>	
<i>Schema Constraints</i>	<i>Mandatory:</i> No
	<i>Data Type:</i> Integer
	<i>Cardinality:</i> 1..1
<i>Co-requisites</i>	crossDockDespatchAdviceExtension→shipmentPerUltimateConsignee→despatchAdviceLogisticsUnitLineItem→logisticUnitIdentification- →serialShipmentContainerCode→serialShippingContainerCode
<i>Optional Elements</i>	(Relative to despatchAdviceLogisticsUnitLineItem) →quantityOfChildren (<i>integer</i>) →packageType→packageTypeDescriptionCodeValue (<i>string</i>) →childPackageType→packageTypeDescriptionCodeValue (<i>string</i>) →logisticUnitMeasurement (<i>LogisticUnitMeasurementType</i>) →levelId→levelIdentification (<i>integer</i>) →crossDockDespatchAdviceExtension→shipmentPerUltimateConsignee→despatchAdviceItemContainmentLineItem (<i>DespatchAdviceItemContainmentLineItemType</i>)

5.8 Packaging Type

<i>AS5023 Reference</i>	<i>Section:</i>	<i>Group:</i> Packaging	<i>Element:</i> Packaging
<i>Description/Comments</i>			
<i>GS1 XML Path</i>	crossDockDespatchAdviceExtension→shipmentPerUltimateConsignee→despatchAdviceLogisticsUnitLineItem→packageType →packageTypeDescriptionCodeValue		
<i>Basic Type</i>	Element		
<i>Comments</i>			
<i>Schema Constraints</i>	<i>Mandatory:</i> No		
	<i>Data Type:</i> list		
	<i>Cardinality:</i> 1..1		

	For the elements of this list, refer to the EANCOM element 7065 which contains a codelist based on UN/ECE Recommendation No. 21. It is available on the web at: http://www.gefeg.com/service/eancom2003/ean2003s3/experts/part3/dc8m.htm
<i>Co-requisites</i>	(Relative to crossDockDespatchAdviceExtension→shipmentPerUltimateConsignee→despatchAdviceLogisticsUnitLineItem) logisticUnitIdentification→serialShipmentContainerCode→serialShipmentContainerCode→serialShippingContainerCode (<i>string</i>)
<i>Optional Elements</i>	(Relative to despatchAdviceLogisticsUnitLineItem) →quantityOfChildren (<i>integer</i>) →childPackageType→packageTypeDescriptionCodeValue (<i>string</i>) →logisticUnitMeasurement (<i>LogisticUnitMeasurementType</i>) →levelId→levelIdentification (<i>integer</i>) →parentLevelId→levelIdentification (<i>integer</i>) →crossDockDespatchAdviceExtension→shipmentPerUltimateConsignee→despatchAdviceItemContainmentLineItem (<i>DespatchAdviceItemContainmentLineItemType</i>)

5.8.1 Child Package Type

<i>AS5023 Reference</i>	<i>Section:</i>	<i>Group:</i>	<i>Element:</i>
<i>Description/Comments</i>	Related to Packaging		
<i>GS1 XML Path</i>	crossDockDespatchAdviceExtension→shipmentPerUltimateConsignee→despatchAdviceLogisticsUnitLineItem →childPackageType→packageTypeDescriptionCodeValue		
<i>Basic Type</i>	Element		
<i>Comments</i>			
<i>Schema Constraints</i>	<i>Mandatory:</i> No		
	<i>Data Type:</i> list		
	<i>Cardinality:</i> 1..1		
	For the elements of this list, refer to the EANCOM element 7065 which contains a codelist based on UN/ECE Recommendation No. 21. It is available on the web at: http://www.gefeg.com/service/eancom2003/ean2003s3/experts/part3/dc8m.htm		
<i>Co-requisites</i>	(Relative to crossDockDespatchAdviceExtension→shipmentPerUltimateConsignee→despatchAdviceLogisticsUnitLineItem) logisticUnitIdentification→serialShipmentContainerCode→serialShipmentContainerCode→serialShippingContainerCode (<i>string</i>)		

Optional Elements	(Relative to crossDockDespatchAdviceExtension→shipmentPerUltimateConsignee→despatchAdviceLogisticsUnitLineItem) →quantityOfChildren (<i>integer</i>) →PackageType→packageTypeDescriptionCodeValue (<i>string</i>) →logisticUnitMeasurement (<i>LogisticUnitMeasurementType</i>) →levelId→levelIdentification (<i>integer</i>) →parentLevelId→levelIdentification (<i>integer</i>) →crossDockDespatchAdviceExtension→shipmentPerUltimateConsignee→despatchAdviceItemContainmentLineItem (<i>DespatchAdviceItemContainmentLineItemType</i>)
--------------------------	--

5.9 Number of Packages

AS5023 Reference	Section:	Group: Packaging	Element: Packaging
Description/Comments			
GS1 XML Path	crossDockDespatchAdviceExtension→shipmentPerUltimateConsignee→despatchAdviceLogisticsUnitLineItem→quantityOfChildren		
Basic Type	Element		
Comments	This element is the number of packages within the package being described.		
Schema Constraints	Mandatory: No		
	Data Type: integer		
	Cardinality: 0..1		
Co-requisites	(Relative to crossDockDespatchAdviceExtension→shipmentPerUltimateConsignee→despatchAdviceLogisticsUnitLineItem) logisticUnitIdentification→serialShipmentContainerCode→serialShipmentContainerCode→serialShippingContainerCode (<i>string</i>)		

<i>Optional Elements</i>	(Relative to crossDockDespatchAdviceExtension→shipmentPerUltimateConsignee→despatchAdviceLogisticsUnitLineItem->) →packageType→packageTypeDescriptionCodeValue (<i>list</i>) →childPackageType→packageTypeDescriptionCodeValue (<i>string</i>) →logisticUnitMeasurement (<i>LogisticUnitMeasurementType</i>) →levelId→levelIdentification (<i>integer</i>) →parentLevelId→levelIdentification (<i>integer</i>) →crossDockDespatchAdviceExtension→shipmentPerUltimateConsignee→despatchAdviceItemContainmentLineItem (<i>DespatchAdviceItemContainmentLineItemType</i>)
--------------------------	---

5.10 Package Measurements

<i>AS5023 Reference</i>	<i>Section:</i>	<i>Group:</i> Packaging	<i>Element:</i> Measurements
<i>Description/Comments</i>			
<i>GS1 XML Path</i>	crossDockDespatchAdviceExtension→shipmentPerUltimateConsignee→despatchAdviceLogisticsUnitLineItem- →logisticUnitMeasurement		
<i>Basic Type</i>	Complex Type		
<i>Comments</i>	This is a complex type which can record the lineal dimensions of the package as well as weight and volume measurements.		
<i>Schema Constraints</i>	<i>Mandatory:</i> No		
	<i>Data Type:</i> logisticUnitMeasurementType		
	<i>Cardinality:</i> 0..1		
<i>Co-requisites</i>	(Relative to crossDockDespatchAdviceExtension→shipmentPerUltimateConsignee→despatchAdviceLogisticsUnitLineItem) logisticUnitIdentification→serialShipmentContainerCode→serialShipmentContainerCode→serialShippingContainerCode (<i>string</i>)		

<i>Optional Elements</i>	(Relative to crossDockDespatchAdviceExtension→shipmentPerUltimateConsignee→despatchAdviceLogisticsUnitLineItem) →quantityOfChildren (<i>integer</i>) →packageType→packageTypeDescriptionCodeValue (<i>list</i>) →childPackageType→packageTypeDescriptionCodeValue (<i>string</i>) →levelId→levelIdentification (<i>integer</i>) →parentLevelId→levelIdentification (<i>integer</i>) →crossDockDespatchAdviceExtension→shipmentPerUltimateConsignee→despatchAdviceItemContainmentLineItem (<i>DespatchAdviceItemContainmentLineItemType</i>)
--------------------------	--

5.10.1 Package Lineal Dimensions

<i>AS5023 Reference</i>	<i>Section:</i>	<i>Group: Packaging</i>	<i>Element: Measurements</i>
<i>Description/Comments</i>			
<i>GS1 XML Path</i>	(Relative to crossDockDespatchAdviceExtension→shipmentPerUltimateConsignee→despatchAdviceLogisticsUnitLineItem →logisticUnitMeasurement→packageDimension) →packageLength→measurementValue→value →packageHeight→measurementValue→value →packageWidth→measurementValue→value		
<i>Basic Type</i>	Element		
<i>Comments</i>	All three elements behave in the same way, so they are treated as one in this document. The difference is only in their naming.		
<i>Schema Constraints</i>	<i>Mandatory:</i> No		
	<i>Data Type:</i> decimal		
	<i>Cardinality:</i> 1..1		

<i>Co-requisites</i>	(Relative to crossDockDespatchAdviceExtension→shipmentPerUltimateConsignee→despatchAdviceLogisticsUnitLineItem→logisticUnitMeasurement→packageDimension) →packageLength→measurementValue→unitOfMeasure (<i>Attribute, string</i>) →packageHeight→measurementValue→unitOfMeasure (<i>Attribute, string</i>) →packageWidth→measurementValue→unitOfMeasure (<i>Attribute, string</i>)
<i>Optional Elements</i>	crossDockDespatchAdviceExtension→shipmentPerUltimateConsignee→despatchAdviceLogisticsUnitLineItem→logisticUnitMeasurement→unitMeasurement (<i>UnitMeasurementType</i>)

5.10.2 Package: Other Measurements

<i>AS5023 Reference</i>	<i>Section:</i>	<i>Group:</i> Packaging	<i>Element:</i> Measurements
<i>Description/Comments</i>			
<i>GS1 XML Path</i>	crossDockDespatchAdviceExtension→shipmentPerUltimateConsignee→despatchAdviceLogisticsUnitLineItem→logisticUnitMeasurement→unitMeasurement→measurementValue→value		
<i>Basic Type</i>	Element		
<i>Comments</i>			
<i>Schema Constraints</i>	<i>Mandatory:</i> No		
	<i>Data Type:</i> decimal		
	<i>Cardinality:</i> 1..1		
	Allowable values for <i>measurementType</i> are: DECLARED_NET_WEIGHT	GROSS_VOLUME NET_VOLUME TARE_WEIGHT	TOTAL_GROSS_WEIGHT UNIT_GROSS_WEIGHT UNIT_NET_WEIGHT
<i>Co-requisites</i>	(Relative to crossDockDespatchAdviceExtension→shipmentPerUltimateConsignee→despatchAdviceLogisticsUnitLineItem→logisticUnitMeasurement→unitMeasurement) →measurementValue→unitOfMeasure (<i>string</i>) →measurementType (<i>list</i>)		
<i>Optional Elements</i>	None		

5.10.3 Package: Measurement Type

AS5023 Reference	Section:	Group:	Element:
Description/Comments	Related to Packaging Measurements		
GS1 XML Path	crossDockDespatchAdviceExtension→shipmentPerUltimateConsignee→despatchAdviceLogisticsUnitLineItem→logisticUnitMeasurement→unitMeasurement→measurementType		
Basic Type	Element		
Comments			
Schema Constraints	Mandatory: No		
	Data Type: list		
	Cardinality: 1..1		
	Allowable values for are: DECLARED_NET_WEIGHT	GROSS_VOLUME NET_VOLUME TARE_WEIGHT	TOTAL_GROSS_WEIGHT UNIT_GROSS_WEIGHT UNIT_NET_WEIGHT
Co-requisites	(Relative to crossDockDespatchAdviceExtension→shipmentPerUltimateConsignee→despatchAdviceLogisticsUnitLineItem→logisticUnitMeasurement→unitMeasurement) →measurementValue→unitOfMeasure (string) →measurementValue→value (decimal)		
Optional Elements	None		

5.10.4 Package: Unit of Measure

AS5023 Reference	Section:	Group:	Element:
Description/Comments	Related to Packaging Measurements		
GS1 XML Path	crossDockDespatchAdviceExtension→shipmentPerUltimateConsignee→despatchAdviceLogisticsUnitLineItem - →logisticUnitMeasurement→unitMeasurement→measurementValue→unitOfMeasure		
Basic Type	Attribute		
Comments			

Schema Constraints	<i>Mandatory:</i> No
	<i>Data Type:</i> string
	<i>Cardinality:</i> 1..1
	Allowable values for <i>unitOfMeasure</i> are defined in the EANCOM element 6411. Details of this code list can be downloaded from: http://www.gefeg.com/service/eancom2003/ean2003s3/experts/part3/dc8b.htm
Co-requisites	(Relative to crossDockDespatchAdviceExtension->shipmentPerUltimateConsignee->despatchAdviceLogisticsUnitLineItem ->logisticUnitMeasurement->unitMeasurement) →measurementValue→ value (<i>decimal</i>) →measurementType (<i>list</i>)
Optional Elements	None

5.11 Quantity per Package

AS5023 Reference	<i>Section:</i>	<i>Group:</i> Packaging	<i>Element:</i> Quantity per package
Description/Comments			
GS1 XML Path	crossDockDespatchAdviceExtension→shipmentPerUltimateConsignee→despatchAdviceLogisticUnitLineItem→despatchAdviceItemContainmentLineItem→quantityContained→value		
Basic Type	Element		
Comments	If multiple batches are contained within the package, then use one despatchAdviceItemContainmentLineItem element per batch.		
Schema Constraints	<i>Mandatory:</i> No		
	<i>Data Type:</i> float		
	<i>Cardinality:</i> 1..1		

	This element is mandatory if <i>despatchAdviceLogisticUnitLineItem</i> is used.
<i>Co-requisites</i>	(Relative to crossDockDespatchAdviceExtension→shipmentPerUltimateConsignee→despatchAdviceLogisticUnitLineItem →despatchAdviceItemContainmentLineItem) →quantityContained→unitOfMeasure→measurementUnitCodeValue (<i>string</i>) →number (<i>nonNegativeInteger</i>) →containedItemIdentification→gtin (<i>Global Trade Item Number</i> ⁹)

1.9 ⁹ This must be padded with 0's to the full 14 characters. See section 1.3 Global Trade Item Numbers - GTINs

Global Trade Item Numbers are used extensively to identify items. This field MUST contain a 14 digit number, so a 'filler 0' must be added to the front of the number if they are 8, 12, or 13 digit GTINs. For example, 9312345678901 becomes 09312345678901. This does not change the number at all, it is simply a non-significant digit added so this will pass schema validation.

Optional Elements

(Relative to crossDockDespatchAdviceExtension→shipmentPerUltimateConsignee→despatchAdviceLogisticsUnitLineItem→despatchAdviceItemContainmentLineItem)

- requestedItemIdentification→gtin (*Global Trade Item Number¹⁰*)
- productCertification (*DetailLevelReferenceType*)
- promotionalDeal (*DetailLevelReferenceType*)
- customer (*DetailLevelReferenceType*)
- specification (*DetailLevelReferenceType*)
- deliveryNote (*DetailLevelReferenceType*)
- consignment (*DetailLevelReferenceType*)
- contract (*DetailLevelReferenceType*)
- purchaseOrder (*DocumentOrDocumentLineReferenceType*)
- purchaseConditions (*DocumentOrDocumentLineReferenceType*)
- listForEachItem (*SpecifItemDataType*)
- extendedAttributes (*TransactionalItemDataType*)
- requestedQuantity (*QuantityType*)
- freeGoodsQuantity (*QuantityType*)
- quantityVariance (*QuantityVarianceType*)
- countryOfLastProcessing (*ISO3166_1CodeType*)
- countryOfOrigin (*ISO3166_1CodeType*)
- locationOfLastProcessing (*LocationInformationType*)
- locationOfOrigin (*LocationInformationType*)

1.10 ¹⁰ This must be padded with 0's to the full 14 characters. See section 1.3 Global Trade Item Numbers - GTINs

Global Trade Item Numbers are used extensively to identify items. This field MUST contain a 14 digit number, so a 'filler 0' must be added to the front of the number if they are 8, 12, or 13 digit GTINs. For example, 9312345678901 becomes 09312345678901. This does not change the number at all, it is simply a non-significant digit added so this will pass schema validation.

5.12 Package Identification

<i>AS5023 Reference</i>	<i>Section:</i>	<i>Group:</i>	<i>Element:</i> Package Identification
<i>Description/Comments</i>			
<i>GS1 XML Path</i>	crossDockDespatchAdviceExtension→shipmentPerUltimateConsignee→despatchAdviceLogisticUnitLineItem→logisticUnitIdentification→serialShipmentContainerCode→serialShippingContainerCode		
<i>Basic Type</i>	Element		
<i>Comments</i>			
<i>Schema Constraints</i>	<i>Mandatory:</i> Yes		
	<i>Data Type:</i> string		
	<i>Cardinality:</i> 1..1		
	Mandatory if Cross Dock Despatch Advice Extension is used.		
<i>Co-requisites</i>	None		
<i>Optional Elements</i>	(Relative to crossDockDespatchAdviceExtension→shipmentPerUltimateConsignee→despatchAdviceLogisticsUnitLineItem→logisticUnitIdentification) →additionalLogisticUnitIdentification→logisticUnitIdentification (<i>string</i>)		

5.12.1 Additional Package Identification

<i>AS5023 Reference</i>	<i>Section:</i>	<i>Group:</i>	<i>Element:</i> Additional Package Identification
<i>Description/Comments</i>			
<i>GS1 XML Path</i>	crossDockDespatchAdviceExtension→shipmentPerUltimateConsignee→despatchAdviceLogisticUnitLineItem→logisticUnitIdentification→additionalLogisticUnitIdentification→logisticUnitIdentification		
<i>Basic Type</i>	Element		
<i>Comments</i>	Optional addition to the SSCC		
<i>Schema Constraints</i>	<i>Mandatory:</i> No		
	<i>Data Type:</i> string		

	Cardinality: 1..1
<i>Co-requisites</i>	crossDockDespatchAdviceExtension→shipmentPerUltimateConsignee→despatchAdviceLogisticUnitLineItem→logisticUnitIdentification→serialShipmentContainerCode→serialShippingContainerCode
<i>Optional Elements</i>	

5.13 Line Number

<i>AS5023 Reference</i>	<i>Section:</i> Detail	<i>Group:</i> Line Item	<i>Element:</i> Line number
<i>Description/Comments</i>			
<i>GS1 XML Path</i>	crossDockDespatchAdviceExtension→shipmentPerUltimateConsignee→despatchAdviceLogisticsUnitLineItem→despatchAdviceItemContainmentLineItem→number		
<i>Basic Type</i>	Attribute		
<i>Comments</i>	Line numbers are used if the Despatch Advice is written from the item perspective i.e. using the <i>despatchAdviceItemContainmentLineItem</i> element. It may also be written from the items within a package perspective which shows the hierarchical relationship between all the packages in the shipment i.e. using the <i>despatchAdviceLogisticUnitLineItem</i> element containing the <i>despatchAdviceItemContainmentLineItem</i> element. In this case the line numbers refer to the individual items within the package.		
<i>Schema Constraints</i>	<i>Mandatory:</i> No		
	<i>Data Type:</i> Non-negative Integer		
	<i>Cardinality:</i> 1..1		

	This is mandatory if <i>crossDockDespatchAdviceExtension→shipmentPerUltimateConsignee→despatchAdviceLogisticsUnitLineItem→despatchAdviceItemContainmentLineItem</i> is used.
<i>Co-requisites</i>	(Relative to <i>despatchAdviceLogisticsUnitLineItem→crossDockDespatchAdviceExtension→shipmentPerUltimateConsignee→despatchAdviceLogisticsUnitLineItem→despatchAdviceItemContainmentLineItem</i>) →containedItemIdentification→gtin (<i>Global Trade Item Number</i> ¹¹) →quantityContained→unitOfMeasure→measurementUnitCodeValue (<i>string</i>) →quantityContained→value (<i>float</i>)

1.11 ¹¹ This must be padded with 0's to the full 14 characters. See section 1.3 Global Trade Item Numbers - GTINs

Global Trade Item Numbers are used extensively to identify items. This field MUST contain a 14 digit number, so a 'filler 0' must be added to the front of the number if they are 8, 12, or 13 digit GTINs. For example, 9312345678901 becomes 09312345678901. This does not change the number at all, it is simply a non-significant digit added so this will pass schema validation.

Optional Elements

(Relative to crossDockDespatchAdviceExtension→shipmentPerUltimateConsignee→despatchAdviceLogisticsUnitLineItem→despatchAdviceItemContainmentLineItem)

- requestedItemIdentification→gtin (*Global Trade Item Number¹²*)
- productCertification (*DetailLevelReferenceType*)
- promotionalDeal (*DetailLevelReferenceType*)
- customer (*DetailLevelReferenceType*)
- specification (*DetailLevelReferenceType*)
- deliveryNote (*DetailLevelReferenceType*)
- consignment (*DetailLevelReferenceType*)
- contract (*DetailLevelReferenceType*)
- purchaseOrder (*DocumentOrDocumentLineReferenceType*)
- purchaseConditions (*DocumentOrDocumentLineReferenceType*)
- listForEachItem (*SpecifItemDataType*)
- extendedAttributes (*TransactionalItemDataType*)
- requestedQuantity (*QuantityType*)
- freeGoodsQuantity (*QuantityType*)
- quantityVariance (*QuantityVarianceType*)
- countryOfLastProcessing (*ISO3166_1CodeType*)
- countryOfOrigin (*ISO3166_1CodeType*)
- locationOfLastProcessing (*LocationInformationType*)
- locationOfOrigin (*LocationInformationType*)

1.12 ¹² This must be padded with 0's to the full 14 characters. See section 1.3 Global Trade Item Numbers - GTINs

Global Trade Item Numbers are used extensively to identify items. This field MUST contain a 14 digit number, so a 'filler 0' must be added to the front of the number if they are 8, 12, or 13 digit GTINs. For example, 9312345678901 becomes 09312345678901. This does not change the number at all, it is simply a non-significant digit added so this will pass schema validation.

5.14 Unique Product Identifier

<i>AS5023 Reference</i>	<i>Section:</i>	<i>Group:</i> Product Identifier	<i>Element:</i> Unique product identifier
<i>Description/Comments</i>			
<i>GS1 XML Path</i>	(Relative to crossDockDespatchAdviceExtension→shipmentPerUltimateConsignee→despatchAdviceLogisticUnitLineItem→despatchAdviceItemContainmentLineItem) →containedItemIdentification→gtin		
<i>Basic Type</i>	Element		
<i>Comments</i>			
<i>Schema Constraints</i>	Mandatory: No		
	Data Type: Global Trade Item Number ¹³		
	Cardinality: 1..1		
	This is mandatory if crossDockDespatchAdviceExtension→shipmentPerUltimateConsignee→despatchAdviceItemContainmentLineItem is used.		

1.13 ¹³ This must be padded with 0's to the full 14 characters. See section 1.3 Global Trade Item Numbers - GTINs

Global Trade Item Numbers are used extensively to identify items. This field MUST contain a 14 digit number, so a 'filler 0' must be added to the front of the number if they are 8, 12, or 13 digit GTINs. For example, 9312345678901 becomes 09312345678901. This does not change the number at all, it is simply a non-significant digit added so this will pass schema validation.

Co-requisites

(Relative to
crossDockDespatchAdviceExtension→shipmentPerUltimateConsignee→despatchAdviceLogisticUnitLineItem→despatchAdviceItemContainmentLineItem)

→number (*Non-negative Number*)

→quantityContained→unitOfMeasure→measurementUnitCodeValue (*string*)

→quantityContained→value (*float*)

Optional Elements

(Relative to
 crossDockDespatchAdviceExtension→shipmentPerUltimateConsignee→despatchAdviceLogisticUnitLineItem→despatchAdviceItemContainmentLineItem)

- requestedItemIdentification→gtin (*Global Trade Item Number*¹⁴)
- productCertification (*DetailLevelReferenceType*)
- promotionalDeal (*DetailLevelReferenceType*)
- customer (*DetailLevelReferenceType*)
- specification (*DetailLevelReferenceType*)
- deliveryNote (*DetailLevelReferenceType*)
- consignment (*DetailLevelReferenceType*)
- contract (*DetailLevelReferenceType*)
- purchaseOrder (*DocumentOrDocumentLineReferenceType*)
- purchaseConditions (*DocumentOrDocumentLineReferenceType*)
- listForEachItem (*SpecifItemDataType*)
- extendedAttributes (*TransactionalItemDataType*)
- requestedQuantity (*QuantityType*)
- freeGoodsQuantity (*QuantityType*)
- quantityVariance (*QuantityVarianceType*)
- countryOfLastProcessing (*ISO3166_1CodeType*)
- countryOfOrigin (*ISO3166_1CodeType*)
- locationOfLastProcessing (*LocationInformationType*)
- locationOfOrigin (*LocationInformationType*)

1.14 ¹⁴ This must be padded with 0's to the full 14 characters. See section 1.3 Global Trade Item Numbers - GTINs

Global Trade Item Numbers are used extensively to identify items. This field MUST contain a 14 digit number, so a 'filler 0' must be added to the front of the number if they are 8, 12, or 13 digit GTINs. For example, 9312345678901 becomes 09312345678901. This does not change the number at all, it is simply a non-significant digit added so this will pass schema validation.

5.15 Requested Item Identifier

AS5023 Reference	Section:	Group:	Element:
Description/Comments	Related to Unique Product Identifier		
GS1 XML Path	(Relative to crossDockDespatchAdviceExtension→shipmentPerUltimateConsignee→despatchAdviceLogisticUnitLineItem→despatchAdviceItemContainmentLineItem) →requestedItemIdentification→gtin		
Basic Type	Element		
Comments			
Schema Constraints	Mandatory: No		
	Data Type: Global Trade Item Number ¹⁵		
	Cardinality: 1..1		
	This item must be used if the item supplied is different to the one requested.		
Co-requisites	(Relative to crossDockDespatchAdviceExtension→shipmentPerUltimateConsignee→despatchAdviceLogisticUnitLineItem→despatchAdviceItemContainmentLineItem) →number (Non-negative Number) →quantityContained→unitOfMeasure→measurementUnitCodeValue (string) →quantityContained→value (float) →containedItemIdentification→gtin (Global Trade Item Number ¹⁶)		

1.15¹⁵ This must be padded with 0's to the full 14 characters. See section 1.3 Global Trade Item Numbers - GTINs

Global Trade Item Numbers are used extensively to identify items. This field MUST contain a 14 digit number, so a 'filler 0' must be added to the front of the number if they are 8, 12, or 13 digit GTINs. For example, 9312345678901 becomes 09312345678901. This does not change the number at all, it is simply a non-significant digit added so this will pass schema validation.

Optional Elements	<p>(Relative to crossDockDespatchAdviceExtension→shipmentPerUltimateConsignee→despatchAdviceLogisticUnitLineItem→despatchAdviceItemCont ainmentLineItem)</p> <ul style="list-style-type: none"> →productCertification (<i>DetailLevelReferenceType</i>) →promotionalDeal (<i>DetailLevelReferenceType</i>) →customer (<i>DetailLevelReferenceType</i>) →specification (<i>DetailLevelReferenceType</i>) →deliveryNote (<i>DetailLevelReferenceType</i>) →consignment (<i>DetailLevelReferenceType</i>) →contract (<i>DetailLevelReferenceType</i>) →purchaseOrder (<i>DocumentOrDocumentLineReferenceType</i>) →purchaseConditions (<i>DocumentOrDocumentLineReferenceType</i>) →listForEachItem (<i>SpecifItemDataType</i>) →extendedAttributes (<i>TransactionalItemDataType</i>) →requestedQuantity (<i>QuantityType</i>) →freeGoodsQuantity (<i>QuantityType</i>) →quantityVariance (<i>QuantityVarianceType</i>) →countryOfLastProcessing (<i>ISO3166_1CodeType</i>) →countryOfOrigin (<i>ISO3166_1CodeType</i>) →locationOfLastProcessing (<i>LocationInformationType</i>) →locationOfOrigin (<i>LocationInformationType</i>)
--------------------------	---

1.16 ¹⁶ This must be padded with 0's to the full 14 characters. See section 1.3 Global Trade Item Numbers - GTINs

Global Trade Item Numbers are used extensively to identify items. This field MUST contain a 14 digit number, so a 'filler 0' must be added to the front of the number if they are 8, 12, or 13 digit GTINs. For example, 9312345678901 becomes 09312345678901. This does not change the number at all, it is simply a non-significant digit added so this will pass schema validation.

5.16 Additional Product Information

<i>AS5023 Reference</i>	<i>Section:</i>	<i>Group:</i> Product Identifier	<i>Element:</i> Additional product information
<i>Description/Comments</i>			
<i>GS1 XML Path</i>	(Relative to crossDockDespatchAdviceExtension→shipmentPerUltimateConsignee→despatchAdviceLogisticUnitLineItem→despatchAdviceItemContainmentLineItem) →containedItemIdentification→additionalTradeItemIdentification→additionalTradeItemIdentificationValue		
<i>Basic Type</i>	Element		
<i>Comments</i>			
<i>Schema Constraints</i>	<i>Mandatory:</i> No		
	<i>Data Type:</i> string		
	<i>Cardinality:</i> 1..1		
<i>Co-requisites</i>	(Relative to crossDockDespatchAdviceExtension→shipmentPerUltimateConsignee→despatchAdviceLogisticUnitLineItem→despatchAdviceItemContainmentLineItem) containedItemIdentification→additionalTradeItemIdentificationType		
<i>Optional Elements</i>	None		

5.16.1 Additional Product Information Type

<i>AS5023 Reference</i>	<i>Section:</i>	<i>Group:</i> Product Identifier	<i>Element:</i> Additional product information
<i>Description/Comments</i>			
<i>GS1 XML Path</i>	(Relative to crossDockDespatchAdviceExtension→shipmentPerUltimateConsignee→despatchAdviceLogisticUnitLineItem→despatchAdviceItemContainmentLineItem) →containedItemIdentification→additionalTradeItemIdentification→additionalTradeItemIdentificationType		
<i>Basic Type</i>	Element		
<i>Comments</i>			

<i>Schema Constraints</i>	<i>Mandatory:</i> No
	<i>Data Type:</i> list
	<i>Cardinality:</i> 1..1
	Allowable values are: BUYER_ASSIGNED INDUSTRY_ASSIGNED SUPPLIER_ASSIGNED
<i>Co-requisites</i>	(Relative to crossDockDespatchAdviceExtension→shipmentPerUltimateConsignee→despatchAdviceLogisticUnitLineItem→despatchAdviceItemContainmentLineItem) containedItemIdentification→additionalTradeItemIdentificationValue
<i>Optional Elements</i>	None

5.17 Ordered Quantity

<i>AS5023 Reference</i>	<i>Section:</i>	<i>Group:</i> Item Detail	<i>Element:</i> Quantities
<i>Description/Comments</i>			
<i>GS1 XML Path</i>	(Relative to crossDockDespatchAdviceExtension→shipmentPerUltimateConsignee→despatchAdviceLogisticUnitLineItem→despatchAdviceItemContainmentLineItem) →requestedQuantity→value		
<i>Basic Type</i>	Element		
<i>Comments</i>			
<i>Schema Constraints</i>	<i>Mandatory:</i> No		
	<i>Data Type:</i> float		
	<i>Cardinality:</i> 1..1		
<i>Co-requisites</i>	None		

<i>Optional Elements</i>	(Relative to crossDockDespatchAdviceExtension→shipmentPerUltimateConsignee→despatchAdviceLogisticUnitLineItem→despatchAdviceItemCont ainmentLineItem) →requestedQuantity→unitOfMeasure→measurementUnitCodeValue (<i>string</i>)
--------------------------	--

5.18 Batch Number

<i>AS5023 Reference</i>	<i>Section:</i>	<i>Group:</i>	<i>Element:</i>
<i>Description/Comments</i>			
<i>GS1 XML Path</i>	(Relative to crossDockDespatchAdviceExtension→shipmentPerUltimateConsignee→despatchAdviceLogisticUnitLineItem→despatchAdviceItemCont ainmentLineItem) →extendedAttributes→batchNumber		
<i>Basic Type</i>	Element		
<i>Comments</i>			
<i>Schema Constraints</i>	Mandatory: No		
	Data Type: string		
	Cardinality: 0..1		
<i>Co-requisites</i>	None		

Optional Elements	(Relative to crossDockDespatchAdviceExtension→shipmentPerUltimateConsignee→despatchAdviceLogisticUnitLineItem→despatchAdviceItemCont ainmentLineItem) availableForSaleDate (date) bestBeforeDate (date) countryOfOrigin (list) itemExpirationDate (date) lotNumber (string) packagingDate (date) productionDate (date) productQualityIndication (QuantityType) sellByDate (date) shelfLife (string) transactionalItemWeight (UnitMeasurementType)
--------------------------	--

5.19 Serial Numbers

AS5023 Reference	Section:	Group:	Element:
Description/Comments			
GS1 XML Path	(Relative to crossDockDespatchAdviceExtension→shipmentPerUltimateConsignee→despatchAdviceLogisticUnitLineItem→despatchAdviceItemCont ainmentLineItem) →listForEachItem→serialNumber		
Basic Type			
Comments			
Schema Constraints	Mandatory: No		
	Data Type: string		
	Cardinality: 1..1		
	Cardinality of <i>listForEachItem</i> is 0..*		

<i>Co-requisites</i>	<p>(Relative to crossDockDespatchAdviceExtension→shipmentPerUltimateConsignee→despatchAdviceLogisticUnitLineItem→despatchAdviceItemContainmentLineItem)</p> <p>→number (<i>Attribute, Non-negative Integer</i>)</p> <p>→quantityContained→value (<i>float</i>)</p>
<i>Optional Elements</i>	<p>(Relative to crossDockDespatchAdviceExtension→shipmentPerUltimateConsignee→despatchAdviceLogisticUnitLineItem→despatchAdviceItemContainmentLineItem)</p> <p>→requestedItemIdentification (<i>TradeItemIdentificationType</i>)</p> <p>→productCertification (<i>DetailLevelReferenceType</i>)</p> <p>→promotionalDeal (<i>DetailLevelReferenceType</i>)</p> <p>→customer (<i>DetailLevelReferenceType</i>)</p> <p>→specification (<i>DetailLevelReferenceType</i>)</p> <p>→deliveryNote (<i>DetailLevelReferenceType</i>)</p> <p>→consignment (<i>DetailLevelReferenceType</i>)</p> <p>→contract (<i>DetailLevelReferenceType</i>)</p> <p>→purchaseOrder (<i>DocumentOrDocumentLineReferenceType</i>)</p> <p>→purchaseConditions (<i>DocumentOrDocumentLineReferenceType</i>)</p> <p>→extendedAttributes (<i>TransactionalItemDataType</i>)</p> <p>→requestedQuantity (<i>QuantityType</i>)</p> <p>→freeGoodsQuantity (<i>QuantityType</i>)</p> <p>→quantityVariance (<i>QuantityVarianceType</i>)</p> <p>→countryOfLastProcessing (<i>ISO3166_1CodeType</i>)</p> <p>→countryOfOrigin (<i>ISO3166_1CodeType</i>)</p> <p>→locationOfLastProcessing (<i>LocationInformationType</i>)</p> <p>→locationOfOrigin (<i>LocationInformationType</i>)</p>

5.20 Expiry Date

Note: AS5023 identifies an Estimated Delivery Date as a data element at the item level. Delivery Dates apply to the whole shipment and so are held at the header level.

<i>AS5023 Reference</i>	<i>Section:</i>	<i>Group:</i>	<i>Element: Dates</i>
<i>Description/Comments</i>	The dates identified in AS5023 are: estimated delivery date; expiry date; best before date.		
<i>GS1 XML Path</i>	(Relative to crossDockDespatchAdviceExtension→shipmentPerUltimateConsignee→despatchAdviceLogisticUnitLineItem→despatchAdviceItemContainmentLineItem) →extendedAttributes→itemExpirationDate		
<i>Basic Type</i>	Element		
<i>Comments</i>	If there are multiple Expiry Dates for the item being despatched, then multiple <i>crossDockDespatchAdviceExtension→shipmentPerUltimateConsignee→despatchAdviceItemContainmentLineItem</i> elements must be used. The strategy for processing multiple Expiry Dates will be linked to the strategies for Best Before Dates, Batch Numbers and Serial Numbers.		
<i>Schema Constraints</i>	<i>Mandatory:</i> No		
	<i>Data Type:</i> date		
	<i>Cardinality:</i> 0..1		
<i>Co-requisites</i>	None		

Optional Elements	(Relative to crossDockDespatchAdviceExtension→shipmentPerUltimateConsignee→despatchAdviceLogisticUnitLineItem→despatchAdviceItemContainmentLineItem) availableForSaleDate (date) batchNumber (string) bestBeforeDate (date) countryOfOrigin (list) lotNumber (string) packagingDate (date) productionDate (date) productQualityIndication (QuantityType) sellByDate (date) shelfLife (string) transactionalItemWeight (UnitMeasurementType)
--------------------------	---

5.21 Best Before Dates

AS5023 Reference	Section:	Group:	Element: Dates
Description/Comments	The dates identified in AS5023 are: estimated delivery date; expiry date; best before date.		
GS1 XML Path	(Relative to crossDockDespatchAdviceExtension→shipmentPerUltimateConsignee→despatchAdviceLogisticUnitLineItem→despatchAdviceItemContainmentLineItem) →extendedAttributes→bestBeforeDate		
Basic Type	Element		
Comments	If there are multiple Best Before Dates for the item being despatched, then multiple <i>despatchAdviceItemContainmentLineItem</i> elements must be used. The strategy for processing multiple Best Before Dates will be linked to the strategies for Expiry Dates, Batch Numbers and Serial Numbers.		
Schema Constraints	Mandatory: No		
	Data Type: date		
	Cardinality: 0..1		

<i>Co-requisites</i>	None
<i>Optional Elements</i>	(Relative to crossDockDespatchAdviceExtension→shipmentPerUltimateConsignee→despatchAdviceLogisticUnitLineItem→despatchAdviceItemCont ainmentLineItem) availableForSaleDate (date) batchNumber (string) countryOfOrigin (list) itemExpirationDate (date) lotNumber (string) packagingDate (date) productionDate (date) productQualityIndication (QuantityType) sellByDate (date) shelfLife (string) transactionalItemWeight (UnitMeasurementType)

5.22 Order Line Number

<i>AS5023 Reference</i>	<i>Section:</i>	<i>Group:</i>	<i>Element:</i> Order Line Number
<i>Description/Comments</i>	This is a reference to the line number in the original Purchase Order.		
<i>GS1 XML Path</i>	(Relative to crossDockDespatchAdviceExtension→shipmentPerUltimateConsignee→despatchAdviceLogisticUnitLineItem→despatchAdviceItemContai nmentLineItem→purchaseOrder) →documentLineReference→number		
<i>Basic Type</i>	Element		
<i>Comments</i>			
<i>Schema Constraints</i>	Mandatory: No		
	Data Type: Non-negative Integer		
	Cardinality: 1..1		

<i>Co-requisites</i>	None
<i>Optional Elements</i>	(Relative to crossDockDespatchAdviceExtension→shipmentPerUltimateConsignee→despatchAdviceLogisticUnitLineItem→despatchAdviceItemContainmentLineItem→purchaseOrder) →documentReference→uniqueCreatorIdentification (<i>string</i>) →documentReference→contentOwner→gln (<i>Global Location Number</i>) →documentReference→contentOwner→additionalPartyIdentificationValue (<i>string</i>) →documentReference→contentOwner→additionalPartyIdentificationType (<i>list</i>)

5.22.1 Order Number

<i>AS5023 Reference</i>	<i>Section:</i>	<i>Group:</i>	<i>Element:</i> Order Line Number
<i>Description/Comments</i>	Related to Order Line Number		
<i>GS1 XML Path</i>	(Relative to crossDockDespatchAdviceExtension→shipmentPerUltimateConsignee→despatchAdviceLogisticUnitLineItem→despatchAdviceItemContainmentLineItem→purchaseOrder) →documentLineReference→documentReference→ uniqueCreatorIdentification		
<i>Basic Type</i>			
<i>Comments</i>			
<i>Schema Constraints</i>	<i>Mandatory:</i> No		
	<i>Data Type:</i> string		
	<i>Cardinality:</i> 1..1		
	Cardinality of documentReference is 0..1		
<i>Co-requisites</i>	(Relative to crossDockDespatchAdviceExtension→shipmentPerUltimateConsignee→despatchAdviceLogisticUnitLineItem→despatchAdviceItemContainmentLineItem→purchaseOrder) →number (<i>Non-negative Integer</i>) →documentReference→creationDateTime (<i>Attribute, dateTime</i>) →documentReference→contentOwner→gln (<i>Global Location Number</i>)		

Optional Elements	(Relative to crossDockDespatchAdviceExtension→shipmentPerUltimateConsignee→despatchAdviceLogisticUnitLineItem→despatchAdviceItemContainmentLineItem) →documentReference→contentOwner→additionalPartyIdentificationValue (<i>string</i>) →documentReference→contentOwner→additionalPartyIdentificationType (<i>list</i>)
--------------------------	--

5.22.2 Order Date

AS5023 Reference	Section:	Group:	Element:
Description/Comments	Related to Order Line Number		
GS1 XML Path	(Relative to crossDockDespatchAdviceExtension→shipmentPerUltimateConsignee→despatchAdviceLogisticUnitLineItem→despatchAdviceItemContainmentLineItem→purchaseOrder) →documentReference→creationDateTime		
Basic Type	Attribute		
Comments			
Schema Constraints	Mandatory: No		
	Data Type: dateTime		
	Cardinality: 0..1		
Co-requisites	(Relative to crossDockDespatchAdviceExtension→shipmentPerUltimateConsignee→despatchAdviceLogisticUnitLineItem→despatchAdviceItemContainmentLineItem→purchaseOrder) →number (<i>Non-negative Integer</i>) →documentReference→uniqueCreatorIdentification (<i>string</i>) →documentReference→contentOwner→gln (<i>Global Location Number</i>)		
Optional Elements	(Relative to crossDockDespatchAdviceExtension→shipmentPerUltimateConsignee→despatchAdviceLogisticUnitLineItem→despatchAdviceItemContainmentLineItem) →documentReference→contentOwner→additionalPartyIdentificationValue (<i>string</i>) →documentReference→contentOwner→additionalPartyIdentificationType (<i>list</i>)		

5.22.3 Order Creator

<i>AS5023 Reference</i>	<i>Section:</i>	<i>Group:</i>	<i>Element:</i>
<i>Description/Comments</i>	Related to Order Line Number		
<i>GS1 XML Path</i>	(Relative to crossDockDespatchAdviceExtension→shipmentPerUltimateConsignee→ despatchAdviceLogisticUnitLineItem→ despatchAdviceItemContainmentLineItem→purchaseOrder) →documentReference→contentOwner→gln		
<i>Basic Type</i>	Element		
<i>Comments</i>			
<i>Schema Constraints</i>	Mandatory: No		
	Data Type: Global Location Number		
	Cardinality: 1..1		
<i>Co-requisites</i>	(Relative to crossDockDespatchAdviceExtension→shipmentPerUltimateConsignee→ despatchAdviceLogisticUnitLineItem→ despatchAdviceItemContainmentLineItem→purchaseOrder) →number (Non-negative Integer) →documentReference→creationDateTime (Attribute, dateTime) →documentReference→contentOwner→gln (Global Location Number)		
<i>Optional Elements</i>	(Relative to crossDockDespatchAdviceExtension→shipmentPerUltimateConsignee→ despatchAdviceLogisticUnitLineItem→ despatchAdviceItemContainmentLineItem→purchaseOrder) →documentReference→contentOwner→additionalPartyIdentificationValue (string) →documentReference→contentOwner→additionalPartyIdentificationType (list)		

5.23 Quantity Variances

<i>AS5023 Reference</i>	<i>Section:</i>	<i>Group: Quantity Variances</i>	<i>Element: Quantity Variances</i>
<i>Description/Comments</i>			
<i>GS1 XML Path</i>	(Relative to crossDockDespatchAdviceExtension→shipmentPerUltimateConsignee→ despatchAdviceLogisticUnitLineItem→despatchAdviceItemContainmentLineItem) →quantityVariance→varianceQuantity→value		
<i>Basic Type</i>	Element		

<i>Comments</i>	If a particular item occurs multiple times, e.g. it has multiple Batch Numbers or occurs in multiple packages, then the variances should be recorded with the first occurrence only. despatchAdviceItemContainmentLineItem also occurs as a child element of despatchLogisticUnitLineItem, and the same rules apply.
<i>Schema Constraints</i>	Mandatory: No
	Data Type: float
	Cardinality: 1..1
	The cardinality of quantityVariance is 0..* so multiple types of variances can be recorded.
<i>Co-requisites</i>	(Relative to crossDockDespatchAdviceExtension→shipmentPerUltimateConsignee→despatchAdviceLogisticUnitLineItem→despatchAdviceItemContainmentLineItem) →changeReason (list) →deliveryDateVariance (date)
<i>Optional Elements</i>	(Relative to crossDockDespatchAdviceExtension→shipmentPerUltimateConsignee→despatchAdviceLogisticUnitLineItem→despatchAdviceItemContainmentLineItem) →varianceQuantity→unitOfMeasure→measurementUnitCodeValue (string)

5.23.1 Variance Reason

<i>AS5023 Reference</i>	Section:	Group: Quantity Variances	Element: Quantity Variances
<i>Description/Comments</i>			
<i>GS1 XML Path</i>	(Relative to crossDockDespatchAdviceExtension→shipmentPerUltimateConsignee→despatchAdviceLogisticUnitLineItem→despatchAdviceItemContainmentLineItem) →quantityVariance→changeReason		
<i>Basic Type</i>	Element		
<i>Comments</i>			
<i>Schema Constraints</i>	Mandatory: No		
	Data Type: list		
	Cardinality: 1..1		
	The cardinality of quantityVariance is 0..* so multiple types of variances can be recorded.		

	Allowable values are: ARTICLE_CODE_UNKNOWN	DAMAGED ITEM_NOT_ORDERED	OUT_OF_INVENTORY PACK_DIFFERENCE
<i>Co-requisites</i>	(Relative to crossDockDespatchAdviceExtension→shipmentPerUltimateConsignee→despatchAdviceLogisticUnitLineItem→despatchAdviceItemContainmentLineItem→quantityVariance) → varianceQuantity→value (float) →deliveryDateVariance (date)		
<i>Optional Elements</i>	(Relative to crossDockDespatchAdviceExtension→shipmentPerUltimateConsignee→despatchAdviceLogisticUnitLineItem→despatchAdviceItemContainmentLineItem→quantityVariance) →varianceQuantity→unitOfMeasure→easurementUnitCodeValue (string)		

5.23.2 Delivery Date: Variances

<i>AS5023 Reference</i>	<i>Section:</i>	<i>Group:</i> Quantity variance	<i>Element:</i> Delivery date for variances
<i>Description/Comments</i>			
<i>GS1 XML Path</i>	(Relative to crossDockDespatchAdviceExtension→shipmentPerUltimateConsignee→despatchAdviceLogisticUnitLineItem→despatchAdviceItemContainmentLineItem) →quantityVariance→deliveryDateVariance		
<i>Basic Type</i>	Attribute		
<i>Comments</i>			
<i>Schema Constraints</i>	<i>Mandatory:</i> No		
	<i>Data Type:</i> date		
	<i>Cardinality:</i> 0..1		
	The cardinality of quantityVariance is 0..* so multiple types of variances can be recorded.		
<i>Co-requisites</i>	(Relative to crossDockDespatchAdviceExtension→shipmentPerUltimateConsignee→despatchAdviceLogisticUnitLineItem→despatchAdviceItemContainmentLineItem→quantityVariance) → varianceQuantity →value (float) →changeReason (list)		
<i>Optional Elements</i>	(Relative to crossDockDespatchAdviceExtension→shipmentPerUltimateConsignee→despatchAdviceLogisticUnitLineItem→despatchAdviceItemContainmentLineItem→quantityVariance) →varianceQuantity→unitOfMeasure→measurementUnitCodeValue (string)		

6 References

This document is based on the following documents

- [SA2003] Standards Australia 2003, Health Supply Chain Messaging Part 4: Dataset content – Secondary transactions, Standards Australia.
- [GS1-2009] GS1 2009, Business Message Standard (BMS) Despatch Advice, BMS Release: 2.5, GS1.
- [GS1-2009] GS1 2009, Business Message Standard (BMS) Cross Dock Despatch Advice extension, BMS Release: 2.5, GS1.
- [SBDH2007] GS1 2007, Standard Business Document Header (SBDH) Technical Implementation Guide, Release: 1.3, GS1.
- [EPTA2007] NEHTA 2007, E-Procurement Technical Architecture; Version 1.0, NEHTA