



Technical Service Specification

PCEHR View Service

Version 1.4 — 6 September 2012

Final

National E-Health Transition Authority Ltd

Level 25

56 Pitt Street

Sydney, NSW, 2000

Australia.

www.nehta.gov.au**Disclaimer**

NEHTA makes the information and other material ('Information') in this document available in good faith but without any representation or warranty as to its accuracy or completeness. NEHTA cannot accept any responsibility for the consequences of any use of the Information. As the Information is of a general nature only, it is up to any person using or relying on the Information to ensure that it is accurate, complete and suitable for the circumstances of its use.

Document control

This document is maintained in electronic form. The current revision of this document is located on the NEHTA Web site and is uncontrolled in printed form. It is the responsibility of the user to verify that this copy is the latest revision.

Copyright © 2011-2012 NEHTA

This document contains information which is protected by copyright. All Rights Reserved. No part of this work may be reproduced or used in any form or by any means—graphic, electronic, or mechanical, including photocopying, recording, taping, or information storage and retrieval systems—without the permission of NEHTA. All copies of this document must include the copyright and other information contained on this page.

Document Information

Approver	PCEHR Design Authority
Owner	Head of PCEHR
Contact officer	PCEHR Design Team
Contributors	PCEHR - Standards, Foundation and Architecture (SFA) Team

Version History

Date	Version	Name	Comments/type of review
20 Dec 2011	1.0	NEHTA	Draft for Limited Release
18 Jan 2012	1.1	NEHTA	Update to reflect Tiger Team feedback
18 April 2012	1.2	NEHTA	<p>Added conformance points 31 to 40.</p> <p>Added Transmission Timestamp and Signature. Table 12 is now Timestamp Header. Table 13 is now Transmission Signature in SOAP Header</p> <p>Changed all XSD and WSDL files to latest version as of 11 April 2012.</p> <p>Added reference for ATS 5821</p> <p>Added reference W3C-XML-1.1</p> <p>PCEHR Header changed from section 4.1.1.3 to 4.1.1.5</p> <p>Updates related to document exchange:</p> <p>Section 3.2.5, Table 5 replaced with new Document Metadata to XDS.b Document Entry mapping</p> <p>Table 9 replaced with new Document Metadata to XDS.b Document Entry mapping</p> <p>VIEW-T 8 Changed documentid from document unique identifier to entryUUID.</p>
30 May 2012	1.3	NEHTA	<p>Added getRepresentativeListView operation</p> <p>Added conformance points 41 to 43</p>
6 Sept 2012	1.4	NEHTA	<p>Added getIndividualDetailsView operation</p> <p>Updated schemas and wsdl.</p>

This page is intentionally blank

Table of Contents

Preface	7
1 Introduction	9
1.1 Context	9
1.2 Scope of Document	9
1.2.1 In Scope	9
1.2.2 Out of Scope	10
1.3 Conformance Points	10
2 Standards and Technology Platform	11
3 Computational Viewpoint	12
3.1 Security	12
3.2 Service Interface Realisation	12
3.2.2 getConsolidatedView	13
3.2.3 getChangeHistoryView	14
3.2.4 getAuditView	18
3.2.5 registryStoredQuery	21
3.2.6 getRepresentativeListView	22
3.2.7 getIndividualDetailsView	26
4 Information Viewpoint	29
4.1 Information Data Type Realisation	29
4.1.1 Common Header	29
4.1.2 Output Message Data Types	33
4.1.3 Service Fault Data Types	33
5 Engineering Viewpoint	34
5.1 Discovery Services	34
Appendix A XSD and WSDL	35
Appendix B Acronyms and Terminology	93
Appendix C References	94

This page is intentionally blank

Preface

Purpose

The purpose of this document is to provide an implementable technical interface specification for the PCEHR View Service.

This document is intended for use by implementers of systems interfacing with the PCEHR System, such as Clinical Information Systems (CIS) and Conformant Portals.

This document must be read in conjunction with the *PCEHR View Service - Logical Service Specification* [[PCEHR-VS-LSS](#)] and the *PCEHR Document Exchange using the IHE XDS.b Platform Technical Service Specification* [[PCEHR-DE-TSS](#)].

Intended Audience

This specification is intended for:

- Developers and implementers of software products which seek to interact with the PCEHR System (normative)
- Jurisdictional eHealth programs (informative)
- The Australian Health Informatics Standards development community (informative).

This is a technical document which makes use of the UML2.3 standard [[UML2010](#)].

This document assumes that the reader is familiar with:

- UML and service-oriented architecture concepts and patterns
- *PCEHR Concept of Operations* [PCEHR-CON-OPS], September 2011 release
- RM-ODP (Reference Model of Open Distributed Processing) reference model [[RM-ODP](#)]
- XDS.b Cross Document Exchange [[XDS](#)].

Document Map

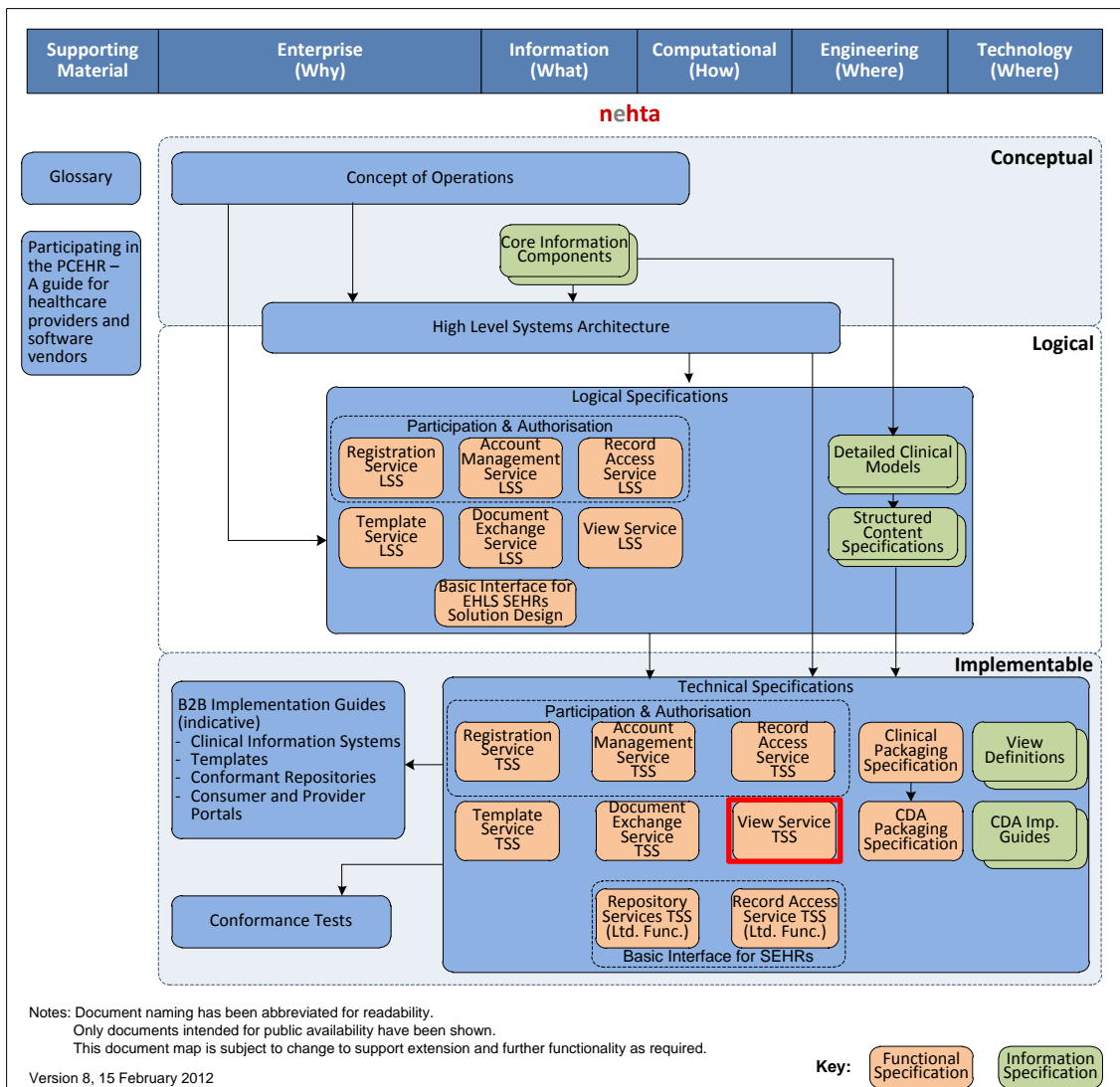


Figure 1 – Document map

Acronyms and Terminology

Please refer to [Appendix B](#) for definitions of the acronyms and terminology used within this document.

The keywords SHALL, SHALL NOT, SHOULD and SHOULD NOT in this document are to be interpreted as described in IETF's RFC 2119 [\[RFC2119\]](#).

References

Please refer to [Appendix C](#) for details of all references used within this document.

1 Introduction

1.1 Context

The *PCEHR View Service Logical Service Specification [PCEHR-VS-LSS]* presents a platform-independent specification of the PCEHR View Service. This Technical Service Specification presents an implementable interface that is supported by the PCEHR System and can be used by systems integrating to the PCEHR System.

Figure 2 shows how the set of operations addressed within this specification fit into the broader set of PCEHR functionality.

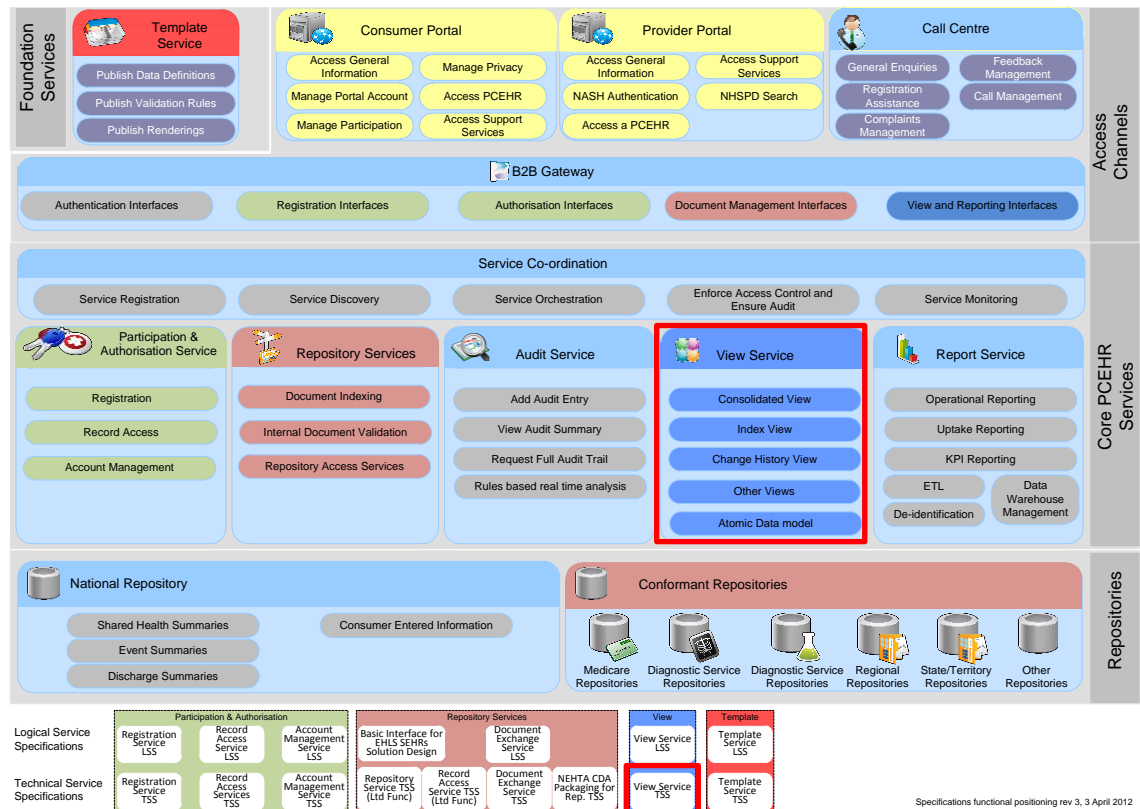


Figure 2 – PCEHR functions addressed

1.2 Scope of Document

This technical service specification binds the services, services interfaces and operations defined in the logical service specification onto a technology platform to a level of detail sufficient to support the implementation of external interfacing systems.

1.2.1 In Scope

The scope of this specification is to provide implementation level detail of the interfaces that external systems will use to interact with the PCEHR View Service.

The main scope of this specification can be summarised as:

- interface technical details (e.g. communication protocol, encoding)
- request and response message layouts
- message interactions
- error messages expected

- message transmission security
- operational details.

1.2.2 Out of Scope

This document does not cover any user interaction via an integrated system or specify any user interface. This document deals solely with machine-level interactions.

1.3 Conformance Points

This specification contains conformance points that identify normative requirements that are to be met by parties fulfilling the identified roles within the View Service.

Any capability required to meet a conformance point shall be considered part of the requirements to be met under this specification.

Conformance points are identified within this document by the means of the following notation:

VIEW-T 0	This is an example only. Conformance points SHALL be numbered and contain an identifier of VIEW-T which identifies them as being applicable to the View Service technical service specification.
-----------------	--

2 Standards and Technology Platform

A standards and technology platform is a collection of standards and technologies which may be used collectively to realise an implementation of one or more service interfaces specified within a logical service specification.

A single service interface within a logical specification must be realised fully by a single technology platform. However, each service interface specified within a logical specification may be realised wholly on different standards and technology platforms.

The technology platform for this specification is comprised of interaction through web service interfaces that conform to the relevant elements of the E-health Web Services Profile [ATS 5820-2010] and IHE cross enterprise document sharing-b [XDS] for document related operations. The technical specification for Document Exchange using XDS.b interface is defined in the *PCEHR Document Exchange using the IHE XDS.b Platform Technical Service Specification* [PCEHR-DE-TSS].

This specification depends on the following infrastructure services:

- Healthcare Identifiers (HI) Service for identification of healthcare provider organisations (HPI-O), healthcare provider individuals (HPI-I) and the subject of care (an individual identified by an IHI).
- The National Authentication Service for Health (NASH) for the provision of X.509 certificates used for signing and encryption.

Conformance points

The following conformance points define the application of the E-health web services profile [ATS 5820-2010] to service interactions:

VIEW-T 1	All implementations SHALL conform to the Web Services Base Profile from the Standards Australia E-health Web Services Profiles [ATS 5820-2010] for all web service invocations.
VIEW-T 2	All implementations SHALL implement the TLS Security Profile from the Standards Australia E-health Web Services Profiles [ATS 5820-2010] for all web service invocations.

3 Computational Viewpoint

The Computational Viewpoint addresses how the service interfaces and service operations defined in the logical service specification map onto the operation and transport specifications provided by the standards and technology platform.

3.1 Security

VIEW-T 3 *View Users* SHALL utilise NASH certificates for authentication when implementing TLS Security Profile from the Standards Australia E-health Web Services Profiles [ATS 5820-2010].

VIEW-T 31 The service invoker and service provider SHALL include a Transmission Signature (section 4.1.1.3) containing a signed attestation of elements contained within the SOAP message on all SOAP Request and Response messages, except where the response contains a SOAP Fault.

VIEW-T 32 The service invoker and service provider SHALL perform the signature using a certificate that asserts the same identity as that asserted in the TLS connection.

VIEW-T 33 The service provider SHOULD respond to an invalid [ATS 5820—2010] Transmission Signature by rejecting the entire message and respond with an error.

3.2 Service Interface Realisation

This section shows the service interfaces defined in the *PCEHR View Service - Logical Service Specification* [PCEHR-VS-LSS] and specifies how these are realised on the chosen technology platform.

The table below shows how the logical operations are realised in this technical service specification.

Table 1 - Logical to technical service specification mapping table

Logical Service Specification	Technical Service Specification
getConsolidatedView	getConsolidatedView
getChangeHistoryView	getChangeHistoryView
getAuditView	getAuditView
getDocumentList	registryStoredQuery (ITI-18)
getRepresentativeListView	getRepresentativeListView
getIndividualDetailsView	getIndividualDetailsView

Conformance points

VIEW-T 4 All implementations SHALL comply with applicable conformance points specified in the *PCEHR View Service - Logical Service Specification* [PCEHR-VS-LSS].

3.2.2 getConsolidatedView

This operation returns the PCEHR Individual Consolidated View to the healthcare provider.

3.2.2.1 Actors and roles

Role 1: getConsolidatedView Service Invoker

The *getConsolidateView Service Invoker* represents the party responsible for obtaining views from the PCEHR System. This role will typically be realised by a Conformant Portal, a Clinical Information System or a Contracted Service Provider.

Role 2: getConsolidatedView Service Provider

The *getConsolidatedView Service Provider* role represents the party responsible for supplying views of information relating to PCEHR stored information, so that it may be accessed by authorised *Service Invoker*. This role will be fulfilled by the National PCEHR System.

3.2.2.2 Pre-condition

Conformance points

VIEW-T 5	The <i>Service Invoker</i> SHALL set the PCEHR individual IHI to the <i>ihiNumber</i> in the PCEHR Header
-----------------	---

3.2.2.3 Post-conditions

Conformance points

VIEW-T 6	The <i>Service Provider</i> SHALL return a response of PCEHR consolidated view based on the <i>accessLevel</i> of the healthcare provider organisation.
-----------------	---

3.2.2.4 Interaction

Conformance points

VIEW-T 7	This operation SHALL be realised as a synchronous call between the <i>Service Invoker</i> and the <i>Service Provider</i> .
-----------------	---

3.2.2.5 Inputs, Outputs and Faults

This section details the data which is submitted to the service as an input, the response returned and the details of any faults. The data types are realised as XML Schema Definitions (XSD) within [Appendix A](#).

The Web Service Descriptions (WSDL) and service interfaces for this service are also defined in [Appendix A](#).

Input messageTable 2 - *getConsolidatedView* Input Message

Element Name	Type	Cardinality	Remarks
GetConsolidatedView		1..1	
/GetConsolidatedView			

Output MessageTable 3 - *getConsolidatedView* Output Message

Element Name	Type	Cardinality	Remarks
GetConsolidatedView Response		1..1	
ResponseStatus		1..1	
code	String	1..1	Status Code for the result of the transaction
description	String	1..1	Brief status description
details	String	0..1	Additional detail of the response
/ResponseStatus			
PCEHRRecord		0..1	
consolidatedView	Base64Binary	1..1	Consolidated View in base 64 string
/PCEHRRecord			
/GetConsolidatedView Response			

Service Fault

Please refer to section [4.1.3.1](#).

3.2.3 getChangeHistoryView

This operation returns the list of document metadata that has been registered to the PCEHR System for a specific document.

XDS.b AdhocQueryResponse object is used to represent the list of document metadata.

3.2.3.1 Actors and roles**Role 1: getChangeHistoryView Service Invoker**

The *getChangeHistoryView Service Invoker* represents the party responsible for obtaining views from the PCEHR System. This role will typically be realised by a Conformant Portal, a Clinical Information System or a Contract Service Provider.

Role 2: *getChangeHistoryView* Service Provider

The *getChangeHistoryView* Service Provider role represents the party responsible for supplying views of information relating to PCEHR stored information, so that it may be accessed by authorised users. This role will be fulfilled by the National PCEHR System.

3.2.3.2 Pre-condition

Conformance points

VIEW-T 8 The *Service Invoker* SHALL set the *documentId* to the document unique identifier, which the document change history information is requested.

3.2.3.3 Post-conditions

Conformance points

VIEW-T 9 The *Service Provider* SHALL return sets of document version history information for the specified document.

VIEW-T 10 The *Service Provider* SHALL NOT return sets of document change history information when the healthcare provider organisation does not have access to the specified document.

3.2.3.4 Interaction

Conformance points

VIEW-T 11 This operation SHALL be realised as a synchronous query between the *Service Invoker* and the *Service Provider*. The response SHALL be returned on the same software communication connection.

3.2.3.5 Inputs, Outputs and Faults

This section details the data which is submitted to the service as an input, the response returned and the details of any faults. The data types are realised as XSDs as defined in [Appendix A](#).

The WSDLs and service interfaces for this service are also defined in [Appendix A](#).

Input message

Table 4 - *getChangeHistoryView* Input Message

Element Name	Type	Cardinality	Remarks
getChangeHistoryView		1..1	
documentID	String	1..1	The identifier for a document
/getChangeHistoryView			

Output Message

This operation returns IHE XDS.b AdhocQueryResponse, which contains a list of document metadata from the document registry.

Please refer to appendix [A.1.1](#) for AdhocQueryResponse data type.

Table 5 is the mapping table for the DocumentMetadata realisation to the XDS.b document registry.

Table 5 - Logical Document Metadata Mapping Table

LSS Field	Description	XDS.b Field Name
Authoring Organisation	The identifier of the organisation that authored the document.	XDSDocumentEntry.authorInstitution
Authoring Individual	The identifier of the individual that authored the document.	XDSDocumentEntry.authorPerson
Document Type Code	A code relating to the type of document being retrieved.	XDSDocumentEntry.classCode
Document Type Display Name	A display friendly name for the document type.	XDSDocumentEntry.classCodeDisplayName
PCEHR Template Identifier	The identifier of the template this document conforms to.	XDSDocumentEntry.formatCode
Document ID	A unique object identifier relating to the document. This must be unique within the PCEHR System and must be equivalent to the identifier of the root CDA Document within the CDA Package.	XDSDocumentEntry.uniqueId
Title	An optional title for the given document.	XDSDocumentEntry.title
Document Creation Time	The time the document was created.	XDSDocumentEntry.creationTime
Service Start Time	The datetime the service being performed, which caused the document to be created, started.	XDSDocumentEntry.serviceStartTime
Service Stop Time	The datetime the service being performed, which caused the document to be created, stopped. The Service Stop Time may be set to the same value as the Service Start Time in order to indicate the datetime of an event.	XDSDocumentEntry.serviceStopTime
Document Hash	A SHA-1 hash representation of the document.	XDSDocumentEntry.hash
Keyword	One or more keywords that are related to the document submission. Both these fields must be <i>excluded</i> from submission.	XDSDocumentEntry.eventCodeList
		XDSDocumentEntry.eventCodeListDisplayName
Healthcare Facility Type Code	A code identifying the type of healthcare facility where the event relating to this document submission request initiated.	XDSDocumentEntry.healthcareFacilityTypeCode

LSS Field	Description	XDS.b Field Name
Healthcare Facility Type Name	A display friendly name for the above code.	XSDSDocumentEntry.healthcareFacilityTypeCodeDisplayName
Clinical Speciality Code	A code identifying the clinical specialty where the event relating to this document submission request initiated.	XSDSDocumentEntry.practiceSettingCode
Clinical Speciality Display Name	A display friendly name for the above specialty.	XSDSDocumentEntry.practiceSettingCodeDisplayName
N/A	This field is not present in the LSS definition of the Document Metadata as it is in the Common Header. The value from the common header should be replicated into this field.	XSDSDocumentEntry.sourcePatientId
N/A	This mandatory XDS.b field is not supported by PCEHR. It shall be set to a value of 'NA'.	XSDSDocumentEntry.confidentialityCode
N/A	This field is not required by the Logical Model presented within the LSS but is a mandatory field within XDS. This field shall be set to the same value as that provided in the classCode field.	XSDSDocumentEntry.typeCode
N/A	This field is not required by the Logical Model presented within the LSS but is a mandatory field within XDS. This field shall be set to the same value as that provided in the classCodeDisplayName field.	XSDSDocumentEntry.typeCodeDisplayName
Common Header. IHI Number	This value SHALL be set to the same value as the XSDSDocumentEntry.sourcePatientId.	XSDSDocumentEntry.patientId
N/A	This field is not required by the Logical Model presented within the LSS but is a mandatory field within XDS. Set to a fixed value of 'en-AU'.	XSDSDocumentEntry.languageCode
N/A	The MIME type of the document provided. This field is set to a fixed value of 'application/zip'.	XSDSDocumentEntry.mimeType
N/A	This will be the entryUUID allocated to the XDS Document Entry object within the PCEHR registry.	XSDSDocumentEntry.entryUUID
N/A	The size of the CDA document. This field is mandatory for ITI-42 document registrations.	XSDSDocumentEntry.size

Service Fault

Please refer to the *PCEHR Document Exchange using the IHE XDS.b Platform Technical Service Specification* [[PCEHR-DE-TSS](#)] section 4.1.7 for the XDS Service Fault.

3.2.4 getAuditView

This operation returns an audit trail from the PCEHR System for PCEHR roles healthcare provider organisation (HPI-O) and an individual (IHI) as follows:

- If the request is from a healthcare provider organisation, then all audit events for the provider across multiple PCEHRs will be returned.
- If the request is from an individual, then only the audit events for their PCEHR will be returned.

The audit view data presented to this requestor will contain data appropriate for the requestor's access rights and role in the system. The healthcare provider organisation is only able to access a subset of a consumer's audit events, while the consumer has access to all their audit events.

3.2.4.1 Actors and roles

Role 1: getAuditView Service Invoker

The *getAuditView Service Invoker* represents the party responsible for obtaining views from the PCEHR System. This role will typically be realised by a Conformant Portal, a Clinical Information System or a Contract Service Provider acting on behalf of one of those system types.

Role 2: getAuditView Service Provider

The *getAuditView Service Provider* role represents the party responsible for supplying views of information relating to PCEHR stored information, so that it may be accessed by authorised users. This role will be fulfilled by the National PCEHR System.

3.2.4.2 Pre-condition

Conformance points

VIEW-T 12 The *Service Invoker* SHALL set the Date To and Date From.

3.2.4.3 Post-conditions

Conformance points

VIEW-T 13 The *Service Provider* SHALL return an audit trail applicable to the PCEHR role within the specified period of time defined in the input message.

3.2.4.4 Interaction

Conformance points

VIEW-T 14 This operation SHALL be realised as a synchronous query between the *Service Invoker* and the *Service Provider*. The response SHALL be returned on the same software communication connection.

3.2.4.5 Inputs, Outputs and Faults

This section details the data which is submitted to the service as an input, the response returned and the details of any faults. The data types are realised as XSDs as detailed in [Appendix A](#).

The WSDLs and service interfaces for this service are also defined in [Appendix A](#).

Input message

Table 6 – getAuditView Input Message

Element Name	Type	Cardinality	Remarks
GetAuditView		1..1	
dateFrom	dateTime	1..1	The start date of the date range
dateTo	dateTime	1..1	The end date of the date range
/GetAuditView			

Output Message

Table 7 – getAuditView Output Message

Element Name	Type	Cardinality	Remarks
GetAuditViewResponse		1..1	
ResponseStatus		1..1	
code	String	1..1	Status Code for the result of the transaction
description	String	1..1	Brief status description
details	String	0..1	Additional detail of the response
/ResponseStatus			
AuditView		0..1	
EventTrail		1..*	
businessEvent	String	1..1	Unique internal event identifier
eventTimeStamp	DateTime	1..1	Business event date time
AuditEvent		0..1	
ParticipantDetails		0..1	
providerID	String	0..1	HPI-I number
providerName	String	0..1	Provider Name
accessingHPIO	String	0..1	HPI-O number
accessingHPIOName	String	0..1	HPI-O Name
participatingHPIO	String	0..1	HPI-O number
participatingHPIOName	String	0..1	HPI-O Name
userID	String	0..1	User Id
userName	String	0..1	User Name
displayRole	String	0..1	The role of the participant

/ParticipantDetails			
AccessedEntity		0..1	
ihiNumber	String	0..1	IHI Number
ihiName	String	0..1	Individual Name
subjectType	String	0..1	Subject Type
subject	String	0..1	Subject
/AccessedEntity			
ParticipantAction		0..1	
actionType	String	0..1	Create, Read, Update, Delete
operationPerformed	String	0..1	Operation performed
reason	String	0..1	Incorrect identity, medical inaccuracy, elect to remove, IHI status is decreased, no legal appointment authorised, no ownership of PCEHR, IHI not active, IHI not verified, terms and conditions were not accepted, death, withdrawal from participation
approvalDatetime	DateTime	0..1	Approval date time
approvalRole	String	0..1	Approval role
approvalName	String	0..1	Approval name
statusPriorActivation	String	0..1	Status prior activation
/ParticipantAction			
AccessConditions		0..1	
accessLevel	String	0..1	Self access, general access, limited access
accessPermission	String	0..1	Permit, deny
accessConditions	String	0..1	Open access, PACC access, PACCX access, emergency access, local consent access, authorised representative access, nominated representative access, incorrect code, local consent access, denied, access revoked
/AccessConditions			
/AuditEvent			
LogEvent		0..1	
messageLogLevel		1..1	WARN,ERROR,DEBUG,FATAL,AUDIT,INFO

StatusDetails		1..1	
code	String	1..1	Code
description	String	1..1	Description
details	String	0..1	Details
/StatusDetails			
ErrorDetails		0..1	
code	String	1..1	PCEHR_SUCCESS, PCEHR_ERROR_001, PCEHR_ERROR_002, PCEHR_ERROR_1600
description	String	1..1	Success, Technical Failure, Functional Failure
details	String	0..1	Details
/ErrorDetails			
/LogEvent			
/EventTrail			
/AuditView			
/GetAuditViewResponse			

Service Fault

Please refer to section [4.1.3.1](#).

3.2.5 registryStoredQuery

The `getDocumentList` operation is realised using `registryStoredQuery` operation defined in the *PCEHR Document Exchange using the IHE XDS.b Platform Technical Service Specification [PCEHR-DE-TSS]* section 3.3.3.

This operation returns a list of XDS.b XDSDocumentEntry objects that can be realised to derive document list or document tree within the client system.

3.2.5.1 Actors and roles

Role 1: registryStoredQuery Service Invoker

The *registryStoredQuery Service Invoker* represents the party responsible for obtaining views from the PCEHR System. This role will typically be realised by a Conformant Portal, a Clinical Information System or a Contract Service Provider acting on behalf of one of those system types.

Role 2: registryStoredQuery Service Provider

The *registryStoredQuery Service Provider* role represents the party responsible for supplying views of information relating to PCEHR stored information, so that it may be accessed by authorised users. This role will be fulfilled by the National PCEHR System.

3.2.5.2 Pre-conditions

Conformance points

VIEW-T 15 The *Service Invoker* shall comply with all the pre-condition conformance points defined in the *PCEHR Document Exchange using the IHE XDS.b Platform Technical Service Specification* [PCEHR-DE-TSS] section 3.3.3 ITI-18 Registry Stored Query.

3.2.5.3 Post-conditions

Conformance points

VIEW-T 16 The *Service Invoker* shall comply with all the post-condition conformance points defined in the *PCEHR Document Exchange using the IHE XDS.b Platform Technical Service Specification* [PCEHR-DE-TSS] section 3.3.3 ITI-18 Registry Stored Query.

3.2.5.4 Interaction

Conformance points

VIEW-T 17 The *Service Invoker* shall comply with all the interaction conformance points defined in the *PCEHR Document Exchange using the IHE XDS.b Platform Technical Service Specification* [PCEHR-DE-TSS] section 3.3.3 ITI-18 Registry Stored Query.

3.2.5.5 Inputs, Outputs and Faults

All inputs, outputs and faults data types are defined in the *PCEHR Document Exchange using the IHE XDS.b Platform Technical Service Specification* [PCEHR-DE-TSS] section 3.3.3.

Input message

Please refer to query.xsd in Appendix [A.1.1](#) for AdhocQueryRequest.

VIEW-T 18 The *Service Invoker* SHALL comply with the query id defined in *PCEHR Document Exchange using the IHE XDS.b Platform Technical Service Specification* [PCEHR-DE-TSS] section 3.3.3 ITI-18 Registry Stored Query.

VIEW-T 19 The *Service Invoker* SHALL comply with the query parameter defined in *PCEHR Document Exchange using the IHE XDS.b Platform Technical Service Specification* [PCEHR-DE-TSS] section 3.3.3 ITI-18 Registry Stored Query.

Output Message

Please refer to query.xsd in Appendix [A.1.1](#) for AdhocQueryResponse and *PCEHR Document Exchange using the IHE XDS.b Platform Technical Service Specification* [PCEHR-DE-TSS].

Service Fault

Please refer to the *PCEHR Document Exchange using the IHE XDS.b Platform Technical Service Specification* [PCEHR-DE-TSS].

3.2.6 **getRepresentativeListView**

This operation returns the list of representatives associated with a particular individual's PCEHR.

3.2.6.1 Actors and Roles

Role 1: *getRepresentativeListView Service Invoker*

The *getRepresentativeListView Invoker* represents the party responsible for obtaining views from the PCEHR System. This role will be typically realised by a Conformant Portal, a Clinical Information System (CIS) or a Contracted Service Provider (CSP).

Role 2: *getRepresentativeListView Service Provider*

The *getRepresentativeListView Service Provider* role represents the party responsible for supplying views of information relating to PCEHR stored information, so that it may be accessed by authorized *Service Invoker*.

3.2.6.2 Pre-condition

Conformance points

VIEW-T 41 The Service Invoker SHALL set the PCEHR individual IHI to the ihiNumber in the PCEHR Header.

3.2.6.3 Post-conditions

Conformance points

VIEW-T 42 The Service Provider SHALL NOT return the list of Nominated Representatives when the request is from a healthcare provider organisation or individual.

3.2.6.4 Interaction

Conformance points

VIEW-T 43 This operation SHALL be realised as a synchronous call between the Service Invoker and the Service Provider. The response SHALL be returned on the same software communication connection.

3.2.6.5 Inputs, Outputs and Faults

This section details the data which is submitted to the service as an input, the response returned and the details of any faults. The data types are realised as XML Schema Definitions (XSD) within Appendix A.

The Web Service Descriptions (WSDL) and service interfaces for this service are also defined in Appendix A.

Input message

Table 8 - *getRepresentativeListView* Input Message

Element Name	Type	Cardinality	Remarks
getRepresentativeList		1..1	
/getRepresentativeList			

Output MessageTable 9 - *getRepresentativeListView* Output Message

Element Name	Type	Cardinality	Remarks
getRepresentativeListResponse		1..1	
responseStatus			
code	String	1..1	Status code for the result of the transaction
description	String	1..1	Brief status description
details	String	0..1	Additional details of the response
/responseStatus			
PCEHRRecord		0..1	
representativeList		1..1	
representative		0..*	
ID	String	1..1	PCEHR Identity
Type		1..1	Values ('Authorised Representative', 'Legally Appointed Authorised Representative', 'Parent', 'Guardian', 'Nominated Representative')
name		1..1	The full name of the representative
nameTitle	String	0..1	Refer to TECH.SIS.HI.02 section 2
familyName	String	1..1	Individual Surname
givenName	String	0..2	Individual given names
nameSuffix	String	0..1	Refer to TECH.SIS.HI.02 section 2
usage	String	0..1	Values ('M', 'N', 'O', 'B', 'L', 'R')
preferred	String	0..1	Values ('true', 'false')
conditionalUse	String	0..1	Values ('1', '2', '3', '4')
/name			
address		0..1	
unstructuredAddressLine		0..1	
australianAddressLine	String	0..1	
postcode	String	1..1	Property postcode
Suburb	String	1..1	Property suburb name
state	String	1..1	Refer to TECH.SIS.HI.02 section 16
/unstructuredAddressLine			
australianStreetAddress		0..1	

Element Name	Type	Cardinality	Remarks
state		1..1	Refer to TECH.SIS.HI.02 section 16
postcode		1..1	Property postcode
suburb		1..1	Property suburb name
addressSiteName		0..1	Full name of physical building or property
unitGroup			
unitType	String	1..1	Mandatory if level number is present. Refer to TECH.SIS.HI.02 section 14
unitNumber	String	0..1	Mandatory if unit type is present
/unitGroup			
levelGroup			
levelType	String	1..1	Mandatory if level type is present
levelNumber	String	0..1	Mandatory if level number is present. Refer to TECH.SIS.HI.02 section 14
/levelGroup			
lotNumber	String	0..1	Mandatory if street number is not present
streetNumber	String	0..1	Numeric or alphanumeric reference of property street number
streetName	String	1..1	Property street name
streetType	String	0..1	Refer to TECH.SIS.HI.02 section 13
streetSuffix	String	0..1	Refer to TECH.SIS.HI.02 section 17
/australianStreetAddress			
australianPostalAddress		1..1	
state	String	1..1	Refer to TECH.SIS.HI.02 section 16
Postcode	String	1..1	Property postcode
suburb	String	1..1	Property suburb name
postalDeliveryGroup			
postalDeliveryType	String	1..1	Refer to TECH.SIS.HI.02 section 18
postalDeliveryNumber	String	0..1	Channel of postal delivery. Mandatory if postal delivery type code is present, unless type code is Care PO, CMA or CMB.
/postalDeliveryGroup			
/australianPostalAddress			

Element Name	Type	Cardinality	Remarks
/address			
/representative			
/representativeList			
/PCEHRRecord			
/getRepresentativeList Response			

Service Fault

Please refer to section [4.1.3.1](#).

3.2.7 getIndividualDetailsView

This operation `getIndividualDetailsView` returns the details about the individual consumer, including information such as name, date of birth, age, emergency contact and carer information. It does not return the individual consumer's mailing address when a provider requests to view an individual's details.

3.2.7.1 Actors and Roles

Role 1: `getIndividualDetailsView` Service Invoker

The `getIndividualDetailsView Invoker` represents the party responsible for obtaining views from the PCEHR System. This role will be typically realised by a Conformant Portal, a Clinical Information System (CIS) or a Contracted Service Provider (CSP).

Role 2: `getIndividualDetailsView` Service Provider

The `getIndividualDetailsView Service Provider` role represents the party responsible for supplying views of information relating to PCEHR stored information, so that it may be accessed by authorised Service Invoker.

3.2.7.2 Pre-condition

Conformance points

VIEW-T 44 The Service Invoker SHALL set the PCEHR individual IHI to the `ihiNumber` in the PCEHR Header.

3.2.7.3 Post-conditions

Conformance points

None

3.2.7.4 Interaction

Conformance points

VIEW-T 45 This operation SHALL be realised as a synchronous call between the Service Invoker and the Service Provider. The response SHALL be returned on the same software communication connection.

3.2.7.5 Inputs, Outputs and Faults

This section details the data which is submitted to the service as an input, the response returned and the details of any faults. The data types are realised as XML Schema Definitions (XSD) within Appendix A.

The Web Service Descriptions (WSDL) and service interfaces for this service are also defined in Appendix A.

Input message

Table 10 – *getIndividualDetailsView* Input Message

Element Name	Type	Cardinality	Remarks
getIndividualDetailsView		1..1	
/getIndividualDetailsView			

Output Message

Table 11- *getIndividualDetailsView* Output Message

Element Name	Type	Cardinality	Remarks
getIndividualDetailsViewResponse		1..1	
responseStatus			
code	String	1..1	Status code for the result of the transaction
description	String	1..1	Brief status description
details	String	0..1	Additional details of the response
/responseStatus			
individual		0..1	
name		1..1	
nameTitle	String	0..1	Refer to TECH.SIS.HI.02 section 2
familyName	String	1..1	Individual Surname
givenName	String	0..2	Individual given names
nameSuffix	String	0..1	Refer to TECH.SIS.HI.02 section 2
usage	String	0..1	Values ('M', 'N', 'O', 'B', 'L', 'R')
preferred	String	0..1	Values ('true', 'false')
conditionalUse	String	0..1	Values ('1', '2', '3', '4')
/name			
sex	String	1..1	Values("F", "I", "M", "N")
dateOfBirth	Date	1..1	
dateAccuracyIndicatorType	String	0..1	

Element Name	Type	Cardinality	Remarks
ihiRecordStatus	String	0..1	Values ('Verified', 'Unverified')
ihiStatus	String	0..1	Values ('Active', 'Deceased', 'Retired', 'Resolved', 'Expired')
ihiNumber	String	1..1	IHI number
contactDetails		0..1	
mobilePhoneNumber	String	0..1	
emailAddress	String	0..1	
/contactDetails			
contactPersons		0..1	
contactPerson		1..*	
type	String	1..1	Values("Emergency", "Next of Kin", "Carer")
name	String	1..1	Contact Full Name
phoneNumber	String	0..1	Contact Phone Number
emailAddress	String	0..1	Contact Email Address
relationship	String	0..1	Description of the relationship between the record holder and the Emergency Contact, Next of Kin or Carer (e.g. Son, father, aunt, uncle, friend, etc)
/contactPerson			
/contactPersons			
/individual			
/getIndividualDetailsViewResponse			

Service Fault

Please refer to section [4.1.3.1](#).

4 Information Viewpoint

The Information Viewpoint addresses common information models that are used in the Service Operations defined in the Computational Viewpoint.

Note: The error code tables may be subject to extension as the development of the PCEHR system progresses.

4.1 Information Data Type Realisation

This section describes the information data type realisation from the logical service specification [PCEHR-VS-LSS] into this technical specification.

4.1.1 Common Header

Common Header is realised into the SOAP Header on web service calls as:

- WS-Addressing Header
- Timestamp
- Signature
- PCEHRHeader

4.1.1.1 WS-Addressing Header (Request)

Table 12 - WS-Addressing Header (Request)

Element Name	Type	Cardinality	Remarks
WS Addressing		1..1	
MessageId	UUID	1..1	Unique id for the message. E.g. uuid:95b48e68-5dfc-4dbd-ab05-aaa855cec03f
To	anyURI	1..1	Value: e.g. http://www.w3.org/2005/08/addressing/anonymous
Action	anyURI	1..1	Identifier (full namespace) of the virtual service being invoked.
/WS Addressing			

Conformance points

VIEW-T 20 The *Service Invoker* SHALL set these values in accordance with the [ATS 5820-2010] Section 6 - Metadata.

4.1.1.2 WS-Addressing Header (Response)

Table 13 - WS-Addressing Header (Response)

Element Name	Type	Cardinality	Remarks
WS Addressing		1..1	
MessageId	UUID	1..1	Unique id for the message. E.g. uuid:95b48e68-5dfc-4dbd-ab05-aaa855cec03f
RelatesTo	UUID	1..1	MessageId of the original service request.
/WS Addressing			

Conformance points

VIEW-T 21 The Service Provider SHALL set these values in accordance with the [ATS 5820-2010] Section 6 - Metadata.

4.1.1.3 Transmission Timestamp

Table 14 - Timestamp Header

Element Name	Type	Cardinality	Remarks
timestamp		1..1	
created	dateTime	1..1	Time at SOAP message creation. Inclusive of Date, Time and UTC Timezone. E.g. 2011-10-25T03:06:13Z
expires	dateTime	0..1	For future use.
/timestamp	-	-	-

4.1.1.4 Transmission Signature

Table 15 - Transmission Signature in SOAP Header

Element Name	Type	Cardinality	Remarks
signature		1..1	
signature	ds:signature	1..1	A signed attestation of key SOAP message elements using the ATS 5821 specification.
/signature	-	-	-

VIEW-T 34 The elements signed by the Transmission Signature by all parties SHALL include:

VIEW-T 35 SOAP Body element

VIEW-T 36 The elements signed by the Transmission Signature by the service Invoker SHALL also include:

VIEW-T 37 PCEHR Header element (as defined in Section 4.1.1.5)

- VIEW-T 38** The elements signed by the Transmission Signature SHOULD include the Transmission Timestamp element (as defined in section 3.1)
- VIEW-T 39** The Service Invoker and Service Provider SHALL calculate the ds:DigestValue as specified in "Section 4. XML Signature Profile" of [ATS 5821-2010] prior to the application of MTOM/XOP.
- VIEW-T 40** The ds:SignedInfo element type SHALL be realised in conformance with "Section 4. XML Signature Profile" as specified in [ATS 5821-2010]
- VIEW-T 41** The fragment identifier used within the ds:Reference element, specified in "Section 4. XML Signature Profile" of [ATS 5821-2010], SHALL refer to the "ID" attribute specified in section 3.3 of [W3C-XML-1.1] of the element referenced.
- VIEW-T 42** As specified in [ATS 5821-2010], the ds:signature element type SHALL be realised in conformance with section 4. XML Signature Profile".

4.1.1.5 PCEHRHeader

PCEHRHeader is used for all interactions with the PCEHR System.

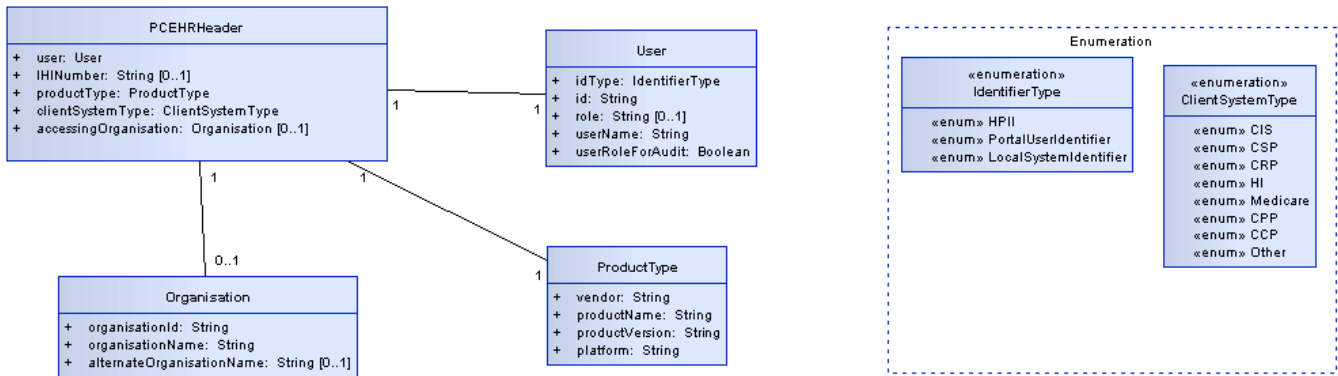


Figure 3 – PCEHRHeader

Table 16 - PCEHRHeader

Element Name	Type	Cardinality	Remarks
PCEHRHeader		1..1	
User		1..1	
IDType	IdentifierType	1..1	Values ("HPII", "PortalUserIdentifier", "LocalSystemIdentifier")
ID	String	1..1	PCEHR identity, 16 digit HPI-I number or Other User ID
role	String	0..1	Optional User Role
userName	String	1..1	Username
useRoleForAudit	Boolean	1..1	If true PCEHR will use sourceSystemUserRole as the user name for audit, else PCEHR will use sourceSystemUserName as the user name for audit
/User			
IHINumber	String	0..1	PCEHR individual's 16 digit IHI number

Element Name	Type	Cardinality	Remarks
productType		1..1	
vendor	String	1..1	Client system's vendor name
productName	String	1..1	Client system's product name
productVersion	String	1..1	Client system's product version
platform	String	1..1	Client system's platform
/productType			
clientSystemType	String	1..1	Values ("CCP", "CPP", "CIS", "CSP", "CRP", "HI", "Medicare", "Other")
accessingOrganisation		0..1	
organisationID	String	1..1	The 16 digit Healthcare Organisation Identifier (HPI-O)
organisationName	String	1..1	Healthcare Organisation Name
alternateOrganisationName	String	0..1	Alternate Healthcare Organisation Name
/accessingOrganisation			
/PCEHRHeader			

Conformance points

VIEW-T 22 The *Service Invoker* SHALL set the `ihiNumber` to the IHI of the individual who owns the PCEHR.

VIEW-T 23 The *Service Invoker* SHALL set the `accessingOrganisation` to the accessing organisation attempting to query the PCEHR.

VIEW-T 24 The *Service Invoker* SHALL set the `User.ID` to either:

- Preferably, if known, the 16 digit of HPI-I of the provider attempting to access the PCEHR.
- Or alternatively, a local identifier of the provider/support operator attempting to access the PCEHR.

VIEW-T 25 The *Service Invoker* SHALL set the `User.IDType` to the relevant value to identify the type of `User.ID`.

VIEW-T 26 The *Service Invoker* SHALL set the `productType.vendor` to the vendor name of the client system.

VIEW-T 27 The *Service Invoker* SHALL set the `productType.productName` to the product name of the client system.

VIEW-T 28 The *Service Invoker* SHALL set the `productType.productVersion` to the product version of the client system.

VIEW-T 29 The *Service Invoker* SHALL set the `productType.platform` to the client system vendor.

4.1.2 Output Message Data Types

4.1.2.1 Common Response Status

All PCEHR System operations will return common response field.

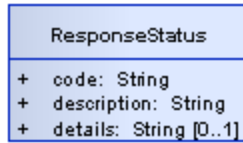


Figure 4 – ResponseStatus

Table 17 ResponseStatus Responses

Element Name	Type	Cardinality	Remarks
ResponseStatus		1..1	
code	String	1..1	Status Code for the result of the transaction
description	String	1..1	Brief status description
details	String	0..1	Additional detail of the response
/ ResponseStatus			

Conformance points

VIEW-T 30 The *Service Provider* SHALL set the appropriate code from Table 18 for any business failure.

Error Codes

Table 18 - Response Codes

Code	Description
PCEHR_SUCCESS	SUCCESS
PCEHR_ERROR_1600	Too many entries found
PCEHR_ERROR_3002	Document metadata failed validation
PCEHR_ERROR_6501	Consolidated view could not be generated
PCEHR_ERROR_6001	No representatives found
XDSRegistryError	PCEHR_ERROR_3002 – Document metadata failed validation

4.1.3 Service Fault Data Types

4.1.3.1 GenericServiceFault

The output request structure is defined in the *PCEHR View Service - Logical Service Specification* [PCEHR-VS-LSS]. The XSD for this request is defined in [Appendix A](#).

5 Engineering Viewpoint

The engineering viewpoint includes definitions of mechanisms and functions to support distributed interactions between computational objects as a series of templates (i.e. patterns) for computational interactions. These, in turn, are parameterised to support a range of different policies defined in the enterprise, information or computational specifications.

5.1 Discovery Services

The location of the services exposed by the PCEHR System will be shared between parties before interaction. Dynamic discovery mechanisms will not be provided.

Appendix A XSD and WSDL

A.1 Data Types

A.1.1 XML schema – query.xsd

The following XML schema defines the XSD for IHI ITI-58 Registry Store Query messages.

The query.xsd can be found in the XDS.b -supporting material [[XDS.b SM](#)] (/schema/ebRS).

A.1.2 XML schema - PCEHR_GetChangeHistoryView.xsd

The following XML schema defines the data type for getChangeHistoryView operation.

```
<?xml version="1.0" encoding="UTF-8"?>
<!--Version 1.0.1 issued 17 April 2012-->
<xs:schema
xmlns:tns="http://ns.electronichealth.net.au/pcehr/xsd/interfaces/GetChangeHis
toryView/1.0" xmlns:xs="http://www.w3.org/2001/XMLSchema"
xmlns:ns3="urn:oasis:names:tc:ebxml-regrep:xsd:rs:3.0"
xmlns:ns4="urn:oasis:names:tc:ebxml-regrep:xsd:rim:3.0"
targetNamespace="http://ns.electronichealth.net.au/pcehr/xsd/interfaces/GetCha
ngeHistoryView/1.0">
  <xs:import namespace="urn:oasis:names:tc:ebxml-regrep:xsd:rs:3.0"
schemaLocation="xsd_1.xsd"/>
  <xs:import namespace="urn:oasis:names:tc:ebxml-regrep:xsd:rim:3.0"
schemaLocation="rim.xsd"/>
  <xs:element name="getChangeHistoryView">
    <xs:complexType>
      <xs:sequence>
        <xs:element name="documentID" type="xs:string"/>
      </xs:sequence>
    </xs:complexType>
  </xs:element>
  <xs:element name="getChangeHistoryViewResponse">
    <xs:complexType>
      <xs:sequence>
        <xs:element name="AdhocQueryResponse" nillable="true">
          <xs:complexType>
            <xs:complexContent>
              <xs:extension
base="ns3:RegistryResponseType">
                <xs:sequence>
                  <xs:element
ref="ns4:RegistryObjectList"/>
                </xs:sequence>
              </xs:extension>
            </xs:complexContent>
          </xs:complexType>
        </xs:element>
        <xs:attribute name="startIndex"
type="xs:integer"/>
        <xs:attribute
name="totalResultCount" type="xs:integer"/>
      </xs:sequence>
    </xs:complexType>
  </xs:element>
</xs:schema>
```

A.1.3 XML Schema - PCEHR_GetConsolidatedView.xsd

The following XML schema defines the data type for getConsolidatedView operation.

```
<?xml version="1.0" encoding="UTF-8"?>
<!--Version 1.0.1 issued 17 April 2012-->
<xs:schema xmlns:xs="http://www.w3.org/2001/XMLSchema"
xmlns:ns1="http://ns.electronichealth.net.au/pcehr/xsd/common/CommonCoreElements/1.0"
xmlns:ns4="http://ns.electronichealth.net.au/pcehr/xsd/interfaces/GetConsolidatedView/1.0"
targetNamespace="http://ns.electronichealth.net.au/pcehr/xsd/interfaces/GetConsolidatedView/1.0" elementFormDefault="qualified"
attributeFormDefault="unqualified">
  <xs:import
namespace="http://ns.electronichealth.net.au/pcehr/xsd/common/CommonCoreElements/1.0" schemaLocation="../Common/PCEHR_CommonTypes.xsd"/>
  <xs:element name="getConsolidatedView"/>
  <xs:element name="getConsolidatedViewResponse">
    <xs:complexType>
      <xs:sequence>
        <xs:element name="responseStatus"
type="ns1:responseStatusType"/>
        <xs:element name="PCEHRRecord" minOccurs="0">
          <xs:complexType>
            <xs:sequence>
              <xs:element name="consolidatedView">
                <xs:complexType>
                  <xs:simpleContent>
                    <xs:extension
base="xs:base64Binary"/>
                  </xs:simpleContent>
                </xs:complexType>
              </xs:element>
            </xs:sequence>
          </xs:complexType>
        </xs:element>
      </xs:sequence>
    </xs:complexType>
  </xs:element>
</xs:schema>
```

A.1.4 XML Schema - PCEHR_GetAuditView.xsd

The following XML schema defines the data type for getAuditView operation.

```
<?xml version="1.0" encoding="UTF-8"?>
<!--Version 1.1 issued 17 April 2012-->
<xs:schema xmlns:xs="http://www.w3.org/2001/XMLSchema"
xmlns:ns1="http://ns.electronichealth.net.au/pcehr/xsd/common/CommonCoreElements/1.0"
xmlns:ns2="http://ns.electronichealth.net.au/pcehr/xsd/interfaces/GetAuditView/1.1"
targetNamespace="http://ns.electronichealth.net.au/pcehr/xsd/interfaces/GetAuditView/1.1" elementFormDefault="qualified" attributeFormDefault="unqualified">
  <xs:import
namespace="http://ns.electronichealth.net.au/pcehr/xsd/common/CommonCoreElements/1.0" schemaLocation="../Common/PCEHR_CommonTypes.xsd"/>
  <xs:element name="getAuditView">
    <xs:annotation>
      <xs:documentation>Comment describing your root
element</xs:documentation>
    </xs:annotation>
    <xs:complexType>
      <xs:sequence>
        <xs:element name="dateFrom" type="xs:dateTime"/>
        <xs:element name="dateTo" type="xs:dateTime"/>
      </xs:sequence>
    </xs:complexType>
  </xs:element>
</xs:schema>
```

```

    </xs:element>
    <xs:element name="getAuditViewResponse">
      <xs:complexType>
        <xs:sequence>
          <xs:element name="responseStatus"
type="ns1:responseStatusType"/>
          <xs:element name="auditView" minOccurs="0">
            <xs:complexType>
              <xs:sequence>
                <xs:element name="eventTrail"
maxOccurs="unbounded">
                  <xs:complexType>
                    <xs:sequence>
                      <xs:element
name="businessEvent" type="xs:string"/>
                      <xs:element
name="eventTimeStamp" type="xs:dateTime"/>
                      <xs:element
name="auditEvent" minOccurs="0">
                        <xs:complexType>
                          <xs:sequence>
                            <xs:element name="auditEventID" type="xs:string" minOccurs="0"/>
                            <xs:element name="participantDetails" type="ns1:participantDetailsType"
minOccurs="0"/>
                            <xs:element name="accessedEntity" type="ns1:accessedEntityType"
minOccurs="0"/>
                            <xs:element name="participantAction" type="ns1:participantActionType"
minOccurs="0"/>
                            <xs:element name="accessConditions" type="ns1:accessConditionsType"
minOccurs="0"/>
                          </xs:sequence>
                        </xs:complexType>
                      </xs:element>
                    <xs:element
name="logEvent" minOccurs="0">
                      <xs:complexType>
                        <xs:sequence>
                          <xs:element name="messageLogLevel">
                            <xs:simpleType>
                              <xs:restriction base="xs:string">
                                <xs:enumeration value="WARN"/>
                                <xs:enumeration value="ERROR"/>
                                <xs:enumeration value="DEBUG"/>
                                <xs:enumeration value="AUDIT"/>
                                <xs:enumeration value="FATAL"/>
                                <xs:enumeration value="INFO"/>
                              </xs:restriction>
                            </xs:simpleType>
                          </xs:element>
                          <xs:element name="statusDetails" type="ns1:responseStatusType"/>

```

```

        <xs:element name="errorDetails" type="ns1:responseStatusType"
minOccurs="0"/>

    </xs:sequence>

</xs:complexType>

</xs:element>
</xs:sequence>
</xs:complexType>
</xs:element>
</xs:sequence>
</xs:complexType>
</xs:element>
</xs:sequence>
</xs:complexType>
</xs:element>
</xs:schema>

```

A.1.5 XML Schema - PCEHR_CommonTypes.xsd

The following XML schema defines the XSD for common data associated with all the WSDLs interface.

```

<?xml version="1.0" encoding="UTF-8"?>
<!--Version 1.0.1 issued 24 April 2012-->
<xs:schema xmlns:xs="http://www.w3.org/2001/XMLSchema"
xmlns:ns1="http://ns.electronichealth.net.au/pcehr/xsd/common/CommonCoreElemen
ts/1.0" xmlns:ds="http://www.w3.org/2000/09/xmldsig#"
targetNamespace="http://ns.electronichealth.net.au/pcehr/xsd/common/CommonCore
Elements/1.0" elementFormDefault="qualified"
attributeFormDefault="unqualified">
    <xs:import namespace="http://www.w3.org/2000/09/xmldsig#"
schemaLocation="xmldsig-core-schema.xsd"/>
    <xs:element name="timestamp" type="ns1:timestampType"/>
    <xs:complexType name="timestampType">
        <xs:sequence>
            <xs:element name="created" type="xs:dateTime"
minOccurs="1" maxOccurs="1"/>
            <xs:element name="expires" type="xs:dateTime"
minOccurs="0" maxOccurs="1"/>
        </xs:sequence>
    </xs:complexType>
    <xs:element name="signature" type="ns1:signatureContainerType"/>
    <xs:complexType name="signatureContainerType">
        <xs:sequence>
            <xs:element ref="ds:Signature" minOccurs="1"
maxOccurs="1"/>
        </xs:sequence>
    </xs:complexType>
    <xs:complexType name="nameType">
        <xs:sequence>
            <xs:element name="nameTitle" minOccurs="0" maxOccurs="1">
                <xs:simpleType>
                    <xs:restriction base="xs:string">
                        <xs:maxLength value="40"/>
                    </xs:restriction>
                </xs:simpleType>
            </xs:element>
            <xs:element name="familyName" minOccurs="1" maxOccurs="1">
                <xs:simpleType>
                    <xs:restriction base="xs:string">
                        <xs:maxLength value="40"/>
                        <xs:minLength value="1"/>
                    </xs:restriction>
                </xs:simpleType>
            </xs:element>
            <xs:element name="givenName" minOccurs="0" maxOccurs="2">
                <xs:simpleType>
                    <xs:restriction base="xs:string">
                        <xs:minLength value="1"/>
                        <xs:maxLength value="40"/>
                    </xs:restriction>
                </xs:simpleType>
            </xs:element>
        </xs:sequence>
    </xs:complexType>

```

```

        </xs:restriction>
      </xs:simpleType>
    </xs:element>
  </xs:sequence>
</xs:complexType>
<xs:complexType name="addressType">
  <xs:sequence>
    <xs:element name="type" minOccurs="1" maxOccurs="1">
      <xs:simpleType>
        <xs:restriction base="xs:string">
          <xs:enumeration
value="International"/>
          <xs:enumeration
value="AustralianStreet"/>
          <xs:enumeration
value="AustralianPostal"/>
        </xs:restriction>
      </xs:simpleType>
    </xs:element>
    <xs:element name="state" type="xs:string" minOccurs="1"
maxOccurs="1"/>
    <xs:element name="postCode" minOccurs="0" maxOccurs="1">
      <xs:simpleType>
        <xs:restriction base="xs:string">
          <xs:minLength value="1"/>
          <xs:maxLength value="4"/>
        </xs:restriction>
      </xs:simpleType>
    </xs:element>
    <xs:element name="suburb" minOccurs="0" maxOccurs="1">
      <xs:simpleType>
        <xs:restriction base="xs:string">
          <xs:minLength value="1"/>
          <xs:maxLength value="30"/>
        </xs:restriction>
      </xs:simpleType>
    </xs:element>
    <xs:element name="postalDeliveryGroup" minOccurs="0"
maxOccurs="1">
      <xs:complexType>
        <xs:sequence>
          <xs:element name="postalDeliveryType"
type="xs:string" minOccurs="0" maxOccurs="1"/>
          <xs:element
name="postalDeliveryNumber" minOccurs="0" maxOccurs="1">
            <xs:simpleType>
              <xs:restriction
base="xs:string">
                <xs:minLength
value="1"/>
                <xs:maxLength
value="11"/>
              </xs:restriction>
            </xs:simpleType>
          </xs:sequence>
        </xs:complexType>
      </xs:element>
    <xs:element name="addressSiteName" minOccurs="0"
maxOccurs="1">

```

```

        <xs:simpleType>
            <xs:restriction base="xs:string">
                <xs:maxLength value="30"/>
            </xs:restriction>
        </xs:simpleType>
    </xs:element>
    <xs:element name="unitGroup" minOccurs="0" maxOccurs="1">
        <xs:complexType>
            <xs:sequence>
                <xs:element name="unitType"
type="xs:string" minOccurs="0" maxOccurs="1"/>
                <xs:element name="unitNumber"
minOccurs="0" maxOccurs="1">
                    <xs:simpleType>
                        <xs:restriction
base="xs:string">
                            <xs:minLength
value="1"/>
                            <xs:maxLength
value="6"/>
                        </xs:restriction>
                    </xs:simpleType>
                </xs:element>
            </xs:sequence>
        </xs:complexType>
    </xs:element>
    <xs:element name="levelGroup" minOccurs="0" maxOccurs="1">
        <xs:complexType>
            <xs:sequence>
                <xs:element name="levelType"
type="xs:string" minOccurs="0" maxOccurs="1"/>
                <xs:element name="levelNumber"
minOccurs="0" maxOccurs="1">
                    <xs:simpleType>
                        <xs:restriction
base="xs:string">
                            <xs:minLength
value="1"/>
                            <xs:maxLength
value="4"/>
                        </xs:restriction>
                    </xs:simpleType>
                </xs:element>
            </xs:sequence>
        </xs:complexType>
    </xs:element>
    <xs:element name="lotNumber" minOccurs="0" maxOccurs="1">
        <xs:simpleType>
            <xs:restriction base="xs:string">
                <xs:minLength value="1"/>
                <xs:maxLength value="15"/>
            </xs:restriction>
        </xs:simpleType>
    </xs:element>
    <xs:element name="streetNumber" minOccurs="0"
maxOccurs="1">
        <xs:simpleType>
            <xs:restriction base="xs:string">
                <xs:minLength value="1"/>
                <xs:maxLength value="12"/>
            </xs:restriction>
        </xs:simpleType>
    </xs:element>
    <xs:element name="streetName" minOccurs="0" maxOccurs="1">
        <xs:simpleType>
            <xs:restriction base="xs:string">
                <xs:minLength value="1"/>
                <xs:maxLength value="30"/>
            </xs:restriction>
        </xs:simpleType>
    </xs:element>
    <xs:element name="streetType" type="xs:string"
minOccurs="0" maxOccurs="1"/>

```



```

        <xs:element name="streetSuffix" type="xs:string"
minOccurs="0" maxOccurs="1"/>
        <xs:element name="country" type="xs:string" minOccurs="0"
maxOccurs="1"/>
        <xs:element name="internationalAddressLine" minOccurs="0"
maxOccurs="1">
            <xs:simpleType>
                <xs:restriction base="xs:string">
                    <xs:minLength value="1"/>
                    <xs:maxLength value="120"/>
                </xs:restriction>
            </xs:simpleType>
        </xs:element>
    </xs:sequence>
</xs:complexType>
<xs:complexType name="responseStatusType">
    <xs:sequence>
        <xs:element name="code" minOccurs="1" maxOccurs="1">
            <xs:simpleType>
                <xs:restriction base="xs:string">
                    <xs:minLength value="1"/>
                </xs:restriction>
            </xs:simpleType>
        </xs:element>
        <xs:element name="description" type="xs:string"
minOccurs="1" maxOccurs="1"/>
        <xs:element name="details" type="xs:string" minOccurs="0"
maxOccurs="1"/>
    </xs:sequence>
</xs:complexType>
<xs:simpleType name="statusType">
    <xs:restriction base="xs:string">
        <xs:enumeration value="Active"/>
        <xs:enumeration value="Deceased"/>
        <xs:enumeration value="Retired"/>
        <xs:enumeration value="Resolved"/>
        <xs:enumeration value="Expired"/>
    </xs:restriction>
</xs:simpleType>
<xs:element name="medicareCardNumber">
    <xs:simpleType>
        <xs:restriction base="xs:token">
            <xs:minLength value="10"/>
            <xs:maxLength value="10"/>
        </xs:restriction>
    </xs:simpleType>
</xs:element>
<xs:element name="medicareIRN">
    <xs:simpleType>
        <xs:restriction base="xs:integer">
            <xs:minInclusive value="1"/>
            <xs:maxInclusive value="9"/>
        </xs:restriction>
    </xs:simpleType>
</xs:element>
<xs:element name="dvaFileNumber">
    <xs:simpleType>
        <xs:restriction base="xs:token">
            <xs:minLength value="2"/>
            <xs:maxLength value="9"/>
        </xs:restriction>
    </xs:simpleType>
</xs:element>
<xs:simpleType name="recordStatusType">
    <xs:restriction base="xs:string">
        <xs:enumeration value="Verified"/>
        <xs:enumeration value="Unverified"/>
    </xs:restriction>
</xs:simpleType>
<xs:element name="PCEHRHeader">
    <xs:complexType>
        <xs:sequence>
            <xs:element name="User" minOccurs="1" maxOccurs="1">
                <xs:complexType>

```

```

                                <xs:sequence>
                                <xs:element name="IDType"
minOccurs="1" maxOccurs="1">
                                    <xs:simpleType>
                                    <xs:restriction
base="xs:string">
                                        <xs:enumeration value="HPII"/>
                                        <xs:enumeration value="PortalUserIdentifier"/>
                                        <xs:enumeration value="LocalSystemIdentifier"/>
                                    </xs:restriction>
                                    </xs:simpleType>
                                </xs:element>
                                <xs:element name="ID"
type="xs:string" minOccurs="1" maxOccurs="1"/>
                                <xs:element name="role"
type="xs:string" minOccurs="0" maxOccurs="1"/>
                                <xs:element name="userName"
type="xs:string" minOccurs="1" maxOccurs="1"/>
                                <xs:element
name="useRoleForAudit" type="xs:boolean" minOccurs="1" maxOccurs="1"/>
                                </xs:sequence>
                                </xs:complexType>
                                </xs:element>
                                <xs:element ref="ns1:ihiNumber" minOccurs="0"
maxOccurs="1"/>
                                <xs:element name="productType" minOccurs="1"
maxOccurs="1">
                                    <xs:complexType>
                                    <xs:sequence>
                                    <xs:element name="vendor"
type="xs:string" minOccurs="1" maxOccurs="1"/>
                                    <xs:element name="productName"
type="xs:string" minOccurs="1" maxOccurs="1"/>
                                    <xs:element
name="productVersion" type="xs:string" minOccurs="1" maxOccurs="1"/>
                                    <xs:element name="platform"
type="xs:string" minOccurs="1" maxOccurs="1"/>
                                    </xs:sequence>
                                    </xs:complexType>
                                </xs:element>
                                <xs:element name="clientSystemType" minOccurs="1"
maxOccurs="1">
                                    <xs:simpleType>
                                    <xs:restriction base="xs:string">
                                    <xs:enumeration value="CIS"/>
                                    <xs:enumeration value="CSP"/>
                                    <xs:enumeration value="CRP"/>
                                    <xs:enumeration value="HI"/>
                                    <xs:enumeration
value="Medicare"/>
                                    <xs:enumeration value="CPP"/>
                                    <xs:enumeration value="CCP"/>
                                    <xs:enumeration value="Other"/>
                                    </xs:restriction>
                                    </xs:simpleType>
                                </xs:element>
                                <xs:element name="accessingOrganisation"
minOccurs="0" maxOccurs="1">
                                    <xs:complexType>
                                    <xs:sequence>
                                    <xs:element
name="organisationID" type="xs:string" minOccurs="1" maxOccurs="1"/>
                                    <xs:element
name="organisationName" type="xs:string" minOccurs="1" maxOccurs="1"/>
                                    <xs:element
name="alternateOrganisationName" type="xs:string" minOccurs="0"
maxOccurs="1"/>
                                    </xs:sequence>
                                    </xs:complexType>
                                </xs:element>
                                </xs:sequence>

```

```

        </xs:complexType>
    </xs:element>
    <xs:element name="sex">
        <xs:simpleType>
            <xs:restriction base="xs:string">
                <xs:enumeration value="M"/>
                <xs:enumeration value="F"/>
                <xs:enumeration value="I"/>
                <xs:enumeration value="N"/>
            </xs:restriction>
        </xs:simpleType>
    </xs:element>
    <xs:complexType name="accessConditionsType">
        <xs:sequence>
            <xs:element name="accessLevel" minOccurs="0"
maxOccurs="1">
                <xs:simpleType>
                    <xs:restriction base="xs:string">
                        <xs:enumeration value="Self"/>
                        <xs:enumeration value="General"/>
                        <xs:enumeration value="Limited"/>
                    </xs:restriction>
                </xs:simpleType>
            </xs:element>
            <xs:element name="accessPermission" minOccurs="0"
maxOccurs="1">
                <xs:simpleType>
                    <xs:restriction base="xs:string">
                        <xs:enumeration value="Permit"/>
                        <xs:enumeration value="Deny"/>
                    </xs:restriction>
                </xs:simpleType>
            </xs:element>
            <xs:element name="accessConditions" minOccurs="0"
maxOccurs="1">
                <xs:simpleType>
                    <xs:restriction base="xs:string">
                        <xs:enumeration value="OpenAccess"/>
                        <xs:enumeration
value="AccessRevoked"/>
                        <xs:enumeration value="PACAccess"/>
                        <xs:enumeration value="PACXAccess"/>
                        <xs:enumeration
value="EmergencyAccess"/>
                        <xs:enumeration
value="LocalConsentAccess"/>
                        <xs:enumeration
value="AuthorisedRepresentativeAccess"/>
                        <xs:enumeration
value="NominatedRepresentativeAccess"/>
                        <xs:enumeration
value="IncorrectCode"/>
                        <xs:enumeration
value="LocalConsentAccessDenied"/>
                        <xs:enumeration
value="AccessRevoked"/>
                    </xs:restriction>
                </xs:simpleType>
            </xs:element>
        </xs:sequence>
    </xs:complexType>
    <xs:complexType name="organisationServiceType">
        <xs:sequence>
            <xs:element name="organisationType" minOccurs="1"
maxOccurs="1">
                <xs:simpleType>
                    <xs:restriction base="xs:string">
                        <xs:maxLength value="7"/>
                    </xs:restriction>
                </xs:simpleType>
            </xs:element>
            <xs:element name="organisationServiceType" minOccurs="1"
maxOccurs="1">
                <xs:simpleType>

```

```

                <xs:restriction base="xs:string">
                    <xs:maxLength value="7"/>
                </xs:restriction>
            </xs:simpleType>
        </xs:element>
        <xs:element name="organisationServiceUnit" minOccurs="0"
maxOccurs="1">
            <xs:simpleType>
                <xs:restriction base="xs:string">
                    <xs:maxLength value="1000"/>
                </xs:restriction>
            </xs:simpleType>
        </xs:element>
        <xs:element name="serviceComments" minOccurs="0"
maxOccurs="1">
            <xs:simpleType>
                <xs:restriction base="xs:string">
                    <xs:maxLength value="250"/>
                </xs:restriction>
            </xs:simpleType>
        </xs:element>
        <xs:element name="complexDate" minOccurs="1"
maxOccurs="unbounded">
            <xs:complexType>
                <xs:sequence>
                    <xs:element name="type" minOccurs="1"
maxOccurs="1">
                        <xs:simpleType>
                            <xs:restriction
base="xs:string">
                                <xs:enumeration
value="StartDate"/>
                                <xs:enumeration
value="EndDate"/>
                            </xs:restriction>
                        </xs:simpleType>
                    </xs:element>
                    <xs:element name="date" type="xs:date"
minOccurs="1" maxOccurs="1"/>
                </xs:sequence>
                <xs:element name="accuracyIndicator"
type="xs:string" minOccurs="1" maxOccurs="1"/>
            </xs:complexType>
        </xs:element>
    </xs:sequence>
</xs:complexType>
<xs:complexType name="organisationType">
    <xs:sequence>
        <xs:element ref="ns1:ihiNumber" minOccurs="1"
maxOccurs="1"/>
        <xs:element name="name" type="xs:string" minOccurs="1"
maxOccurs="unbounded"/>
        <xs:element name="organisationService"
type="ns1:organisationServiceType" minOccurs="1" maxOccurs="unbounded"/>
        <xs:element name="participatingOrganisation" minOccurs="0"
maxOccurs="unbounded">
            <xs:complexType>
                <xs:sequence>
                    <xs:element ref="ns1:ihiNumber"
minOccurs="1" maxOccurs="1"/>
                    <xs:element name="name"
type="xs:string" minOccurs="1" maxOccurs="unbounded"/>
                    <xs:element name="organisationService"
type="ns1:organisationServiceType" minOccurs="1" maxOccurs="unbounded"/>
                </xs:sequence>
            </xs:complexType>
        </xs:element>
    </xs:sequence>
</xs:complexType>
<xs:complexType name="participantDetailsType">
    <xs:sequence>
        <xs:element name="providerID" minOccurs="0" maxOccurs="1">
            <xs:simpleType>
                <xs:restriction base="xs:string"/>
            </xs:simpleType>
        </xs:element>
    </xs:sequence>
</xs:complexType>

```

```

        </xs:simpleType>
      </xs:element>
      <xs:element name="providerName" type="xs:string"
minOccurs="0" maxOccurs="1"/>
      <xs:element name="accessingHPIO" minOccurs="0"
maxOccurs="1">
        <xs:simpleType>
          <xs:restriction base="xs:string"/>
        </xs:simpleType>
      </xs:element>
      <xs:element name="accessingHPIOName" minOccurs="0"
maxOccurs="1">
        <xs:simpleType>
          <xs:restriction base="xs:string"/>
        </xs:simpleType>
      </xs:element>
      <xs:element name="participatingHPIO" minOccurs="0"
maxOccurs="1">
        <xs:simpleType>
          <xs:restriction base="xs:string"/>
        </xs:simpleType>
      </xs:element>
      <xs:element name="participatingHPIOName" type="xs:string"
minOccurs="0" maxOccurs="1"/>
      <xs:element name="userID" type="xs:string" minOccurs="0"
maxOccurs="1"/>
      <xs:element name="userName" type="xs:string" minOccurs="0"
maxOccurs="1"/>
      <xs:element name="displayRole" minOccurs="0"
maxOccurs="1">
        <xs:simpleType>
          <xs:restriction base="xs:string"/>
        </xs:simpleType>
      </xs:element>
    </xs:sequence>
  </xs:complexType>
  <xs:complexType name="accessedEntityType">
    <xs:sequence>
      <xs:element ref="ns1:ihiNumber" minOccurs="0"
maxOccurs="1"/>
      <xs:element name="ihiName" type="xs:string" minOccurs="0"
maxOccurs="1"/>
      <xs:element name="subjectType" type="xs:string"
minOccurs="0" maxOccurs="1"/>
      <xs:element name="subject" type="xs:string" minOccurs="0"
maxOccurs="1"/>
    </xs:sequence>
  </xs:complexType>
  <xs:complexType name="participantActionType">
    <xs:sequence>
      <xs:element name="actionType" minOccurs="0" maxOccurs="1">
        <xs:simpleType>
          <xs:restriction base="xs:string">
            <xs:enumeration value="Create"/>
            <xs:enumeration value="Read"/>
            <xs:enumeration value="Update"/>
            <xs:enumeration value="Delete"/>
          </xs:restriction>
        </xs:simpleType>
      </xs:element>
      <xs:element name="operationPerformed" type="xs:string"
minOccurs="0" maxOccurs="1"/>
      <xs:element name="reason" minOccurs="0" maxOccurs="1">
        <xs:simpleType>
          <xs:restriction base="xs:string">
            <xs:enumeration
value="IncorrectIdentity"/>
            <xs:enumeration
value="MedicalInaccuracy"/>
            <xs:enumeration
value="ElectToRemove"/>
            <xs:enumeration
value="IHIStatusIsDeceased"/>
          </xs:restriction>
        </xs:simpleType>
      </xs:element>
    </xs:sequence>
  </xs:complexType>

```

```

value="NoLegallyAppointmentAuthorised"/>
value="NoOwnershipOfPCEHR"/>
value="IHINotVerified"/>
value="TermsAndConditionsWereNotAccepted"/>
value="WithdrawalFromParticipation"/>
</xs:restriction>
</xs:simpleType>
</xs:element>
<xs:element name="approvalDateTime" type="xs:dateTime"
minOccurs="0" maxOccurs="1"/>
<xs:element name="approvalRole" type="xs:string"
minOccurs="0" maxOccurs="1"/>
<xs:element name="approvalName" type="xs:string"
minOccurs="0" maxOccurs="1"/>
<xs:element name="statusPriorDeactivation"
type="xs:string" minOccurs="0" maxOccurs="1"/>
</xs:sequence>
</xs:complexType>
<xs:element name="ihiNumber">
<xs:simpleType>
<xs:restriction base="xs:string">
<xs:minLength value="16"/>
<xs:maxLength value="16"/>
</xs:restriction>
</xs:simpleType>
</xs:element>
<xs:element name="militaryHealthNumber" type="xs:string"/>
<xs:element name="dateAccuracyIndicatorType">
<xs:simpleType>
<xs:restriction base="xs:string">
<xs:length value="3"/>
<xs:enumeration value="AAA">
<xs:annotation>
<xs:documentation>Accurate day,
accurate month, accurate year</xs:documentation>
</xs:annotation>
</xs:enumeration>
<xs:enumeration value="AAE">
<xs:annotation>
<xs:documentation>Accurate day,
accurate month, estimated year</xs:documentation>
</xs:annotation>
</xs:enumeration>
<xs:enumeration value="AAU">
<xs:annotation>
<xs:documentation>Accurate day,
accurate month, unknown year</xs:documentation>
</xs:annotation>
</xs:enumeration>
<xs:enumeration value="AEA">
<xs:annotation>
<xs:documentation>Accurate day,
estimated month, accurate year</xs:documentation>
</xs:annotation>
</xs:enumeration>
<xs:enumeration value="AEE">
<xs:annotation>
<xs:documentation>Accurate day,
estimated month, estimated year</xs:documentation>
</xs:annotation>
</xs:enumeration>
<xs:enumeration value="AEU">
<xs:annotation>
<xs:documentation>Accurate day,
estimated month, unknown year</xs:documentation>
</xs:annotation>
</xs:enumeration>

```

```

        <xs:enumeration value="AUA">
            <xs:annotation>
                <xs:documentation>Accurate day,
unknown month, accurate year</xs:documentation>
            </xs:annotation>
        </xs:enumeration>
        <xs:enumeration value="AUE">
            <xs:annotation>
                <xs:documentation>Accurate day,
unknown month, estimated year</xs:documentation>
            </xs:annotation>
        </xs:enumeration>
        <xs:enumeration value="AUU">
            <xs:annotation>
                <xs:documentation>Accurate day,
unknown month, unknown year</xs:documentation>
            </xs:annotation>
        </xs:enumeration>
        <xs:enumeration value="EAA">
            <xs:annotation>
                <xs:documentation>Estimated day,
accurate month, accurate year</xs:documentation>
            </xs:annotation>
        </xs:enumeration>
        <xs:enumeration value="EAE">
            <xs:annotation>
                <xs:documentation>Estimated day,
accurate month, estimated year</xs:documentation>
            </xs:annotation>
        </xs:enumeration>
        <xs:enumeration value="EAU">
            <xs:annotation>
                <xs:documentation>Estimated day,
accurate month, unknown year</xs:documentation>
            </xs:annotation>
        </xs:enumeration>
        <xs:enumeration value="EEA">
            <xs:annotation>
                <xs:documentation>Estimated day,
estimated month, accurate year</xs:documentation>
            </xs:annotation>
        </xs:enumeration>
        <xs:enumeration value="EEE">
            <xs:annotation>
                <xs:documentation>Estimated day,
estimated month, estimated year</xs:documentation>
            </xs:annotation>
        </xs:enumeration>
        <xs:enumeration value="EEU">
            <xs:annotation>
                <xs:documentation>Estimated day,
estimated month, unknown year</xs:documentation>
            </xs:annotation>
        </xs:enumeration>
        <xs:enumeration value="EUA">
            <xs:annotation>
                <xs:documentation>Estimated day,
unknown month, accurate year</xs:documentation>
            </xs:annotation>
        </xs:enumeration>
        <xs:enumeration value="EUE">
            <xs:annotation>
                <xs:documentation>Estimated day,
unknown month, estimated year</xs:documentation>
            </xs:annotation>
        </xs:enumeration>
        <xs:enumeration value="EUU">
            <xs:annotation>
                <xs:documentation>Estimated day,
unknown month, unknown year</xs:documentation>
            </xs:annotation>
        </xs:enumeration>
        <xs:enumeration value="UAA">
            <xs:annotation>

```

```

                <xs:documentation>Unknown day,
accurate month, accurate year</xs:documentation>
                </xs:annotation>
            </xs:enumeration>
            <xs:enumeration value="UAE">
                <xs:annotation>
                    <xs:documentation>Unknown day,
accurate month, estimated year</xs:documentation>
                </xs:annotation>
            </xs:enumeration>
            <xs:enumeration value="UAU">
                <xs:annotation>
                    <xs:documentation>Unknown day,
accurate month, unknown year</xs:documentation>
                </xs:annotation>
            </xs:enumeration>
            <xs:enumeration value="UEA">
                <xs:annotation>
                    <xs:documentation>Unknown day,
estimated month, accurate year</xs:documentation>
                </xs:annotation>
            </xs:enumeration>
            <xs:enumeration value="UEE">
                <xs:annotation>
                    <xs:documentation>Unknown day,
estimated month, estimated year</xs:documentation>
                </xs:annotation>
            </xs:enumeration>
            <xs:enumeration value="UEU">
                <xs:annotation>
                    <xs:documentation>Unknown day,
estimated month, unknown year</xs:documentation>
                </xs:annotation>
            </xs:enumeration>
            <xs:enumeration value="UUA">
                <xs:annotation>
                    <xs:documentation>Unknown day, unknown
month, accurate year</xs:documentation>
                </xs:annotation>
            </xs:enumeration>
            <xs:enumeration value="UUE">
                <xs:annotation>
                    <xs:documentation>Unknown day, unknown
month, estimated year</xs:documentation>
                </xs:annotation>
            </xs:enumeration>
            <xs:enumeration value="UUU">
                <xs:annotation>
                    <xs:documentation>Unknown day, unknown
month, unknown year</xs:documentation>
                </xs:annotation>
            </xs:enumeration>
        </xs:restriction>
    </xs:simpleType>
</xs:element>
</xs:schema>

```

A.1.6 XML Schema - PCEHR_CommonTypes_Supplementary.xsd

```

<?xml version="1.0" encoding="UTF-8"?>
<!--Version 1.0 issued 24 April 2012-->
<xsd:schema xmlns:xsd="http://www.w3.org/2001/XMLSchema"
xmlns="http://ns.electronichealth.net.au/pcehr/xsd/common/CommonCoreElements/1.0"
xmlns:tns="http://ns.electronichealth.net.au/pcehr/xsd/common/CommonCoreElements/1.0"
targetNamespace="http://ns.electronichealth.net.au/pcehr/xsd/common/CommonCoreElements/1.0" elementFormDefault="qualified"
attributeFormDefault="unqualified">

```



```

    <xsd:include schemaLocation="PCEHR_CommonTypes.xsd"/>
    <!--
===== ADDRESS TYPES =====
-->
    <xsd:complexType name="addressTypeSupp">
        <xsd:sequence>
            <xsd:element name="unstructuredAddress" minOccurs="0">
                <xsd:complexType>
                    <xsd:sequence>
                        <xsd:element
name="australianAddressLine" minOccurs="0">
                            <xsd:simpleType>
                                <xsd:restriction
base="xsd:string">
                                    <xsd:minLength
value="1"/>
                                    <xsd:maxLength
value="120"/>
                                </xsd:restriction>
                            </xsd:simpleType>
                        </xsd:element>
                        <xsd:element name="postcode"
type="tns:postcodeType"/>
                        <xsd:element name="suburb"
type="tns:suburbType"/>
                        <xsd:element name="state"
type="tns:stateType"/>
                    </xsd:sequence>
                </xsd:complexType>
            </xsd:element>
            <xsd:element name="australianStreetAddress"
type="tns:australianStreetAddressType" minOccurs="0"/>
            <xsd:element name="australianPostalAddress"
type="tns:australianPostalAddressType" minOccurs="0"/>
        </xsd:sequence>
    </xsd:complexType>
    <xsd:complexType name="australianPostalAddressType">
        <xsd:sequence>
            <xsd:element name="state" type="tns:stateType"/>
            <xsd:element name="postcode" type="tns:postcodeType"/>
            <xsd:element name="suburb" type="tns:suburbType"/>
            <xsd:element name="postalDeliveryGroup"
type="tns:postalDeliveryGroupType"/>
        </xsd:sequence>
    </xsd:complexType>
    <xsd:complexType name="postalDeliveryGroupType">
        <xsd:sequence>
            <xsd:element name="postalDeliveryType"
type="tns:postalDeliveryType"/>
            <xsd:element name="postalDeliveryNumber"
type="tns:postalDeliveryNumberType" minOccurs="0"/>
        </xsd:sequence>
    </xsd:complexType>
    <xsd:simpleType name="postalDeliveryType">
        <xsd:restriction base="xsd:string">
            <xsd:enumeration value="Care PO">
                <xsd:annotation>
                    <xsd:documentation>Care-of Post Office (also
known as Poste Restante)</xsd:documentation>
                </xsd:annotation>
            </xsd:enumeration>
            <xsd:enumeration value="CMA">
                <xsd:annotation>
                    <xsd:documentation>Community Mail
Agent</xsd:documentation>
                </xsd:annotation>
            </xsd:enumeration>
            <xsd:enumeration value="CMB">
                <xsd:annotation>
                    <xsd:documentation>Community Mail
Bag</xsd:documentation>
                </xsd:annotation>
            </xsd:enumeration>
            <xsd:enumeration value="GPO Box">

```

```

        <xsd:annotation>
            <xsd:documentation>General Post Office
Box</xsd:documentation>
        </xsd:annotation>
    </xsd:enumeration>
    <xsd:enumeration value="Locked Bag">
        <xsd:annotation>
            <xsd:documentation>Locked Mail Bag
Service</xsd:documentation>
        </xsd:annotation>
    </xsd:enumeration>
    <xsd:enumeration value="MS">
        <xsd:annotation>
            <xsd:documentation>Mail
Service</xsd:documentation>
        </xsd:annotation>
    </xsd:enumeration>
    <xsd:enumeration value="PO Box">
        <xsd:annotation>
            <xsd:documentation>Post Office
Box</xsd:documentation>
        </xsd:annotation>
    </xsd:enumeration>
    <xsd:enumeration value="POR">
        <xsd:annotation>
            <xsd:documentation>Post Restante (also known
as Care-of Post Office)</xsd:documentation>
        </xsd:annotation>
    </xsd:enumeration>
    <xsd:enumeration value="Private Bag">
        <xsd:annotation>
            <xsd:documentation>Private Mail Bag
Service</xsd:documentation>
        </xsd:annotation>
    </xsd:enumeration>
    <xsd:enumeration value="RSD">
        <xsd:annotation>
            <xsd:documentation>Roadside
Delivery</xsd:documentation>
        </xsd:annotation>
    </xsd:enumeration>
    <xsd:enumeration value="RMB">
        <xsd:annotation>
            <xsd:documentation>Roadside Mail
Box/Bag</xsd:documentation>
        </xsd:annotation>
    </xsd:enumeration>
    <xsd:enumeration value="RMS">
        <xsd:annotation>
            <xsd:documentation>Roadside Mail
Service</xsd:documentation>
        </xsd:annotation>
    </xsd:enumeration>
</xsd:restriction>
</xsd:simpleType>
<xsd:simpleType name="postalDeliveryNumberType">
    <xsd:restriction base="xsd:string">
        <xsd:minLength value="1"/>
        <xsd:maxLength value="11"/>
    </xsd:restriction>
</xsd:simpleType>
<xsd:complexType name="australianStreetAddressType">
    <xsd:sequence>
        <xsd:element name="state" type="tns:stateType"/>
        <xsd:element name="postcode" type="tns:postcodeType"/>
        <xsd:element name="suburb" type="tns:suburbType"/>
        <xsd:element name="addressSiteName"
type="tns:addressSiteNameType" minOccurs="0"/>
        <xsd:element name="unitGroup" type="tns:unitGroupType"
minOccurs="0"/>
        <xsd:element name="levelGroup" type="tns:levelGroupType"
minOccurs="0"/>
        <xsd:element name="lotNumber" type="tns:lotNumberType"
minOccurs="0"/>

```

```

        <xsd:element name="streetNumber"
type="tns:streetNumberType" minOccurs="0"/>
        <xsd:element name="streetName" type="tns:streetNameType"/>
        <xsd:element name="streetType" type="tns:streetType"
minOccurs="0"/>
        <xsd:element name="streetSuffix"
type="tns:streetSuffixType" minOccurs="0"/>
    </xsd:sequence>
</xsd:complexType>
<xsd:simpleType name="streetSuffixType">
    <xsd:restriction base="xsd:string">
        <xsd:enumeration value="CN">
            <xsd:annotation>
                <xsd:documentation>Central</xsd:documentation>
            </xsd:annotation>
        </xsd:enumeration>
        <xsd:enumeration value="E">
            <xsd:annotation>
                <xsd:documentation>East</xsd:documentation>
            </xsd:annotation>
        </xsd:enumeration>
        <xsd:enumeration value="EX">
            <xsd:annotation>
                <xsd:documentation>Extension</xsd:documentation>
            </xsd:annotation>
        </xsd:enumeration>
        <xsd:enumeration value="LR">
            <xsd:annotation>
                <xsd:documentation>Lower</xsd:documentation>
            </xsd:annotation>
        </xsd:enumeration>
        <xsd:enumeration value="N">
            <xsd:annotation>
                <xsd:documentation>North</xsd:documentation>
            </xsd:annotation>
        </xsd:enumeration>
        <xsd:enumeration value="NE">
            <xsd:annotation>
                <xsd:documentation>North
East</xsd:documentation>
            </xsd:annotation>
        </xsd:enumeration>
        <xsd:enumeration value="NW">
            <xsd:annotation>
                <xsd:documentation>North
West</xsd:documentation>
            </xsd:annotation>
        </xsd:enumeration>
        <xsd:enumeration value="S">
            <xsd:annotation>
                <xsd:documentation>South</xsd:documentation>
            </xsd:annotation>
        </xsd:enumeration>
        <xsd:enumeration value="SE">
            <xsd:annotation>
                <xsd:documentation>South
East</xsd:documentation>
            </xsd:annotation>
        </xsd:enumeration>
        <xsd:enumeration value="SW">
            <xsd:annotation>
                <xsd:documentation>South
West</xsd:documentation>
            </xsd:annotation>
        </xsd:enumeration>
        <xsd:enumeration value="UP">
            <xsd:annotation>
                <xsd:documentation>Upper</xsd:documentation>
            </xsd:annotation>
        </xsd:enumeration>
        <xsd:enumeration value="W">
            <xsd:annotation>

```

```

                <xsd:documentation>West</xsd:documentation>
            </xsd:annotation>
        </xsd:enumeration>
    </xsd:restriction>
</xsd:simpleType>
<xsd:simpleType name="streetType">
    <xsd:restriction base="xsd:string">
        <xsd:enumeration value="ACCS">
            <xsd:annotation>
                <xsd:documentation>ACCESS</xsd:documentation>
            </xsd:annotation>
        </xsd:enumeration>
        <xsd:enumeration value="ALLY">
            <xsd:annotation>
                <xsd:documentation>ALLEY</xsd:documentation>
            </xsd:annotation>
        </xsd:enumeration>
        <xsd:enumeration value="ALWY">
            <xsd:annotation>
                <xsd:documentation>ALLEYWAY</xsd:documentation>
            </xsd:annotation>
        </xsd:enumeration>
        <xsd:enumeration value="AMBL">
            <xsd:annotation>
                <xsd:documentation>AMBLE</xsd:documentation>
            </xsd:annotation>
        </xsd:enumeration>
        <xsd:enumeration value="ANCG">
            <xsd:annotation>
                <xsd:documentation>ANCHORAGE</xsd:documentation>
            </xsd:annotation>
        </xsd:enumeration>
        <xsd:enumeration value="APP">
            <xsd:annotation>
                <xsd:documentation>APPROACH</xsd:documentation>
            </xsd:annotation>
        </xsd:enumeration>
        <xsd:enumeration value="ARC">
            <xsd:annotation>
                <xsd:documentation>ARCADE</xsd:documentation>
            </xsd:annotation>
        </xsd:enumeration>
        <xsd:enumeration value="ART">
            <xsd:annotation>
                <xsd:documentation>ARTERY</xsd:documentation>
            </xsd:annotation>
        </xsd:enumeration>
        <xsd:enumeration value="AVE">
            <xsd:annotation>
                <xsd:documentation>AVENUE</xsd:documentation>
            </xsd:annotation>
        </xsd:enumeration>
        <xsd:enumeration value="BASN">
            <xsd:annotation>
                <xsd:documentation>BASIN</xsd:documentation>
            </xsd:annotation>
        </xsd:enumeration>
        <xsd:enumeration value="BCH">
            <xsd:annotation>
                <xsd:documentation>BEACH</xsd:documentation>
            </xsd:annotation>
        </xsd:enumeration>
        <xsd:enumeration value="BEND">
            <xsd:annotation>
                <xsd:documentation>BEND</xsd:documentation>
            </xsd:annotation>
        </xsd:enumeration>
        <xsd:enumeration value="BLK">
            <xsd:annotation>
                <xsd:documentation>BLOCK</xsd:documentation>
            </xsd:annotation>
        </xsd:enumeration>
    </xsd:restriction>
</xsd:simpleType>

```

```

    </xsd:enumeration>
    <xsd:enumeration value="BWLK">
      <xsd:annotation>

<xsd:documentation>BOARDWALK</xsd:documentation>
      </xsd:annotation>
    </xsd:enumeration>
    <xsd:enumeration value="BVD">
      <xsd:annotation>

<xsd:documentation>BOULEVARD</xsd:documentation>
      </xsd:annotation>
    </xsd:enumeration>
    <xsd:enumeration value="BRCE">
      <xsd:annotation>
        <xsd:documentation>BRACE</xsd:documentation>
      </xsd:annotation>
    </xsd:enumeration>
    <xsd:enumeration value="BRAE">
      <xsd:annotation>
        <xsd:documentation>BRAE</xsd:documentation>
      </xsd:annotation>
    </xsd:enumeration>
    <xsd:enumeration value="BRK">
      <xsd:annotation>
        <xsd:documentation>BREAK</xsd:documentation>
      </xsd:annotation>
    </xsd:enumeration>
    <xsd:enumeration value="BDGE">
      <xsd:annotation>
        <xsd:documentation>BRIDGE</xsd:documentation>
      </xsd:annotation>
    </xsd:enumeration>
    <xsd:enumeration value="BDWY">
      <xsd:annotation>

<xsd:documentation>BROADWAY</xsd:documentation>
      </xsd:annotation>
    </xsd:enumeration>
    <xsd:enumeration value="BROW">
      <xsd:annotation>
        <xsd:documentation>BROW</xsd:documentation>
      </xsd:annotation>
    </xsd:enumeration>
    <xsd:enumeration value="BYPA">
      <xsd:annotation>
        <xsd:documentation>BYPASS</xsd:documentation>
      </xsd:annotation>
    </xsd:enumeration>
    <xsd:enumeration value="BYWY">
      <xsd:annotation>
        <xsd:documentation>BYWAY</xsd:documentation>
      </xsd:annotation>
    </xsd:enumeration>
    <xsd:enumeration value="CAUS">
      <xsd:annotation>

<xsd:documentation>CAUSEWAY</xsd:documentation>
      </xsd:annotation>
    </xsd:enumeration>
    <xsd:enumeration value="CTR">
      <xsd:annotation>
        <xsd:documentation>CENTRE</xsd:documentation>
      </xsd:annotation>
    </xsd:enumeration>
    <xsd:enumeration value="CNWY">
      <xsd:annotation>

<xsd:documentation>CENTREWAY</xsd:documentation>
      </xsd:annotation>
    </xsd:enumeration>
    <xsd:enumeration value="CH">
      <xsd:annotation>
        <xsd:documentation>CHASE</xsd:documentation>

```

```

        </xsd:annotation>
    </xsd:enumeration>
    <xsd:enumeration value="CIR">
        <xsd:annotation>
            <xsd:documentation>CIRCLE</xsd:documentation>
        </xsd:annotation>
    </xsd:enumeration>
    <xsd:enumeration value="CLT">
        <xsd:annotation>

<xsd:documentation>CIRCLET</xsd:documentation>
        </xsd:annotation>
    </xsd:enumeration>
    <xsd:enumeration value="CCT">
        <xsd:annotation>

<xsd:documentation>CIRCUIT</xsd:documentation>
        </xsd:annotation>
    </xsd:enumeration>
    <xsd:enumeration value="CRCS">
        <xsd:annotation>
            <xsd:documentation>CIRCUS</xsd:documentation>
        </xsd:annotation>
    </xsd:enumeration>
    <xsd:enumeration value="CL">
        <xsd:annotation>
            <xsd:documentation>CLOSE</xsd:documentation>
        </xsd:annotation>
    </xsd:enumeration>
    <xsd:enumeration value="CLDE">
        <xsd:annotation>

<xsd:documentation>COLONNADE</xsd:documentation>
        </xsd:annotation>
    </xsd:enumeration>
    <xsd:enumeration value="CMMN">
        <xsd:annotation>
            <xsd:documentation>COMMON</xsd:documentation>
        </xsd:annotation>
    </xsd:enumeration>
    <xsd:enumeration value="CON">
        <xsd:annotation>

<xsd:documentation>CONCOURSE</xsd:documentation>
        </xsd:annotation>
    </xsd:enumeration>
    <xsd:enumeration value="CPS">
        <xsd:annotation>
            <xsd:documentation>COPSE</xsd:documentation>
        </xsd:annotation>
    </xsd:enumeration>
    <xsd:enumeration value="CNR">
        <xsd:annotation>
            <xsd:documentation>CORNER</xsd:documentation>
        </xsd:annotation>
    </xsd:enumeration>
    <xsd:enumeration value="CSO">
        <xsd:annotation>
            <xsd:documentation>CORSO</xsd:documentation>
        </xsd:annotation>
    </xsd:enumeration>
    <xsd:enumeration value="CT">
        <xsd:annotation>
            <xsd:documentation>COURT</xsd:documentation>
        </xsd:annotation>
    </xsd:enumeration>
    <xsd:enumeration value="CTYD">
        <xsd:annotation>

<xsd:documentation>COURTYARD</xsd:documentation>
        </xsd:annotation>
    </xsd:enumeration>
    <xsd:enumeration value="COVE">
        <xsd:annotation>

```

```

        <xsd:documentation>COVE</xsd:documentation>
      </xsd:annotation>
    </xsd:enumeration>
  <xsd:enumeration value="CRES">
    <xsd:annotation>
      <xsd:documentation>CRESCENT</xsd:documentation>
    </xsd:annotation>
  </xsd:enumeration>
  <xsd:enumeration value="CRST">
    <xsd:annotation>
      <xsd:documentation>CREST</xsd:documentation>
    </xsd:annotation>
  </xsd:enumeration>
  <xsd:enumeration value="CRSS">
    <xsd:annotation>
      <xsd:documentation>CROSS</xsd:documentation>
    </xsd:annotation>
  </xsd:enumeration>
  <xsd:enumeration value="CRSG">
    <xsd:annotation>
      <xsd:documentation>CROSSING</xsd:documentation>
    </xsd:annotation>
  </xsd:enumeration>
  <xsd:enumeration value="CRD">
    <xsd:annotation>
      <xsd:documentation>CROSSROAD</xsd:documentation>
    </xsd:annotation>
  </xsd:enumeration>
  <xsd:enumeration value="COWY">
    <xsd:annotation>
      <xsd:documentation>CROSSWAY</xsd:documentation>
    </xsd:annotation>
  </xsd:enumeration>
  <xsd:enumeration value="CUWY">
    <xsd:annotation>
      <xsd:documentation>CRUISEWAY</xsd:documentation>
    </xsd:annotation>
  </xsd:enumeration>
  <xsd:enumeration value="CDS">
    <xsd:annotation>
      <xsd:documentation>CUL-DE-
SAC</xsd:documentation>
    </xsd:annotation>
  </xsd:enumeration>
  <xsd:enumeration value="CTTG">
    <xsd:annotation>
      <xsd:documentation>CUTTING</xsd:documentation>
    </xsd:annotation>
  </xsd:enumeration>
  <xsd:enumeration value="DALE">
    <xsd:annotation>
      <xsd:documentation>DALE</xsd:documentation>
    </xsd:annotation>
  </xsd:enumeration>
  <xsd:enumeration value="DELL">
    <xsd:annotation>
      <xsd:documentation>DELL</xsd:documentation>
    </xsd:annotation>
  </xsd:enumeration>
  <xsd:enumeration value="DEVN">
    <xsd:annotation>
      <xsd:documentation>DEVIATION</xsd:documentation>
    </xsd:annotation>
  </xsd:enumeration>
  <xsd:enumeration value="DIP">
    <xsd:annotation>
      <xsd:documentation>DIP</xsd:documentation>
    </xsd:annotation>
  </xsd:enumeration>

```

```

        </xsd:annotation>
    </xsd:enumeration>
    <xsd:enumeration value="DSTR">
        <xsd:annotation>
            </xsd:annotation>
    </xsd:enumeration>
    <xsd:documentation>DISTRIBUTOR</xsd:documentation>
    </xsd:annotation>
    </xsd:enumeration>
    <xsd:enumeration value="DR">
        <xsd:annotation>
            <xsd:documentation>DRIVE</xsd:documentation>
        </xsd:annotation>
    </xsd:enumeration>
    <xsd:enumeration value="DRWY">
        <xsd:annotation>
            </xsd:annotation>
    </xsd:enumeration>
    <xsd:documentation>DRIVEWAY</xsd:documentation>
    </xsd:annotation>
    </xsd:enumeration>
    <xsd:enumeration value="EDGE">
        <xsd:annotation>
            <xsd:documentation>EDGE</xsd:documentation>
        </xsd:annotation>
    </xsd:enumeration>
    <xsd:enumeration value="ELB">
        <xsd:annotation>
            <xsd:documentation>ELBOW</xsd:documentation>
        </xsd:annotation>
    </xsd:enumeration>
    <xsd:enumeration value="END">
        <xsd:annotation>
            <xsd:documentation>END</xsd:documentation>
        </xsd:annotation>
    </xsd:enumeration>
    <xsd:enumeration value="ENT">
        <xsd:annotation>
            </xsd:annotation>
    </xsd:enumeration>
    <xsd:documentation>ENTRANCE</xsd:documentation>
    </xsd:annotation>
    </xsd:enumeration>
    <xsd:enumeration value="ESP">
        <xsd:annotation>
            </xsd:annotation>
    </xsd:enumeration>
    <xsd:documentation>ESPLANADE</xsd:documentation>
    </xsd:annotation>
    </xsd:enumeration>
    <xsd:enumeration value="EST">
        <xsd:annotation>
            <xsd:documentation>ESTATE</xsd:documentation>
        </xsd:annotation>
    </xsd:enumeration>
    <xsd:enumeration value="EXP">
        <xsd:annotation>
            </xsd:annotation>
    </xsd:enumeration>
    <xsd:documentation>EXPRESSWAY</xsd:documentation>
    </xsd:annotation>
    </xsd:enumeration>
    <xsd:enumeration value="EXTN">
        <xsd:annotation>
            </xsd:annotation>
    </xsd:enumeration>
    <xsd:documentation>EXTENSION</xsd:documentation>
    </xsd:annotation>
    </xsd:enumeration>
    <xsd:enumeration value="FAWY">
        <xsd:annotation>
            </xsd:annotation>
    </xsd:enumeration>
    <xsd:documentation>FAIRWAY</xsd:documentation>
    </xsd:annotation>
    </xsd:enumeration>
    <xsd:enumeration value="FTRK">
        <xsd:annotation>
            <xsd:documentation>FIRE
TRACK</xsd:documentation>
        </xsd:annotation>
    </xsd:enumeration>

```



```

</xsd:enumeration>
<xsd:enumeration value="FITR">
  <xsd:annotation>
</xsd:annotation>
<xsd:documentation>FIRETRAIL</xsd:documentation>
  </xsd:annotation>
</xsd:enumeration>
<xsd:enumeration value="FLAT">
  <xsd:annotation>
    <xsd:documentation>FLAT</xsd:documentation>
  </xsd:annotation>
</xsd:enumeration>
<xsd:enumeration value="FOLW">
  <xsd:annotation>
    <xsd:documentation>FOLLOW</xsd:documentation>
  </xsd:annotation>
</xsd:enumeration>
<xsd:enumeration value="FTWY">
  <xsd:annotation>
</xsd:annotation>
</xsd:enumeration>
<xsd:documentation>FOOTWAY</xsd:documentation>
  </xsd:annotation>
</xsd:enumeration>
<xsd:enumeration value="FSHR">
  <xsd:annotation>
</xsd:annotation>
</xsd:enumeration>
<xsd:documentation>FORESHORE</xsd:documentation>
  </xsd:annotation>
</xsd:enumeration>
<xsd:enumeration value="FORM">
  <xsd:annotation>
</xsd:annotation>
</xsd:enumeration>
<xsd:documentation>FORMATION</xsd:documentation>
  </xsd:annotation>
</xsd:enumeration>
<xsd:enumeration value="FWY">
  <xsd:annotation>
</xsd:annotation>
</xsd:enumeration>
<xsd:documentation>FREEWAY</xsd:documentation>
  </xsd:annotation>
</xsd:enumeration>
<xsd:enumeration value="FRNT">
  <xsd:annotation>
    <xsd:documentation>FRONT</xsd:documentation>
  </xsd:annotation>
</xsd:enumeration>
<xsd:enumeration value="FRTG">
  <xsd:annotation>
</xsd:annotation>
</xsd:enumeration>
<xsd:documentation>FRONTAGE</xsd:documentation>
  </xsd:annotation>
</xsd:enumeration>
<xsd:enumeration value="GAP">
  <xsd:annotation>
    <xsd:documentation>GAP</xsd:documentation>
  </xsd:annotation>
</xsd:enumeration>
<xsd:enumeration value="GDN">
  <xsd:annotation>
    <xsd:documentation>GARDEN</xsd:documentation>
  </xsd:annotation>
</xsd:enumeration>
<xsd:enumeration value="GDNS">
  <xsd:annotation>
</xsd:annotation>
</xsd:enumeration>
<xsd:documentation>GARDENS</xsd:documentation>
  </xsd:annotation>
</xsd:enumeration>
<xsd:enumeration value="GTE">
  <xsd:annotation>
    <xsd:documentation>GATE</xsd:documentation>
  </xsd:annotation>
</xsd:enumeration>
<xsd:enumeration value="GTES">

```

```

        <xsd:annotation>
            <xsd:documentation>GATES</xsd:documentation>
        </xsd:annotation>
    </xsd:enumeration>
<xsd:enumeration value="GLD">
    <xsd:annotation>
        <xsd:documentation>GLADE</xsd:documentation>
    </xsd:annotation>
</xsd:enumeration>
<xsd:enumeration value="GLEN">
    <xsd:annotation>
        <xsd:documentation>GLEN</xsd:documentation>
    </xsd:annotation>
</xsd:enumeration>
<xsd:enumeration value="GRA">
    <xsd:annotation>
        <xsd:documentation>GRANGE</xsd:documentation>
    </xsd:annotation>
</xsd:enumeration>
<xsd:enumeration value="GRN">
    <xsd:annotation>
        <xsd:documentation>GREEN</xsd:documentation>
    </xsd:annotation>
</xsd:enumeration>
<xsd:enumeration value="GRND">
    <xsd:annotation>
        <xsd:documentation>GROUND</xsd:documentation>
    </xsd:annotation>
</xsd:enumeration>
<xsd:enumeration value="GR">
    <xsd:annotation>
        <xsd:documentation>GROVE</xsd:documentation>
    </xsd:annotation>
</xsd:enumeration>
<xsd:enumeration value="GLY">
    <xsd:annotation>
        <xsd:documentation>GULLY</xsd:documentation>
    </xsd:annotation>
</xsd:enumeration>
<xsd:enumeration value="HTS">
    <xsd:annotation>
        <xsd:documentation>
            <xsd:documentation>HEIGHTS</xsd:documentation>
        </xsd:documentation>
    </xsd:annotation>
</xsd:enumeration>
<xsd:enumeration value="HRD">
    <xsd:annotation>
        <xsd:documentation>
            <xsd:documentation>HIGHROAD</xsd:documentation>
        </xsd:documentation>
    </xsd:annotation>
</xsd:enumeration>
<xsd:enumeration value="HWY">
    <xsd:annotation>
        <xsd:documentation>
            <xsd:documentation>HIGHWAY</xsd:documentation>
        </xsd:documentation>
    </xsd:annotation>
</xsd:enumeration>
<xsd:enumeration value="HILL">
    <xsd:annotation>
        <xsd:documentation>
            <xsd:documentation>HILL</xsd:documentation>
        </xsd:documentation>
    </xsd:annotation>
</xsd:enumeration>
<xsd:enumeration value="INTG">
    <xsd:annotation>
        <xsd:documentation>
            <xsd:documentation>INTERCHANGE</xsd:documentation>
        </xsd:documentation>
    </xsd:annotation>
</xsd:enumeration>
<xsd:enumeration value="INTN">
    <xsd:annotation>
        <xsd:documentation>
            <xsd:documentation>INTERSECTION</xsd:documentation>
        </xsd:documentation>
    </xsd:annotation>
</xsd:enumeration>

```

```

        <xsd:enumeration value="JNC">
            <xsd:annotation>
                <xsd:documentation>JUNCTION</xsd:documentation>
            </xsd:annotation>
        </xsd:enumeration>
        <xsd:enumeration value="KEY">
            <xsd:annotation>
                <xsd:documentation>KEY</xsd:documentation>
            </xsd:annotation>
        </xsd:enumeration>
        <xsd:enumeration value="LDG">
            <xsd:annotation>
                <xsd:documentation>LANDING</xsd:documentation>
            </xsd:annotation>
        </xsd:enumeration>
        <xsd:enumeration value="LANE">
            <xsd:annotation>
                <xsd:documentation>LANE</xsd:documentation>
            </xsd:annotation>
        </xsd:enumeration>
        <xsd:enumeration value="LNWY">
            <xsd:annotation>
                <xsd:documentation>LANEWAY</xsd:documentation>
            </xsd:annotation>
        </xsd:enumeration>
        <xsd:enumeration value="LEES">
            <xsd:annotation>
                <xsd:documentation>LEES</xsd:documentation>
            </xsd:annotation>
        </xsd:enumeration>
        <xsd:enumeration value="LINE">
            <xsd:annotation>
                <xsd:documentation>LINE</xsd:documentation>
            </xsd:annotation>
        </xsd:enumeration>
        <xsd:enumeration value="LINK">
            <xsd:annotation>
                <xsd:documentation>LINK</xsd:documentation>
            </xsd:annotation>
        </xsd:enumeration>
        <xsd:enumeration value="LT">
            <xsd:annotation>
                <xsd:documentation>LITTLE</xsd:documentation>
            </xsd:annotation>
        </xsd:enumeration>
        <xsd:enumeration value="LKT">
            <xsd:annotation>
                <xsd:documentation>LOOKOUT</xsd:documentation>
            </xsd:annotation>
        </xsd:enumeration>
        <xsd:enumeration value="LOOP">
            <xsd:annotation>
                <xsd:documentation>LOOP</xsd:documentation>
            </xsd:annotation>
        </xsd:enumeration>
        <xsd:enumeration value="LWR">
            <xsd:annotation>
                <xsd:documentation>LOWER</xsd:documentation>
            </xsd:annotation>
        </xsd:enumeration>
        <xsd:enumeration value="MALL">
            <xsd:annotation>
                <xsd:documentation>MALL</xsd:documentation>
            </xsd:annotation>
        </xsd:enumeration>
        <xsd:enumeration value="MNDR">
            <xsd:annotation>
                <xsd:documentation>MEANDER</xsd:documentation>
            </xsd:annotation>
        </xsd:enumeration>

```

```

    </xsd:enumeration>
    <xsd:enumeration value="MEW">
      <xsd:annotation>
        <xsd:documentation>MEW</xsd:documentation>
      </xsd:annotation>
    </xsd:enumeration>
    <xsd:enumeration value="MEWS">
      <xsd:annotation>
        <xsd:documentation>MEWS</xsd:documentation>
      </xsd:annotation>
    </xsd:enumeration>
    <xsd:enumeration value="MWY">
      <xsd:annotation>

<xsd:documentation>MOTORWAY</xsd:documentation>
      </xsd:annotation>
    </xsd:enumeration>
    <xsd:enumeration value="MT">
      <xsd:annotation>
        <xsd:documentation>MOUNT</xsd:documentation>
      </xsd:annotation>
    </xsd:enumeration>
    <xsd:enumeration value="NOOK">
      <xsd:annotation>
        <xsd:documentation>NOOK</xsd:documentation>
      </xsd:annotation>
    </xsd:enumeration>
    <xsd:enumeration value="OTLK">
      <xsd:annotation>

<xsd:documentation>OUTLOOK</xsd:documentation>
      </xsd:annotation>
    </xsd:enumeration>
    <xsd:enumeration value="PDE">
      <xsd:annotation>
        <xsd:documentation>PARADE</xsd:documentation>
      </xsd:annotation>
    </xsd:enumeration>
    <xsd:enumeration value="PARK">
      <xsd:annotation>
        <xsd:documentation>PARK</xsd:documentation>
      </xsd:annotation>
    </xsd:enumeration>
    <xsd:enumeration value="PKLD">
      <xsd:annotation>

<xsd:documentation>PARKLANDS</xsd:documentation>
      </xsd:annotation>
    </xsd:enumeration>
    <xsd:enumeration value="PKWY">
      <xsd:annotation>

<xsd:documentation>PARKWAY</xsd:documentation>
      </xsd:annotation>
    </xsd:enumeration>
    <xsd:enumeration value="PART">
      <xsd:annotation>
        <xsd:documentation>PART</xsd:documentation>
      </xsd:annotation>
    </xsd:enumeration>
    <xsd:enumeration value="PASS">
      <xsd:annotation>
        <xsd:documentation>PASS</xsd:documentation>
      </xsd:annotation>
    </xsd:enumeration>
    <xsd:enumeration value="PATH">
      <xsd:annotation>
        <xsd:documentation>PATH</xsd:documentation>
      </xsd:annotation>
    </xsd:enumeration>
    <xsd:enumeration value="PHWY">
      <xsd:annotation>

<xsd:documentation>PATHWAY</xsd:documentation>

```

```

        </xsd:annotation>
    </xsd:enumeration>
    <xsd:enumeration value="PIAZ">
        <xsd:annotation>
            <xsd:documentation>PIAZZA</xsd:documentation>
        </xsd:annotation>
    </xsd:enumeration>
    <xsd:enumeration value="PL">
        <xsd:annotation>
            <xsd:documentation>PLACE</xsd:documentation>
        </xsd:annotation>
    </xsd:enumeration>
    <xsd:enumeration value="PLAT">
        <xsd:annotation>
            <xsd:documentation>PLATEAU</xsd:documentation>
        </xsd:annotation>
    </xsd:enumeration>
    <xsd:enumeration value="PLZA">
        <xsd:annotation>
            <xsd:documentation>PLAZA</xsd:documentation>
        </xsd:annotation>
    </xsd:enumeration>
    <xsd:enumeration value="PKT">
        <xsd:annotation>
            <xsd:documentation>POCKET</xsd:documentation>
        </xsd:annotation>
    </xsd:enumeration>
    <xsd:enumeration value="PNT">
        <xsd:annotation>
            <xsd:documentation>POINT</xsd:documentation>
        </xsd:annotation>
    </xsd:enumeration>
    <xsd:enumeration value="PORT">
        <xsd:annotation>
            <xsd:documentation>PORT</xsd:documentation>
        </xsd:annotation>
    </xsd:enumeration>
    <xsd:enumeration value="PROM">
        <xsd:annotation>
            <xsd:documentation>PROMENADE</xsd:documentation>
        </xsd:annotation>
    </xsd:enumeration>
    <xsd:enumeration value="QUAD">
        <xsd:annotation>
            <xsd:documentation>QUAD</xsd:documentation>
        </xsd:annotation>
    </xsd:enumeration>
    <xsd:enumeration value="QDGL">
        <xsd:annotation>
            <xsd:documentation>QUADRANGLE</xsd:documentation>
        </xsd:annotation>
    </xsd:enumeration>
    <xsd:enumeration value="QDRT">
        <xsd:annotation>
            <xsd:documentation>QUADRANT</xsd:documentation>
        </xsd:annotation>
    </xsd:enumeration>
    <xsd:enumeration value="QY">
        <xsd:annotation>
            <xsd:documentation>QUAY</xsd:documentation>
        </xsd:annotation>
    </xsd:enumeration>
    <xsd:enumeration value="QYS">
        <xsd:annotation>
            <xsd:documentation>QUAYS</xsd:documentation>
        </xsd:annotation>
    </xsd:enumeration>
    <xsd:enumeration value="RMBL">
        <xsd:annotation>
            <xsd:documentation>RAMBLE</xsd:documentation>
        </xsd:annotation>
    </xsd:enumeration>

```

```

        </xsd:annotation>
    </xsd:enumeration>
    <xsd:enumeration value="RAMP">
        <xsd:annotation>
            <xsd:documentation>RAMP</xsd:documentation>
        </xsd:annotation>
    </xsd:enumeration>
    <xsd:enumeration value="RNGE">
        <xsd:annotation>
            <xsd:documentation>RANGE</xsd:documentation>
        </xsd:annotation>
    </xsd:enumeration>
    <xsd:enumeration value="RCH">
        <xsd:annotation>
            <xsd:documentation>REACH</xsd:documentation>
        </xsd:annotation>
    </xsd:enumeration>
    <xsd:enumeration value="RES">
        <xsd:annotation>
            <xsd:documentation>RESERVE</xsd:documentation>
        </xsd:annotation>
    </xsd:enumeration>
    <xsd:enumeration value="REST">
        <xsd:annotation>
            <xsd:documentation>REST</xsd:documentation>
        </xsd:annotation>
    </xsd:enumeration>
    <xsd:enumeration value="RTT">
        <xsd:annotation>
            <xsd:documentation>RETREAT</xsd:documentation>
        </xsd:annotation>
    </xsd:enumeration>
    <xsd:enumeration value="RIDE">
        <xsd:annotation>
            <xsd:documentation>RIDE</xsd:documentation>
        </xsd:annotation>
    </xsd:enumeration>
    <xsd:enumeration value="RDGE">
        <xsd:annotation>
            <xsd:documentation>RIDGE</xsd:documentation>
        </xsd:annotation>
    </xsd:enumeration>
    <xsd:enumeration value="RGWY">
        <xsd:annotation>
            <xsd:documentation>RIDGEWAY</xsd:documentation>
        </xsd:annotation>
    </xsd:enumeration>
    <xsd:enumeration value="ROWY">
        <xsd:annotation>
            <xsd:documentation>RIGHT OF
WAY</xsd:documentation>
        </xsd:annotation>
    </xsd:enumeration>
    <xsd:enumeration value="RING">
        <xsd:annotation>
            <xsd:documentation>RING</xsd:documentation>
        </xsd:annotation>
    </xsd:enumeration>
    <xsd:enumeration value="RISE">
        <xsd:annotation>
            <xsd:documentation>RISE</xsd:documentation>
        </xsd:annotation>
    </xsd:enumeration>
    <xsd:enumeration value="RVR">
        <xsd:annotation>
            <xsd:documentation>RIVER</xsd:documentation>
        </xsd:annotation>
    </xsd:enumeration>
    <xsd:enumeration value="RVWY">
        <xsd:annotation>

```

```

<xsd:documentation>RIVERWAY</xsd:documentation>
  </xsd:annotation>
</xsd:enumeration>
<xsd:enumeration value="RVRA">
  <xsd:annotation>

<xsd:documentation>RIVIERA</xsd:documentation>
  </xsd:annotation>
</xsd:enumeration>
<xsd:enumeration value="RD">
  <xsd:annotation>
    <xsd:documentation>ROAD</xsd:documentation>
  </xsd:annotation>
</xsd:enumeration>
<xsd:enumeration value="RDS">
  <xsd:annotation>
    <xsd:documentation>ROADS</xsd:documentation>
  </xsd:annotation>
</xsd:enumeration>
<xsd:enumeration value="RDSB">
  <xsd:annotation>

<xsd:documentation>ROADSIDE</xsd:documentation>
  </xsd:annotation>
</xsd:enumeration>
<xsd:enumeration value="RDWY">
  <xsd:annotation>

<xsd:documentation>ROADWAY</xsd:documentation>
  </xsd:annotation>
</xsd:enumeration>
<xsd:enumeration value="RNDE">
  <xsd:annotation>
    <xsd:documentation>RONDE</xsd:documentation>
  </xsd:annotation>
</xsd:enumeration>
<xsd:enumeration value="RSBL">
  <xsd:annotation>

<xsd:documentation>ROSEBOWL</xsd:documentation>
  </xsd:annotation>
</xsd:enumeration>
<xsd:enumeration value="RTY">
  <xsd:annotation>
    <xsd:documentation>ROTARY</xsd:documentation>
  </xsd:annotation>
</xsd:enumeration>
<xsd:enumeration value="RND">
  <xsd:annotation>
    <xsd:documentation>ROUND</xsd:documentation>
  </xsd:annotation>
</xsd:enumeration>
<xsd:enumeration value="RTE">
  <xsd:annotation>
    <xsd:documentation>ROUTE</xsd:documentation>
  </xsd:annotation>
</xsd:enumeration>
<xsd:enumeration value="ROW">
  <xsd:annotation>
    <xsd:documentation>ROW</xsd:documentation>
  </xsd:annotation>
</xsd:enumeration>
<xsd:enumeration value="RUE">
  <xsd:annotation>
    <xsd:documentation>RUE</xsd:documentation>
  </xsd:annotation>
</xsd:enumeration>
<xsd:enumeration value="RUN">
  <xsd:annotation>
    <xsd:documentation>RUN</xsd:documentation>
  </xsd:annotation>
</xsd:enumeration>
<xsd:enumeration value="SWY">

```

```

        <xsd:annotation>
            <xsd:documentation>SERVICE
WAY</xsd:documentation>
        </xsd:annotation>
    </xsd:enumeration>
    <xsd:enumeration value="SHUN">
        <xsd:annotation>
            <xsd:documentation>SHUNT</xsd:documentation>
        </xsd:annotation>
    </xsd:enumeration>
    <xsd:enumeration value="SDNG">
        <xsd:annotation>
            <xsd:documentation>SIDING</xsd:documentation>
        </xsd:annotation>
    </xsd:enumeration>
    <xsd:enumeration value="SLPE">
        <xsd:annotation>
            <xsd:documentation>SLOPE</xsd:documentation>
        </xsd:annotation>
    </xsd:enumeration>
    <xsd:enumeration value="SND">
        <xsd:annotation>
            <xsd:documentation>SOUND</xsd:documentation>
        </xsd:annotation>
    </xsd:enumeration>
    <xsd:enumeration value="SPUR">
        <xsd:annotation>
            <xsd:documentation>SPUR</xsd:documentation>
        </xsd:annotation>
    </xsd:enumeration>
    <xsd:enumeration value="SQ">
        <xsd:annotation>
            <xsd:documentation>SQUARE</xsd:documentation>
        </xsd:annotation>
    </xsd:enumeration>
    <xsd:enumeration value="STRS">
        <xsd:annotation>
            <xsd:documentation>STAIRS</xsd:documentation>
        </xsd:annotation>
    </xsd:enumeration>
    <xsd:enumeration value="SHWY">
        <xsd:annotation>
            <xsd:documentation>STATE
HIGHWAY</xsd:documentation>
        </xsd:annotation>
    </xsd:enumeration>
    <xsd:enumeration value="STPS">
        <xsd:annotation>
            <xsd:documentation>STEPS</xsd:documentation>
        </xsd:annotation>
    </xsd:enumeration>
    <xsd:enumeration value="STRA">
        <xsd:annotation>
            <xsd:documentation>STRAND</xsd:documentation>
        </xsd:annotation>
    </xsd:enumeration>
    <xsd:enumeration value="ST">
        <xsd:annotation>
            <xsd:documentation>STREET</xsd:documentation>
        </xsd:annotation>
    </xsd:enumeration>
    <xsd:enumeration value="STRP">
        <xsd:annotation>
            <xsd:documentation>STRIP</xsd:documentation>
        </xsd:annotation>
    </xsd:enumeration>
    <xsd:enumeration value="SBWY">
        <xsd:annotation>
            <xsd:documentation>SUBWAY</xsd:documentation>
        </xsd:annotation>
    </xsd:enumeration>
    <xsd:enumeration value="TARN">
        <xsd:annotation>
            <xsd:documentation>TARN</xsd:documentation>

```



```

        </xsd:annotation>
    </xsd:enumeration>
    <xsd:enumeration value="TCE">
        <xsd:annotation>

<xsd:documentation>TERRACE</xsd:documentation>
        </xsd:annotation>
    </xsd:enumeration>
    <xsd:enumeration value="THOR">
        <xsd:annotation>

<xsd:documentation>THOROUGHFARE</xsd:documentation>
        </xsd:annotation>
    </xsd:enumeration>
    <xsd:enumeration value="TLWY">
        <xsd:annotation>

<xsd:documentation>TOLLWAY</xsd:documentation>
        </xsd:annotation>
    </xsd:enumeration>
    <xsd:enumeration value="TOP">
        <xsd:annotation>
            <xsd:documentation>TOP</xsd:documentation>
        </xsd:annotation>
    </xsd:enumeration>
    <xsd:enumeration value="TOR">
        <xsd:annotation>
            <xsd:documentation>TOR</xsd:documentation>
        </xsd:annotation>
    </xsd:enumeration>
    <xsd:enumeration value="TWRS">
        <xsd:annotation>
            <xsd:documentation>TOWERS</xsd:documentation>
        </xsd:annotation>
    </xsd:enumeration>
    <xsd:enumeration value="TRK">
        <xsd:annotation>
            <xsd:documentation>TRACK</xsd:documentation>
        </xsd:annotation>
    </xsd:enumeration>
    <xsd:enumeration value="TRL">
        <xsd:annotation>
            <xsd:documentation>TRAIL</xsd:documentation>
        </xsd:annotation>
    </xsd:enumeration>
    <xsd:enumeration value="TRLR">
        <xsd:annotation>

<xsd:documentation>TRAILER</xsd:documentation>
        </xsd:annotation>
    </xsd:enumeration>
    <xsd:enumeration value="TRI">
        <xsd:annotation>

<xsd:documentation>TRIANGLE</xsd:documentation>
        </xsd:annotation>
    </xsd:enumeration>
    <xsd:enumeration value="TKWY">
        <xsd:annotation>

<xsd:documentation>TRUNKWAY</xsd:documentation>
        </xsd:annotation>
    </xsd:enumeration>
    <xsd:enumeration value="TURN">
        <xsd:annotation>
            <xsd:documentation>TURN</xsd:documentation>
        </xsd:annotation>
    </xsd:enumeration>
    <xsd:enumeration value="UPAS">
        <xsd:annotation>

<xsd:documentation>UNDERPASS</xsd:documentation>
        </xsd:annotation>
    </xsd:enumeration>

```

```

        <xsd:enumeration value="UPR">
            <xsd:annotation>
                <xsd:documentation>UPPER</xsd:documentation>
            </xsd:annotation>
        </xsd:enumeration>
        <xsd:enumeration value="VALE">
            <xsd:annotation>
                <xsd:documentation>VALE</xsd:documentation>
            </xsd:annotation>
        </xsd:enumeration>
        <xsd:enumeration value="VDCT">
            <xsd:annotation>
                <xsd:documentation>VIADUCT</xsd:documentation>
            </xsd:annotation>
        </xsd:enumeration>
        <xsd:enumeration value="VIEW">
            <xsd:annotation>
                <xsd:documentation>VIEW</xsd:documentation>
            </xsd:annotation>
        </xsd:enumeration>
        <xsd:enumeration value="VLLS">
            <xsd:annotation>
                <xsd:documentation>VILLAS</xsd:documentation>
            </xsd:annotation>
        </xsd:enumeration>
        <xsd:enumeration value="VSTA">
            <xsd:annotation>
                <xsd:documentation>VISTA</xsd:documentation>
            </xsd:annotation>
        </xsd:enumeration>
        <xsd:enumeration value="WADE">
            <xsd:annotation>
                <xsd:documentation>WADE</xsd:documentation>
            </xsd:annotation>
        </xsd:enumeration>
        <xsd:enumeration value="WALK">
            <xsd:annotation>
                <xsd:documentation>WALK</xsd:documentation>
            </xsd:annotation>
        </xsd:enumeration>
        <xsd:enumeration value="WKWY">
            <xsd:annotation>
                <xsd:documentation>WALKWAY</xsd:documentation>
            </xsd:annotation>
        </xsd:enumeration>
        <xsd:enumeration value="WAY">
            <xsd:annotation>
                <xsd:documentation>WAY</xsd:documentation>
            </xsd:annotation>
        </xsd:enumeration>
        <xsd:enumeration value="WHRF">
            <xsd:annotation>
                <xsd:documentation>WHARF</xsd:documentation>
            </xsd:annotation>
        </xsd:enumeration>
        <xsd:enumeration value="WYND">
            <xsd:annotation>
                <xsd:documentation>WYND</xsd:documentation>
            </xsd:annotation>
        </xsd:enumeration>
        <xsd:enumeration value="YARD">
            <xsd:annotation>
                <xsd:documentation>YARD</xsd:documentation>
            </xsd:annotation>
        </xsd:enumeration>
    </xsd:restriction>
</xsd:simpleType>
<xsd:simpleType name="streetNameType">
    <xsd:restriction base="xsd:string">
        <xsd:minLength value="1"/>
        <xsd:maxLength value="30"/>
    </xsd:restriction>

```

```

</xsd:simpleType>
<xsd:simpleType name="streetNumberType">
  <xsd:restriction base="xsd:string">
    <xsd:minLength value="1"/>
    <xsd:maxLength value="12"/>
  </xsd:restriction>
</xsd:simpleType>
<xsd:simpleType name="lotNumberType">
  <xsd:restriction base="xsd:string">
    <xsd:minLength value="1"/>
    <xsd:maxLength value="15"/>
  </xsd:restriction>
</xsd:simpleType>
<xsd:complexType name="levelGroupType">
  <xsd:sequence>
    <xsd:element name="levelType" type="tns:levelType"/>
    <xsd:element name="levelNumber" type="tns:levelNumberType"
minOccurs="0"/>
  </xsd:sequence>
</xsd:complexType>
<xsd:simpleType name="levelNumberType">
  <xsd:restriction base="xsd:string">
    <xsd:minLength value="1"/>
    <xsd:maxLength value="4"/>
  </xsd:restriction>
</xsd:simpleType>
<xsd:simpleType name="levelType">
  <xsd:restriction base="xsd:string">
    <xsd:enumeration value="B">
      <xsd:annotation>

<xsd:documentation>Basement</xsd:documentation>
    </xsd:annotation>
    </xsd:enumeration>
    <xsd:enumeration value="FL">
      <xsd:annotation>
        <xsd:documentation>Floor</xsd:documentation>
      </xsd:annotation>
    </xsd:enumeration>
    <xsd:enumeration value="G">
      <xsd:annotation>
        <xsd:documentation>Ground</xsd:documentation>
      </xsd:annotation>
    </xsd:enumeration>
    <xsd:enumeration value="L">
      <xsd:annotation>
        <xsd:documentation>Level</xsd:documentation>
      </xsd:annotation>
    </xsd:enumeration>
    <xsd:enumeration value="LG">
      <xsd:annotation>
        <xsd:documentation>Lower
Ground</xsd:documentation>
      </xsd:annotation>
    </xsd:enumeration>
    <xsd:enumeration value="M">
      <xsd:annotation>

<xsd:documentation>Mezzanine</xsd:documentation>
    </xsd:annotation>
    </xsd:enumeration>
    <xsd:enumeration value="OD">
      <xsd:annotation>
        <xsd:documentation>Observation
Deck</xsd:documentation>
      </xsd:annotation>
    </xsd:enumeration>
    <xsd:enumeration value="P">
      <xsd:annotation>

<xsd:documentation>Parking</xsd:documentation>
    </xsd:annotation>
    </xsd:enumeration>
    <xsd:enumeration value="PTHS">

```

```

        <xsd:annotation>
<xsd:documentation>Penthouse</xsd:documentation>
        </xsd:annotation>
    </xsd:enumeration>
    <xsd:enumeration value="PLF">
        <xsd:annotation>
<xsd:documentation>Platform</xsd:documentation>
        </xsd:annotation>
    </xsd:enumeration>
    <xsd:enumeration value="PLZA">
        <xsd:annotation>
            <xsd:documentation>Plaza</xsd:documentation>
        </xsd:annotation>
    </xsd:enumeration>
    <xsd:enumeration value="PDM">
        <xsd:annotation>
            <xsd:documentation>Podium</xsd:documentation>
        </xsd:annotation>
    </xsd:enumeration>
    <xsd:enumeration value="RT">
        <xsd:annotation>
<xsd:documentation>Rooftop</xsd:documentation>
        </xsd:annotation>
    </xsd:enumeration>
    <xsd:enumeration value="SB">
        <xsd:annotation>
            <xsd:documentation>Sub
Basement</xsd:documentation>
        </xsd:annotation>
    </xsd:enumeration>
    <xsd:enumeration value="UG">
        <xsd:annotation>
            <xsd:documentation>Upper
Ground</xsd:documentation>
        </xsd:annotation>
    </xsd:enumeration>
</xsd:restriction>
</xsd:simpleType>
<xsd:complexType name="unitGroupType">
    <xsd:sequence>
        <xsd:element name="unitType" type="tns:unitType"/>
        <xsd:element name="unitNumber" type="tns:unitNumberType"
minOccurs="0"/>
    </xsd:sequence>
</xsd:complexType>
<xsd:simpleType name="unitNumberType">
    <xsd:restriction base="xsd:string">
        <xsd:minLength value="1"/>
        <xsd:maxLength value="6"/>
    </xsd:restriction>
</xsd:simpleType>
<xsd:simpleType name="unitType">
    <xsd:restriction base="xsd:string">
        <xsd:enumeration value="ANT">
            <xsd:annotation>
<xsd:documentation>Antenna</xsd:documentation>
            </xsd:annotation>
        </xsd:enumeration>
        <xsd:enumeration value="APT">
            <xsd:annotation>
<xsd:documentation>Apartment</xsd:documentation>
            </xsd:annotation>
        </xsd:enumeration>
        <xsd:enumeration value="ATM">
            <xsd:annotation>
                <xsd:documentation>Automated Teller
Machine</xsd:documentation>
            </xsd:annotation>
        </xsd:enumeration>
    </xsd:restriction>

```

```

        <xsd:enumeration value="BBQ">
            <xsd:annotation>

<xsd:documentation>Barbeque</xsd:documentation>
            </xsd:annotation>
        </xsd:enumeration>
        <xsd:enumeration value="BTSD">
            <xsd:annotation>

<xsd:documentation>Boatshed</xsd:documentation>
            </xsd:annotation>
        </xsd:enumeration>
        <xsd:enumeration value="BLDG">
            <xsd:annotation>

<xsd:documentation>Building</xsd:documentation>
            </xsd:annotation>
        </xsd:enumeration>
        <xsd:enumeration value="BNGW">
            <xsd:annotation>

<xsd:documentation>Bungalow</xsd:documentation>
            </xsd:annotation>
        </xsd:enumeration>
        <xsd:enumeration value="CAGE">
            <xsd:annotation>
                <xsd:documentation>Cage</xsd:documentation>
            </xsd:annotation>
        </xsd:enumeration>
        <xsd:enumeration value="CARP">
            <xsd:annotation>

<xsd:documentation>Carpark</xsd:documentation>
            </xsd:annotation>
        </xsd:enumeration>
        <xsd:enumeration value="CARS">
            <xsd:annotation>

<xsd:documentation>Carspace</xsd:documentation>
            </xsd:annotation>
        </xsd:enumeration>
        <xsd:enumeration value="CLUB">
            <xsd:annotation>
                <xsd:documentation>Club</xsd:documentation>
            </xsd:annotation>
        </xsd:enumeration>
        <xsd:enumeration value="COOL">
            <xsd:annotation>

<xsd:documentation>Coolroom</xsd:documentation>
            </xsd:annotation>
        </xsd:enumeration>
        <xsd:enumeration value="CTGE">
            <xsd:annotation>

<xsd:documentation>Cottage</xsd:documentation>
            </xsd:annotation>
        </xsd:enumeration>
        <xsd:enumeration value="DUP">
            <xsd:annotation>
                <xsd:documentation>Duplex</xsd:documentation>
            </xsd:annotation>
        </xsd:enumeration>
        <xsd:enumeration value="FY">
            <xsd:annotation>

<xsd:documentation>Factory</xsd:documentation>
            </xsd:annotation>
        </xsd:enumeration>
        <xsd:enumeration value="F">
            <xsd:annotation>
                <xsd:documentation>Flat</xsd:documentation>
            </xsd:annotation>
        </xsd:enumeration>

```

```

    <xsd:enumeration value="GRGE">
      <xsd:annotation>
        <xsd:documentation>Garage</xsd:documentation>
      </xsd:annotation>
    </xsd:enumeration>
    <xsd:enumeration value="HALL">
      <xsd:annotation>
        <xsd:documentation>Hall</xsd:documentation>
      </xsd:annotation>
    </xsd:enumeration>
    <xsd:enumeration value="HSE">
      <xsd:annotation>
        <xsd:documentation>House</xsd:documentation>
      </xsd:annotation>
    </xsd:enumeration>
    <xsd:enumeration value="KSK">
      <xsd:annotation>
        <xsd:documentation>Kiosk</xsd:documentation>
      </xsd:annotation>
    </xsd:enumeration>
    <xsd:enumeration value="LSE">
      <xsd:annotation>
        <xsd:documentation>Lease</xsd:documentation>
      </xsd:annotation>
    </xsd:enumeration>
    <xsd:enumeration value="LBBY">
      <xsd:annotation>
        <xsd:documentation>Lobby</xsd:documentation>
      </xsd:annotation>
    </xsd:enumeration>
    <xsd:enumeration value="LOFT">
      <xsd:annotation>
        <xsd:documentation>Loft</xsd:documentation>
      </xsd:annotation>
    </xsd:enumeration>
    <xsd:enumeration value="LOT">
      <xsd:annotation>
        <xsd:documentation>Lot</xsd:documentation>
      </xsd:annotation>
    </xsd:enumeration>
    <xsd:enumeration value="MSNT">
      <xsd:annotation>
        <xsd:documentation>Maisonette</xsd:documentation>
      </xsd:annotation>
    </xsd:enumeration>
    <xsd:enumeration value="MB">
      <xsd:annotation>
        <xsd:documentation>Marine
berth</xsd:documentation>
      </xsd:annotation>
    </xsd:enumeration>
    <xsd:enumeration value="OFF">
      <xsd:annotation>
        <xsd:documentation>Office</xsd:documentation>
      </xsd:annotation>
    </xsd:enumeration>
    <xsd:enumeration value="PTHS">
      <xsd:annotation>
        <xsd:documentation>Penthouse</xsd:documentation>
      </xsd:annotation>
    </xsd:enumeration>
    <xsd:enumeration value="RESV">
      <xsd:annotation>
        <xsd:documentation>Reserve</xsd:documentation>
      </xsd:annotation>
    </xsd:enumeration>
    <xsd:enumeration value="RM">
      <xsd:annotation>
        <xsd:documentation>Room</xsd:documentation>
      </xsd:annotation>
    </xsd:enumeration>

```

```

    <xsd:enumeration value="SHED">
      <xsd:annotation>
        <xsd:documentation>Shed</xsd:documentation>
      </xsd:annotation>
    </xsd:enumeration>
    <xsd:enumeration value="SHOP">
      <xsd:annotation>
        <xsd:documentation>Shop</xsd:documentation>
      </xsd:annotation>
    </xsd:enumeration>
    <xsd:enumeration value="SIGN">
      <xsd:annotation>
        <xsd:documentation>Sign</xsd:documentation>
      </xsd:annotation>
    </xsd:enumeration>
    <xsd:enumeration value="SITE">
      <xsd:annotation>
        <xsd:documentation>Site</xsd:documentation>
      </xsd:annotation>
    </xsd:enumeration>
    <xsd:enumeration value="SL">
      <xsd:annotation>
        <xsd:documentation>Stall</xsd:documentation>
      </xsd:annotation>
    </xsd:enumeration>
    <xsd:enumeration value="STOR">
      <xsd:annotation>
        <xsd:documentation>Store</xsd:documentation>
      </xsd:annotation>
    </xsd:enumeration>
    <xsd:enumeration value="STR">
      <xsd:annotation>
        <xsd:documentation>Strata
Unit</xsd:documentation>
      </xsd:annotation>
    </xsd:enumeration>
    <xsd:enumeration value="STU">
      <xsd:annotation>
        <xsd:documentation>Studio</xsd:documentation>
      </xsd:annotation>
    </xsd:enumeration>
    <xsd:enumeration value="SUBS">
      <xsd:annotation>

<xsd:documentation>Substation</xsd:documentation>
      </xsd:annotation>
    </xsd:enumeration>
    <xsd:enumeration value="SE">
      <xsd:annotation>
        <xsd:documentation>Suite</xsd:documentation>
      </xsd:annotation>
    </xsd:enumeration>
    <xsd:enumeration value="TNCY">
      <xsd:annotation>

<xsd:documentation>Tenancy</xsd:documentation>
      </xsd:annotation>
    </xsd:enumeration>
    <xsd:enumeration value="TWR">
      <xsd:annotation>
        <xsd:documentation>Tower</xsd:documentation>
      </xsd:annotation>
    </xsd:enumeration>
    <xsd:enumeration value="TNHS">
      <xsd:annotation>

<xsd:documentation>Townhouse</xsd:documentation>
      </xsd:annotation>
    </xsd:enumeration>
    <xsd:enumeration value="U">
      <xsd:annotation>
        <xsd:documentation>Unit</xsd:documentation>
      </xsd:annotation>
    </xsd:enumeration>

```

```

        <xsd:enumeration value="VLLA">
            <xsd:annotation>
                <xsd:documentation>Villa</xsd:documentation>
            </xsd:annotation>
        </xsd:enumeration>
        <xsd:enumeration value="WARD">
            <xsd:annotation>
                <xsd:documentation>Ward</xsd:documentation>
            </xsd:annotation>
        </xsd:enumeration>
        <xsd:enumeration value="WE">
            <xsd:annotation>

<xsd:documentation>Warehouse</xsd:documentation>
            </xsd:annotation>
        </xsd:enumeration>
        <xsd:enumeration value="WKSH">
            <xsd:annotation>

<xsd:documentation>Workshop</xsd:documentation>
            </xsd:annotation>
        </xsd:enumeration>
    </xsd:restriction>
</xsd:simpleType>
<xsd:simpleType name="addressSiteNameType">
    <xsd:restriction base="xsd:string">
        <xsd:minLength value="1"/>
        <xsd:maxLength value="30"/>
    </xsd:restriction>
</xsd:simpleType>
<xsd:simpleType name="postcodeType">
    <xsd:restriction base="xsd:string">
        <xsd:minLength value="1"/>
        <xsd:maxLength value="4"/>
    </xsd:restriction>
</xsd:simpleType>
<xsd:simpleType name="suburbType">
    <xsd:restriction base="xsd:string">
        <xsd:minLength value="1"/>
        <xsd:maxLength value="50"/>
    </xsd:restriction>
</xsd:simpleType>
<xsd:simpleType name="stateType">
    <xsd:restriction base="xsd:string">
        <xsd:enumeration value="ACT">
            <xsd:annotation>
                <xsd:documentation>Australian Capital
Territory</xsd:documentation>
            </xsd:annotation>
        </xsd:enumeration>
        <xsd:enumeration value="NSW">
            <xsd:annotation>
                <xsd:documentation>New South
Wales</xsd:documentation>
            </xsd:annotation>
        </xsd:enumeration>
        <xsd:enumeration value="NT">
            <xsd:annotation>
                <xsd:documentation>Northern
Territory</xsd:documentation>
            </xsd:annotation>
        </xsd:enumeration>
        <xsd:enumeration value="QLD">
            <xsd:annotation>

<xsd:documentation>Queensland</xsd:documentation>
            </xsd:annotation>
        </xsd:enumeration>
        <xsd:enumeration value="SA">
            <xsd:annotation>
                <xsd:documentation>South
Australia</xsd:documentation>
            </xsd:annotation>
        </xsd:enumeration>
    </xsd:restriction>

```



```

        <xsd:enumeration value="TAS">
            <xsd:annotation>

<xsd:documentation>Tasmania</xsd:documentation>
            </xsd:annotation>
        </xsd:enumeration>
        <xsd:enumeration value="VIC">
            <xsd:annotation>

<xsd:documentation>Victoria</xsd:documentation>
            </xsd:annotation>
        </xsd:enumeration>
        <xsd:enumeration value="WA">
            <xsd:annotation>
                <xsd:documentation>Western
Australia</xsd:documentation>
            </xsd:annotation>
        </xsd:enumeration>
    </xsd:restriction>
</xsd:simpleType>
<!--
===== IDENTIFIER TYPES
=====
-->
    <xsd:simpleType name="ihiNumberType">
        <xsd:restriction base="xsd:string">
            <xsd:minLength value="16"/>
            <xsd:maxLength value="16"/>
        </xsd:restriction>
    </xsd:simpleType>
    <xsd:simpleType name="IDType">
        <xsd:restriction base="xsd:string">
            <xsd:length value="3"/>
            <xsd:enumeration value="IHI"/>
            <xsd:enumeration value="MCA"/>
            <xsd:enumeration value="DVA"/>
        </xsd:restriction>
    </xsd:simpleType>
    <xsd:simpleType name="IDNumber">
        <xsd:restriction base="xsd:string">
            <xsd:maxLength value="20"/>
            <xsd:whiteSpace value="collapse"/>
        </xsd:restriction>
    </xsd:simpleType>
    <xsd:simpleType name="hpioNumber">
        <xsd:restriction base="xsd:string">
            <xsd:minLength value="16"/>
            <xsd:maxLength value="16"/>
        </xsd:restriction>
    </xsd:simpleType>
<!--
===== DATE TYPES =====
-->
    <xsd:simpleType name="dateAccuracyIndicatorType">
        <xsd:restriction base="xsd:string">
            <xsd:length value="3"/>
            <xsd:enumeration value="AAA">
                <xsd:annotation>
                    <xsd:documentation>Accurate day, accurate
month, accurate year</xsd:documentation>
                </xsd:annotation>
            </xsd:enumeration>
            <xsd:enumeration value="AAE">
                <xsd:annotation>
                    <xsd:documentation>Accurate day, accurate
month, estimated year</xsd:documentation>
                </xsd:annotation>
            </xsd:enumeration>
            <xsd:enumeration value="AAU">
                <xsd:annotation>
                    <xsd:documentation>Accurate day, accurate
month, unknown year</xsd:documentation>
                </xsd:annotation>
            </xsd:enumeration>
        </xsd:restriction>
    </xsd:simpleType>

```

```

        <xsd:enumeration value="AEA">
            <xsd:annotation>
                <xsd:documentation>Accurate day, estimated
month, accurate year</xsd:documentation>
            </xsd:annotation>
        </xsd:enumeration>
        <xsd:enumeration value="AEE">
            <xsd:annotation>
                <xsd:documentation>Accurate day, estimated
month, estimated year</xsd:documentation>
            </xsd:annotation>
        </xsd:enumeration>
        <xsd:enumeration value="AEU">
            <xsd:annotation>
                <xsd:documentation>Accurate day, estimated
month, unknown year</xsd:documentation>
            </xsd:annotation>
        </xsd:enumeration>
        <xsd:enumeration value="AUA">
            <xsd:annotation>
                <xsd:documentation>Accurate day, unknown
month, accurate year</xsd:documentation>
            </xsd:annotation>
        </xsd:enumeration>
        <xsd:enumeration value="AUE">
            <xsd:annotation>
                <xsd:documentation>Accurate day, unknown
month, estimated year</xsd:documentation>
            </xsd:annotation>
        </xsd:enumeration>
        <xsd:enumeration value="AUU">
            <xsd:annotation>
                <xsd:documentation>Accurate day, unknown
month, unknown year</xsd:documentation>
            </xsd:annotation>
        </xsd:enumeration>
        <xsd:enumeration value="EAA">
            <xsd:annotation>
                <xsd:documentation>Estimated day, accurate
month, accurate year</xsd:documentation>
            </xsd:annotation>
        </xsd:enumeration>
        <xsd:enumeration value="EAE">
            <xsd:annotation>
                <xsd:documentation>Estimated day, accurate
month, estimated year</xsd:documentation>
            </xsd:annotation>
        </xsd:enumeration>
        <xsd:enumeration value="EAU">
            <xsd:annotation>
                <xsd:documentation>Estimated day, accurate
month, unknown year</xsd:documentation>
            </xsd:annotation>
        </xsd:enumeration>
        <xsd:enumeration value="EEA">
            <xsd:annotation>
                <xsd:documentation>Estimated day, estimated
month, accurate year</xsd:documentation>
            </xsd:annotation>
        </xsd:enumeration>
        <xsd:enumeration value="EEE">
            <xsd:annotation>
                <xsd:documentation>Estimated day, estimated
month, estimated year</xsd:documentation>
            </xsd:annotation>
        </xsd:enumeration>
        <xsd:enumeration value="EEU">
            <xsd:annotation>
                <xsd:documentation>Estimated day, estimated
month, unknown year</xsd:documentation>
            </xsd:annotation>
        </xsd:enumeration>
        <xsd:enumeration value="EUA">
            <xsd:annotation>

```

```

                <xsd:documentation>Estimated day, unknown
month, accurate year</xsd:documentation>
                </xsd:annotation>
            </xsd:enumeration>
            <xsd:enumeration value="EUE">
                <xsd:annotation>
                    <xsd:documentation>Estimated day, unknown
month, estimated year</xsd:documentation>
                </xsd:annotation>
            </xsd:enumeration>
            <xsd:enumeration value="EUU">
                <xsd:annotation>
                    <xsd:documentation>Estimated day, unknown
month, unknown year</xsd:documentation>
                </xsd:annotation>
            </xsd:enumeration>
            <xsd:enumeration value="UAA">
                <xsd:annotation>
                    <xsd:documentation>Unknown day, accurate
month, accurate year</xsd:documentation>
                </xsd:annotation>
            </xsd:enumeration>
            <xsd:enumeration value="UAE">
                <xsd:annotation>
                    <xsd:documentation>Unknown day, accurate
month, estimated year</xsd:documentation>
                </xsd:annotation>
            </xsd:enumeration>
            <xsd:enumeration value="UAU">
                <xsd:annotation>
                    <xsd:documentation>Unknown day, accurate
month, unknown year</xsd:documentation>
                </xsd:annotation>
            </xsd:enumeration>
            <xsd:enumeration value="UEA">
                <xsd:annotation>
                    <xsd:documentation>Unknown day, estimated
month, accurate year</xsd:documentation>
                </xsd:annotation>
            </xsd:enumeration>
            <xsd:enumeration value="UEE">
                <xsd:annotation>
                    <xsd:documentation>Unknown day, estimated
month, estimated year</xsd:documentation>
                </xsd:annotation>
            </xsd:enumeration>
            <xsd:enumeration value="UEU">
                <xsd:annotation>
                    <xsd:documentation>Unknown day, estimated
month, unknown year</xsd:documentation>
                </xsd:annotation>
            </xsd:enumeration>
            <xsd:enumeration value="UUA">
                <xsd:annotation>
                    <xsd:documentation>Unknown day, unknown
month, accurate year</xsd:documentation>
                </xsd:annotation>
            </xsd:enumeration>
            <xsd:enumeration value="UUE">
                <xsd:annotation>
                    <xsd:documentation>Unknown day, unknown
month, estimated year</xsd:documentation>
                </xsd:annotation>
            </xsd:enumeration>
            <xsd:enumeration value="UUU">
                <xsd:annotation>
                    <xsd:documentation>Unknown day, unknown
month, unknown year</xsd:documentation>
                </xsd:annotation>
            </xsd:enumeration>
        </xsd:restriction>
    </xsd:simpleType>
    <!--
===== NAME TYPES =====

```

```

-->
  <xsd:complexType name="nameTypeSupp">
    <xsd:sequence>
      <xsd:element name="nameTitle" type="nameTitle"
minOccurs="0" maxOccurs="1"/>
      <xsd:element name="familyName">
        <xsd:simpleType>
          <xsd:restriction base="xsd:string">
            <xsd:minLength value="1"/>
            <xsd:maxLength value="40"/>
          </xsd:restriction>
        </xsd:simpleType>
      </xsd:element>
      <xsd:element name="givenName" minOccurs="0" maxOccurs="2">
        <xsd:simpleType>
          <xsd:restriction base="xsd:string">
            <xsd:minLength value="1"/>
            <xsd:maxLength value="40"/>
          </xsd:restriction>
        </xsd:simpleType>
      </xsd:element>
      <xsd:element name="nameSuffix" type="nameSuffix"
minOccurs="0"/>
      <xsd:element name="usage" type="usage" minOccurs="0"/>
      <xsd:element name="preferred" type="preferred"
minOccurs="0"/>
      <xsd:element name="conditionalUse" type="conditionalUse"
minOccurs="0"/>
    </xsd:sequence>
  </xsd:complexType>
  <xsd:simpleType name="nameTitle">
    <xsd:restriction base="xsd:string">
      <xsd:enumeration value="ABBOT"/>
      <xsd:enumeration value="AB"/>
      <xsd:enumeration value="ADML"/>
      <xsd:enumeration value="ACM"/>
      <xsd:enumeration value="AIRCDRE"/>
      <xsd:enumeration value="AM"/>
      <xsd:enumeration value="AVM"/>
      <xsd:enumeration value="AC"/>
      <xsd:enumeration value="ACW"/>
      <xsd:enumeration value="ALD"/>
      <xsd:enumeration value="AMBSR"/>
      <xsd:enumeration value="ARCHBISHOP"/>
      <xsd:enumeration value="ARCHDEACON"/>
      <xsd:enumeration value="ASSOC PROF"/>
      <xsd:enumeration value="BARON"/>
      <xsd:enumeration value="BARONESS"/>
      <xsd:enumeration value="BISHOP"/>
      <xsd:enumeration value="BDR"/>
      <xsd:enumeration value="BRIG"/>
      <xsd:enumeration value="BR"/>
      <xsd:enumeration value="CDT"/>
      <xsd:enumeration value="CANON"/>
      <xsd:enumeration value="CAPT"/>
      <xsd:enumeration value="CAPT, RAN"/>
      <xsd:enumeration value="CARDNL"/>
      <xsd:enumeration value="CHAP"/>
      <xsd:enumeration value="CPO"/>
      <xsd:enumeration value="COL"/>
      <xsd:enumeration value="CMDR"/>
      <xsd:enumeration value="CMM"/>
      <xsd:enumeration value="CDRE"/>
      <xsd:enumeration value="CONST"/>
      <xsd:enumeration value="CONSUL"/>
      <xsd:enumeration value="CPL"/>
      <xsd:enumeration value="COUNT"/>
      <xsd:enumeration value="COUNTESS"/>
      <xsd:enumeration value="DAME"/>
      <xsd:enumeration value="DEACON"/>
      <xsd:enumeration value="DEACONESS"/>
      <xsd:enumeration value="DEAN"/>
      <xsd:enumeration value="DEPUTY SUPT"/>
      <xsd:enumeration value="DIRECTOR"/>
    </xsd:restriction>
  </xsd:simpleType>

```

```

<xsd:enumeration value="DR"/>
<xsd:enumeration value="EARL"/>
<xsd:enumeration value="ENGR"/>
<xsd:enumeration value="FR"/>
<xsd:enumeration value="FLTLT"/>
<xsd:enumeration value="FSGT"/>
<xsd:enumeration value="FLGOFF"/>
<xsd:enumeration value="GEN"/>
<xsd:enumeration value="GOV"/>
<xsd:enumeration value="GP CAPT"/>
<xsd:enumeration value="HON"/>
<xsd:enumeration value="JUDGE"/>
<xsd:enumeration value="JUSTICE"/>
<xsd:enumeration value="LADY"/>
<xsd:enumeration value="LBDR"/>
<xsd:enumeration value="LCPL"/>
<xsd:enumeration value="LAC"/>
<xsd:enumeration value="LACW"/>
<xsd:enumeration value="LS"/>
<xsd:enumeration value="LT"/>
<xsd:enumeration value="LEUT"/>
<xsd:enumeration value="LTCOL"/>
<xsd:enumeration value="LCDR"/>
<xsd:enumeration value="LTGEN"/>
<xsd:enumeration value="LTGOV"/>
<xsd:enumeration value="LORD"/>
<xsd:enumeration value="MADAM"/>
<xsd:enumeration value="MADAME"/>
<xsd:enumeration value="MAJ"/>
<xsd:enumeration value="MAJGEN"/>
<xsd:enumeration value="MGR"/>
<xsd:enumeration value="MSTR"/>
<xsd:enumeration value="MAYOR"/>
<xsd:enumeration value="MAYORESS"/>
<xsd:enumeration value="MIDN"/>
<xsd:enumeration value="MISS"/>
<xsd:enumeration value="MR"/>
<xsd:enumeration value="MON"/>
<xsd:enumeration value="MOST REV"/>
<xsd:enumeration value="MTHR"/>
<xsd:enumeration value="MRS"/>
<xsd:enumeration value="MS"/>
<xsd:enumeration value="NURSE"/>
<xsd:enumeration value="OCDT"/>
<xsd:enumeration value="PASTOR"/>
<xsd:enumeration value="PO"/>
<xsd:enumeration value="PLTOFF"/>
<xsd:enumeration value="PTE"/>
<xsd:enumeration value="PROF"/>
<xsd:enumeration value="RABBI"/>
<xsd:enumeration value="RADM"/>
<xsd:enumeration value="RECTOR"/>
<xsd:enumeration value="RSM"/>
<xsd:enumeration value="RSM-A"/>
<xsd:enumeration value="REV"/>
<xsd:enumeration value="RTHON"/>
<xsd:enumeration value="RT REV"/>
<xsd:enumeration value="SMN"/>
<xsd:enumeration value="2LT"/>
<xsd:enumeration value="SEN"/>
<xsd:enumeration value="SNR"/>
<xsd:enumeration value="SGT"/>
<xsd:enumeration value="SIR"/>
<xsd:enumeration value="SR"/>
<xsd:enumeration value="SISTER SUP"/>
<xsd:enumeration value="SQNLDR"/>
<xsd:enumeration value="SCDT"/>
<xsd:enumeration value="SSGT"/>
<xsd:enumeration value="SM"/>
<xsd:enumeration value="SBLT"/>
<xsd:enumeration value="SUPT"/>
<xsd:enumeration value="SWAMI"/>
<xsd:enumeration value="VADM"/>
<xsd:enumeration value="VCE CMNDR"/>

```

```

        <xsd:enumeration value="VISCOUNT"/>
        <xsd:enumeration value="WOFF"/>
        <xsd:enumeration value="WO"/>
        <xsd:enumeration value="WO1"/>
        <xsd:enumeration value="WO2"/>
        <xsd:enumeration value="WOFF-AF"/>
        <xsd:enumeration value="WO-N"/>
        <xsd:enumeration value="WCDR"/>
    </xsd:restriction>
</xsd:simpleType>
<xsd:simpleType name="nameSuffix">
    <xsd:restriction base="xsd:string">
        <xsd:enumeration value="BM"/>
        <xsd:enumeration value="BEM"/>
        <xsd:enumeration value="COMDC"/>
        <xsd:enumeration value="CH"/>
        <xsd:enumeration value="AC"/>
        <xsd:enumeration value="CV"/>
        <xsd:enumeration value="DCMG"/>
        <xsd:enumeration value="DCB"/>
        <xsd:enumeration value="DBE"/>
        <xsd:enumeration value="DCVO"/>
        <xsd:enumeration value="AD"/>
        <xsd:enumeration value="DFM"/>
        <xsd:enumeration value="DSC"/>
        <xsd:enumeration value="DSM"/>
        <xsd:enumeration value="VIII"/>
        <xsd:enumeration value="ESQ"/>
        <xsd:enumeration value="V"/>
        <xsd:enumeration value="I"/>
        <xsd:enumeration value="IV"/>
        <xsd:enumeration value="GC"/>
        <xsd:enumeration value="JNR"/>
        <xsd:enumeration value="JP"/>
        <xsd:enumeration value="KB"/>
        <xsd:enumeration value="KCMG"/>
        <xsd:enumeration value="KCB"/>
        <xsd:enumeration value="KBE"/>
        <xsd:enumeration value="KCVO"/>
        <xsd:enumeration value="KG"/>
        <xsd:enumeration value="AK"/>
        <xsd:enumeration value="KT"/>
        <xsd:enumeration value="MD"/>
        <xsd:enumeration value="OAM"/>
        <xsd:enumeration value="MP"/>
        <xsd:enumeration value="MHA"/>
        <xsd:enumeration value="MHR"/>
        <xsd:enumeration value="MLA"/>
        <xsd:enumeration value="MLC"/>
        <xsd:enumeration value="AM"/>
        <xsd:enumeration value="MBE"/>
        <xsd:enumeration value="MC"/>
        <xsd:enumeration value="IX"/>
        <xsd:enumeration value="OC"/>
        <xsd:enumeration value="AO"/>
        <xsd:enumeration value="OBE"/>
        <xsd:enumeration value="OM"/>
        <xsd:enumeration value="QC"/>
        <xsd:enumeration value="II"/>
        <xsd:enumeration value="SNR"/>
        <xsd:enumeration value="VII"/>
        <xsd:enumeration value="VI"/>
        <xsd:enumeration value="SC"/>
        <xsd:enumeration value="X"/>
        <xsd:enumeration value="III"/>
        <xsd:enumeration value="VC"/>
    </xsd:restriction>
</xsd:simpleType>
<xsd:simpleType name="usage">
    <xsd:restriction base="xsd:string">
        <xsd:enumeration value="M"/>
        <xsd:enumeration value="N"/>
        <xsd:enumeration value="O"/>
        <xsd:enumeration value="B"/>
    </xsd:restriction>
</xsd:simpleType>

```

```

        <xsd:enumeration value="L"/>
        <xsd:enumeration value="R"/>
    </xsd:restriction>
</xsd:simpleType>
<xsd:simpleType name="preferred">
    <xsd:restriction base="xsd:string">
        <xsd:enumeration value="true"/>
        <xsd:enumeration value="false"/>
    </xsd:restriction>
</xsd:simpleType>
<xsd:simpleType name="conditionalUse">
    <xsd:restriction base="xsd:string">
        <xsd:enumeration value="1"/>
        <xsd:enumeration value="2"/>
        <xsd:enumeration value="3"/>
        <xsd:enumeration value="4"/>
    </xsd:restriction>
</xsd:simpleType>
<!--
===== STATUS TYPES =====
-->
<xsd:simpleType name="recordStatusTypeSupp">
    <xsd:restriction base="xsd:string">
        <xsd:enumeration value="Verified"/>
        <xsd:enumeration value="Unverified"/>
        <xsd:enumeration value="Provisional"/>
    </xsd:restriction>
</xsd:simpleType>
<!--
===== CONTACT DETAILS TYPES =====
-->
<xsd:complexType name="contactDetailsType">
    <xsd:sequence>
        <xsd:element name="mobilePhoneNumber" minOccurs="0">
            <xsd:simpleType>
                <xsd:restriction base="xsd:string">
                    <xsd:minLength value="1"/>
                    <xsd:maxLength value="50"/>
                </xsd:restriction>
            </xsd:simpleType>
        </xsd:element>
        <xsd:element name="emailAddress" minOccurs="0">
            <xsd:simpleType>
                <xsd:restriction base="xsd:string">
                    <xsd:minLength value="1"/>
                    <xsd:maxLength value="255"/>
                </xsd:restriction>
            </xsd:simpleType>
        </xsd:element>
    </xsd:sequence>
</xsd:complexType>
<!--
===== ORGANISATION TYPES =====
-->
<xsd:complexType name="organisationTypeSupp">
    <xsd:sequence>
        <xsd:element name="hpioNumber" type="hpioNumber"/>
        <xsd:element name="name" type="xsd:string"
maxOccurs="unbounded"/>
        <xsd:element name="organisationService"
type="organisationServiceType" maxOccurs="unbounded"/>
        <xsd:element name="participatingOrganisation"
minOccurs="0" maxOccurs="unbounded">
            <xsd:complexType>
                <xsd:sequence>
                    <xsd:element name="hpioNumber"
type="hpioNumber"/>
                    <xsd:element name="name"
type="xsd:string" maxOccurs="unbounded"/>
                    <xsd:element
name="organisationService" type="organisationServiceType"
maxOccurs="unbounded"/>
                </xsd:sequence>
            </xsd:complexType>
        </xsd:element>
    </xsd:sequence>
</xsd:complexType>

```

```

        </xsd:element>
      </xsd:sequence>
    </xsd:complexType>
  <!--
===== INDIVIDUAL TYPES =====
-->
  <xsd:complexType name="individualTypeSupp">
    <xsd:sequence>
      <xsd:element name="name" type="nameTypeSupp"/>
      <xsd:element ref="sex"/>
      <xsd:element name="dateOfBirth" type="xsd:date"/>
    </xsd:sequence>
  </xsd:complexType>
  <xsd:complexType name="contactPersonTypeSupp">
    <xsd:sequence>
      <xsd:element name="type">
        <xsd:simpleType>
          <xsd:restriction base="xsd:string">
            <xsd:enumeration value="Emergency"/>
            <xsd:enumeration value="Next of Kin"/>
            <xsd:enumeration value="Carer"/>
          </xsd:restriction>
        </xsd:simpleType>
      </xsd:element>
      <xsd:element name="name">
        <xsd:simpleType>
          <xsd:restriction base="xsd:string">
            <xsd:minLength value="1"/>
            <xsd:maxLength value="255"/>
            <xsd:whiteSpace value="collapse"/>
          </xsd:restriction>
        </xsd:simpleType>
      </xsd:element>
      <xsd:element name="phoneNumber" minOccurs="0">
        <xsd:simpleType>
          <xsd:restriction base="xsd:string">
            <xsd:minLength value="1"/>
            <xsd:maxLength value="50"/>
            <xsd:whiteSpace value="collapse"/>
          </xsd:restriction>
        </xsd:simpleType>
      </xsd:element>
      <xsd:element name="emailAddress" minOccurs="0">
        <xsd:simpleType>
          <xsd:restriction base="xsd:string">
            <xsd:minLength value="1"/>
            <xsd:maxLength value="255"/>
            <xsd:whiteSpace value="collapse"/>
          </xsd:restriction>
        </xsd:simpleType>
      </xsd:element>
      <xsd:element name="relationship" minOccurs="0">
        <xsd:simpleType>
          <xsd:restriction base="xsd:string">
            <xsd:minLength value="1"/>
            <xsd:maxLength value="255"/>
            <xsd:whiteSpace value="collapse"/>
          </xsd:restriction>
        </xsd:simpleType>
      </xsd:element>
    </xsd:sequence>
  </xsd:complexType>
</xsd:schema>

```



```

    </xs:complexType>
  </xs:element>
</xs:sequence>
</xs:complexType>
</xs:element>
</xs:sequence>
</xs:complexType>
</xs:element>
</xs:sequence>
</xs:complexType>
</xs:element>
</xs:schema>

```

A.1.8 XML Schema - PCEHR_GetIndividualDetailsView.xsd

```

<?xml version="1.0" encoding="UTF-8"?>
<!--Version 1.0 issued 24 April 2012-->
<xs:schema xmlns:xs="http://www.w3.org/2001/XMLSchema"
  xmlns:ns1="http://ns.electronichealth.net.au/pcehr/xsd/common/CommonCoreElements/1.0"
  xmlns:ns2="http://ns.electronichealth.net.au/pcehr/xsd/interfaces/GetIndividualDetailsView/1.0"
  targetNamespace="http://ns.electronichealth.net.au/pcehr/xsd/interfaces/GetIndividualDetailsView/1.0" elementFormDefault="qualified"
  attributeFormDefault="unqualified">
  <xs:import
    namespace="http://ns.electronichealth.net.au/pcehr/xsd/common/CommonCoreElements/1.0" schemaLocation="../Common/PCEHR_CommonTypes_Supplementary.xsd"/>
  <xs:element name="getIndividualDetailsView">
    <xs:element name="getIndividualDetailsViewResponse">
      <xs:complexType>
        <xs:sequence>
          <xs:element name="responseStatus"
            type="ns1:responseStatusType"/>
          <xs:element name="individual" minOccurs="0">
            <xs:complexType>
              <xs:complexContent>
                <xs:extension
                  base="ns1:individualTypeSupp">
                    <xs:sequence>
                      <xs:element
                        ref="ns1:dateAccuracyIndicatorType" minOccurs="0"/>
                      <xs:element
                        name="ihiRecordStatus" type="ns1:recordStatusType" minOccurs="0"/>
                      <xs:element
                        name="ihiStatus" type="ns1:statusType" minOccurs="0"/>
                      <xs:element
                        ref="ns1:ihiNumber"/>
                      <xs:element
                        name="contactDetails" type="ns1:contactDetailsType" minOccurs="0"/>
                      <xs:element
                        name="contactPersons" minOccurs="0">
                          <xs:complexType>
                            <xs:sequence>
                              <xs:element name="contactPerson" type="ns1:contactPersonTypeSupp"
                                maxOccurs="unbounded"/>
                            </xs:sequence>
                          </xs:complexType>
                        </xs:element>
                      </xs:sequence>
                    </xs:extension>
                  </xs:complexContent>
                </xs:complexType>
              </xs:element>
            </xs:schema>

```

```

        </xs:sequence>
    </xs:complexType>
</xs:element>
</xs:schema>

```

A.2 Web Service Interfaces

A.2.1 Interface Definition

The following WSDLs specification defines the PCEHR View Service SOAP interface.

A.2.1.1 B2B_GetConsolidatedViewInterface.wsdl

```

<?xml version="1.0" encoding="UTF-8"?>
<!--Version 1.1 issued 17 April 2012-->
<wsdl:definitions xmlns:wsdl="http://schemas.xmlsoap.org/wsdl/"
xmlns:xsd="http://www.w3.org/2001/XMLSchema"
xmlns:pcehr="http://ns.electronichealth.net.au/pcehr/svc/GetConsolidatedView/1.1"
xmlns:pcehr_b2b="http://ns.electronichealth.net.au/pcehr/xsd/common/CommonCoreElements/1.0"
xmlns:ns2="http://ns.electronichealth.net.au/pcehr/xsd/interfaces/GetConsolidatedView/1.0"
xmlns:tns="http://ns.electronichealth.net.au/wsp/xsd/StandardError/2010"
xmlns:wsam="http://www.w3.org/2007/05/addressing/metadata"
xmlns:ns="http://www.w3.org/2000/09/xmlsig#" name="GetConsolidatedView"
targetNamespace="http://ns.electronichealth.net.au/pcehr/svc/GetConsolidatedView/1.1">
    <wsdl:types>
        <xsd:schema
targetNamespace="http://ns.electronichealth.net.au/pcehr/svc/GetConsolidatedView/1.1" elementFormDefault="qualified">
            <xsd:import
namespace="http://ns.electronichealth.net.au/pcehr/xsd/common/CommonCoreElements/1.0" schemaLocation="../../../schema/Common/PCEHR_CommonTypes.xsd"/>
            <xsd:import
namespace="http://ns.electronichealth.net.au/pcehr/xsd/interfaces/GetConsolidatedView/1.0"
schemaLocation="../../../schema/External/PCEHR_GetConsolidatedView.xsd"/>
            <xsd:import
namespace="http://ns.electronichealth.net.au/wsp/xsd/StandardError/2010"
schemaLocation="../../../schema/Common/wsp-StandardError-2010.xsd"/>
        </xsd:schema>
    </wsdl:types>
    <wsdl:message name="getConsolidatedViewInMsg">
        <wsdl:part name="timestampHeader" element="pcehr_b2b:timestamp"/>
        <wsdl:part name="signatureHeader" element="pcehr_b2b:signature"/>
        <wsdl:part name="PCEHRHeader" element="pcehr_b2b:PCEHRHeader"/>
        <wsdl:part name="parameters" element="ns2:getConsolidatedView"/>
    </wsdl:message>
    <wsdl:message name="getConsolidatedViewOutMsg">
        <wsdl:part name="signatureHeader" element="pcehr_b2b:signature"/>
        <wsdl:part name="parameters" element="ns2:getConsolidatedViewResponse"/>
    </wsdl:message>
    <wsdl:message name="standardErrorMsg">
        <wsdl:part name="parameters" element="tns:standardError"/>
    </wsdl:message>
    <wsdl:portType name="GetConsolidatedViewPortType">
        <wsdl:operation name="getConsolidatedView" parameterOrder="parameters">
            <wsdl:input message="pcehr:getConsolidatedViewInMsg"
wsam:Action="http://ns.electronichealth.net.au/pcehr/svc/GetConsolidatedView/1.1/GetConsolidatedViewPortType/getConsolidatedViewRequest"/>
            <wsdl:output message="pcehr:getConsolidatedViewOutMsg"
wsam:Action="http://ns.electronichealth.net.au/pcehr/svc/GetConsolidatedView/1.1/GetConsolidatedViewPortType/getConsolidatedViewResponse"/>
            <wsdl:fault name="standardError" message="pcehr:standardErrorMsg"
wsam:Action="http://ns.electronichealth.net.au/pcehr/svc/GetConsolidatedView/1.1/GetConsolidatedViewPortType/Fault/standardError"/>
        </wsdl:operation>
    </wsdl:portType>

```

```
</wsdl:definitions>
```

A.2.1.2 B2B_GetChangeHistoryViewInterface.wsdl

```
<?xml version="1.0" encoding="UTF-8"?>
<!--Version 1.1 issued 17 April 2012-->
<definitions
xmlns:pcehr="http://ns.electronichealth.net.au/pcehr/svc/getChangeHistoryView/
1.1" xmlns:xsd="http://www.w3.org/2001/XMLSchema"
xmlns="http://schemas.xmlsoap.org/wsdl/"
xmlns:pcehr_b2b="http://ns.electronichealth.net.au/pcehr/xsd/common/CommonCore
Elements/1.0"
xmlns:ns7="http://ns.electronichealth.net.au/pcehr/xsd/interfaces/GetChangeHis
toryView/1.0"
xmlns:ns8="http://ns.electronichealth.net.au/wsp/xsd/StandardError/2010"
xmlns:wsam="http://www.w3.org/2007/05/addressing/metadata"
xmlns:ns="http://www.w3.org/2000/09/xmldsig#"
xmlns:ns1="urn:oasis:names:tc:ebxml-regrep:xsd:rim:3.0"
xmlns:ns2="urn:oasis:names:tc:ebxml-regrep:xsd:rs:3.0"
name="getChangeHistoryView"
targetNamespace="http://ns.electronichealth.net.au/pcehr/svc/getChangeHistoryV
iew/1.1">
  <types>
    <xsd:schema
targetNamespace="http://ns.electronichealth.net.au/pcehr/svc/getChangeHistoryV
iew/1.1" elementFormDefault="qualified">
      <xsd:import
namespace="http://ns.electronichealth.net.au/pcehr/xsd/common/CommonCoreElemen
ts/1.0" schemaLocation="../../../schema/Common/PCEHR_CommonTypes.xsd"/>
      <xsd:import
namespace="http://ns.electronichealth.net.au/pcehr/xsd/interfaces/GetChangeHis
toryView/1.0"
schemaLocation="../../../schema/External/PCEHR_GetChangeHistoryView.xsd"/>
      <xsd:import
namespace="http://ns.electronichealth.net.au/wsp/xsd/StandardError/2010"
schemaLocation="../../../schema/Common/wsp-StandardError-2010.xsd"/>
    </xsd:schema>
  </types>
  <message name="getChangeHistoryViewInMsg">
    <part name="timestampHeader" element="pcehr_b2b:timestamp"/>
    <part name="signatureHeader" element="pcehr_b2b:signature"/>
    <part name="PCEHRHeader" element="pcehr_b2b:PCEHRHeader"/>
    <part name="parameters" element="ns7:getChangeHistoryView"/>
  </message>
  <message name="getChangeHistoryViewOutMsg">
    <part name="signatureHeader" element="pcehr_b2b:signature"/>
    <part name="parameters" element="ns7:getChangeHistoryViewResponse"/>
  </message>
  <message name="standardErrorMsg">
    <part name="parameters" element="ns8:standardError"/>
  </message>
  <portType name="GetChangeHistoryViewPortType">
    <operation name="getChangeHistoryView" parameterOrder="parameters">
      <input message="pcehr:getChangeHistoryViewInMsg"
wsam:Action="http://ns.electronichealth.net.au/pcehr/svc/GetChangeHistoryView/
1.1/GetChangeHistoryViewPortType/getChangeHistoryViewRequest"/>
      <output message="pcehr:getChangeHistoryViewOutMsg"
wsam:Action="http://ns.electronichealth.net.au/pcehr/svc/GetChangeHistoryView/
1.1/GetChangeHistoryViewPortType/getChangeHistoryViewResponse"/>
      <fault name="standardError" message="pcehr:standardErrorMsg"
wsam:Action="http://ns.electronichealth.net.au/pcehr/svc/GetChangeHistoryView/
1.1/GetChangeHistoryViewPortType/Fault/standardError"/>
    </operation>
  </portType>
</definitions>
```

A.2.1.3 B2B_GetAuditViewInterface.wsdl

```
<?xml version="1.0" encoding="UTF-8"?>
<!--Version 1.1 issued 17 April 2012-->
<wsdl:definitions xmlns:wsdl="http://schemas.xmlsoap.org/wsdl/"
xmlns:xsd="http://www.w3.org/2001/XMLSchema"
```

```

xmlns:pcehr="http://ns.electronichealth.net.au/pcehr/svc/GetAuditView/1.1"
xmlns:ns2="http://ns.electronichealth.net.au/pcehr/xsd/interfaces/GetAuditView
/1.1" xmlns:tns="http://ns.electronichealth.net.au/wsp/xsd/StandardError/2010"
xmlns:wsam="http://www.w3.org/2007/05/addressing/metadata"
xmlns:pcehr_b2b="http://ns.electronichealth.net.au/pcehr/xsd/common/CommonCore
Elements/1.0" xmlns:ns="http://www.w3.org/2000/09/xmldsig#"
name="getAuditView"
targetNamespace="http://ns.electronichealth.net.au/pcehr/svc/GetAuditView/1.1"
>
  <wsdl:types>
    <xsd:schema
targetNamespace="http://ns.electronichealth.net.au/pcehr/svc/GetAuditView/1.1"
elementFormDefault="qualified">
      <xsd:import
namespace="http://ns.electronichealth.net.au/pcehr/xsd/common/CommonCoreElemen
ts/1.0" schemaLocation="../../../schema/Common/PCEHR_CommonTypes.xsd"/>
      <xsd:import
namespace="http://ns.electronichealth.net.au/pcehr/xsd/interfaces/GetAuditView
/1.1" schemaLocation="../../../schema/External/PCEHR_GetAuditView.xsd"/>
      <xsd:import
namespace="http://ns.electronichealth.net.au/wsp/xsd/StandardError/2010"
schemaLocation="../../../schema/Common/wsp-StandardError-2010.xsd"/>
    </xsd:schema>
  </wsdl:types>
  <wsdl:message name="getAuditViewInMsg">
    <wsdl:part name="timestampHeader" element="pcehr_b2b:timestamp"/>
    <wsdl:part name="signatureHeader" element="pcehr_b2b:signature"/>
    <wsdl:part name="PCEHRHeader" element="pcehr_b2b:PCEHRHeader"/>
    <wsdl:part name="parameters" element="ns2:getAuditView"/>
  </wsdl:message>
  <wsdl:message name="getAuditViewOutMsg">
    <wsdl:part name="signatureHeader" element="pcehr_b2b:signature"/>
    <wsdl:part name="parameters" element="ns2:getAuditViewResponse"/>
  </wsdl:message>
  <wsdl:message name="standardErrorMsg">
    <wsdl:part name="parameters" element="tns:standardError"/>
  </wsdl:message>
  <wsdl:portType name="GetAuditViewPortType">
    <wsdl:operation name="getAuditView" parameterOrder="parameters">
      <wsdl:input message="pcehr:getAuditViewInMsg"
wsam:Action="http://ns.electronichealth.net.au/pcehr/svc/GetAuditView/1.1/GetA
uditViewPortType/getAuditViewRequest"/>
      <wsdl:output message="pcehr:getAuditViewOutMsg"
wsam:Action="http://ns.electronichealth.net.au/pcehr/svc/GetAuditView/1.1/GetA
uditViewPortType/getAuditViewResponse"/>
      <wsdl:fault name="standardError" message="pcehr:standardErrorMsg"
wsam:Action="http://ns.electronichealth.net.au/pcehr/svc/GetAuditView/1.1/GetA
uditViewPortType/Fault/standardError"/>
    </wsdl:operation>
  </wsdl:portType>
</wsdl:definitions>

```

A.2.1.4 B2B_GetRepresentativeListInterface.wsdl

```

<?xml version="1.0" encoding="UTF-8"?>
<!--Version 1.1 issued 24 April 2012-->
<wsdl:definitions xmlns:wsdl="http://schemas.xmlsoap.org/wsdl/"
xmlns:xsd="http://www.w3.org/2001/XMLSchema"
xmlns:pcehr="http://ns.electronichealth.net.au/pcehr/svc/GetRepresentativeList
/1.1"
xmlns:ns2="http://ns.electronichealth.net.au/pcehr/xsd/interfaces/GetRepresent
ativeList/1.1"
xmlns:tns="http://ns.electronichealth.net.au/wsp/xsd/StandardError/2010"
xmlns:wsam="http://www.w3.org/2007/05/addressing/metadata"
xmlns:pcehr_b2b="http://ns.electronichealth.net.au/pcehr/xsd/common/CommonCore
Elements/1.0" xmlns:ns="http://www.w3.org/2000/09/xmldsig#"
name="getRepresentativeList"
targetNamespace="http://ns.electronichealth.net.au/pcehr/svc/GetRepresentative
List/1.1">
  <wsdl:types>

```

```

        <xsd:schema
targetNamespace="http://ns.electronichealth.net.au/pcehr/svc/GetRepresentative
List/1.1" elementFormDefault="qualified">
        <xsd:import
namespace="http://ns.electronichealth.net.au/pcehr/xsd/common/CommonCoreElemen
ts/1.0" schemaLocation="../../../schema/Common/PCEHR_CommonTypes.xsd"/>
        <xsd:import
namespace="http://ns.electronichealth.net.au/pcehr/xsd/interfaces/GetRepresent
ativeList/1.1"
schemaLocation="../../../schema/External/PCEHR_GetRepresentativeList.xsd"/>
        <xsd:import
namespace="http://ns.electronichealth.net.au/wsp/xsd/StandardError/2010"
schemaLocation="../../../schema/Common/wsp-StandardError-2010.xsd"/>
        </xsd:schema>
    </wsdl:types>
    <wsdl:message name="getRepresentativeListInMsg">
        <wsdl:part name="timestampHeader" element="pcehr_b2b:timestamp"/>
        <wsdl:part name="signatureHeader" element="pcehr_b2b:signature"/>
        <wsdl:part name="PCEHRHeader" element="pcehr_b2b:PCEHRHeader"/>
        <wsdl:part name="parameters"
element="ns2:getRepresentativeList"/>
    </wsdl:message>
    <wsdl:message name="getRepresentativeListOutMsg">
        <wsdl:part name="signatureHeader" element="pcehr_b2b:signature"/>
        <wsdl:part name="parameters"
element="ns2:getRepresentativeListResponse"/>
    </wsdl:message>
    <wsdl:message name="standardErrorMsg">
        <wsdl:part name="parameters" element="tns:standardError"/>
    </wsdl:message>
    <wsdl:portType name="GetRepresentativeListPortType">
        <wsdl:operation name="getRepresentativeList"
parameterOrder="parameters">
            <wsdl:input message="pcehr:getRepresentativeListInMsg"
wsam:Action="http://ns.electronichealth.net.au/pcehr/svc/GetRepresentativeList
/1.1/GetRepresentativeListPortType/getRepresentativeListRequest"/>
            <wsdl:output message="pcehr:getRepresentativeListOutMsg"
wsam:Action="http://ns.electronichealth.net.au/pcehr/svc/GetRepresentativeList
/1.1/GetRepresentativeListPortType/getRepresentativeListResponse"/>
            <wsdl:fault name="standardError"
message="pcehr:standardErrorMsg"
wsam:Action="http://ns.electronichealth.net.au/pcehr/svc/GetRepresentativeList
/1.1/GetRepresentativeListPortType/Fault/standardError"/>
        </wsdl:operation>
    </wsdl:portType>
</wsdl:definitions>

```

A.2.1.5 B2B_GetIndividualDetailsViewInterface.wsdl

```

<?xml version="1.0" encoding="UTF-8"?>
<!--Version 1.0 issued 24 April 2012-->
<wsdl:definitions xmlns:wsdl="http://schemas.xmlsoap.org/wsdl/"
xmlns:xsd="http://www.w3.org/2001/XMLSchema"
xmlns:pcehr="http://ns.electronichealth.net.au/pcehr/svc/GetIndividualDetailsV
iew/1.0"
xmlns:ns2="http://ns.electronichealth.net.au/pcehr/xsd/interfaces/GetIndividual
DetailsView/1.0"
xmlns:tns="http://ns.electronichealth.net.au/wsp/xsd/StandardError/2010"
xmlns:wsam="http://www.w3.org/2007/05/addressing/metadata"
xmlns:pcehr_b2b="http://ns.electronichealth.net.au/pcehr/xsd/common/CommonCore
Elements/1.0" xmlns:ns1="http://www.w3.org/2000/09/xmldsig#"
name="getIndividualDetailsView"
targetNamespace="http://ns.electronichealth.net.au/pcehr/svc/GetIndividualDeta
ilsView/1.0">
    <wsdl:types>
        <xsd:schema
targetNamespace="http://ns.electronichealth.net.au/pcehr/svc/GetIndividualDeta
ilsView/1.0" elementFormDefault="qualified">
            <xsd:import
namespace="http://ns.electronichealth.net.au/pcehr/xsd/common/CommonCoreElemen

```

```

ts/1.0"
schemaLocation="../../../schema/Common/PCEHR_CommonTypes_Supplementary.xsd"/>
  <xsd:import
namespace="http://ns.electronichealth.net.au/pcehr/xsd/interfaces/GetIndividual
1DetailsView/1.0"
schemaLocation="../../../schema/External/PCEHR_GetIndividualDetailsView.xsd"/>
  <xsd:import
namespace="http://ns.electronichealth.net.au/wsp/xsd/StandardError/2010"
schemaLocation="../../../schema/Common/wsp-StandardError-2010.xsd"/>
  </xsd:schema>
</wsdl:types>
<wsdl:message name="getIndividualDetailsViewInMsg">
  <wsdl:part name="timestampHeader" element="pcehr_b2b:timestamp"/>
  <wsdl:part name="signatureHeader" element="pcehr_b2b:signature"/>
  <wsdl:part name="PCEHRHeader" element="pcehr_b2b:PCEHRHeader"/>
  <wsdl:part name="parameters"
element="ns2:getIndividualDetailsView"/>
</wsdl:message>
<wsdl:message name="getIndividualDetailsViewOutMsg">
  <wsdl:part name="signatureHeader" element="pcehr_b2b:signature"/>
  <wsdl:part name="parameters"
element="ns2:getIndividualDetailsViewResponse"/>
</wsdl:message>
<wsdl:message name="standardErrorMsg">
  <wsdl:part name="parameters" element="tns:standardError"/>
</wsdl:message>
<wsdl:portType name="GetIndividualDetailsViewPortType">
  <wsdl:operation name="getIndividualDetailsView"
parameterOrder="parameters">
  <wsdl:input message="pcehr:getIndividualDetailsViewInMsg"
wsam:Action="http://ns.electronichealth.net.au/pcehr/svc/GetIndividualDetailsV
iew/1.0/GetIndividualDetailsViewPortType/getIndividualDetailsViewRequest"/>
  <wsdl:output
message="pcehr:getIndividualDetailsViewOutMsg"
wsam:Action="http://ns.electronichealth.net.au/pcehr/svc/GetIndividualDetailsV
iew/1.0/GetIndividualDetailsViewPortType/getIndividualDetailsViewResponse"/>
  <wsdl:fault name="standardError"
message="pcehr:standardErrorMsg"
wsam:Action="http://ns.electronichealth.net.au/pcehr/svc/GetIndividualDetailsV
iew/1.0/GetIndividualDetailsViewPortType/Fault/standardError"/>
  </wsdl:operation>
</wsdl:portType>
</wsdl:definitions>

```

A.2.2 TLS Binding

The following WSDLs defines the binding based on the TLS Security Profile defined in ATS 5820—2010.

A.2.2.1 B2B_GetConsolidatedView.wsdl

```

<?xml version="1.0" encoding="UTF-8"?>
<!--Version 1.1 issued 17 April 2012-->
<wsdl:definitions xmlns:wsdl="http://schemas.xmlsoap.org/wsdl/"
xmlns:soap12="http://schemas.xmlsoap.org/wsdl/soap12/"
xmlns:wsp="http://www.w3.org/ns/ws-policy"
xmlns:wsam="http://www.w3.org/2007/05/addressing/metadata"
xmlns:sp="http://docs.oasis-open.org/ws-sx/ws-securitypolicy/200702"
xmlns:pcehr="http://ns.electronichealth.net.au/pcehr/svc/GetConsolidatedView/1
.1" name="getConsolidatedView"
targetNamespace="http://ns.electronichealth.net.au/pcehr/svc/GetConsolidatedVi
ew/1.1">
  <wsdl:import
namespace="http://ns.electronichealth.net.au/pcehr/svc/GetConsolidatedView/1.1"
location="B2B_GetConsolidatedViewInterface.wsdl"/>
  <wsdl:binding name="getConsolidatedViewServiceSOAP12Binding"
type="pcehr:GetConsolidatedViewPortType">
  <soap12:binding style="document"
transport="http://schemas.xmlsoap.org/soap/http"/>
  <wsp:PolicyReference URI="#AddressingPolicy"/>
  <wsp:PolicyReference URI="#TlsPolicy"/>

```

```

        <wsdl:operation name="getConsolidatedView">
            <soap12:operation soapActionRequired="false" style="document"/>
            <wsdl:input>
                <soap12:header message="pcehr:getConsolidatedViewInMsg"
part="timestampHeader" use="literal"/>
                <soap12:header message="pcehr:getConsolidatedViewInMsg"
part="signatureHeader" use="literal"/>
                <soap12:header message="pcehr:getConsolidatedViewInMsg"
part="PCEHRHeader" use="literal"/>
                <soap12:body parts="parameters" use="literal"/>
            </wsdl:input>
            <wsdl:output>
                <soap12:header message="pcehr:getConsolidatedViewOutMsg"
part="signatureHeader" use="literal"/>
                <soap12:body parts="parameters" use="literal"/>
            </wsdl:output>
            <wsdl:fault name="standardError">
                <soap12:fault name="standardError" use="literal"/>
            </wsdl:fault>
        </wsdl:operation>
    </wsdl:binding>
    <wsdl:service name="getConsolidatedViewService">
        <wsdl:port name="getConsolidatedViewSOAP12Port"
binding="pcehr:getConsolidatedViewServiceSOAP12Binding">
            <soap12:address location="http://localhost:8011"/>
        </wsdl:port>
    </wsdl:service>
    <wsp:Policy xml:id="AddressingPolicy">
        <wsam:Addressing/>
    </wsp:Policy>
    <wsp:Policy xml:id="TlsPolicy">
        <sp:TransportBinding>
            <wsp:Policy>
                <sp:TransportToken>
                    <wsp:Policy>
                        <sp:HttpsToken>
                            <wsp:Policy>
                                <sp:RequireClientCertificate/>
                            </wsp:Policy>
                        </sp:HttpsToken>
                    </wsp:Policy>
                </sp:TransportToken>
            </wsp:Policy>
        </sp:TransportBinding>
    </wsp:Policy>
</wsdl:definitions>

```

A.2.2.2 B2B_GetChangeHistoryView.wsdl

```

<?xml version="1.0" encoding="UTF-8"?>
<!--Version 1.1 issued 17 April 2012-->
<definitions xmlns:soap12="http://schemas.xmlsoap.org/wsdl/soap12/"
xmlns:pcehr="http://ns.electronichealth.net.au/pcehr/svc/getChangeHistoryView/
1.1" xmlns="http://schemas.xmlsoap.org/wsdl/"
xmlns:wsam="http://www.w3.org/2007/05/addressing/metadata"
xmlns:wsp="http://www.w3.org/ns/ws-policy" xmlns:sp="http://docs.oasis-
open.org/ws-sx/ws-securitypolicy/200702" name="getChangeHistoryView"
targetNamespace="http://ns.electronichealth.net.au/pcehr/svc/getChangeHistoryV
iew/1.1">
    <import
namespace="http://ns.electronichealth.net.au/pcehr/svc/getChangeHistoryView/1.
1" location="B2B_GetChangeHistoryViewInterface.wsdl"/>
    <binding name="getChangeHistoryViewServiceSOAP12Binding"
type="pcehr:GetChangeHistoryViewPortType">
        <soap12:binding style="document"
transport="http://schemas.xmlsoap.org/soap/http"/>
        <wsp:PolicyReference URI="#AddressingPolicy"/>
        <wsp:PolicyReference URI="#TlsPolicy"/>
        <operation name="getChangeHistoryView">
            <soap12:operation soapActionRequired="false" style="document"/>
            <input>
                <soap12:header message="pcehr:getChangeHistoryViewInMsg"

```



```

part="timestampHeader" use="literal"/>
    <soap12:header message="pcehr:getChangeHistoryViewInMsg"
part="signatureHeader" use="literal"/>
    <soap12:header message="pcehr:getChangeHistoryViewInMsg"
part="PCEHRHeader" use="literal"/>
    <soap12:body parts="parameters" use="literal"/>
</input>
<output>
    <soap12:header message="pcehr:getChangeHistoryViewOutMsg"
part="signatureHeader" use="literal"/>
    <soap12:body parts="parameters" use="literal"/>
</output>
<fault name="standardError">
    <soap12:fault name="standardError" use="literal"/>
</fault>
</operation>
</binding>
<service name="getChangeHistoryViewService">
    <port name="getChangeHistoryViewSOAP12Port"
binding="pcehr:getChangeHistoryViewServiceSOAP12Binding">
    <soap12:address location="http://localhost:8011/">
</port>
</service>
<wsp:Policy xml:id="AddressingPolicy">
    <wsam:Addressing/>
</wsp:Policy>
<wsp:Policy xml:id="TlsPolicy">
    <sp:TransportBinding>
        <wsp:Policy>
            <sp:TransportToken>
                <wsp:Policy>
                    <sp:HttpsToken>
                        <wsp:Policy>
                            <sp:RequireClientCertificate/>
                        </wsp:Policy>
                    </sp:HttpsToken>
                </wsp:Policy>
            </sp:TransportToken>
        </wsp:Policy>
    </sp:TransportBinding>
</wsp:Policy>
</definitions>

```

A.2.2.3 B2B_GetAuditView.wsdl

```

<?xml version="1.0" encoding="UTF-8"?>
<!--Version 1.1 issued 17 April 2012-->
<wsdl:definitions xmlns:wsdl="http://schemas.xmlsoap.org/wsdl/"
xmlns:soap12="http://schemas.xmlsoap.org/wsdl/soap12/"
xmlns:wsp="http://www.w3.org/ns/ws-policy"
xmlns:wsam="http://www.w3.org/2007/05/addressing/metadata"
xmlns:sp="http://docs.oasis-open.org/ws-sx/ws-securitypolicy/200702"
xmlns:pcehr="http://ns.electronichealth.net.au/pcehr/svc/GetAuditView/1.1"
name="getAuditView"
targetNamespace="http://ns.electronichealth.net.au/pcehr/svc/GetAuditView/1.1"
>
    <wsdl:import
namespace="http://ns.electronichealth.net.au/pcehr/svc/GetAuditView/1.1"
location="B2B_GetAuditViewInterface.wsdl"/>
    <wsdl:binding name="getAuditViewServiceSOAP12Binding"
type="pcehr:GetAuditViewPortType">
        <soap12:binding style="document"
transport="http://schemas.xmlsoap.org/soap/http"/>
        <wsp:PolicyReference URI="#AddressingPolicy"/>
        <wsp:PolicyReference URI="#TlsPolicy"/>
        <wsdl:operation name="getAuditView">
            <soap12:operation soapActionRequired="false" style="document"/>
            <wsdl:input>
                <soap12:header message="pcehr:getAuditViewInMsg"
part="timestampHeader" use="literal"/>

```

```

        <soap12:header message="pcehr:getAuditViewInMsg"
part="signatureHeader" use="literal"/>
        <soap12:header message="pcehr:getAuditViewInMsg"
part="PCEHRHeader" use="literal"/>
        <soap12:body parts="parameters" use="literal"/>
    </wsdl:input>
    <wsdl:output>
        <soap12:header message="pcehr:getAuditViewOutMsg"
part="signatureHeader" use="literal"/>
        <soap12:body parts="parameters" use="literal"/>
    </wsdl:output>
    <wsdl:fault name="standardError">
        <soap12:fault name="standardError" use="literal"/>
    </wsdl:fault>
</wsdl:operation>
</wsdl:binding>
<wsdl:service name="getAuditViewService">
    <wsdl:port name="getAuditViewSOAP12Port"
binding="pcehr:getAuditViewServiceSOAP12Binding">
        <soap12:address location="http://localhost:8011/">
    </wsdl:port>
</wsdl:service>
<wsp:Policy xml:id="AddressingPolicy">
    <wsam:Addressing/>
</wsp:Policy>
<wsp:Policy xml:id="TlsPolicy">
    <sp:TransportBinding>
        <wsp:Policy>
            <sp:TransportToken>
                <wsp:Policy>
                    <sp:HttpsToken>
                        <wsp:Policy>
                            <sp:RequireClientCertificate/>
                        </wsp:Policy>
                    </sp:HttpsToken>
                </wsp:Policy>
            </sp:TransportToken>
        </wsp:Policy>
    </sp:TransportBinding>
</wsp:Policy>
</wsdl:definitions>

```

A.2.2.4 B2B_GetRepresentativeList.wsdl

```

<?xml version="1.0" encoding="UTF-8"?>
<!--Version 1.1 issued 24 April 2012-->
<wsdl:definitions xmlns:wsdl="http://schemas.xmlsoap.org/wsdl/"
xmlns:soap12="http://schemas.xmlsoap.org/wsdl/soap12/"
xmlns:wsp="http://www.w3.org/ns/ws-policy"
xmlns:wsam="http://www.w3.org/2007/05/addressing/metadata"
xmlns:sp="http://docs.oasis-open.org/ws-sx/ws-securitypolicy/200702"
xmlns:pcehr="http://ns.electronichealth.net.au/pcehr/svc/GetRepresentativeList
/1.1" name="getRepresentativeList"
targetNamespace="http://ns.electronichealth.net.au/pcehr/svc/GetRepresentative
List/1.1">
  <wsdl:import
namespace="http://ns.electronichealth.net.au/pcehr/svc/GetRepresentativeList/1
.1" location="B2B_GetRepresentativeListInterface.wsdl"/>
  <wsdl:binding name="getRepresentativeListServiceSOAP12Binding"
type="pcehr:GetRepresentativeListPortType">
    <soap12:binding style="document"
transport="http://schemas.xmlsoap.org/soap/http"/>
    <wsp:PolicyReference URI="#AddressingPolicy"/>
    <wsp:PolicyReference URI="#TlsPolicy"/>
    <wsdl:operation name="getRepresentativeList">
      <soap12:operation soapActionRequired="false"
style="document"/>
      <wsdl:input>
        <soap12:header
message="pcehr:getRepresentativeListInMsg" part="timestampHeader"
use="literal"/>
        <soap12:header
message="pcehr:getRepresentativeListInMsg" part="signatureHeader"
use="literal"/>
        <soap12:header
message="pcehr:getRepresentativeListInMsg" part="PCEHRHeader" use="literal"/>
        <soap12:body parts="parameters" use="literal"/>
      </wsdl:input>
      <wsdl:output>
        <soap12:header
message="pcehr:getRepresentativeListOutMsg" part="signatureHeader"
use="literal"/>
        <soap12:body parts="parameters" use="literal"/>
      </wsdl:output>
      <wsdl:fault name="standardError">
        <soap12:fault name="standardError" use="literal"/>
      </wsdl:fault>
    </wsdl:operation>
  </wsdl:binding>
  <wsdl:service name="getRepresentativeListService">
    <wsdl:port name="getRepresentativeListSOAP12Port"
binding="pcehr:getRepresentativeListServiceSOAP12Binding">
      <soap12:address location="http://localhost:8011"/>
    </wsdl:port>
  </wsdl:service>
  <wsp:Policy xml:id="AddressingPolicy">
    <wsam:Addressing/>
  </wsp:Policy>
  <wsp:Policy xml:id="TlsPolicy">
    <sp:TransportBinding>
      <wsp:Policy>
        <sp:TransportToken>
          <wsp:Policy>
            <sp:HttpsToken>
              <wsp:Policy>
                <sp:RequireClientCertificate/>
              </wsp:Policy>
            </sp:HttpsToken>
          </wsp:Policy>
        </sp:TransportToken>
      </wsp:Policy>
    </sp:TransportBinding>
  </wsp:Policy>
</wsdl:definitions>

```

A.2.2.5 B2B_GetIndividualDetailsView.wsdl

```

<?xml version="1.0" encoding="UTF-8"?>
<!--Version 1.0 issued 24 April 2012-->
<wsdl:definitions xmlns:wsdl="http://schemas.xmlsoap.org/wsdl/"
xmlns:soap12="http://schemas.xmlsoap.org/wsdl/soap12/"
xmlns:wsp="http://www.w3.org/ns/ws-policy"
xmlns:wsam="http://www.w3.org/2007/05/addressing/metadata"
xmlns:sp="http://docs.oasis-open.org/ws-sx/ws-securitypolicy/200702"
xmlns:pcehr="http://ns.electronichealth.net.au/pcehr/svc/GetIndividualDetailsV
iew/1.0" name="getIndividualDetailsView"
targetNamespace="http://ns.electronichealth.net.au/pcehr/svc/GetIndividualDeta
ilsView/1.0">
  <wsdl:import
namespace="http://ns.electronichealth.net.au/pcehr/svc/GetIndividualDetailsVie
w/1.0" location="B2B_GetIndividualDetailsViewInterface.wsdl"/>
  <wsdl:binding name="getIndividualDetailsViewServiceSOAP12Binding"
type="pcehr:GetIndividualDetailsViewPortType">
    <soap12:binding style="document"
transport="http://schemas.xmlsoap.org/soap/http"/>
    <wsp:PolicyReference URI="#AddressingPolicy"/>
    <wsp:PolicyReference URI="#TlsPolicy"/>
    <wsdl:operation name="getIndividualDetailsView">
      <soap12:operation soapActionRequired="false"
style="document"/>
      <wsdl:input>
        <soap12:header
message="pcehr:getIndividualDetailsViewInMsg" part="timestampHeader"
use="literal"/>
        <soap12:header
message="pcehr:getIndividualDetailsViewInMsg" part="signatureHeader"
use="literal"/>
        <soap12:header
message="pcehr:getIndividualDetailsViewInMsg" part="PCEHRHeader"
use="literal"/>
        <soap12:body parts="parameters" use="literal"/>
      </wsdl:input>
      <wsdl:output>
        <soap12:header
message="pcehr:getIndividualDetailsViewOutMsg" part="signatureHeader"
use="literal"/>
        <soap12:body parts="parameters" use="literal"/>
      </wsdl:output>
      <wsdl:fault name="standardError">
        <soap12:fault name="standardError" use="literal"/>
      </wsdl:fault>
    </wsdl:operation>
  </wsdl:binding>
  <wsdl:service name="getIndividualDetailsViewService">
    <wsdl:port name="getIndividualDetailsViewSOAP12Port"
binding="pcehr:getIndividualDetailsViewServiceSOAP12Binding">
      <soap12:address location="http://localhost:8011"/>
    </wsdl:port>
  </wsdl:service>
  <wsp:Policy xml:id="AddressingPolicy">
    <wsam:Addressing/>
  </wsp:Policy>
  <wsp:Policy xml:id="TlsPolicy">
    <sp:TransportBinding>
      <wsp:Policy>
        <sp:TransportToken>
          <wsp:Policy>
            <sp:HttpsToken>
              <wsp:Policy>
                <sp:RequireClientCertificate/>
              </wsp:Policy>
            </sp:HttpsToken>
          </wsp:Policy>
        </sp:TransportToken>
      </wsp:Policy>
    </sp:TransportBinding>
  </wsp:Policy>
</wsdl:definitions>

```

Appendix B Acronyms and Terminology

The core set of terms used within the PCEHR are specified in the PCEHR System Glossary [[PCEHR-SYSTEM-GLOSSARY](#)].

B.1 Acronyms

Acronym	Explanation
PCEHR	Personally Controlled Electronic Health Record
WSDL	Web Service Definition Language
WSP	Web Service Profile – Commonly used to refer to the ATS-5820 Web Service Profile.
XDS	Cross-Enterprise Document Sharing (XDS.b) IHE Integration Profile as specified in [ITITF-1], Chapter 10 and extended by material relevant to XDS.b in [ITITF-2A], [ITITF-2B], [ITITF-2x], [ITITF-3].
XSD	XML Schema Definition

B.2 Specialised Terminology

Term	Explanation
NASH certificate	A NASH certificate is a digital certificate that is compliant with the NASH certificate policies.
Service	A Service encapsulates the collaboration which occurs between two or more parties to achieve a goal. Each participant in the service may offer multiple Service Interfaces.
Service Interface	A Service Interface is a logical grouping of operations which be offered by a participant within the context of a Service.
Service Operation	A Service Operation is a specific function which supports communication between two participants.

Appendix C References

Tag	Name	Version Release Date
[ATS 5820-2010]	ATS 5820-2010 Australian Technical Specification E-health Web Services Profile	
[ATS 5821-2010]	ATS 5821-2010 Australian Technical Specification E-health XML Secured Payload Profile	5/3/2010
[PCEHR-CON-OPS]	PCEHR Concept of Operations	Version Number 1.0.5 released September 2011
[PCEHR-DE-LSS]	PCEHR Document Exchange Logical Service Specification	Version 1.1 — 18 January 2012
[PCEHR-DE-TSS]	PCEHR Document Exchange using the IHE XDS.b Platform Technical Service Specification	Version 1.2 26 April 2012
[PCEHR-SYSTEM- GLOSSARY]	PCEHR System - Glossary	1.0 6/05/2011
[PCEHR-VS-LSS]	PCEHR View Service - Logical Service Specification	Version 1.1 — 3 February 2012
[RFC2119]	IETF, <i>RFC 2119: Keywords for use in RFCs to Indicate Requirement Levels</i> , S. Bradner http://ietf.org/rfc/rfc2119.txt	March 1997
[RM-ODP]	Reference Model of Open Distributed Processing ISO/IEC 10746-3:2009	2009
[UML2010]	UML Version 2.3 http://www.omg.org/spec/UML/2.3/	Version 2.3 May 2010
[XDS]	XDS.b Cross Document Exchange http://wiki.ihe.net/index.php?title=Cross-Enterprise_Document_Sharing_Implementation	
[OASIS200401]	Web Services Security X.509 Certificate Token Profile http://docs.oasis-open.org/wss/2004/01/oasis-200401-wss-x509-token-profile-1.0.pdf	OASIS Standard 200401 March 2004
[ITITF-1]	IHE ITI Infrastructure Technical Framework Volume 1 (ITI TF-1) http://www.ihe.net/Technical_Framework/upload/IHE_ITI_TF_Rev8-0_Vol1_FT_2011-08-19.pdf	Revision 8.0 - 19 August 2011
[ITITF-2A]	IHE IT Infrastructure Technical Framework Volume 2a (ITI TF-2a), Revision 8.0 - 19 August 2011 http://www.ihe.net/Technical_Framework/upload/IHE_ITI_TF_Rev8-0_Vol2a_FT_2011-08-19.pdf	Revision 8.0 - 19 August 2011

Tag	Name	Version Release Date
[ITITF-2B]	IHE IT Infrastructure Technical Framework Volume 2b (ITI TF-2b), Revision 8.0 - 19 August 2011 http://www.ihe.net/Technical_Framework/upload/IHE_ITI_TF_Rev8-0_Vol2b_FT_2011-08-19.pdf	Revision 8.0 - 19 August 2011
[ITITF-2x]	IHE IT Infrastructure Technical Framework Volume 2x (ITI TF-2x), Revision 8.0 - 19 August 2011 http://www.ihe.net/Technical_Framework/upload/IHE_ITI_TF_Rev8-0_Vol2x_FT_2011-08-19.pdf	Revision 8.0 - 19 August 2011
[ITITF-3]	IHE IT Infrastructure Technical Framework Volume 3 (ITI TF-3), Revision 8.0 - 19 August 2011 http://www.ihe.net/Technical_Framework/upload/IHE_ITI_TF_Rev8-0_Vol3_FT_2011-08-19.pdf	Revision 8.0 - 19 August 2011
[W3C-XML-1.1]	http://www.w3.org/TR/2006/REC-xml11-20060816	Version 1.1 September 2006
[XDS.b SM]	XDS.b – Supporting material ftp://ftp.ihe.net/TF_Implementation_Material/ITI/packages/XDSb.Support.Materials.v9.zip	Version 9