



nehta

nehta Icon Style Guide

December 2011 - Version 1

Welcome to the netha style guide for the correct use and application of all icons. This document outlines the appropriate use, context and conditions for how each icon should be used and presented. This style guide provides a consistent framework for all icon use to ensure standardisation across all netha material and to help maintain the brand integrity.

This style guide is for the use of all established icons. It outlines how each icon should look, how it should be presented, and the context in which it is appropriate for it to be used. It sets clear directions for how icons should be applied and ensures that appropriate standards are applied for their use. This style guide will be revised periodically to accommodate changes, usage, and the inclusion of new icons.

Please direct all questions regarding the style guide or the use of individual icons to the Enterprise Architecture Office (EAO) or email: architecture@netha.gov.au.

1	Introduction
2	Contents
3	The benefits of the style guide and who should use it
4	Designer's notes
5	Icons – Correct usage and exclusion zone
6	Icons – Incorrect usage
7	File formats
8	CI Team icons
9	Process of ordering new icons
10-12	Alphabetical list of icons
13-23	The icons

Who should use the style guide?

This style guide is for the internal use of nehta employees and should be used as a regular reference tool for all marketing and promotional material.

Through the correct application and display of icons as recommended in this style guide, the nehta brand will be consistently represented thus promoting consistent branding in all materials where icon use is prevalent.

Consistency is achieved through the style guide providing detailed information about the use of the icons, their placement, and the conditions in which they should be presented. Adherence to this style guide will ensure that the message that the nehta icons represent is easily understood and recognisable.

The style guide also acts as a central library of the nehta icons and provides a single and consistent reference point for employees to choose an appropriate icon. The style guide also ensures nehta has a centralised record of icons, their format, structure and design.

The development of the nehta icons was to represent complex process and messages with simplified visuals. The figures were designed as a minimalistic version of the human form to allow for flexible applications. Since most icons are to be viewed at a smaller size; features such as arms, legs and facial features were removed to give the icons a simplistic view.

Features on the icons such as arms, legs and facial features were simplified, again to allow for variations in print size. In this way they are suitable for both very small and large reproduction

Due to the space restrictions that come with being an icon, you need to represent as many ideas with the least amount of visual clues. The space allowed for the nehta icon development is 30mm x 30mm. In order to achieve the most real estate in this area, the design was altered to give predominance to the head and body primarily. This allows for additional icons to be added to become secondary icons. (e.g. "Doctor" becomes "Doctor with X-ray")

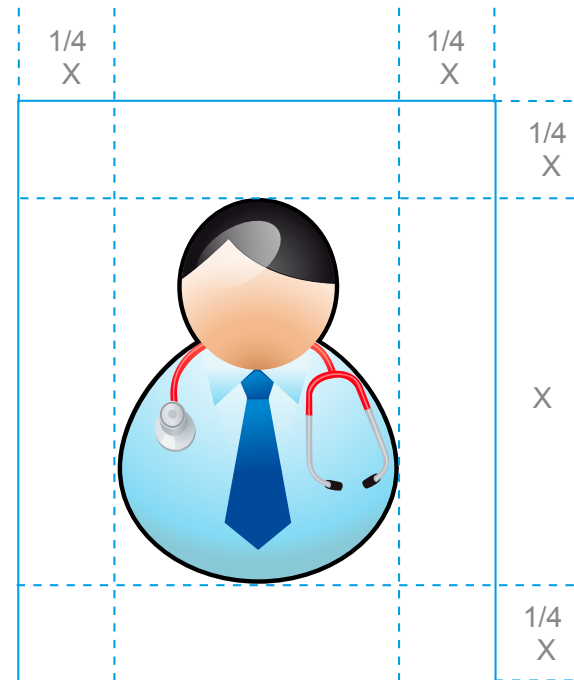
These icons also need to be individualised to represent the unique message they each needed to convey, while still clearly forming part of the broader Nehta icon family to ensure cohesion and consistent message.

These icons each have to portray a clean message instantly in their own right so that the reader can then interpret process connections between a series of icons quickly from the visual format. It was also very important that the icons retained the humanistic focus to represent the medical field and people related industry they depict.

- Ensure the correct file format is used at all times in accordance with the file format considerations listed for each icon.
- Ensure the icon size and structure is maintained at the same scale presented in the style guide.
- Ensure the context in which the icon is presented remains consistent to that which is presented in the style guide for each icon.
- Ensure the colours for each icon remain consistent to how they are presented in the style guide.
- Ensure the exclusion zone around each icon is maintained in each representation of the icon.

(Please refer to the glossary of terms.)

The recommended minimum clearance is to protect the appearance of the icon. As the icons will appear in many different display media, from print to web, this exclusion zone will help to give the icons clarity and a presence. This is not a placement guide but a minimum only.



The exclusion zone is the minimum distance around the icon of which text or graphics should not enter. The height is $\frac{1}{4}$ of the average height of an icon

Some examples of incorrect use of the Master Brand are shown here.

- Do not flip or rotate the icons. The direction they are presented in the style guide must be maintained at all times.
- Do not modify the colour, size, form or shape of the icons at any time from what is presented in the style guide.
- Do not remove any elements of the icons.

The icons should never be altered or distorted in anyway.

Never distort an icon



Never change the relationship of the elements in an icon



Never flip or rotate an icon



Never use an icon on inappropriate background colours



Never use colours other than those specified in these guidelines



Never encroach upon the minimum clear space of an icon



When using any netha icon it is important to use the best format for your application to ensure a high quality finish. There is no single format that works well in ALL environments, so it is important to consider the different options available for the medium and scale of icon material. Specific considerations include file size, transparent background, scalability and non pixelation. Following is a list of different format options to use to help decide on the best file format to match the final delivery medium.

PNG - PNG (Portable Network Graphics) is a bit-mapped graphics format created to replace the 256 limited colour GIF format. PNG offers the ability to provide transparent backgrounds which allow it to be placed over coloured backdrops.

- Pros: Good for Microsoft Office documents, has transparent background, file size is manageable

- Cons: Not suitable for printing

Please note that the CI Team icons have a folder, which contains PNG icons at the following sizes 16x16 pixels, 24x24px, 32x32px, 64x64px, 256x256px and 64x32px. All icons are on a transparent background

PDF - PDF (Portable Document Format) is an open file format created for representing two-dimensional documents in a device independent and resolution independent fixed-layout document format. Each PDF file encapsulates a

complete description of a 2D document that includes the text, fonts, images, and 2D vector graphics that compose the document.

PDF files are viewed from many sources from web browsers to Adobe Acrobat. This feature ensures that a valid PDF will render exactly the same regardless of its origin or destination (but depending on font availability when fonts are not encapsulated in the file).

- Pros: High quality of printing, Small file size good for emailing. Easily read

- Cons: Limited options to edit a PDF file

EMF - EMFs have been provided for use on modelling packages such as Enterprise Architect (which does not support PNG or PDF). EMFs should be avoided in Microsoft powerpoint and word diagrams, as the Microsoft's versions of Word and Powerpoint for Macs does not correctly support EMF.

CI team have an additional set of PNG icons. These icons have transparent backgrounds and are created at the following sizes:

- 16x16 pixels
- 24x24px
- 32x32px
- 64x64px
- 256x256px
- 64x32px

The sub folder is located in the individual folder of the icon and is names "CI PNGs"

Documents and Grouping Icons

Documents and Grouping icons represent the meta data types within Data Specifications and Structured Document Templates.

- Data Group
- Section
- Structured Document
- Choice

Data Types Icons

Data Types icons represent the types of information bound to each data element in the information specifications.

- Text
- CodeableText
- CodedText
- Boolean
- Any
- Integer
- Real
- Duration:
- TimeInterval:
- DateTime
- Quantity
- QuantityRatio
- QuantityRange
- UniqueIdentifier
- Link
- Encapsulated Data
- Participation: For further information refer to the National E-Health Transition Authority, September 2010, Participation Data Specification, Version 3.0

http://www.nehta.gov.au/component/docman/doc_download/1122-participation-dataspecification-v30

Cardinality Icons

Cardinality icons represent the obligation of each grouping and data element component in a data specification or SDT and specifies whether or not a data component must be populated in the logical record architecture of a message. NEHTA intends that all data components are implemented.

- EssentialOptionalConditional
- Optional Multiple
- Essential Multiple
- Prohibited
- Conditional Multiple:

From time to time the need will arise for a new icon to be developed. The following process outlines the steps needed to action this request.

1. Check the style guide to see if the icon you are looking for already exists.
2. If not, check to see if there is a similar icon that is appropriate to use.
3. If no icon is present or acceptable, send a request to Enterprise Architecture Office (EAO) or email architecture@nehta.gov.au for the development of a new icon. In your request please provide:
 - Name of new icon
 - Rationale for new icon
 - Description of context for new icon
 - Text to accompany new icon
 - Deadline for new icon
4. The Enterprise Architecture Office will contact Floating Mountain Design at info@floatingmountain.com.au and request that the icon be developed.
5. Once the icon has been designed and created, the icon will be emailed directly back to you for review and confirmation.
6. Once the design for the new icon has been finalised, it will be approved by netha to be added to the icon database in this style guide.

13	Access Control Rights	13	Buyer	14	Cloud Computing Service	15	Date Time
13	Accountant	14	Calendar	14	Cloud Computing Service - IaaS	15	Developer
13	Acute Care	14	Call centre worker 01	14	Cloud Computing Service - PaaS	15	Diagnostic Image Request
13	Adapter	14	Call centre worker 02	14	Cloud Computing Service - SaaS	15	Diagnostic Imaging
13	Admin Support Officer	14	Card Reader	14	Codeable Text	15	Diagnostic Report and Image
13	Aged Care	14	Care Continuum	15	Coded Text	15	Diagnostic Report Repository
13	Allied Health	14	Care Coordination Solutions	15	Collaboration	15	Diagnostic Service Solutions
13	Any	14	Care Team	15	Comms & Engagement	15	Difficulty
13	Architecture	14	Care Team 02	15	Communications & Public Relations Team	16	Difficulty Halved
13	Architecture Team	14	Care Team 03	15	Communications Analyst	16	Digital Certificate
13	Audit Services	14	Carer	15	Conditional	16	Directory - White Pages
13	Authentication	14	Cataloguing	15	Conditional Multiple	16	Directory Services
13	Authorisation	14	CCA Team	15	Connectivity Architecture	16	Discharge
13	Authorisation Service	14	Certification	15	Connectivity Architecture - Left	16	Doctor - Female
13	Baby	14	Check Up	15	Connectivity Architecture - Right	16	Doctor - Male
13	Back Office Clerical	14	Checking Identity	15	Connectivity - Inbound	16	Doctor Examine
13	Barcode 01	14	Checklist	15	Connectivity - Outbound	16	Doctor Receives Discharge
13	Barcode 02	14	Child	15	Consent Individual	16	Doctor reviewing PCEHR
13	Beaker	14	Choice	15	Content Creation	16	Doctor with Beaker
13	Blood Bag	14	Clinic	15	Contract	16	Doctor with Folder
13	Blueprint	14	Clinical Leadership & Engagement Team	15	Corporate Services Team	16	Doctor with Prescription
13	Booking System / Kiosk	14	Clinical Terminologies/Models	15	CTI Team	16	Doctor with Referral
13	Boolean	14	Clinical Quality Registry	15	Data Centre	16	Doctor with Smartcard
13	Box with Barcode	14	Clipboard	15	Data Group	16	Doctor with Webcam
13	Business Analyst					16	Doctor with X-Ray

16	Doctor with X-Ray and Report	17	Governance	18	iPad - Tablet	19	Medications
16	Document	17	Health Care Reporting	18	iPhone - Smart Phone	19	Medicine
16	Duration	17	Health Education	18	IT Person	19	Microscope
16	e-health Digital Identity	17	Health Info Knowledge Bases	18	IT Software Delivery	19	Mobile Screening Service
16	eHealth Icon - Horizontal	17	Healthcare Administration Team	18	IT Support	19	Monitor
16	eHealth Icon - Vertical	17	Home Monitoring Device - Home with Monitor	18	IT Support Tech	19	Monitor Patient
16	Elder in Wheelchair	17	Hospital	18	Lawyer	19	Monitor Recovery
16	Encapsulated Data	17	Hospital with Purchase Order	18	Link	19	Mother and Baby
16	End Point Locator	17	Hospital with Request Form	18	Logistics	19	National Index
16	Enterprise Architect	17	HPI-I	18	Mail	19	National Product Catalogue
17	Eskey with Tubes	17	HPI-O	18	Male 01	19	nehta eHealth Lockup
17	Essential	17	HR Member	18	Male 02	19	nehta Logo
17	Essential Multiple	18	Identifiers	18	Male 03	19	nehta Logo Reversed
17	Exchange Format	18	IHI	18	Male 04	19	Network Cloud
17	Family	18	Implementation Team	18	Male 05	19	Network Cloud - Internet
17	Female 01	18	Individual	19	Mammogram Image	19	Network Cloud - LAN
17	Female 02	18	Individual Prevention Focus	19	Mammography Assessment	19	Network Cloud - P2P
17	Female 03	18	Individual with PCEHR	19	Mammography Hanging Protocol	20	Network Cloud - WAN
17	Female 04	18	Individual with Smartcard	19	Mammography Read	20	Network Cloud - WI-FI
17	Finance & Corp Services Team	18	Integer	19	Mammography Read Result	20	Nurse
17	Firewall	18	Integration Of Different Elements	19	Medical Chart	20	Online Imaging Services
17	Flagging	18	Inter-Organisational Communications	19	Medical Device	20	Online Pathology Services
17	Formatting - Editing	18	Internet	19	Medical Test Lab	20	Optional
17	Front Desk Clerical	18	Intra-Organisational Communications	19	Medicare Card	20	Optional Multiple
17	Gateway			19	Medicare Repository	20	Pallet

20	Participation	21	Produce Identity	22	Section	23	Template Service
20	Pathologist Sample	21	Product & Solutions	22	Secure Messaging	23	Test Analyst
20	Pathologist without Beaker	21	Development Team	22	Server	23	Text
20	Pathology Acquire	21	Product Manager	22	Server Cluster	23	Therapist
20	Pathology Reporting	21	Prohibited	22	Sign Post	23	Time Interval
20	Pathology Samples	21	Project Manager	22	Single Computer	23	Transport of a Specimen.
20	Patient having Mammogram	21	Psychologist	22	Smart Card	23	Transport of a Specimen with Beaker.
20	Patient having X-Ray	21	Public Health - Prevention	22	Software	23	Unique Identifier
20	Patient Identity	21	Public Relation	22	Software Design & Development	23	Vendor Partner - eHealth Solution
20	Payroll	21	Purchase Order	22	Software Test Lab	23	Vendor Partner - Software Provider
20	PCEHR Empty	21	Purpose	22	Solution Architect	23	Vertical Care Continuum
20	PCEHR Full	21	Quantity	22	Specimen Identification & Packaging	23	Video Conferencing - Doctor Remote
20	PCEHR System	21	Quantity Range	22	Standards Team	23	Video Conferencing - Home with WebCam
20	People & Culture Team	21	Quantity Ratio	22	Storage	23	Video Conferencing - Hospital with WebCam
20	Person with Contract	21	Radar	22	Strategy	23	Video Conferencing - Hospital with WebCam
20	Personal Health Records	21	Radiologist	22	Strategy Team	23	Video Conferencing - Individual with Care Team
20	Pharmacist	21	Radiologist with X-ray Report	22	Structured Document	23	Video Conferencing - Surgeon with WebCam
20	Phone	21	Radiologist without X-ray	22	Sub-Acute Care	23	Video Conferencing - Surgeon with WebCam
21	Phoropter	21	Real Number	22	Surgeon no Mask	23	Video Conferencing - Theatre with WebCam
21	Policy	21	Receptionist	22	Surgeon Operation	23	Video Conferencing - Theatre with WebCam
21	Policy & Information Services Team	21	Referral	22	Synoptic Testing	23	Warehouse
21	Portal	22	Regional / State / Territory Repository	22	TeleHealth - Clinical	23	Warehouse Employee
21	Prescription Exchange Services	22	Report on Patient	22	TeleHealth - Doctor		
21	Privacy	22	Roadmap	22	TeleHealth - Hospital		
21	Process Timer			23	TeleHealth - Individual		



Access Control Rights
Depicts possession of an access right.



Accountant
Represents accounting role.



Acute Care
Used to depict a patient in an acute care settings (e.g. hospital).



Adapter
Depicts an interface between different IT systems where data translation / transformation is required.



Admin Support Officer
Represents any administrative or support role/ position.



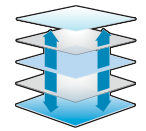
Aged Care
Used to depict the delivery of care in an aged care setting.



Allied Health
Provision of care by an allied health worker e.g. Physiotherapist, optometrist, occupational therapist, etc (not pharmacist - see below).



Any
A data element where the data type to be used is conditional upon another data component.



Architecture
Depicts different architectural view points, such as Interoperability, Enterprise or Solution Architecture.



Architecture Team
Represents Enterprise Architecture team.



Audit Services
PCEHR Audit Service.



Authentication
Depicts a token used for authentication of a provider.



Authorisation
Depicts the approval process for access.



Authorisation Service
Use to depict a service which handles access control, consent and emergency access.



Baby
Used to depict neonatal care.



Bank Office Clerical
Back office worker / record manager.



Barcode 01
Can be used as a bar code on a script, request form, etc.



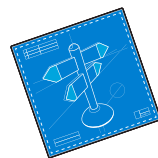
Barcode 02
Can be used as a bar code on a script, request form, etc.



Beaker
Depicts the pathology domain, for example can be used for pathology test requests, results.



Blood Bag
Depicts a blood product (related to NPC).



Blueprint
Represents any type of blueprint.



Booking System/Kiosk
Used to depict a self service kiosk.



Boolean
A primitive data type having one of two values: true and false.



Box with Barcode
Supply of a package in a supply chain context.



Business Analyst
Represents a business analyst role; analyse organisations, functions, processes.



Buyer
Used to depict a buyer in a supply chain context.



Calendar
Used to depict appointment booking solutions.



Call centre worker 01
Individual who works in a health call centre.



Call centre worker 02
Individual who works in a health call centre.



Card Reader
Represents a card reader.



Care Continuum
Depicts stages in a patient journey or functional areas of a health sector.



Care Coordination Solutions
Depicts the domain of care coordination.



Care Team
Depicts a hospital based care team.



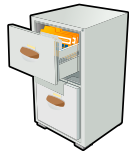
Care Team 02
Depicts a primary care team in the community.



Care Team 03
Depicts a specialist based care team.



Carer
Carer either in an home setting or an aged care facility.



Cataloguing
Represents classification, categorisation.



CCA Team
Represents Conformance, Compliance and Accreditation Team.



Certification
Used to depict the process of conformance testing and certification.



Check Up
Depicts a stethoscope.



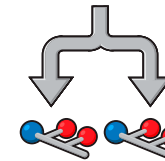
Checking Identity
Checking identity.



Checklist
Clinical assessment tool.



Child
Used to depict a child.



Choice
A decision to be made at run-time between a set of data groups defined at design time, such that one and only one member of the set of choices must be chosen.



Clinic
A clinic or a practice.



Clinical Leadership & Engagement Team
Represents clinical leadership and engagement team e.g. Clinical Safety.



Clinical Terminologies/Models
Represents clinical terminologies and information models.



Clinical Quality Registry
Any secondary use repository or Clinical Quality/Research Repository e.g. Data Mart, Data Warehouse, Database.



Clipboard
Alternative icon for checklist.



Cloud Computing Service
Cloud computing - combined icon encompassing all three service models.



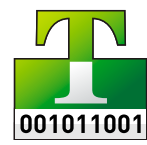
Cloud Computing Service - IaaS
Cloud computing - Infrastructure as a Service.



Cloud Computing Service - PaaS
Cloud computing - Platform as a Service.



Cloud Computing Service - SaaS
Cloud computing - Software as a Service.



Codeable Text
Coded text with exceptions; supports various ways of holding text, both free text and coded text.



Coded Text
Coded text without exceptions; text with code mappings. Values in this data type must come from the bound value domain, with no exceptions.



Collaboration
Used to depict working together (Cooperative arrangement between 2 or more parties), to achieve a goal or outcome.



Comms & Engagement
Represents Internal or External Communications and Engagement with Stakeholders.



Communications & Public Relations Team
Represents comms and PR team e.g. stakeholder engagement.



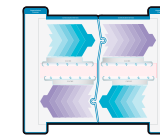
Communications Analyst
Represents communications and engagement for internal and external stakeholders.



Conditional
The data component is considered Essential only on satisfaction of a given condition.



Conditional Multiple
The data component is considered Essential only on satisfaction of a given condition, but may be populated and repeated many times.



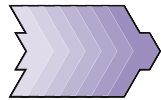
Connectivity Architecture
Technical architecture for connectivity across two organisations.



Connectivity Architecture - Left
Technical architecture for connectivity at one organisation.



Connectivity Architecture - Right
Technical architecture for connectivity at one organisation.



Connectivity - Inbound
Generic inbound communication services.



Connectivity - Outbound
Generic outbound communication services.



Consent Individual
Consent by an individual.



Content Creation
Content creation activity.



Contract
Used for representing any contract, such as, but not limited to federation contracts.



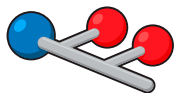
Corporate Services Team
Represents internal corporate services team e.g. HR, Finance.



CTI Team
Represents Clinical Terminology and Information(Model) Team.



Data Centre
Facility/building used to house/host computer systems and associated components such as storage.



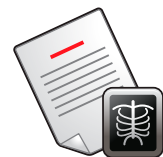
Data Group
A health topic or concept comprising a logical set of related data elements.



Date Time
A single date and/or time. Has the ability to indicate a level of precision, but not whether the date/time is estimated.



Developer
Represents software/product development.



Diagnostic Image Request
Used to depict requesting a diagnostic image.



Diagnostic Imaging
Represents the domain of diagnostic imaging, including x-rays, ultrasound, MRI, cat scans, etc.



Diagnostic Report and Image
Used to depict diagnostic report and image.



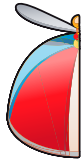
Diagnostic Report Repository
Diagnostic Report repository.



Diagnostic Service Solutions
Covers the domain of diagnostic services.



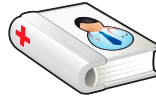
Difficulty
1 propeller head.



Difficulty Halved
1/2 a propeller head.



Digital certificate.
Digital certificate.



Directory - White Pages
Represents HPD, part of HI service e.g. by provider, complements existing Yellow pages directory.



Directory Services
Yellow pages style listing of health care provider service.



Discharge
Discharge of an individual.



Doctor - Female
Any medical doctor (female gender) - including GPs and specialists. Male equivalent available.



Doctor - Male
Any medical doctor (male gender) - including GPs and specialists. Male equivalent available.



Doctor Examine
Doctor examine.



Doctor Receives Discharge
Doctor receives discharge.



Doctor reviewing PCEHR
Doctor reviewing PCEHR.



Doctor with Beaker
Doctor with beaker.



Doctor with Folder
Doctor with Folder.



Doctor with Prescription
Doctor with Prescription.



Doctor with Referral
Doctor with referral.



Doctor with Smartcard
Doctor with smartcard.



Doctor with Webcam
Doctor with webcam.



Doctor with X-ray
Doctor with X-ray.



Doctor with X-ray and Report
Doctor with X-ray and report.



Document
Should be: used to depict an electronic or paper document.



Duration
The period of time during which something continues. Consists of a value and a unit which represents the time value, e.g. hours, months.



e-health Digital Identity
e-health identity.



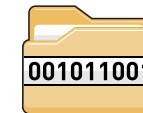
eHealth Icon - Horizontal
National eHealth Icon - Horizontal.



eHealth Icon - Vertical
National eHealth Icon - Vertical.



Elder in Wheelchair
Used to depict an elder in a wheelchair.



Encapsulated Data
Data that is primarily intended for human interpretation or for further machine processing outside the scope of the information specification, e.g. multimedia data.



End Point Locator
Represents an End Point Location Service for finding web service end points.



Enterprise Architect
Represents EA role; Architect with plans.



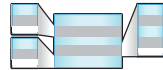
Esky with Tubes
Used to depict a set of pathology samples being collected / transported.



Essential
The data component is considered a mandatory component of information and required in order for the entry to make sense.



Essential Multiple
The data component must be populated and may be repeated many times. An ordered list is implicit.



Exchange Format
Transformation and translation between exchange formats.



Family
Used to depict a family.



Female 01
Female individual.



Female 02
Female individual.



Female 03
Female individual.



Female 04
Female individual.



Finance & Corp Services Team
Represents finance and corporate services team.



Firewall
Used to depict hardened interfaces to services.



Flagging
Used to depict a request with a flag on it.



Formatting - Editing
Formatting and editing activity.



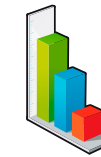
Front Desk Clerical
Medical reception staff member.



Gateway
Used to depict a gateway in a supply chain context.



Governance
Used to depict a governance board.



Health Care Reporting
Secondary uses.



Health Education
Used to depict education in the health industry.



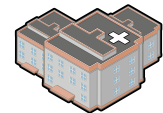
Health Info
Knowledge Bases Health info knowledge bases.



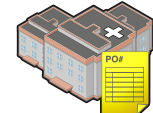
Healthcare Administration Team
Used to depict a Healthcare Administration Team.



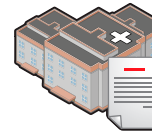
Home Monitoring Device - Home with Monitor
Represents all generic home monitoring devices e.g. blood pressure monitor.



Hospital
Acute care facility.



Hospital with Purchase Order
Used to depict a hospital ordering products in a hospital or institutional context.



Hospital with Request Form
Used to depict requesting in a supply chain context.



HPI-I
Health care provider identifier for individuals.



HPI-O
Health care provider identifier for organisations.



HR Member
Represents the HR function. Part of PCC.



Identifiers
Covers the domain of UHI.



IHI
Used to depict the Individual Healthcare Identifier.



Implementation Team
Represents Implementation Team.



Individual
Used to depict an individual.



Individual Prevention Focus
Represents chronic disease management through the application of medications and lifestyle changes.



Individual with PCEHR
Consumer oriented health record.



Individual with Smartcard
Individual with Smartcard.



Integer
The mathematical data type comprising the exact integral values.



Integration Of Different Elements
Used to depict integration of a range of elements.



Inter- Organisa-tional Communications
Depicts cross organisational interactions.



Internet
Used to depict the internet.



Intra - Organisa-tional Communications
Depicts intra-organisational interactions.



iPad - Tablet
Smart device e.g. iPad, for collaboration.



iPhone - Smart Phone
Used to depict either a mobile smart phone e.g. iPhone.



IT Person
Used to depict an individual who works in the IT industry.



IT Software Delivery
Used to depict the delivery of a software.



IT Support
Used to depict an IT help desk.



IT Support Tech
IT tech support.



Lawyer
Represents legal role.



Link
A general link, reference or pointer to an object, data or application that exists logically or is stored electronically in a computer system.



Logistics
Used to depict logistics in a supply chain context.



Mail
SNAIL mail or email.



Male 01
Male individual.



Male 02
Male individual.



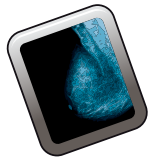
Male 03
Male individual.



Male 04
Male individual.



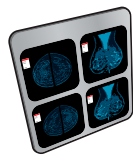
Male 05
Male individual.



Mammogram Image
Mammogram image.



Mammography Assessment
Mammography assessment.



Mammography Hanging
Protocol Hanging protocol for comparing images from current screen with images from the woman's previous screen.



Mammography Read
Mammography read.



Mammography Read Result
Result of a mammography read.



Medical Chart
Used to depict a medical chart.



Medical Device
Represents medical equipment or device used in hospital, home, GP office.



Medical Test Lab
Represents medical testing centre/ facility.



Medicare Card
Medicare Card.



Medicare Repository
Medicare repository.



Medications
Used to depict medications.



Medicine
Used to depict medicines.



Microscope
Used to depict a microscope.



Mobile Screening Service
Mobile screening service.



Monitor
Used to depict monitoring and/or a computer monitor.



Monitor Patient
Monitoring a patient.



Monitor Recovery
Monitoring a patient in the lead up to discharge in acute care.



Mother and Baby
Used to depict perinatal care.



National Index
Used to depict national indexing service.



National Product Catalogue
Used to depict the National Product Catalogue (NPC).



nehta eHealth Lockup
Combined NEHTA and National eHealth Icons.



nehta Logo
NEHTA logo.



nehta Logo Reversed
Used underneath the NEHTA logo on dark backgrounds (note background not included - for display, only).



Network Cloud
Generic network cloud.



Network Cloud - Internet
Public network.



Network Cloud - LAN
Local area network (Internal).



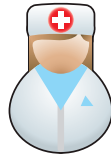
Network Cloud - P2P
Point 2 point network connection.



Network Cloud - WAN
Wide area network (External).



Network Cloud - WI-FI
Network cloud with WI-FI.



Nurse
Used to depict a nurse.



Online Imaging Services
Used to depict either an imaging request service, imaging report store or an image store.



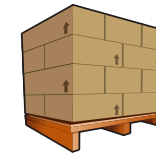
Online Pathology Services
Used to depict either a pathology request service or a pathology report store.



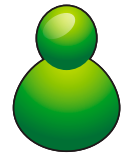
Optional
The data component is not considered a mandatory component of information and is not required in order for the entry to make sense.



Optional Multiple
The data component is optional but may be populated and repeated many times. An ordered list is implicit.



Pallet
Used to depict a pallet.



Participation
Enables a document recipient to identify the participant within their own systems. The participant can be a person, organisation or system. (see additional text in section)



Pathologist
Used to depict pathologist.



Pathologist Sample
Used to depict the sample taking for Pathology.



Pathologist without Beaker
Used to depict a pathologist without a beaker.



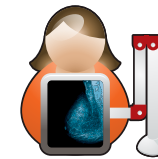
Pathology Acquire
Icons used for acquiring pathology samples.



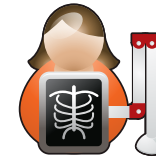
Pathology Reporting
Pathology reporting.



Pathology Samples
Pathology take sample.



Patient having Mammogram
Patient having mammogram.



Patient having X-Ray
Used to depict the collection of diagnostic images.



Patient Identity
Patient identity.



Payroll
Represents the payroll function. Part of PCC.



PCEHR Empty
A provider centric health record.



PCEHR Full
A provider centric health record.



PCEHR System
A provider centric health record.



People & Culture Team
Represents People Culture and Change (PCC) business area or unit.



Person with Contract
Represents legal commercial contract.



Personal Health Records
Used to depict the personal health records.



Pharmacist
Used to depict pharmacist.



Phone
An instrument for communication.



Phoropter
An instrument used by eye care professionals.



Policy
Can be used whenever any general policy is to be shown.



Policy & Information Services Team
Represents policy and information services team e.g. CTI.



Portal
Used to depict a web server or portal service.



Prescription Exchange Services
Use to depict a service for sharing prescriptions.



Privacy
Depicts selective (e.g. privacy controlled) access to information.



Process Timer
Timer used in long running process management, which will provide alerts (technical or business) when the specified time expires.



Produce Identity
Individual undertaking an identity check.



Product & Solutions Development Team
Represents product and solutions development team.



Product Manager
Represents product manager role.



Prohibited
The data component is considered a forbidden component of information and must not be populated.



Project Manager
Represents project manager role.



Psychologist
Used to depict a psychologist.



Public Health - Prevention
Used to depict public health and/or preventative care programs.



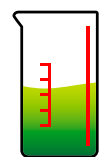
Public Relation
Role or function to promote or create goodwill for NEHTA or eHealth.



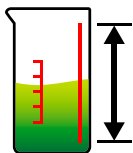
Purchase Order
Used to depict a purchase order in a supply chain context.



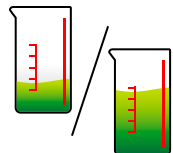
Purpose
Used to show purpose for disclosing information, e.g. whether it is secondary care or direct care (various purpose keywords can be assigned to the icon).



Quantity
Real world measurements and observations. Includes the magnitude value and the units.



Quantity Range
Two Quantity values that define the minimum and maximum values, e.g. lower and upper bounds.



Quantity Ratio
The relative magnitudes of two Quantity values (usually expressed as a quotient).



Radar
Represents searching, scanning, locating e.g. ELS.



Radiologist
Used to depict a radiologist or radiographer.



Radiologist with X-Ray-Report
Used to show a radiologist or radiographer with results.



Radiologist without X Ray
Radiologist or radiographer without X Ray.



Real Number
A computational approximation to the standard mathematical concept of real numbers also called floating point numbers.



Receptionist
Used to depict a receptionist.



Referral
Referral.



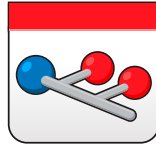
Regional / State/ Territory Repository
Regional State/ Territory IEHRs.



Report on Patient
Clinical document about an individual.



Roadmap
Used to depict a roadmap.



Section
A subdivision of the contents of the structured document into one or more sections that give a reader a clue as to the expected content.



Secure Messaging
Secure messaging.



Server
Server.



Server Cluster
Server cluster.



Sign Post
General purpose sign post icon which can be used for a range of purposes (but must use the ELS icon or the national index icons to represent those concepts).



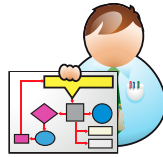
Single Computer
Desktop computer.



Smart Card
Smart card to be linked to Smart Card Reader.



Software
eHealth software.



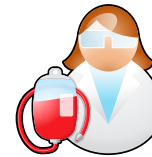
Software Design & Development
Used to depict any element of the development life cycle, including requirements, design, development, etc.



Software Test Lab
Represents software testing centre/facility.



Solution Architect
Represents SolnArch role.



Specimen Identification & Packaging
Specimen identification and packaging.



Standards Team
Represents standards both internal and external.



Storage
Used to depict data base.



Strategy
Used to depict a strategic plan.



Strategy Team
Represents strategy team.



Structured Document
A logical model of Sections and Data Groups for communicating clinical information for a given purpose.



Sub-Acute Care
Patient admitted to a subacute care facility (e.g. stroke rehab, spinal unit, etc).



Surgeon no Mask
Used to depict a surgeon.



Surgeon Operation
Used to depict a surgeon in theatre.



Synoptic Testing
Synoptic testing by a pathologist.



TeleHealth - Clinical
Represents all types of telehealth and telemedicine activities or services - Clinic or Clinician.



TeleHealth - Doctor
Represents all types of telehealth and telemedicine activities or services - Provider.



TeleHealth - Hospital
Represents all types of telehealth and telemedicine activities or services - Hospital.



TeleHealth - Individual
Represents all types of telehealth and telemedicine activities or services - Individual.

Template Service
PCEHR Template Service.

Test Analyst
Represents software/ product testing; Testing role.

Text
Character string (with optional language) containing any combination of alpha, numeric or symbols from the Unicode character set. Also referred as free text.

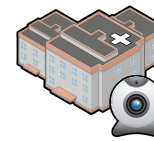
Therapist
Specialist in specific therapy.

Time Interval
An interval in time, with (optionally) a start date/ time and (optionally) an end date/time and/or a duration/width.

Transport of a Specimen
Used to depict transport of pathology specimens.

Transport of a Specimen with Beaker
Used to depict transport of pathology specimens.

Unique Identifier
A general unique value to identify a physical or virtual object or concept.



Vendor Partner - eHealth Solution
Represents external software vendor or implementation partner e.g. IBM.

Vendor Partner - Software Provider
Represents external software vendor or supplier e.g. GP Partners.

Vertical Care Continuum
Used to depict a care continuum in a vertical profile.

Video Conferencing - Doctor Remote
Represents video conferencing, doctor remote -Telehealth.

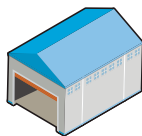
Video Conferencing - Home with WebCam
Home with webcam - TeleHealth.

Video Conferencing - Hospital with WebCam
Hospital with Webcam - Telehealth.

Video Conferencing - Individual with Care Team
Individual with webcam -Telehealth.

Video Conferencing - Surgeon with WebCam
Surgeon with webcam - TeleHealth.

Video Conferencing - Theatre with WebCam
Operating theatre with webcam - TeleHealth.



Warehouse
Used to depict a supplier in a supply chain context.

Warehouse Employee
Used to depict the reception of purchase orders in a supply chain context.

Icons created for nehta by:
Floating Mountain Design

+61 7 3355 5632
info@floatingmountain.com.au
www.floatingmountain.com.au