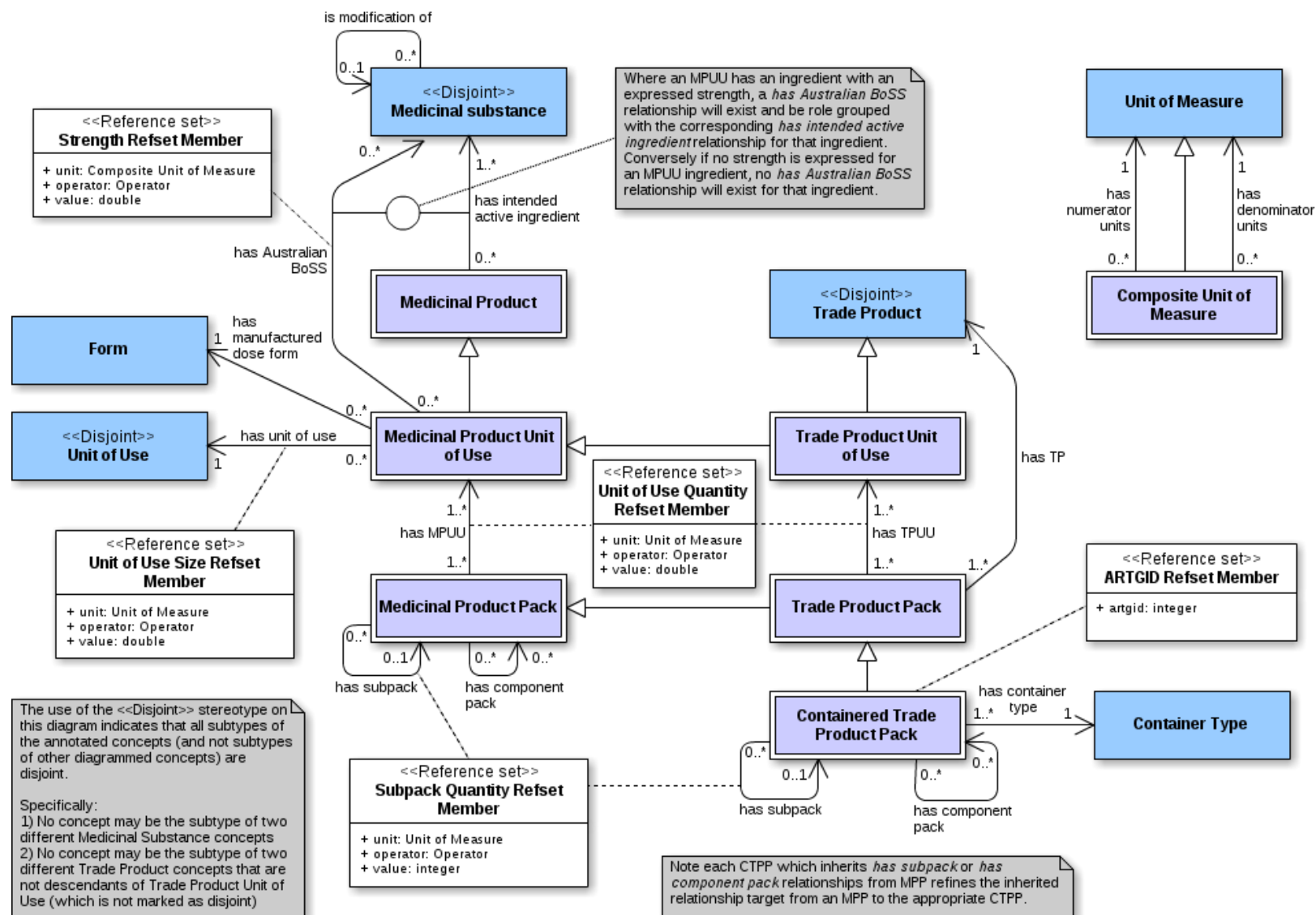


AMT v3 Model Diagram v1.1



This model diagram reflects the Stated Form of the AMT. It has been created using a combination of UML syntax and the *SNOMED CT Diagramming Guideline*.¹ The non-UML elements used in this diagram are summarised below.

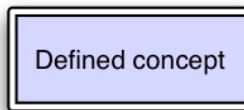
**Primitive
concept**



This diagram element represents a primitive concept.

A primitive concept is a concept that does not have sufficient defining relationships to computably distinguish them from more general concepts (supertypes).

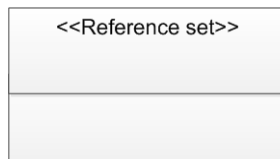
**Defined
concept**



This diagram element represents a defined concept.

A defined concept is a concept that has sufficient defining relationships to computably distinguish it from other concepts.

**Reference
set**



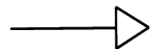
This diagram element represents a reference set member. The target of the dotted line represents the AMT component (for example, a concept, description or relationship) that is being referenced by this reference set member.

A reference set member is a uniquely identified reference (a row) within a reference set.

A reference set is a set of references to AMT components that may represent additional properties of the components, associations between members of the set with content of another nomenclature, classification or knowledge structure. A reference set may also be a logical subset of AMT components grouped for a particular purpose or those that belong to the same concept class.

Each reference set is distributed as a distinct text file separate to the RF2 core files.

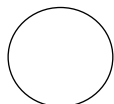
**IS A
relationship**



This diagram element represents an “IS A” relationship.

A relationship is an association between a source concept and a destination concept. An “IS A” relationship specifies the supertype (or parent) concept for a given subtype (or child) concept. The child concept shares all the definitional attributes of the parent concept, with optional, additional defining characteristics. The arrow head always points to the parent (supertype) concept.

**Attribute
group**



This diagram element represents an attribute group.

An attribute is a relationship that represents a characteristic of the meaning of a concept or the nature of a refinement. An attribute group is a collection of attributes that are logically put together to allow correct interpretation of the meaning of a concept.

¹ IHTSDO. *SNOMED CT Diagramming Guideline*. IHTSDO; 2013. Available from: http://ihtsdo.org/fileadmin/user_upload/doc/.

Publication date: 3 November 2014

Contact for enquiries

Telephone: 1300 901 001 or email: help@nehta.gov.au

Disclaimer

The National E-Health Transition Authority Ltd (NEHTA) makes the information and other material ('Information') in this document available in good faith but without any representation or warranty as to its accuracy or completeness. NEHTA cannot accept any responsibility for the consequences of any use of the Information. As the Information is of a general nature only, it is up to any person using or relying on the Information to ensure that it is accurate, complete and suitable for the circumstances of its use.

Copyright © 2014 National E-Health Transition Authority Ltd

This document contains information which is protected by copyright. All Rights Reserved. No part of this work may be reproduced or used in any form or by any means—graphic, electronic, or mechanical, including photocopying, recording, taping, or information storage and retrieval systems—without the permission of NEHTA. All copies of this document must include the copyright and other information contained on this page.

Acknowledgement

The National E-Health Transition Authority is jointly funded by the Australian Government and all State and Territory Governments.