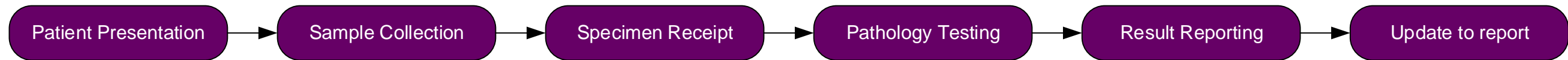
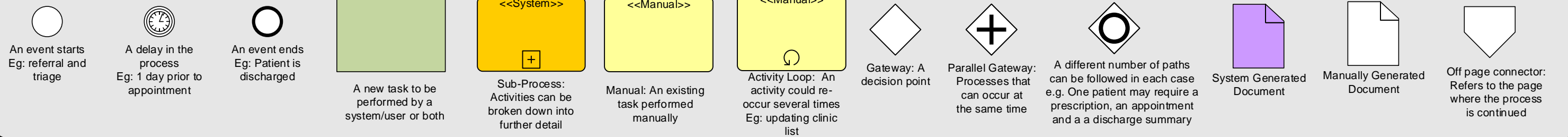
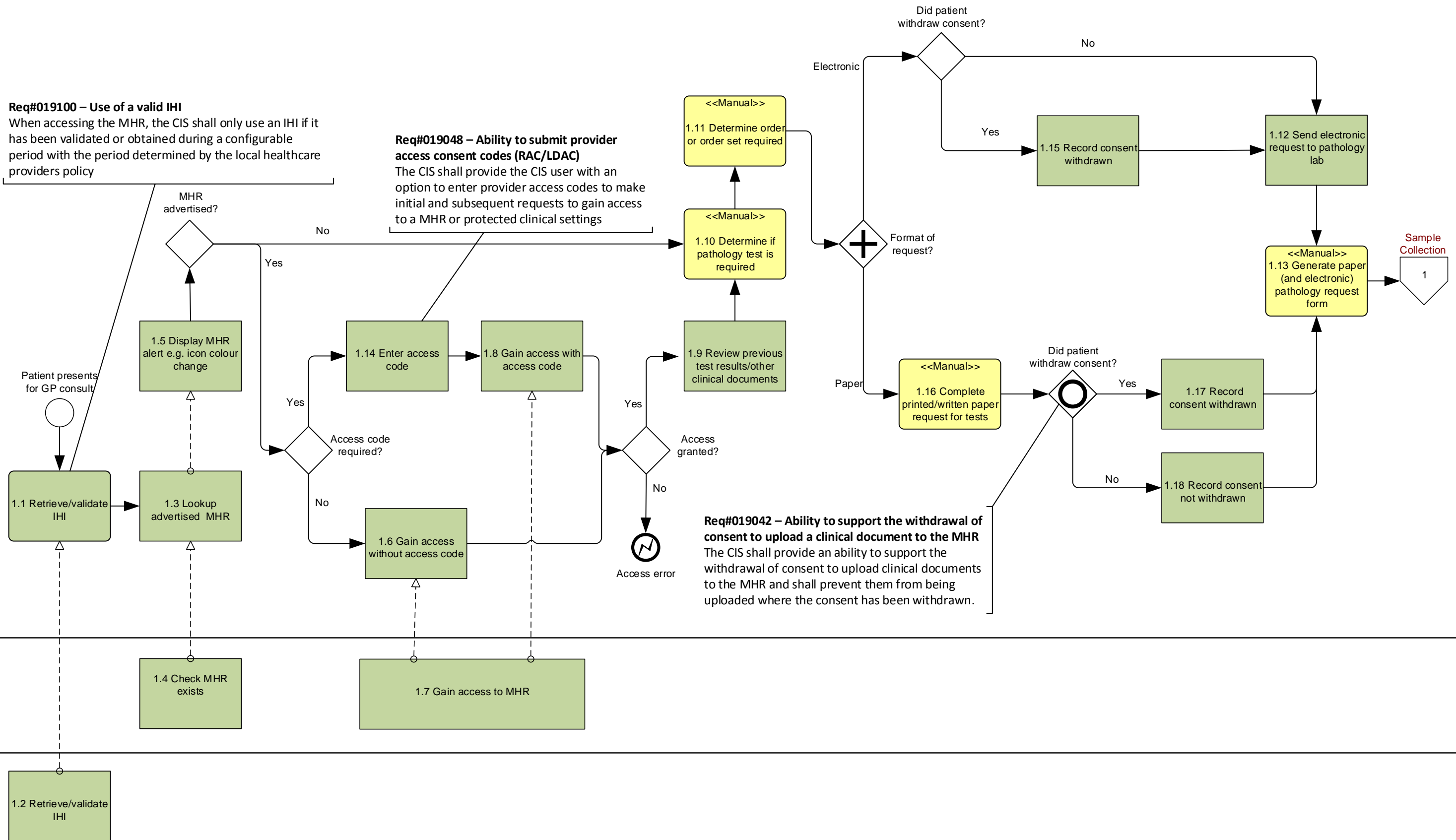


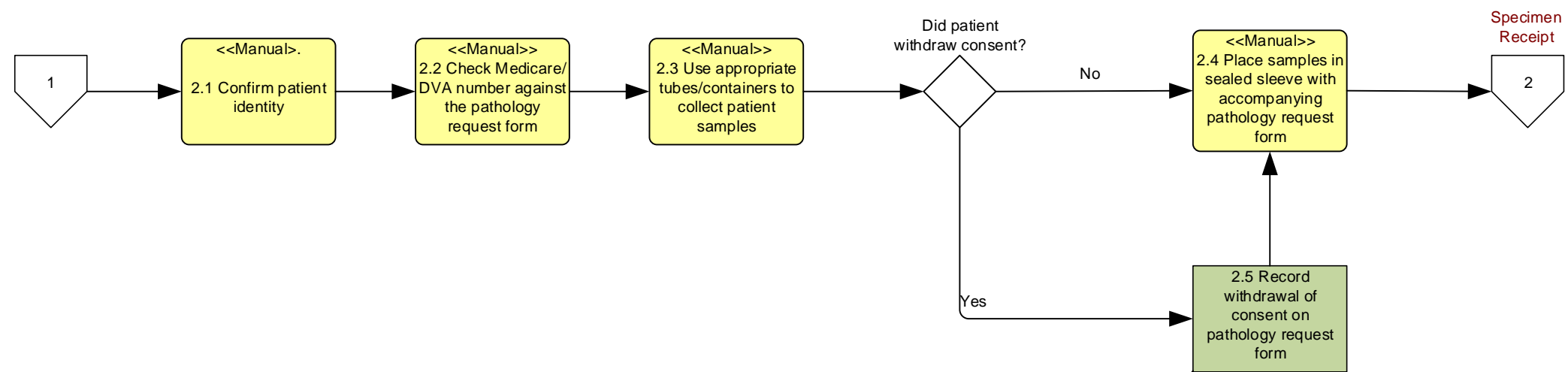
Generic Future State Process Flows – Pathology – Primary Care



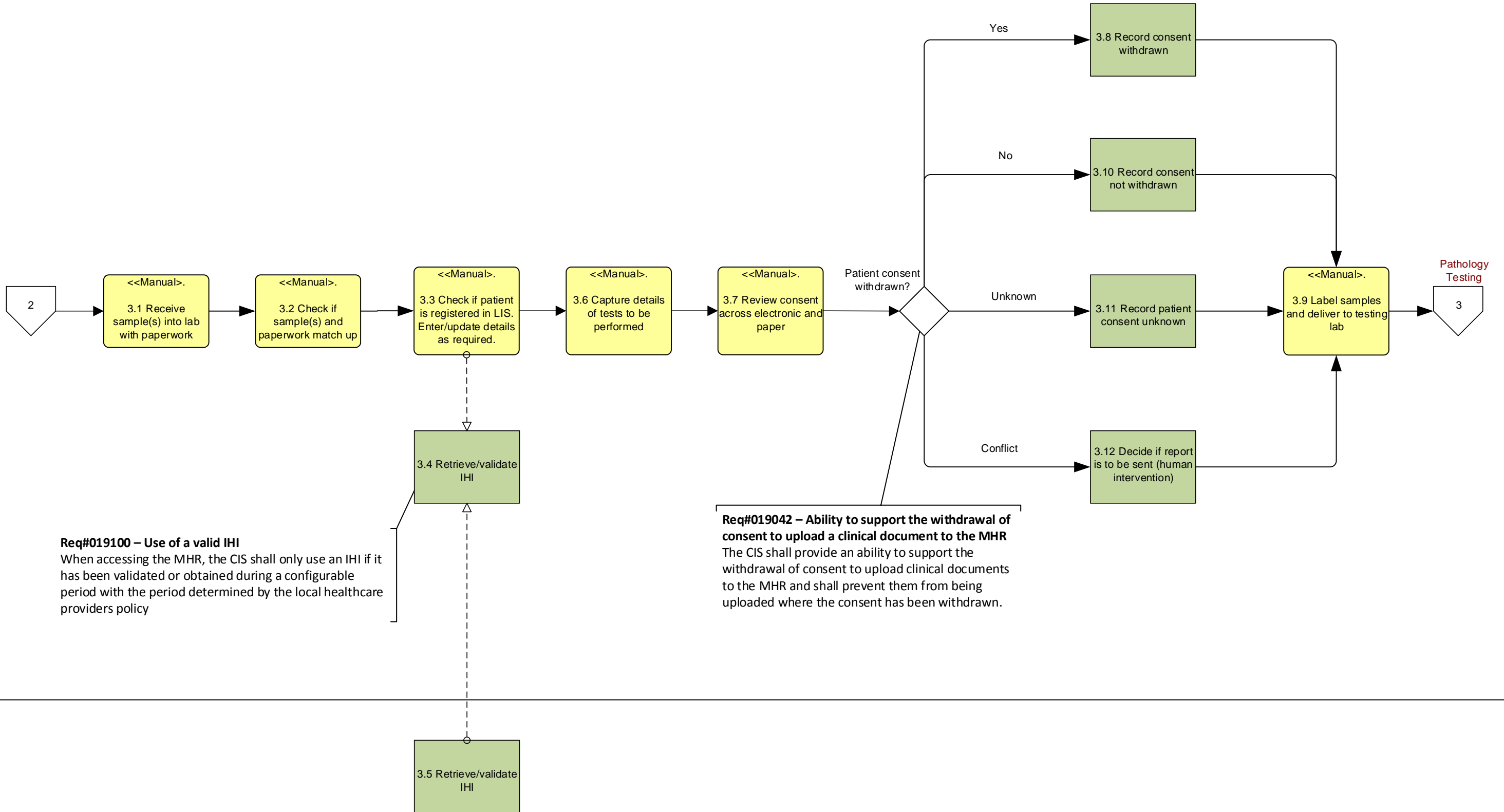
Legend



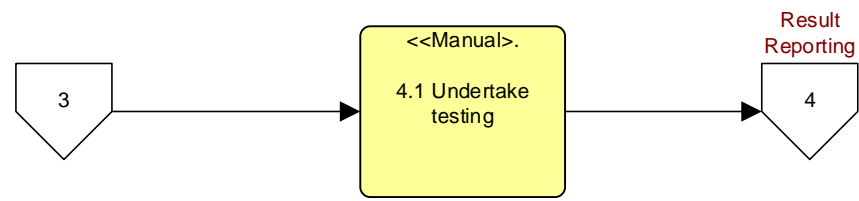




Req#019042 – Ability to support the withdrawal of consent to upload a clinical document to the MHR
The CIS shall provide an ability to support the withdrawal of consent to upload clinical documents to the MHR and shall prevent them from being uploaded where the consent has been withdrawn.



HI Service



Req#019100 – Use of a valid IHI

When accessing the MHR, the CIS shall only use an IHI if it has been validated or obtained during a configurable period with the period determined by the local healthcare providers policy.

Workflow bound – How long does it take between the patient being registered and the front desk and the report being viewed/ uploaded. It leaves the period as undefined. Might take a few hours but it may take a few days. Does the solution revalidate an IHI for a report that is corrected months later? Clear requirement for users of system to set a configurable period for revalidation.

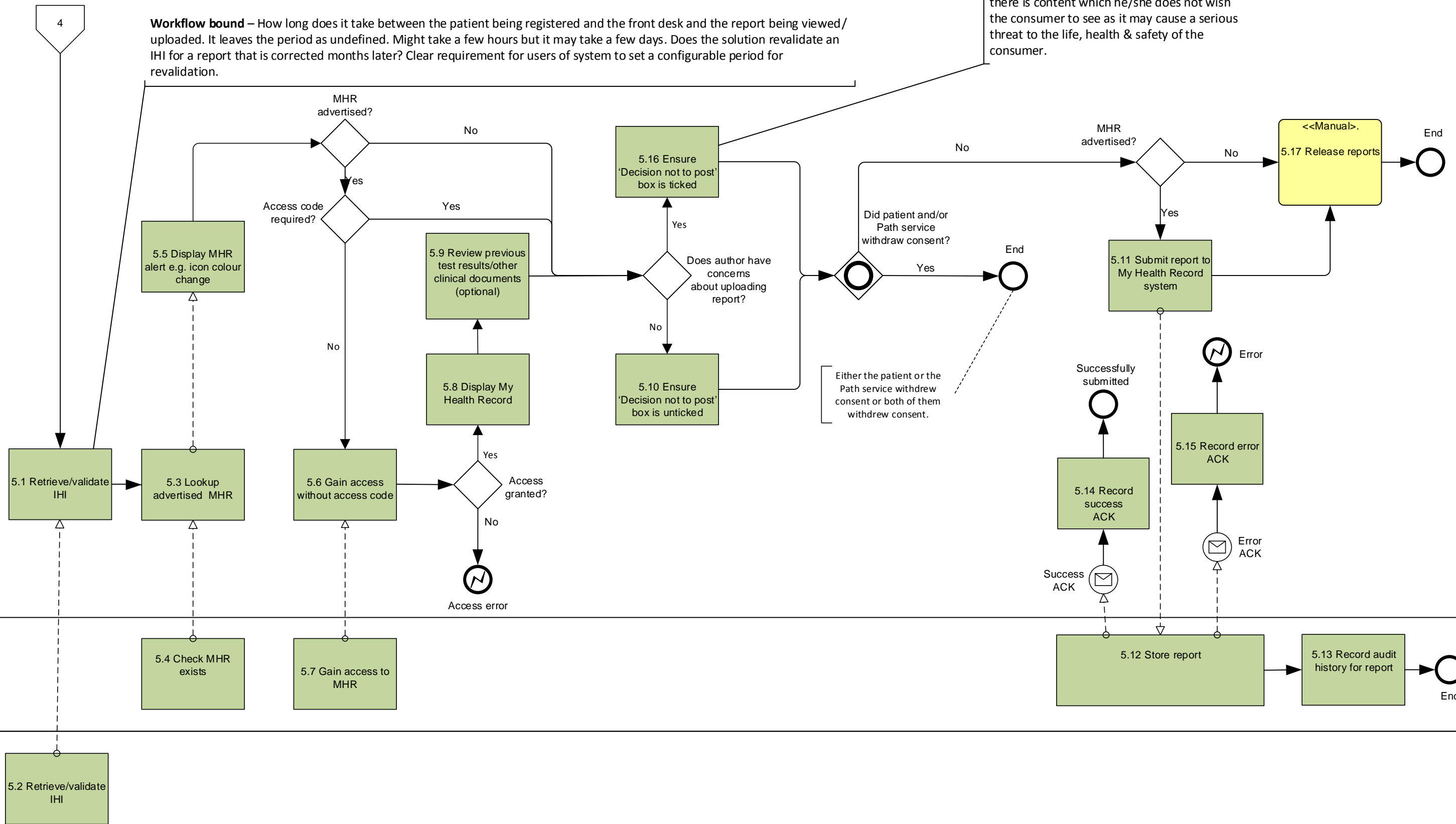
Pathologist may choose to not upload report if there is content which he/she does not wish the consumer to see as it may cause a serious threat to the life, health & safety of the consumer.

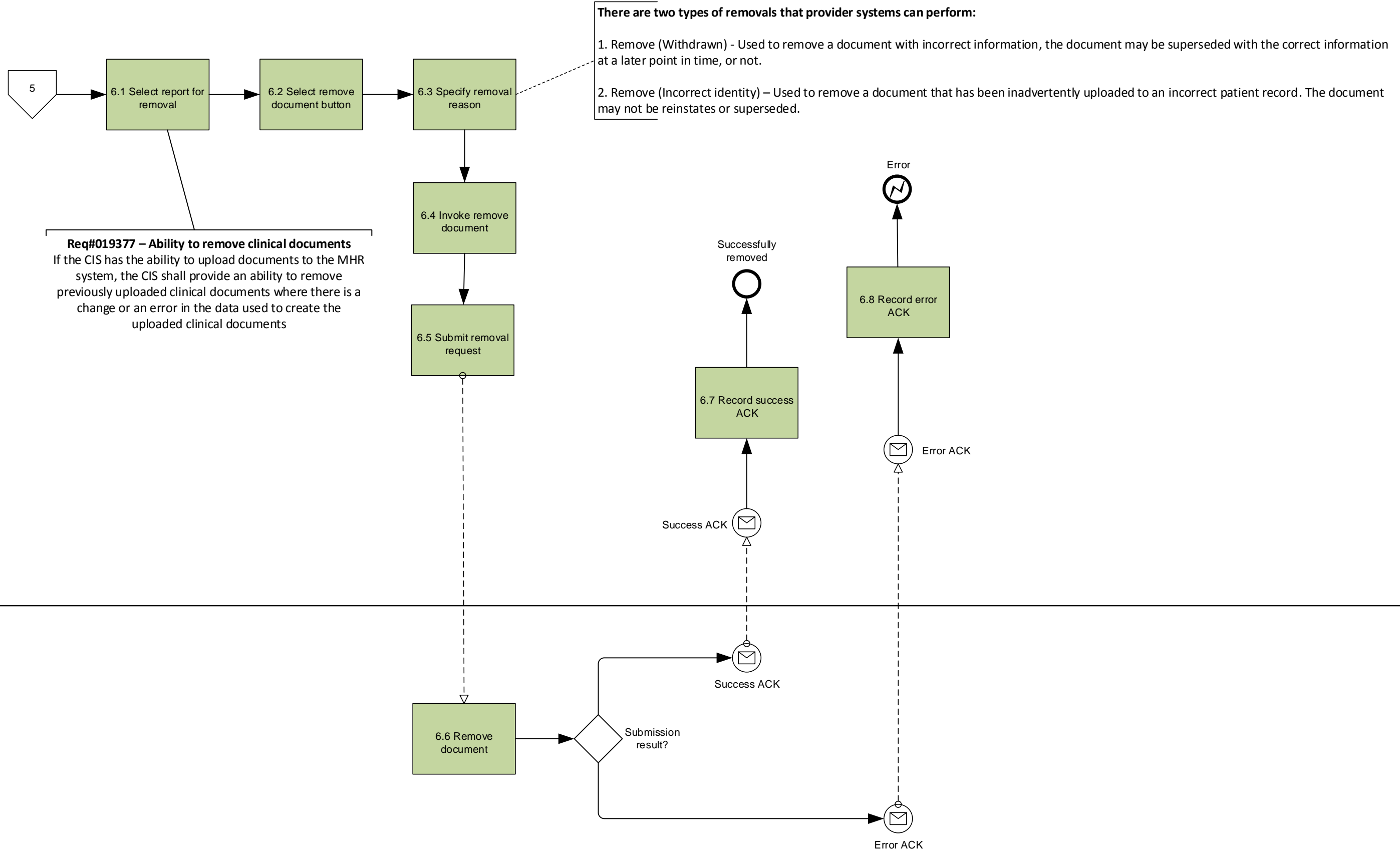
Generic Future State Process Flow – Pathology – Primary Care

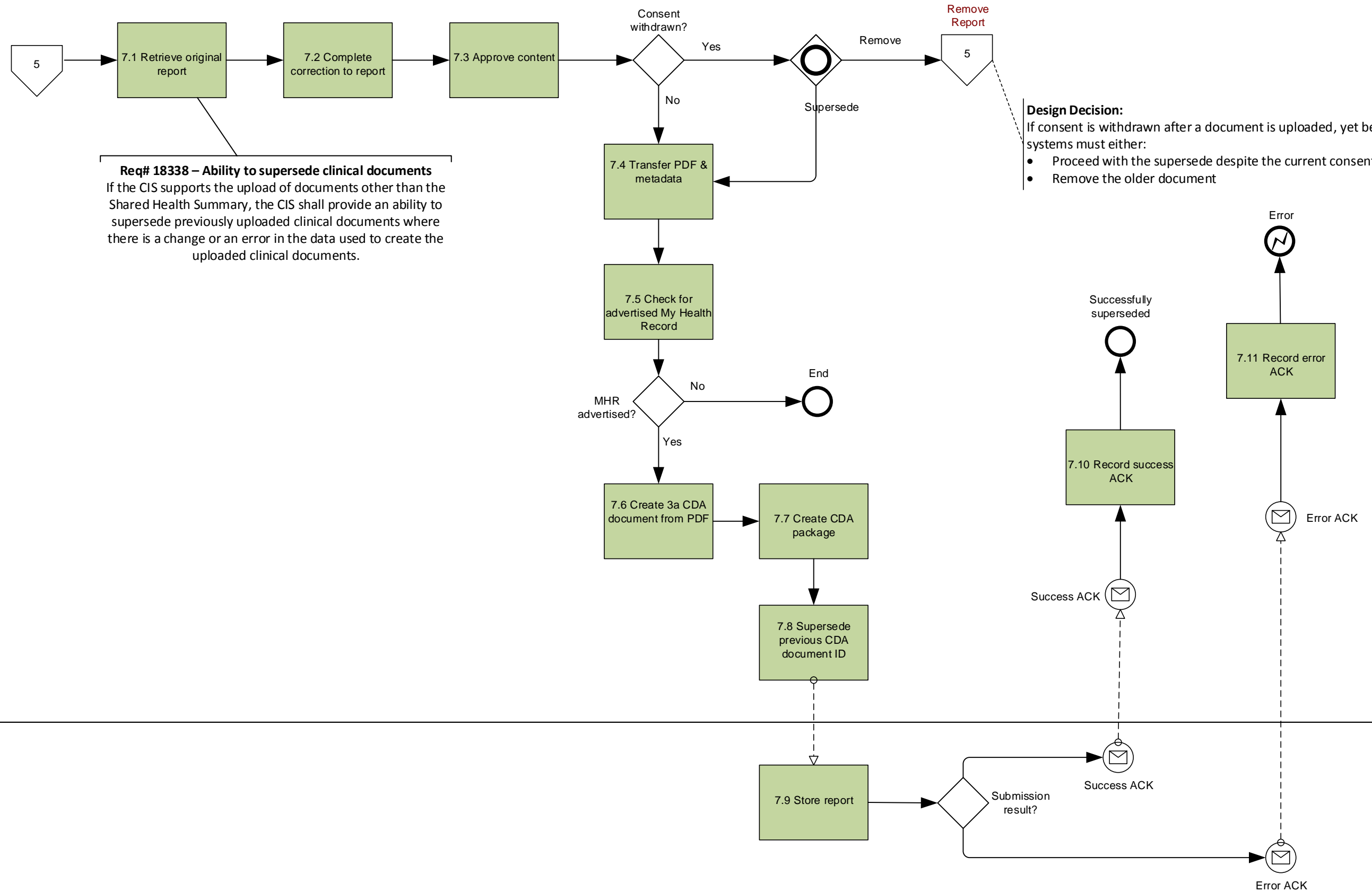
LIS

My Health Record system

HI Service







Design Decision:
 If consent is withdrawn after a document is uploaded, yet before a supersede is required, systems must either:

- Proceed with the supersede despite the current consent setting, or
- Remove the older document